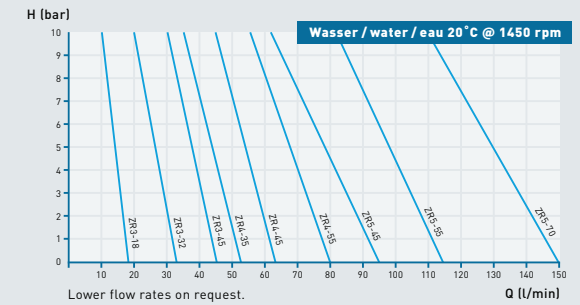
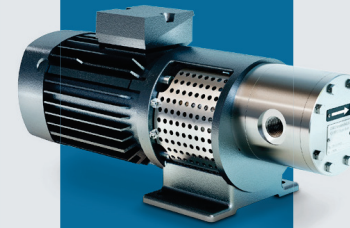
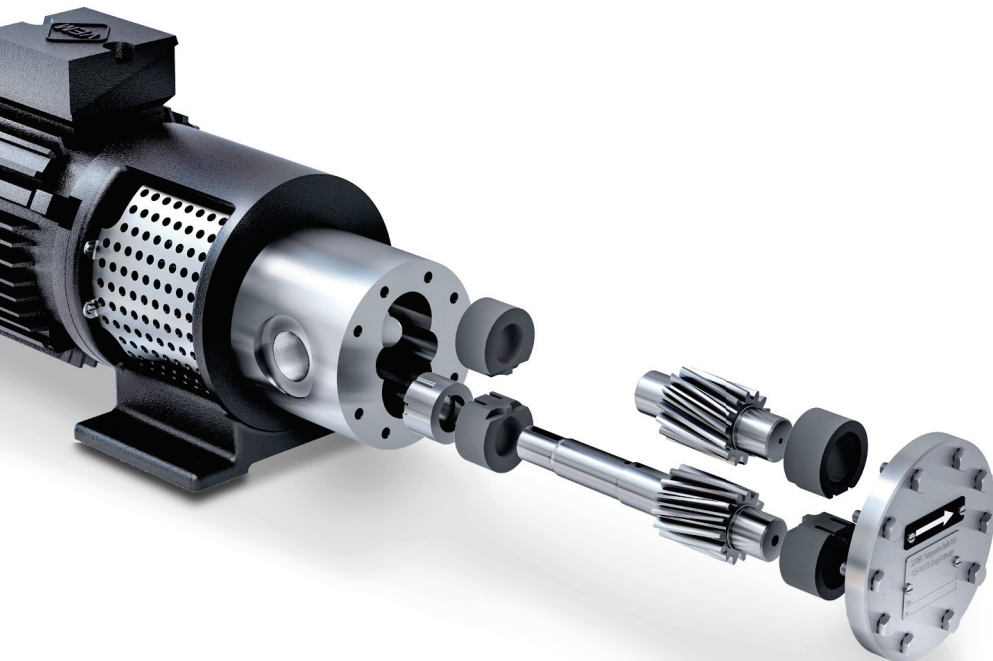


Gear pump ZR

This pump type is the robust all-rounder for a broad range of industrial applications. It is suitable for pumping thin-bodied to viscous media (max. 3000 mPas).

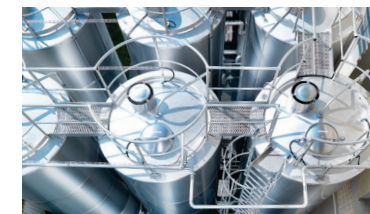


Features

- sturdy design comprising high-quality chromium-nickel-molybdenum stainless steel 1.4435
- helical-gears for quiet operation
- normal-priming gear pump
- pumping free of pulsation
- versatile ranges of application
- good adjustability with frequency converter due to the steep, linear pump characteristic curve
- option for various mechanical seal systems
- with proven chain coupling

Optional forms

- **ATEX** for zones 1, 2, 21 and 22
- **magnetic coupling** hermetically sealed version ZRP3 for crystallising, toxic, flammable and environmentally hazardous liquids
- **mobile** with sturdy trolley and accessories to customer requirements



Diverse applications in tank filling and spraying of liquids via nozzles.

 **Foodstuffs**

 **Fodder**

 **Chemicals / industry**

Flow rate Q	max. 9 m ³ /h
Delivery head H	max. 100 m
Temperature range	minus 30°C to 200°C
Viscosity	max. 3000 mPas
Nominal pressure	up to PN16