

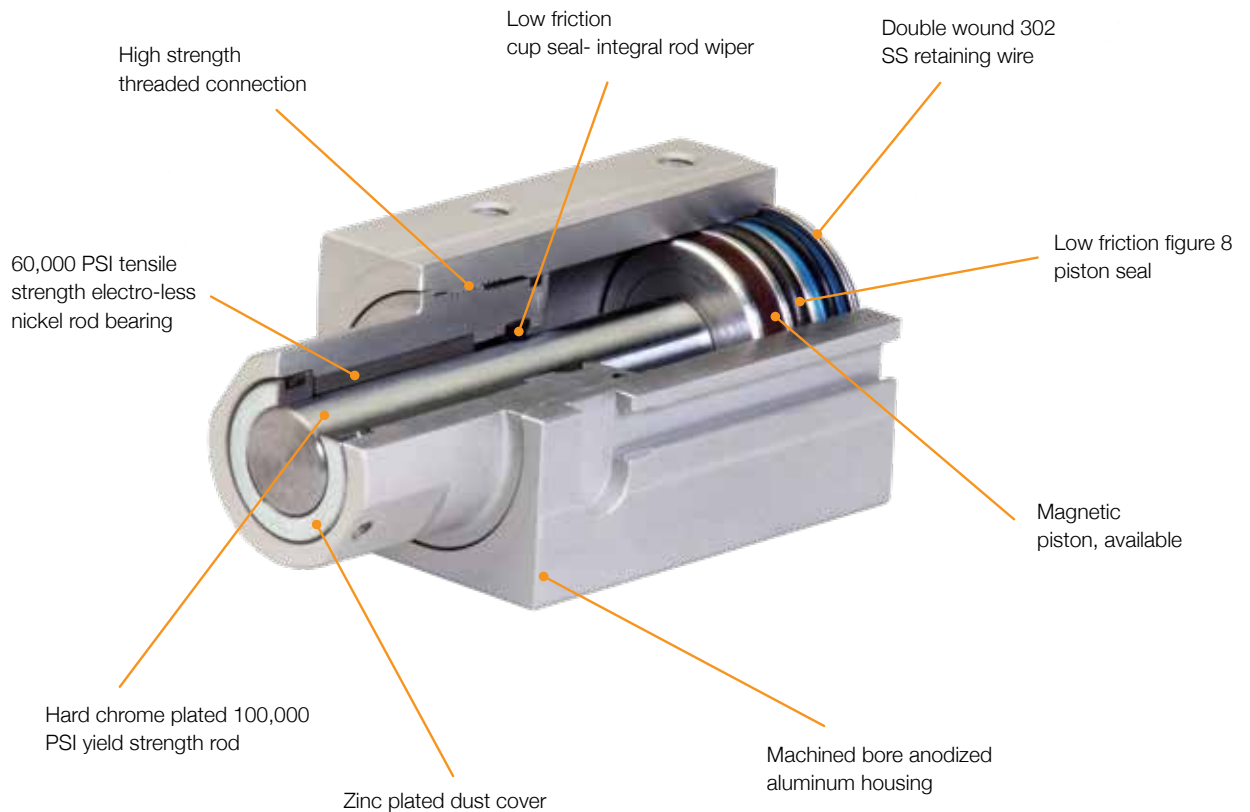
TABLE OF CONTENTS

SC SERIES Stopper Cylinders



109	Features	118	32mm	Bore
110	How to Order	121	40mm	Bore
111	Engineering Data	124	50mm	Bore
112	20mm	127	Rod End Styles	
115	25mm	128	Flange Mount	

SC SERIES STOPPER CYLINDERS



Common Features

Nason's SC series stopper cylinders were designed for today's demanding conveyor systems. With more power in a smaller package, the SC series stopper cylinder is offered in seven different mounting styles with three different rod end configurations to fit into almost any design situation.

Compact Size

Nason's SC series cylinders were designed with today's conveyor systems in mind. Five bore sizes with a variety of strokes and rod end options ensure a perfect fit for each application. Nason is able to fit a larger bore size into the same package as comparable competitive products.

Rugged Construction

The SC series incorporates 60,000 PSI tensile strength bearings with an oversized 100,000 PSI yield strength rod for maximum stopping power.

Versatile Design

The SC series stopper cylinders are metric in design (bore & rod size). They are offered in inch or metric mounting and porting. Five different threaded mounting options and two different flange mounting options ensure an exact fit into today's tight space requirements. Due to their 100% machined design they are easily customized by Nason.

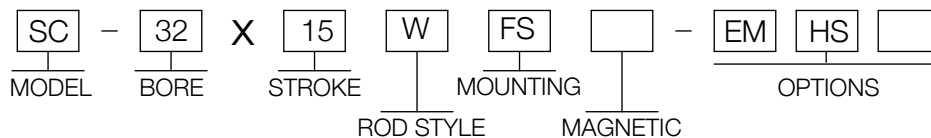
Rebuildable

All SC series cylinders are field rebuildable.

How to Order

Example:

Part Number: SC-32X15WFS-EMHS



MODEL
SC - Stopper Cylinder

BORE
20 - 20mm (.79")
25 - 25mm (.98")
32 - 32mm (1.26")
40 - 40mm (1.58")
50 - 50mm (1.97")

STROKE	
20mm Bore	10 - 10mm Stroke
	15 - 15mm Stroke
25mm Bore	10 - 10mm Stroke
	15 - 15mm Stroke
	20 - 20mm Stroke
32mm Bore	10 - 10mm Stroke
	15 - 15mm Stroke
	20 - 20mm Stroke
40mm Bore	20 - 20mm Stroke
	25 - 25mm Stroke
	30 - 30mm Stroke
50mm Bore	20 - 20mm Stroke
	25 - 25mm Stroke
	30 - 30mm Stroke

ROD STYLE
BLANK (No Code) - Round Rod
F - Flat Rod
W - Flat Rod with Roller

MOUNTING
MF - Threads on Front Face (Rod End)
MR - Threads on Rear Face (Opposite Rod)
MB - Threads on Both Faces
MT - Drilled Through and Counterbored for Bolt Clearance
MS - Threads on Side of Cylinder Body
FR - Flange on Rear Face (Opposite Rod)
FS - Flange on Side of Cylinder Body

MAGNETIC
BLANK (No Code) - Standard "NO MAGNET" Piston
M - Magnetic Piston and Sensor Mounting

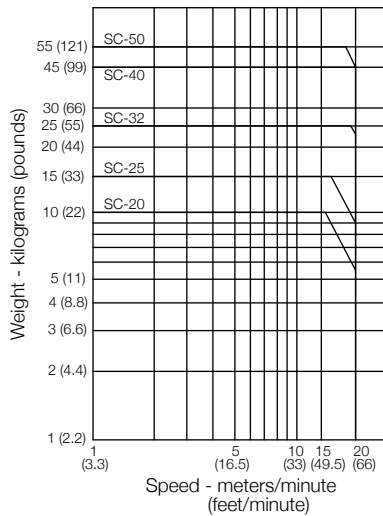
OPTIONS
EM - Inch Threads (Mounting and Ports)
HS - High Temperature Seals -10°C to 150°C (0°F to 302°F)
UR - Urethane Shock Pad Rear (Opposite Rod)

Operating Media: Air (Clean, Dry or Lubricated)
 Maximum Operating Pressure: 17 Bar (250 PSI)
 Operating Temperature: -10°C to 95°C (0°F to 200°F)
 Packing: Buna N
 Lubrication: PTFE impregnated grease
 Stroke Tolerance: +1,0mm/-0mm (+0.04"/-0")

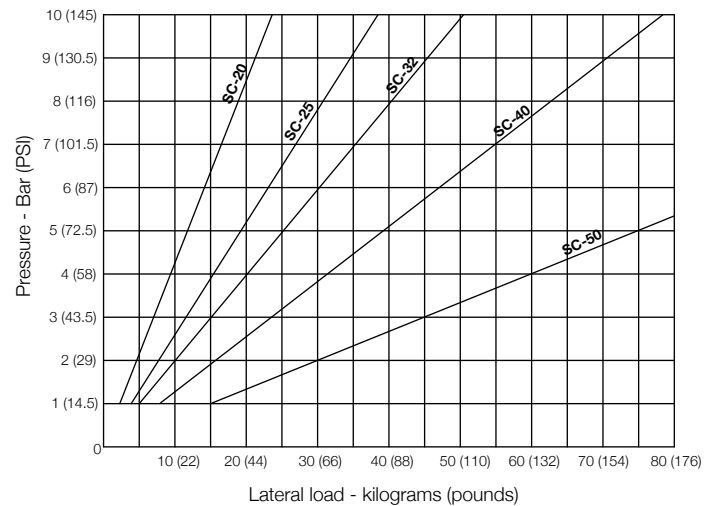
Unit Weights kg (lbs)

BORE	STROKE				
	10	15	20	25	30
20	0.15 (.34)	0.16 (.36)	—	—	—
25	0.21 (.47)	0.23 (.50)	0.24 (.53)	—	—
32	0.43 (.94)	0.45 (1.0)	0.48 (1.06)	—	—
40	—	—	0.74 (1.67)	0.79 (1.75)	0.83 (1.83)
50	—	—	1.10 (2.43)	1.15 (2.53)	1.19 (2.63)

Operating Ranges



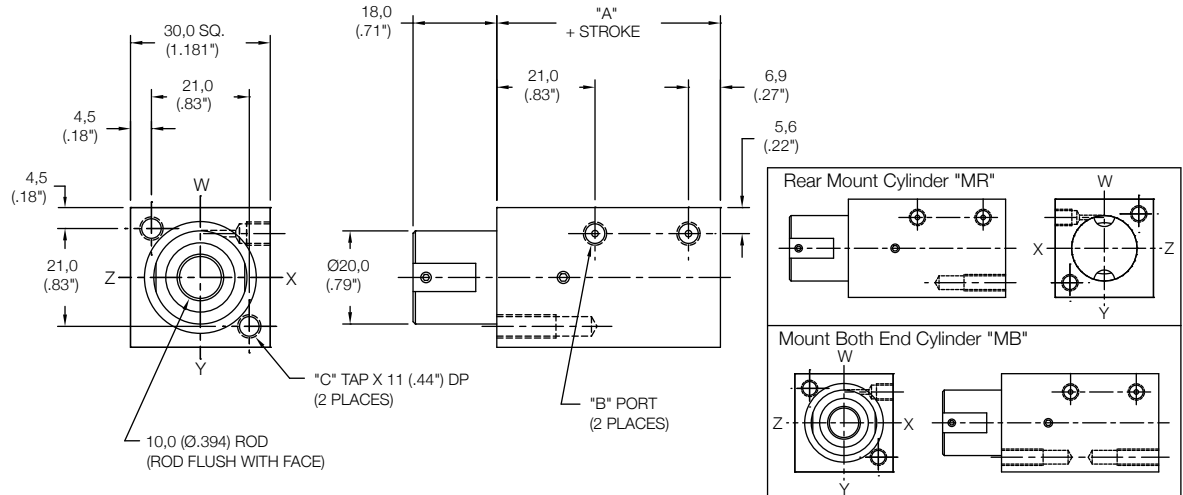
Minimum Operating Pressure for Load



Non Magnetic Front Mount Cylinder "MF"

MODEL	STANDARD STROKES	"A"	PISTON AREA
SC	10mm	38,0 (1.50")	PUSH 3,14 cm ² (0.48 in ²)
	15mm		PULL 2,32 cm ² (0.36 in ²)

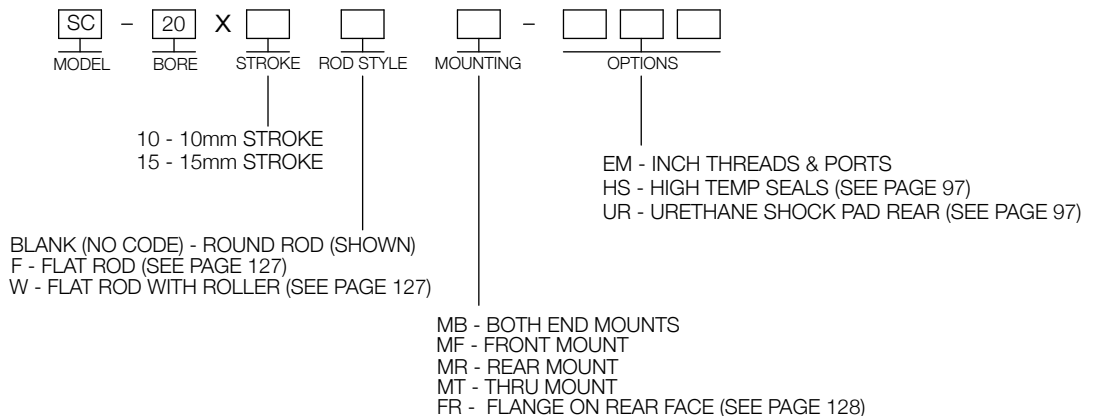
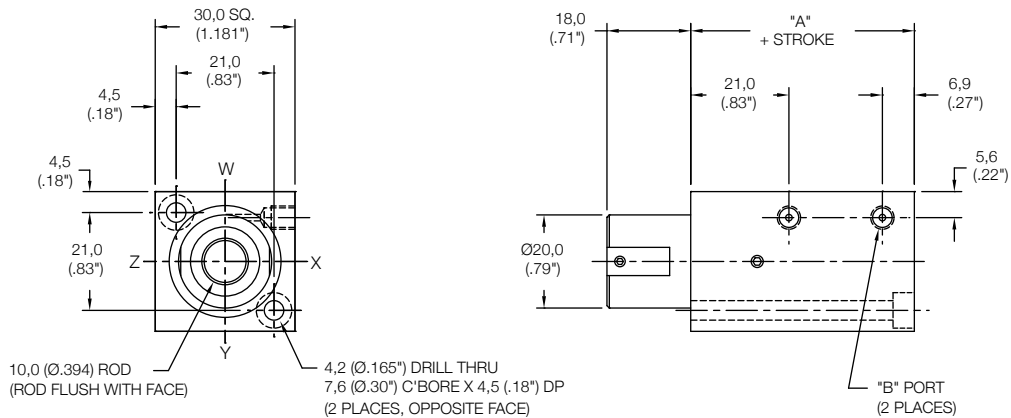
	Standard Threads	"EM" Option
"B"	M5X0,8	#10-32
"C"	M5X0,8	#10-32



Non Magnetic Thru Mount Cylinder "MT"

MODEL	STANDARD STROKES	"A"	PISTON AREA
SC	10mm	38,0 (1.50")	PUSH 3,14 cm ² (0.48 in ²)
	15mm		PULL 2,32 cm ² (0.36 in ²)

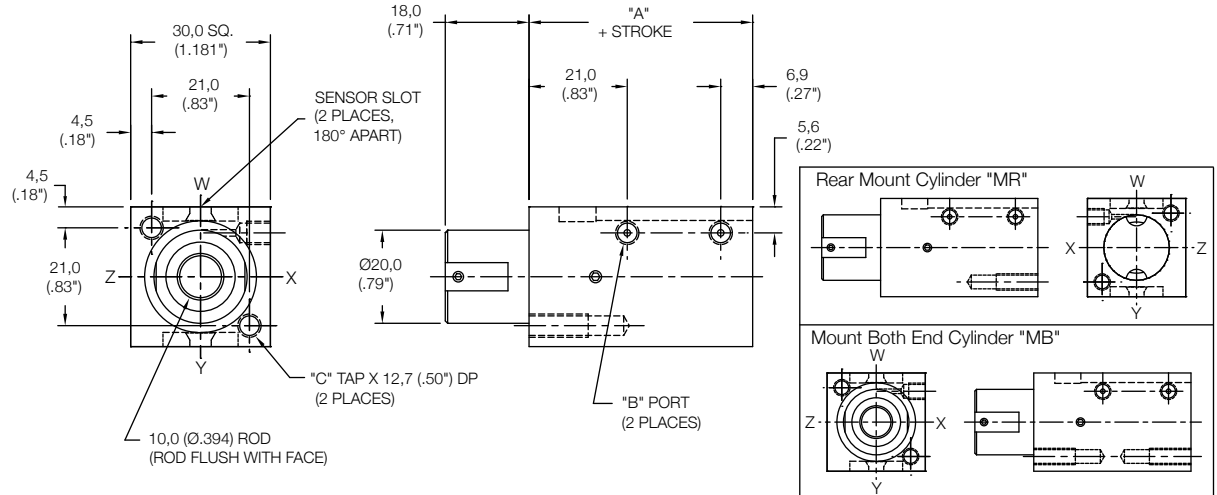
	Standard Threads	"EM" Option
"B"	M5X0,8	#10-32



Magnetic Front Mount Cylinder "MF"

MODEL	STANDARD STROKES	"A"	PISTON AREA
SC	10mm	38,0 (1.50")	PUSH 3,14 cm ² (0.48 in ²)
	15mm		PULL 2,32 cm ² (0.36 in ²)

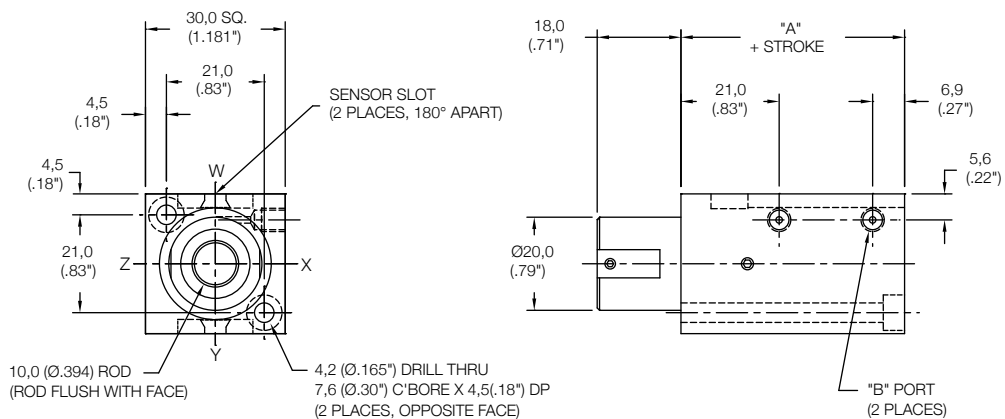
	Standard Threads	"EM" Option
"B"	M5X0,8	#10-32
"C"	M5X0,8	#10-32



Magnetic Thru Mount Cylinder "MT"

MODEL	STANDARD STROKES	"A"	PISTON AREA
SC	10mm	38,0 (1.50")	PUSH 3,14 cm ² (0.48 in ²)
	15mm		PULL 2,32 cm ² (0.36 in ²)

	Standard Threads	"EM" Option
"B"	M5X0,8	#10-32



10 - 10mm STROKE
15 - 15mm STROKE

BLANK (NO CODE) - ROUND ROD (SHOWN)
F - FLAT ROD (SEE PAGE 127)
W - FLAT ROD WITH ROLLER (SEE PAGE 127)

EM - INCH THREADS & PORTS
HS - HIGH TEMP SEALS (SEE PAGE 97)
UR - URETHANE SHOCK PAD REAR (SEE PAGE 97)

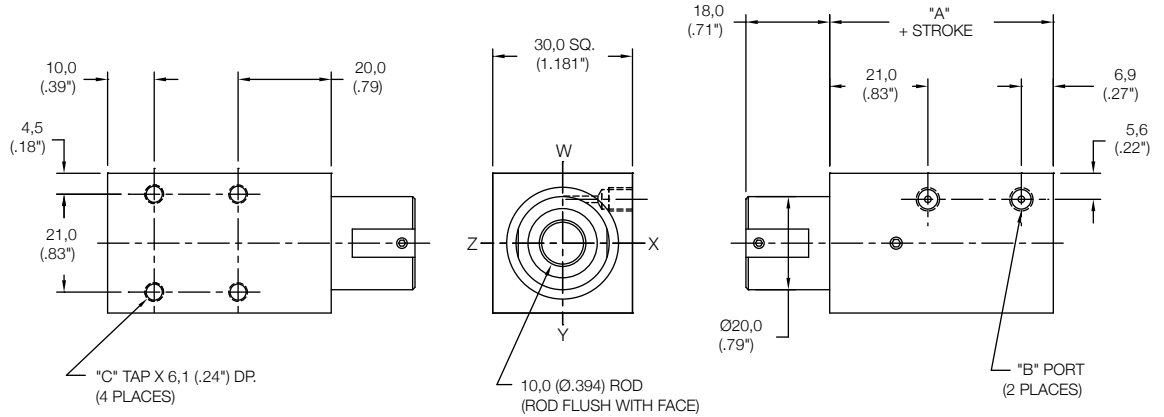
SENSORS SOLD SEPARATELY
SKS, SKP, SCS, SCP - SOLID STATE
LIMIT SENSORS
(SEE PAGE 88 FOR DETAILS)

MB - BOTH END MOUNTS
MF - FRONT MOUNT
MR - REAR MOUNT
MT - THRU MOUNT
FR - FLANGE ON REAR FACE (SEE PAGE 128)

**Non Magnetic
Side Mount Cylinder "MS"**

MODEL	STANDARD STROKES	"A"	PISTON AREA
SC	10mm	38,0 (1.50")	PUSH 3,14 cm ² (0.48 in ²)
	15mm		PULL 2,32 cm ² (0.36 in ²)

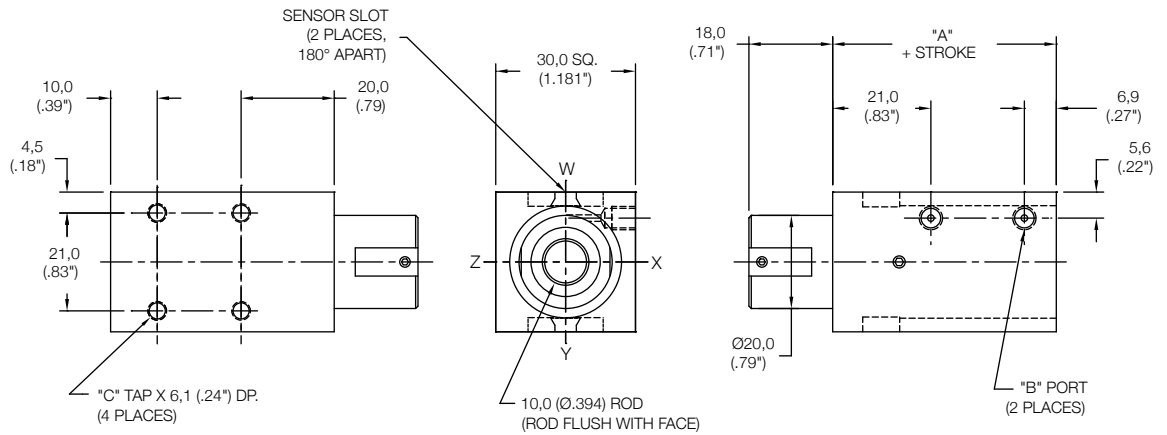
	Standard Threads	"EM" Option
"B"	M5X0,8	#10-32
"C"	M4X0,7	#8-32



**Magnetic
Side Mount Cylinder "MS"**

MODEL	STANDARD STROKES	"A"	PISTON AREA
SC	10mm	38,0 (1.50")	PUSH 3,14 cm ² (0.48 in ²)
	15mm		PULL 2,32 cm ² (0.36 in ²)

	Standard Threads	"EM" Option
"B"	M5X0,8	#10-32
"C"	M4X0,7	#8-32



10 - 10mm STROKE
15 - 15mm STROKE

MS - SIDE THREADS
FS - SIDE FLANGES
(SEE PAGE 128)

EM - INCH THREADS & PORTS
HS - HIGH TEMP SEALS (SEE PAGE 97)
UR - URETHANE SHOCK PAD REAR
(SEE PAGE 97)

BLANK (NO CODE) - ROUND ROD (SHOWN)
F - FLAT ROD (SEE PAGE 127)
W - FLAT ROD WITH ROLLER (SEE PAGE 127)

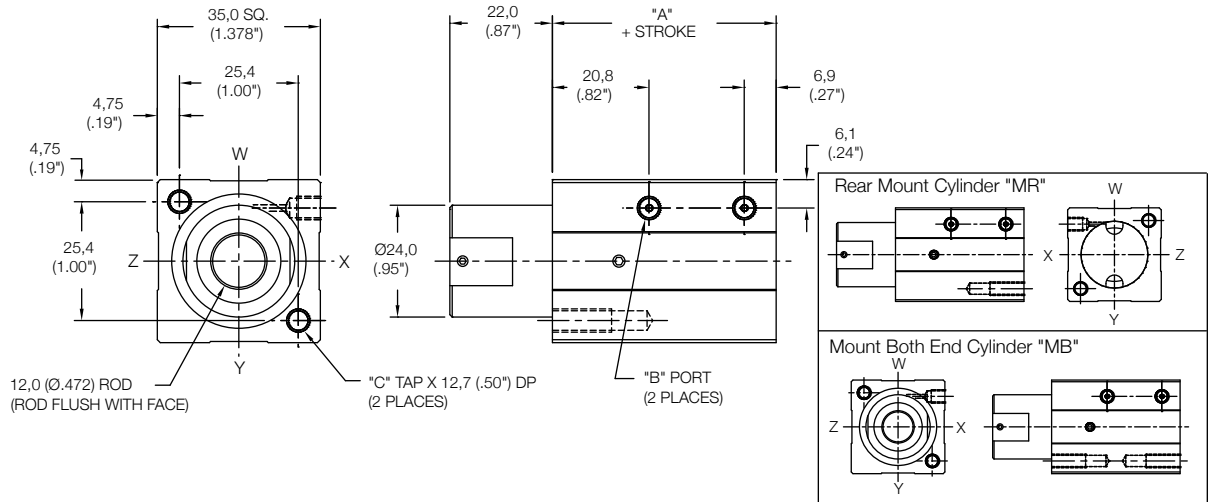
BLANK (NO CODE) - STANDARD "NO MAGNET" PISTON
M - MAGNETIC PISTON AND SENSOR MOUNTING SLOTS

SENSORS SOLD SEPARATELY
SKS, SKP, SCS, SCP - SOLID STATE
LIMIT SENSORS
(SEE PAGE 88 FOR DETAILS)

Non Magnetic Front Mount Cylinder "MF"

MODEL	STANDARD STROKES	"A"	PISTON AREA
SC	10mm	38,0 (1.50")	PUSH 4,91 cm ² (0.76 in ²) PULL 3,81 cm ² (0.59 in ²)
	15mm		
	20mm		

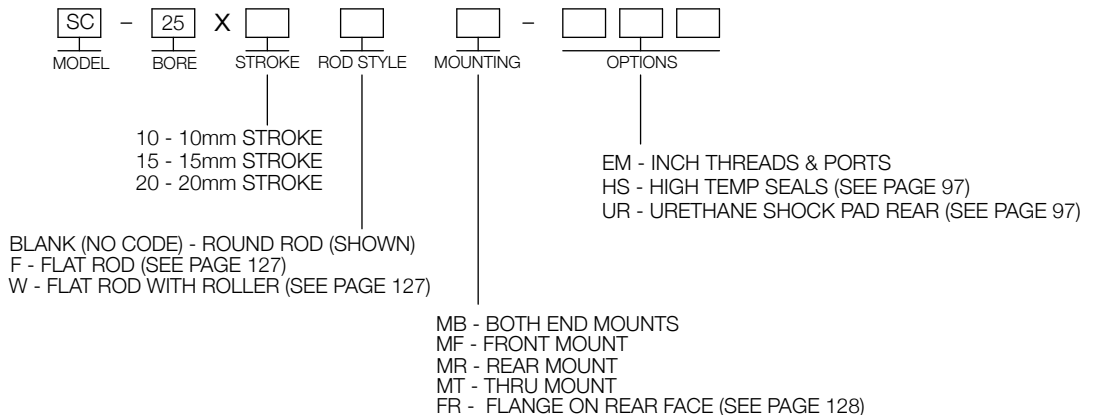
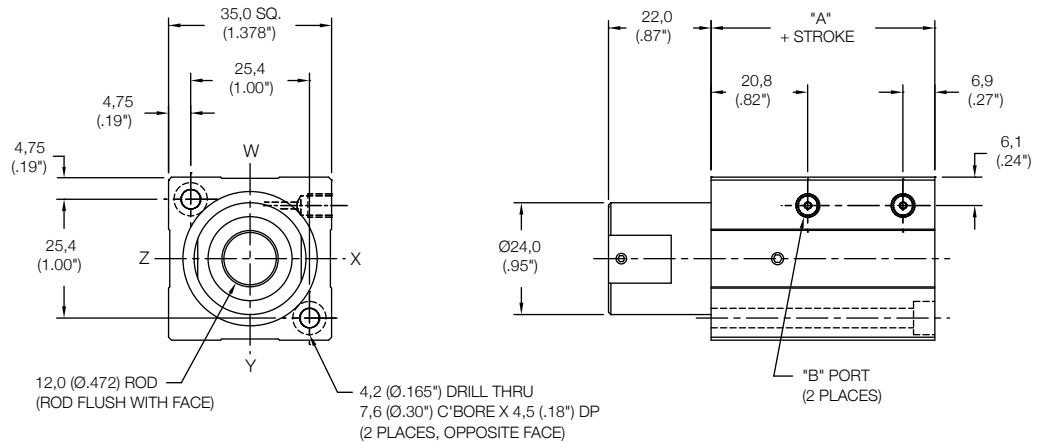
	Standard Threads	"EM" Option
"B"	M5X0,8	#10-32
"C"	M5X0,8	#10-32



Non Magnetic Thru Mount Cylinder "MT"

MODEL	STANDARD STROKES	"A"	PISTON AREA
SC	10mm	38,0 (1.50")	PUSH 4,91 cm ² (.76 in ²) PULL 3,81 cm ² (.59 in ²)
	15mm		
	20mm		

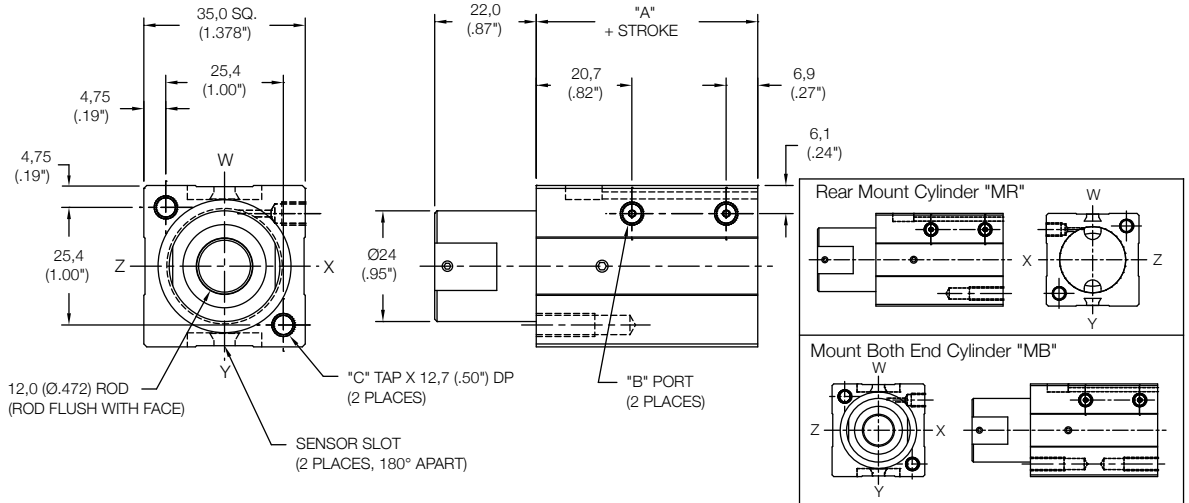
	Standard Threads	"EM" Option
"B"	M5X0,8	#10-32



Magnetic Front Mount Cylinder "MF"

MODEL	STANDARD STROKES	"A"	PISTON AREA
SC	10mm	38,0 (1.50")	PUSH 4,91 cm ² (0.76 in ²) PULL 3,81 cm ² (0.59 in ²)
	15mm		
	20mm		

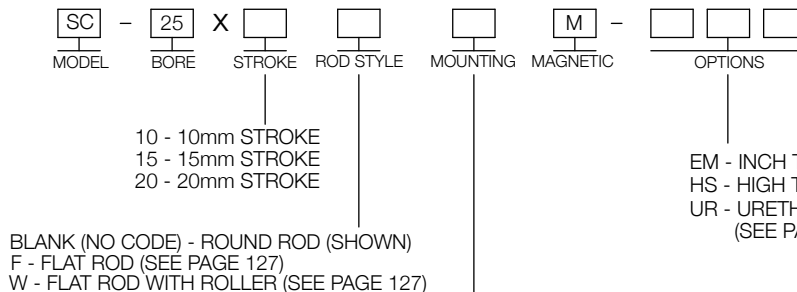
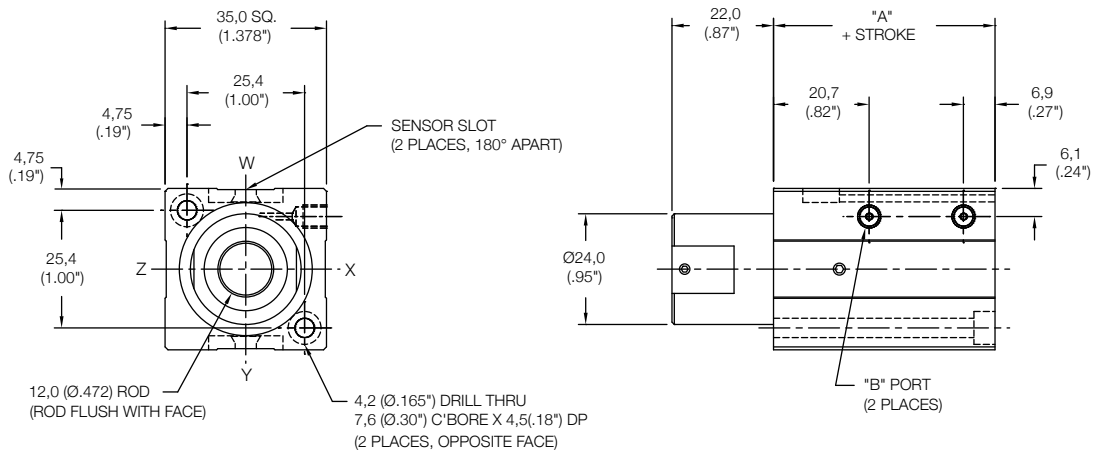
	Standard Threads	"EM" Option
"B"	M5X0,8	#10-32
"C"	M5X0,8	#10-32



Magnetic Thru Mount Cylinder "MT"

MODEL	STANDARD STROKES	"A"	PISTON AREA
SC	10mm	38,0 (1.50")	PUSH 4,91 cm ² (.76 in ²) PULL 3,81 cm ² (.59 in ²)
	15mm		
	20mm		

	Standard Threads	"EM" Option
"B"	M5X0,8	#10-32



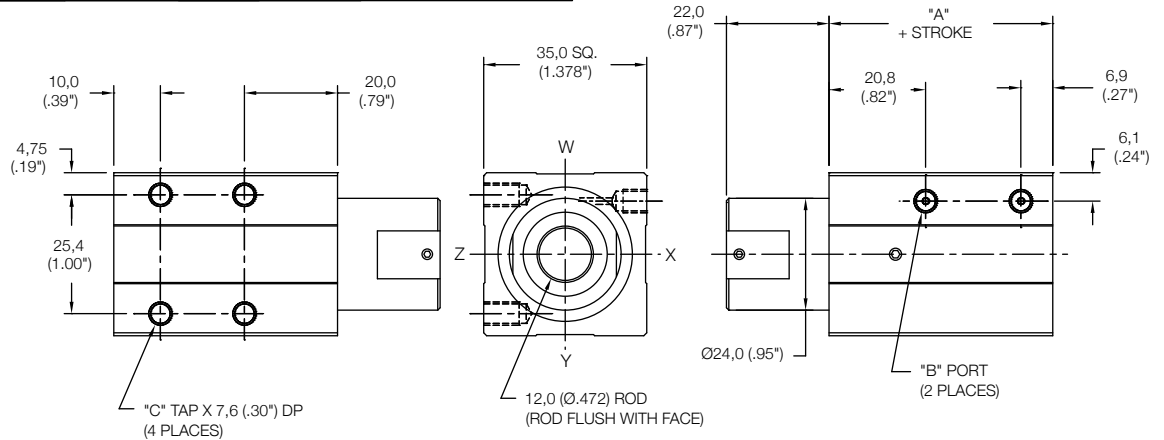
SENSORS SOLD SEPARATELY
SKS, SKP, SCS, SCP - SOLID STATE
LIMIT SENSORS
(SEE PAGE 88 FOR DETAILS)

MB - BOTH END MOUNTS
MF - FRONT MOUNT
MR - REAR MOUNT
MT - THRU MOUNT
FR - FLANGE ON REAR FACE (SEE PAGE 128)

Non Magnetic Side Mount Cylinder "MS"

MODEL	STANDARD STROKES	"A"	PISTON AREA
SC	10mm	38,0 (1.50")	PUSH 4,91 cm ² (0.76 in ²) PULL 3,81 cm ² (0.59 in ²)
	15mm		
	20mm		

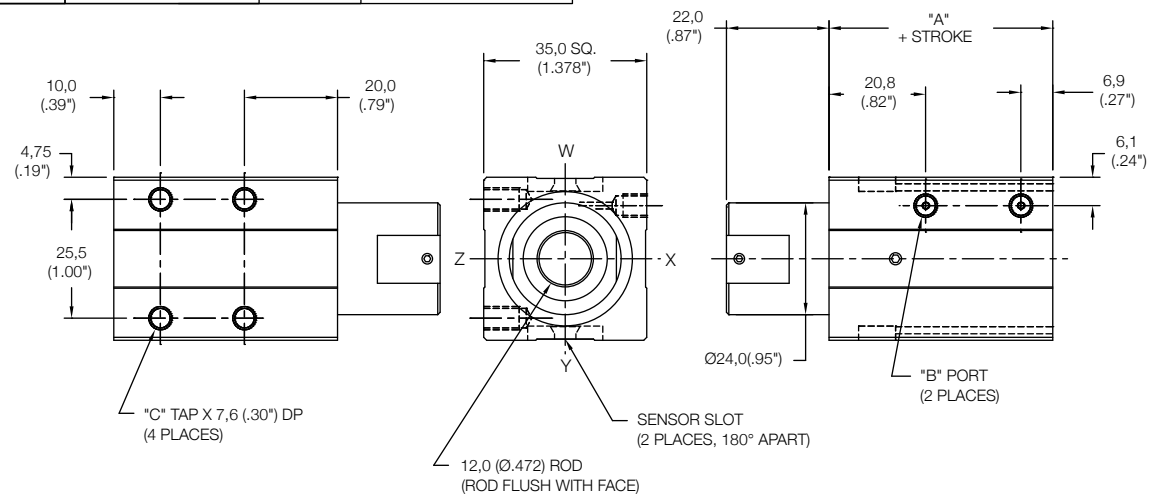
	Standard Threads	"EM" Option
"B"	M5X0,8	#10-32
"C"	M5X0,8	#10-32



Magnetic Side Mount Cylinder "MS"

MODEL	STANDARD STROKES	"A"	PISTON AREA
SC	10mm	38,0 (1.50")	PUSH 4,91 cm ² (0.76 in ²) PULL 3,81 cm ² (0.59 in ²)
	15mm		
	20mm		

	Standard Threads	"EM" Option
"B"	M5X0,8	#10-32
"C"	M5X0,8	#10-32



10 - 10mm STROKE
15 - 15mm STROKE
20 - 20mm STROKE

MS - SIDE THREADS
FS - SIDE FLANGES
(SEE PAGE 128)

EM - INCH THREADS & PORTS
HS - HIGH TEMP SEALS (SEE PAGE 97)
UR - URETHANE SHOCK PAD REAR
(SEE PAGE 97)

BLANK (NO CODE) - ROUND ROD (SHOWN)
F - FLAT ROD (SEE PAGE 127)
W - FLAT ROD WITH ROLLER (SEE PAGE 127)

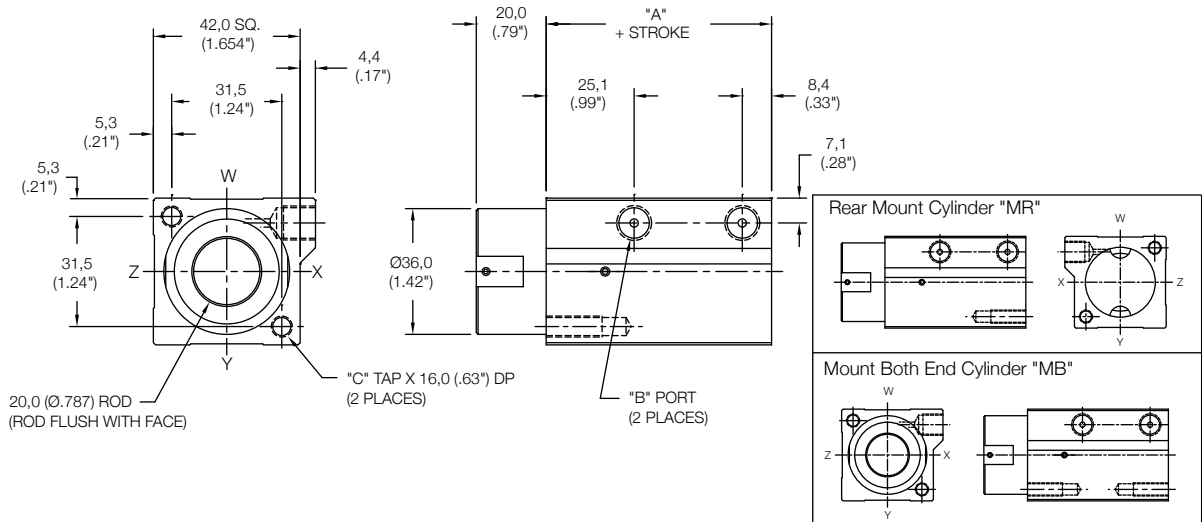
BLANK (NO CODE) - STANDARD "NO MAGNET" PISTON
M - MAGNETIC PISTON AND SENSOR MOUNTING SLOTS

SENSORS SOLD SEPARATELY
SKS, SKP, SCS, SCP - SOLID STATE
LIMIT SENSORS
(SEE PAGE 88 FOR DETAILS)

Non Magnetic Front Mount Cylinder "MF"

MODEL	STANDARD STROKES	"A"	PISTON AREA
SC	10mm	44,0 (1.73")	PUSH 8,04 cm ² (1.25 in ²) PULL 4,91 cm ² (0.76 in ²)
	15mm		
	20mm		

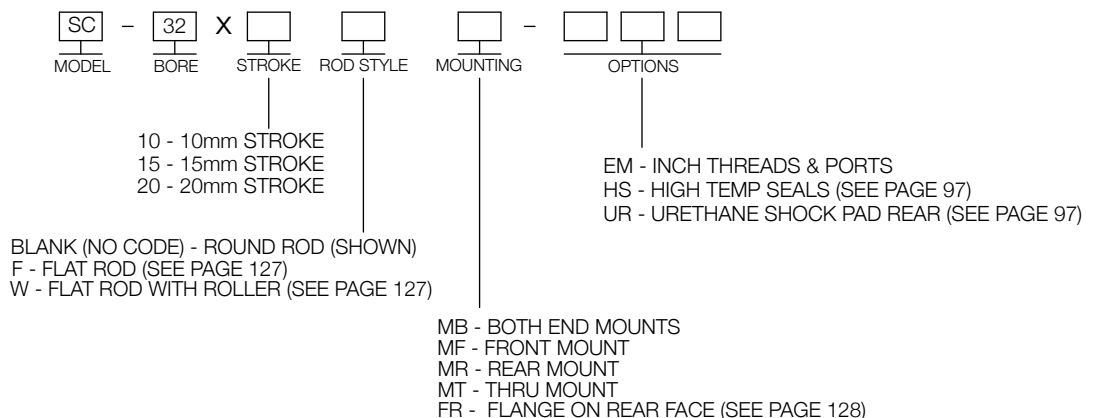
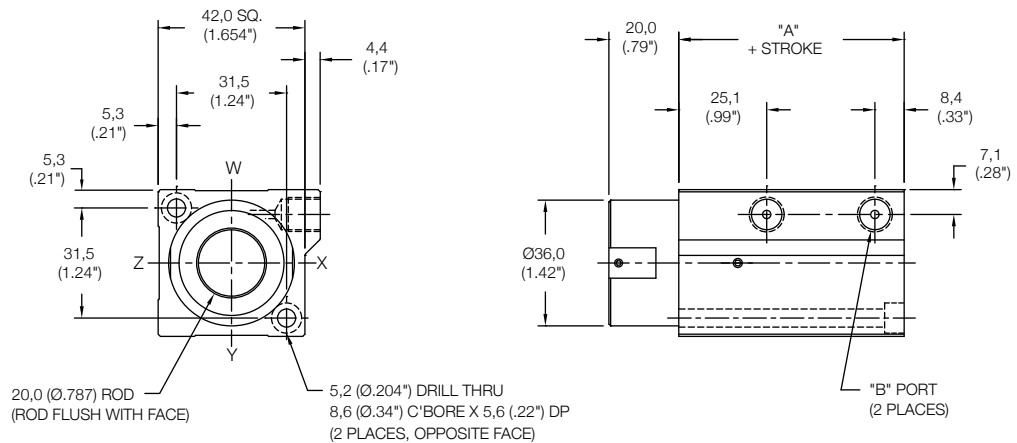
	Standard Threads	"EM" Option
"B"	G 1/8 PORT	1/8-27
"C"	M6X1,0	1/4-20



Non Magnetic Thru Mount Cylinder "MT"

MODEL	STANDARD STROKES	"A"	PISTON AREA
SC	10mm	44,0 (1.73")	PUSH 8,04 cm ² (1.25 in ²) PULL 4,91 cm ² (0.76 in ²)
	15mm		
	20mm		

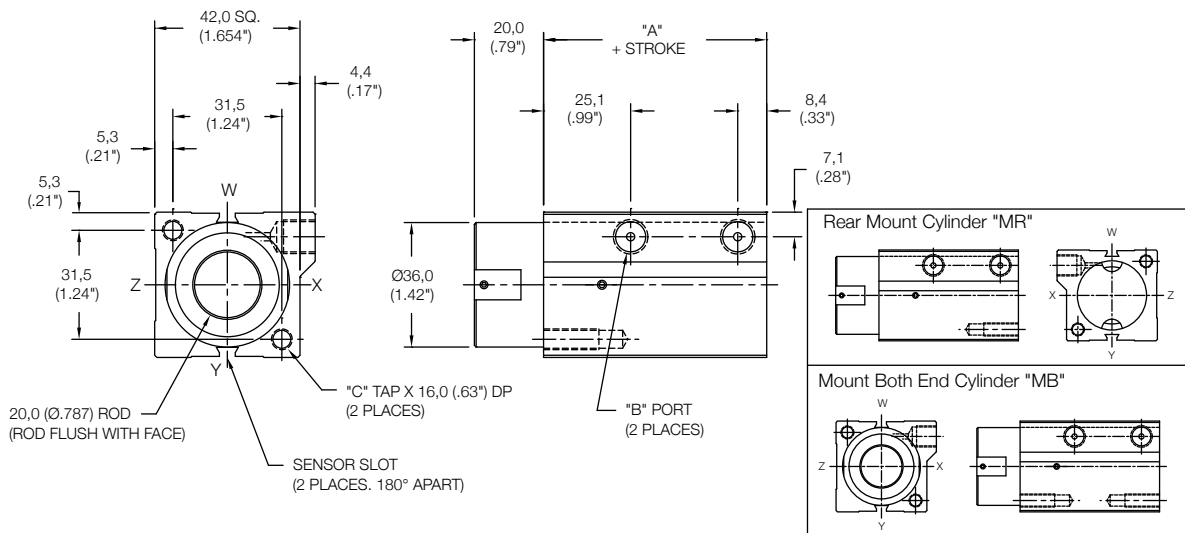
	Standard Threads	"EM" Option
"B"	G 1/8 PORT	1/8-27



Magnetic Front Mount Cylinder "MF"

MODEL	STANDARD STROKES	"A"	PISTON AREA
SC	10mm	44,0 (1.73")	PUSH 8,04 cm ² (1.25 in ²) PULL 4,91 cm ² (0.76 in ²)
	15mm		
	20mm		

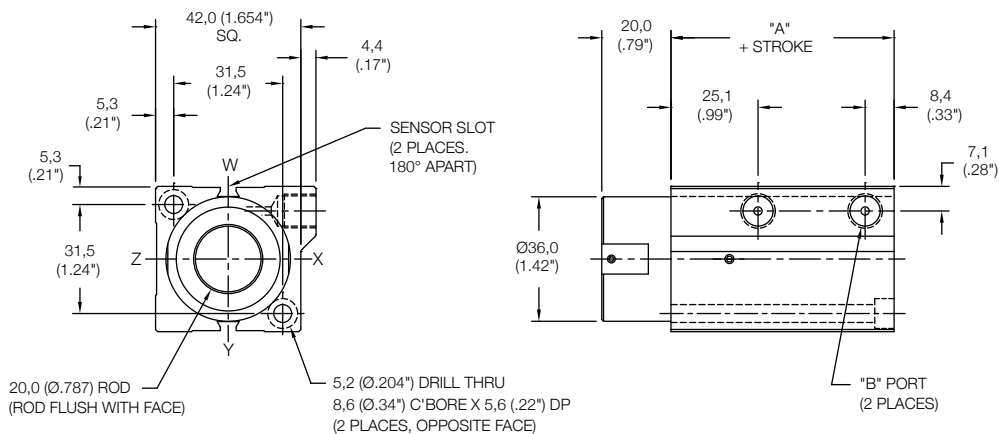
	Standard Threads	"EM" Option
"B"	G 1/8 PORT	1/8-27
"C"	M6X1,0	1/4-20



Magnetic Thru Mount Cylinder "MT"

MODEL	STANDARD STROKES	"A"	PISTON AREA
SC	10mm	44,0 (1.73")	PUSH 8,04 cm ² (1.25 in ²) PULL 4,91 cm ² (0.76 in ²)
	15mm		
	20mm		

	Standard Threads	"EM" Option
"B"	G 1/8 PORT	1/8-27



10 - 10mm STROKE
15 - 15mm STROKE
20 - 20mm STROKE

BLANK (NO CODE) - ROUND ROD (SHOWN)
F - FLAT ROD (SEE PAGE 127)
W - FLAT ROD WITH ROLLER (SEE PAGE 127)

EM - INCH THREADS & PORTS
HS - HIGH TEMP SEALS (SEE PAGE 97)
UR - URETHANE SHOCK PAD REAR (SEE PAGE 97)

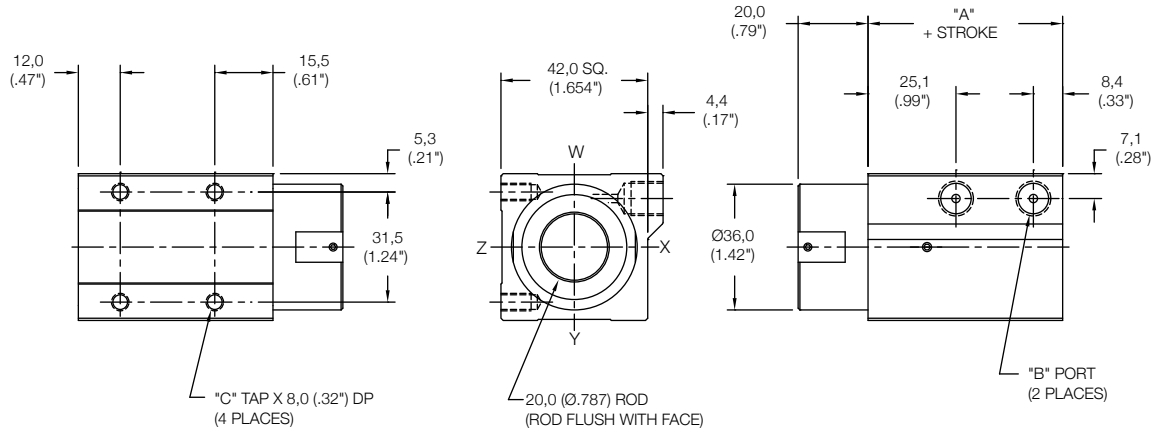
SENSORS SOLD SEPARATELY
SKS, SKP, SCS, SCP - SOLID STATE
LIMIT SENSORS
(SEE PAGE 88 FOR DETAILS)

MB - BOTH END MOUNTS
MF - FRONT MOUNT
MR - REAR MOUNT
MT - THRU MOUNT
FR - FLANGE ON REAR FACE (SEE PAGE 128)

**Non Magnetic
Side Mount Cylinder "MS"**

MODEL	STANDARD STROKES	"A"	PISTON AREA
SC	10mm	44,0 (1.73")	PUSH 8,04 cm ² (1.25 in ²) PULL 4,91 cm ² (0.76 in ²)
	15mm		
	20mm		

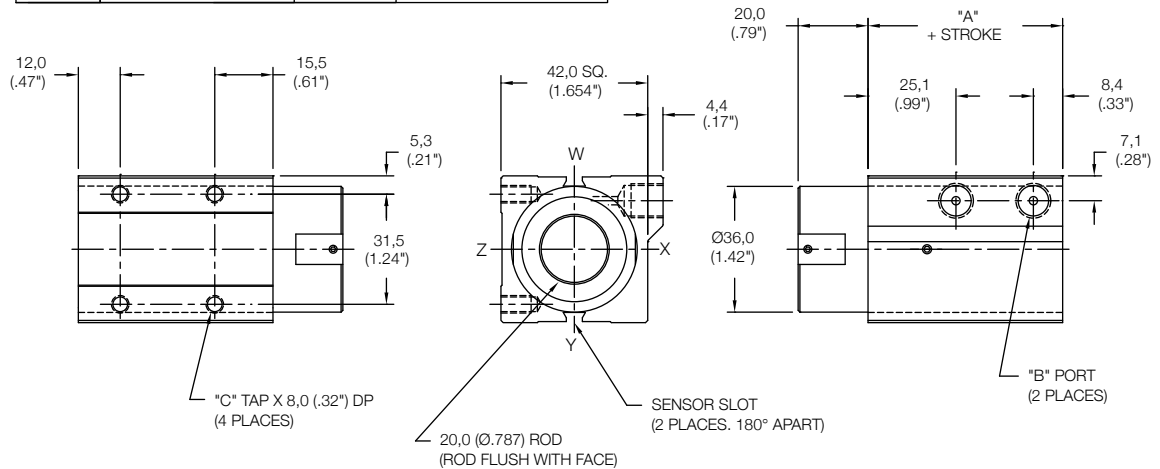
	Standard Threads	"EM" Option
"B"	G 1/8 PORT	1/8-27
"C"	M5X0,8	#10-32



**Magnetic
Side Mount Cylinder "MS"**

MODEL	STANDARD STROKES	"A"	PISTON AREA
SC	10mm	44,0 (1.73")	PUSH 8,04 cm ² (1.25 in ²) PULL 4,91 cm ² (0.76 in ²)
	15mm		
	20mm		

	Standard Threads	"EM" Option
"B"	G 1/8 PORT	1/8-27
"C"	M5X0,8	#10-32



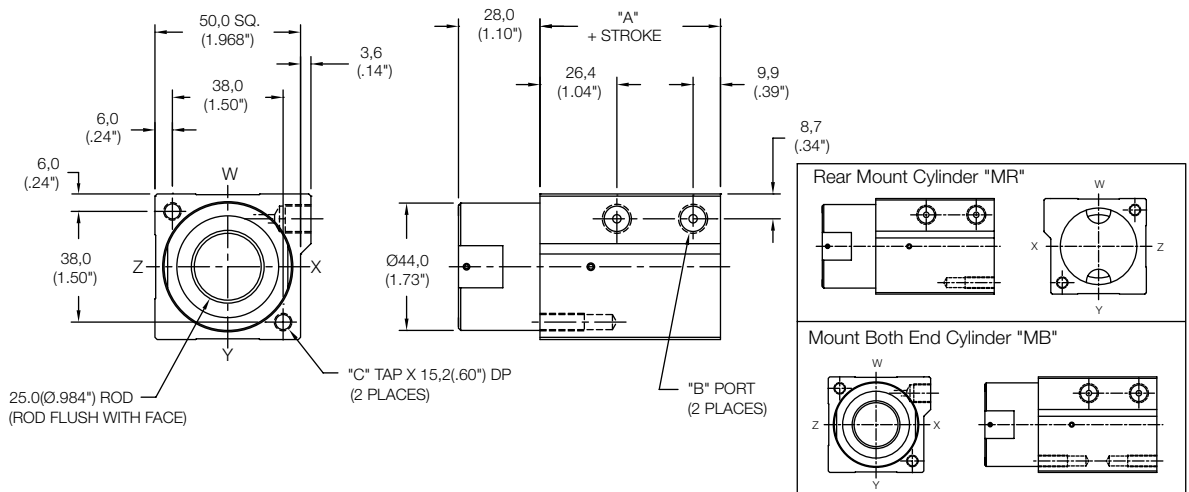
- MODEL: SC
 - BORE: 32
 - STROKE: 10 - 10mm STROKE, 15 - 15mm STROKE, 20 - 20mm STROKE
 - ROD STYLE: []
 - MOUNTING: MS - SIDE THREADS, FS - SIDE FLANGES (SEE PAGE 128)
 - MAGNETIC: []
 - OPTIONS: [] [] []
 - EM - INCH THREADS & PORTS
 - HS - HIGH TEMP SEALS (SEE PAGE 97)
 - UR - URETHANE SHOCK PAD REAR (SEE PAGE 97)
- BLANK (NO CODE) - ROUND ROD (SHOWN)
 F - FLAT ROD (SEE PAGE 127)
 W - FLAT ROD WITH ROLLER (SEE PAGE 127)
- BLANK (NO CODE) - STANDARD "NO MAGNET" PISTON
 M - MAGNETIC PISTON AND SENSOR MOUNTING SLOTS

SENSORS SOLD SEPARATELY
 SKS, SKP, SCS, SCP - SOLID STATE
 LIMIT SENSORS
 (SEE PAGE 88 FOR DETAILS)

Non Magnetic Front Mount Cylinder "MF"

MODEL	STANDARD STROKES	"A"	PISTON AREA
SC	20mm	47,0 (1.85")	PUSH 12,56 cm ² (1.95 in ²) PULL 9,42 cm ² (1.46 in ²)
	25mm		
	30mm		

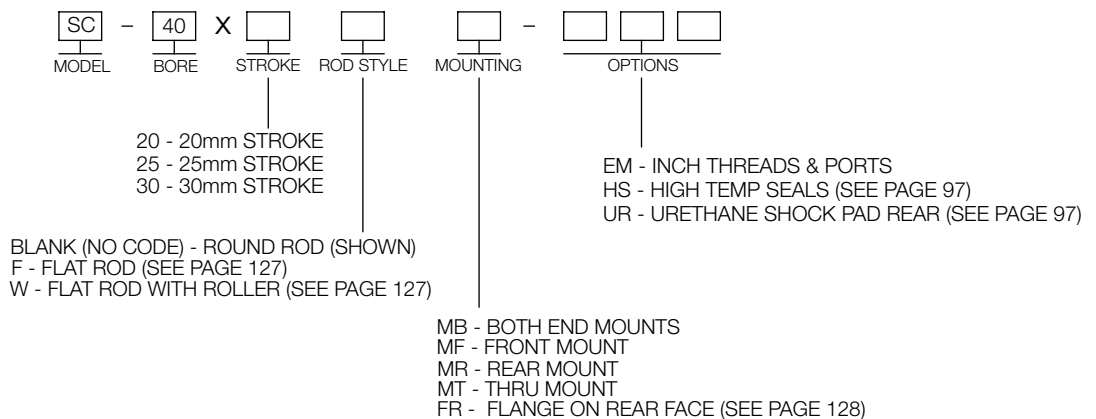
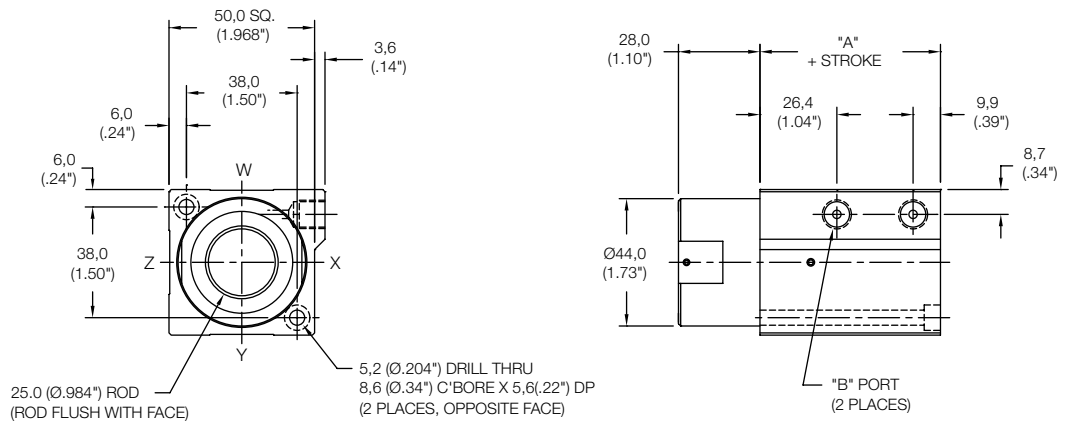
	Standard Threads	"EM" Option
"B"	G 1/8 PORT	1/8-27
"C"	M6X1,0	1/4-20



Non Magnetic Thru Mount Cylinder "MT"

MODEL	STANDARD STROKES	"A"	PISTON AREA
SC	20mm	47,0 (1.85")	PUSH 12,56 cm ² (1.95 in ²) PULL 9,42 cm ² (1.46 in ²)
	25mm		
	30mm		

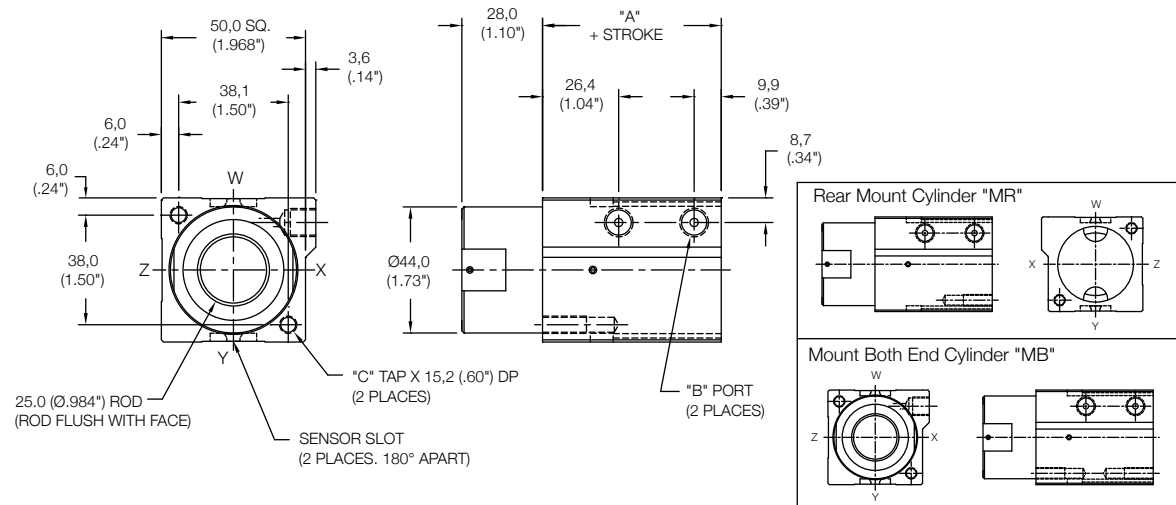
	Standard Threads	"EM" Option
"B"	G 1/8 PORT	1/8-27



Magnetic Front Mount Cylinder "MF"

MODEL	STANDARD STROKES	"A"	PISTON AREA
SC	20mm	47,0 (1.85")	PUSH 12,56 cm ² (1.95 in ²) PULL 9,42 cm ² (1.46 in ²)
	25mm		
	30mm		

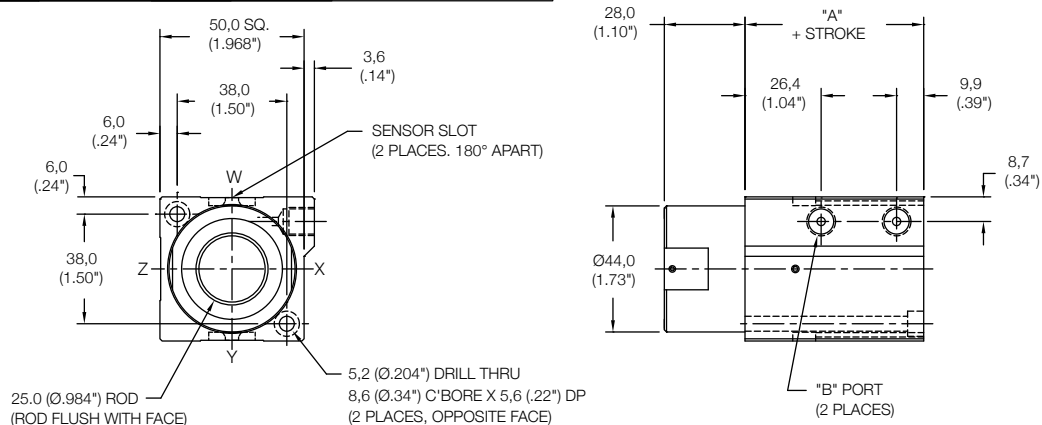
	Standard Threads	"EM" Option
"B"	G 1/8 PORT	1/8-27
"C"	M6X1,0	1/4-20



Magnetic Thru Mount Cylinder "MT"

MODEL	STANDARD STROKES	"A"	PISTON AREA
SC	20mm	47,0 (1.85")	PUSH 12,56 cm ² (1.95 in ²) PULL 9,42 cm ² (1.46 in ²)
	25mm		
	30mm		

	Standard Threads	"EM" Option
"B"	G 1/8 PORT	1/8-27



SC - 40 X M -

MODEL **BORE** **STROKE** **ROD STYLE** **MOUNTING** **MAGNETIC** **OPTIONS**

20 - 20mm STROKE
 25 - 25mm STROKE
 30 - 30mm STROKE

BLANK (NO CODE) - ROUND ROD (SHOWN)
 F - FLAT ROD (SEE PAGE 127)
 W - FLAT ROD WITH ROLLER (SEE PAGE 127)

EM - INCH THREADS & PORTS
 HS - HIGH TEMP SEALS (SEE PAGE 97)
 UR - URETHANE SHOCK PAD REAR (SEE PAGE 97)

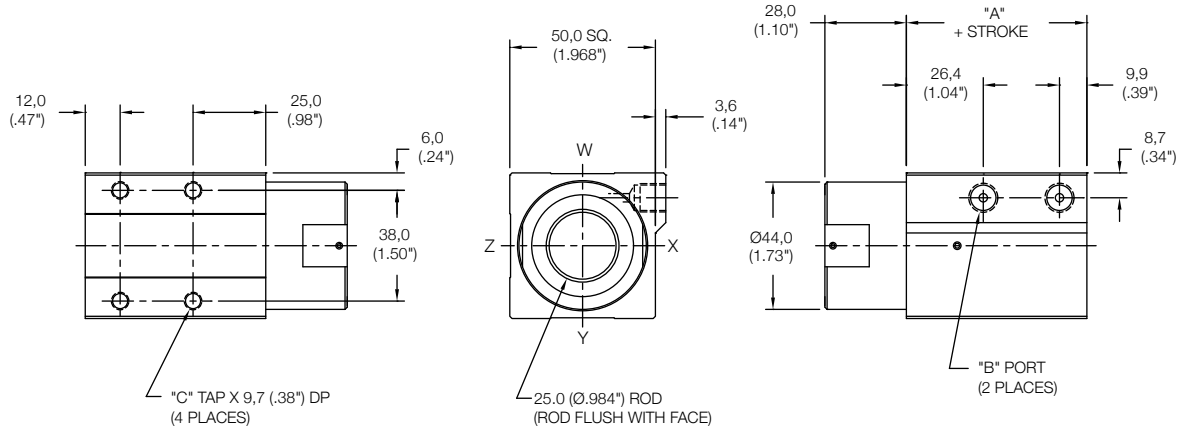
MB - BOTH END MOUNTS
 MF - FRONT MOUNT
 MR - REAR MOUNT
 MT - THRU MOUNT
 FR - FLANGE ON REAR FACE (SEE PAGE 128)

SENSORS SOLD SEPARATELY
 SKS, SKP, SCS, SCP - SOLID STATE
 LIMIT SENSORS
 (SEE PAGE 88 FOR DETAILS)

Non Magnetic Side Mount Cylinder "MS"

MODEL	STANDARD STROKES	"A"	PISTON AREA
SC	20mm	47,0 (1.85")	PUSH 12,56 cm ² (1.95 in ²) PULL 9,42 cm ² (1.46 in ²)
	25mm		
	30mm		

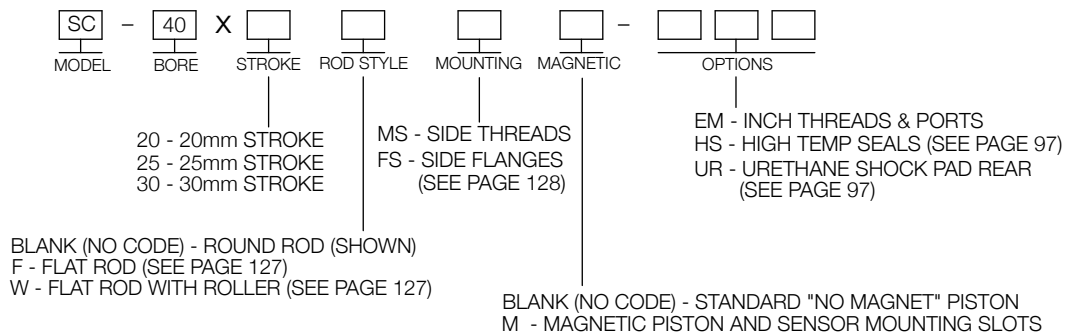
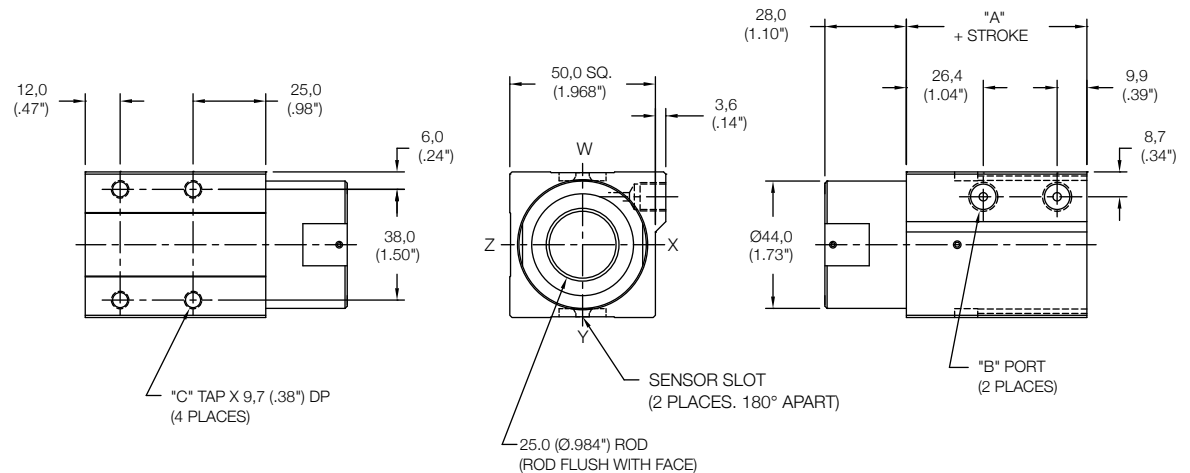
	Standard Threads	"EM" Option
"B"	G 1/8 PORT	1/8-27
"C"	M6X1,0	1/4-20



Magnetic Side Mount Cylinder "MS"

MODEL	STANDARD STROKES	"A"	PISTON AREA
SC	20mm	47,0 (1.85")	PUSH 12,56 cm ² (1.95 in ²) PULL 9,42 cm ² (1.46 in ²)
	25mm		
	30mm		

	Standard Threads	"EM" Option
"B"	G 1/8 PORT	1/8-27
"C"	M6X1,0	1/4-20

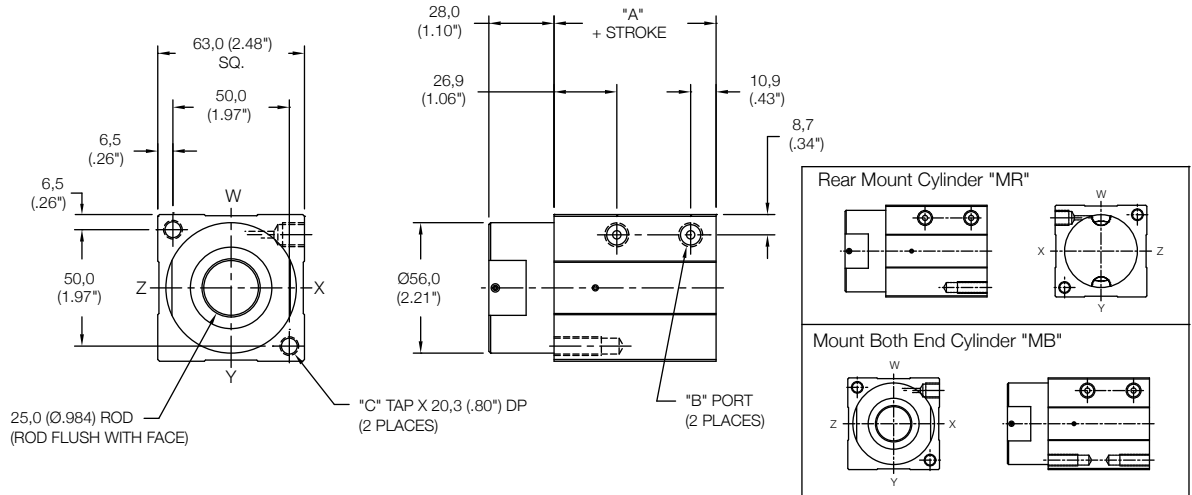


SENSORS SOLD SEPARATELY
SKS, SKP, SCS, SCP - SOLID STATE
LIMIT SENSORS
(SEE PAGE 88 FOR DETAILS)

Non Magnetic Front Mount Cylinder "MF"

MODEL	STANDARD STROKES	"A"	PISTON AREA
SC	20mm	49,5 (1.95")	PUSH 19,63 cm ² (3.04 in ²) PULL 14,72 cm ² (2.28 in ²)
	25mm		
	30mm		

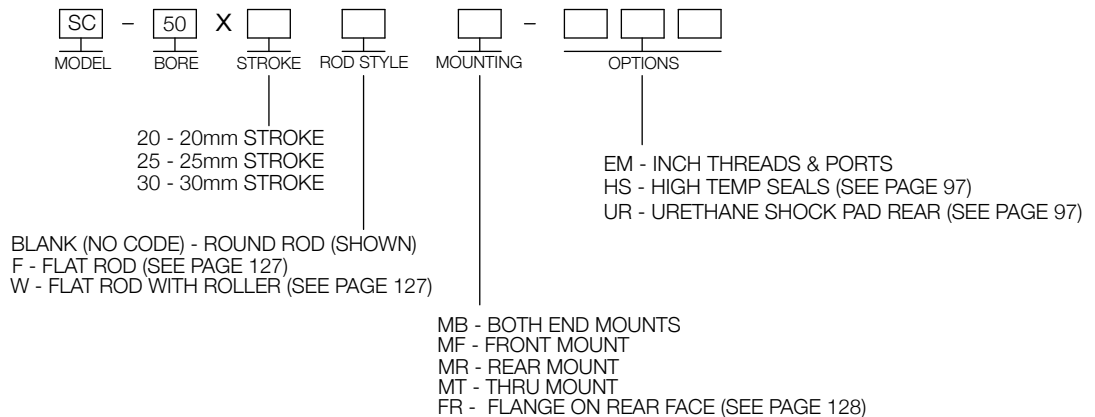
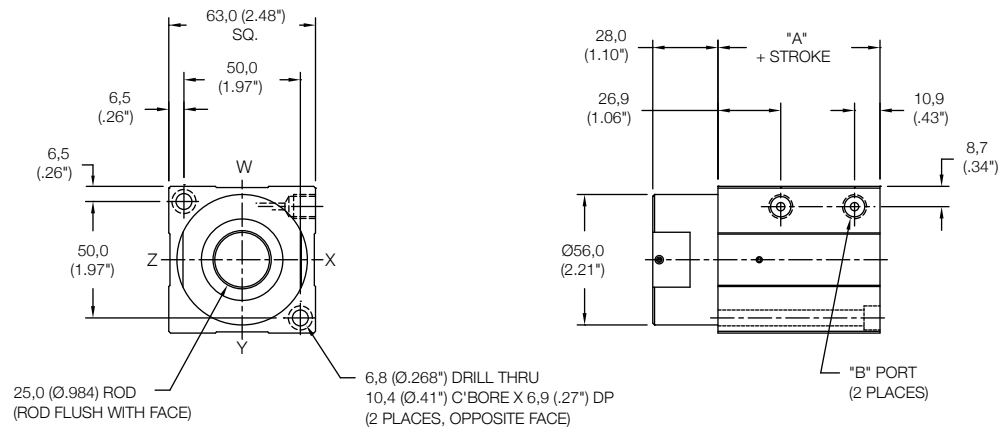
	Standard Threads	"EM" Option
"B"	G 1/8 PORT	1/8-27
"C"	M8X1,25	5/16-18



Non Magnetic Thru Mount Cylinder "MT"

MODEL	STANDARD STROKES	"A"	PISTON AREA
SC	20mm	49,5 (1.95")	PUSH 19,63 cm ² (3.04 in ²) PULL 14,72 cm ² (2.28 in ²)
	25mm		
	30mm		

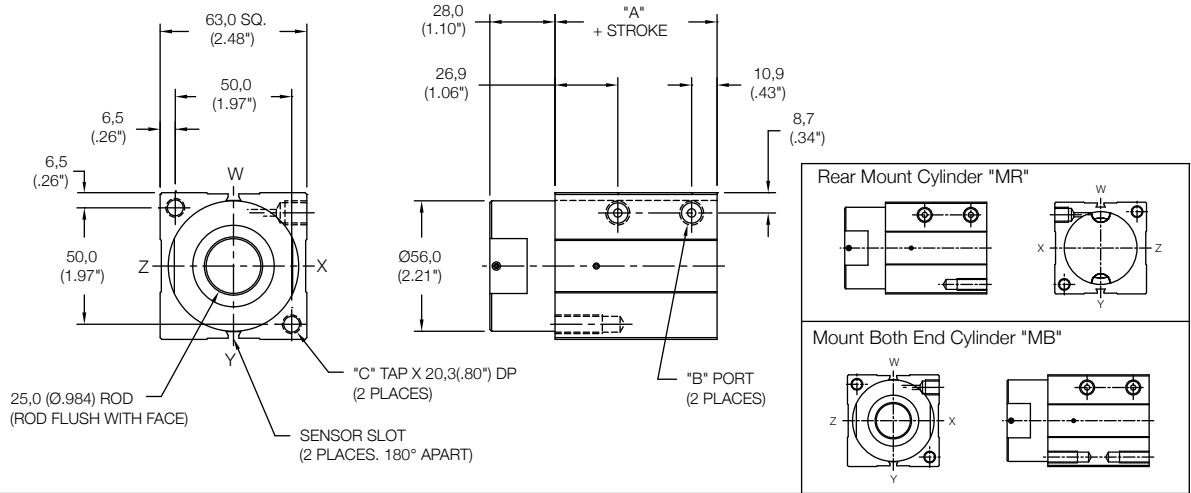
	Standard Threads	"EM" Option
"B"	G 1/8 PORT	1/8-27



Magnetic Front Mount Cylinder "MF"

MODEL	STANDARD STROKES	"A"	PISTON AREA
SC	20mm	49,5 (1.95")	PUSH 19,63 cm ² (3.04 in ²) PULL 14,72 cm ² (2.28 in ²)
	25mm		
	30mm		

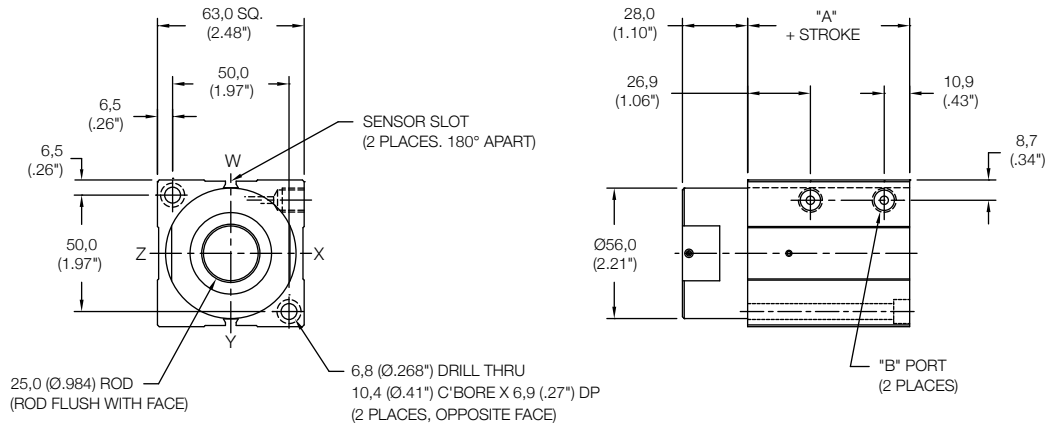
	Standard Threads	"EM" Option
"B"	G 1/8 PORT	1/8-27
"C"	M8X1,25	5/16-18



Magnetic Thru Mount Cylinder "MT"

MODEL	STANDARD STROKES	"A"	PISTON AREA
SC	20mm	49,5 (1.95")	PUSH 19,63 cm ² (3.04 in ²) PULL 14,72 cm ² (2.28 in ²)
	25mm		
	30mm		

	Standard Threads	"EM" Option
"B"	G 1/8 PORT	1/8-27



20 - 20mm STROKE
25 - 25mm STROKE
30 - 30mm STROKE

BLANK (NO CODE) - ROUND ROD (SHOWN)
F - FLAT ROD (SEE PAGE 127)
W - FLAT ROD WITH ROLLER (SEE PAGE 127)

EM - INCH THREADS & PORTS
HS - HIGH TEMP SEALS (SEE PAGE 62)
UR - URETHANE SHOCK PAD REAR (SEE PAGE 97)

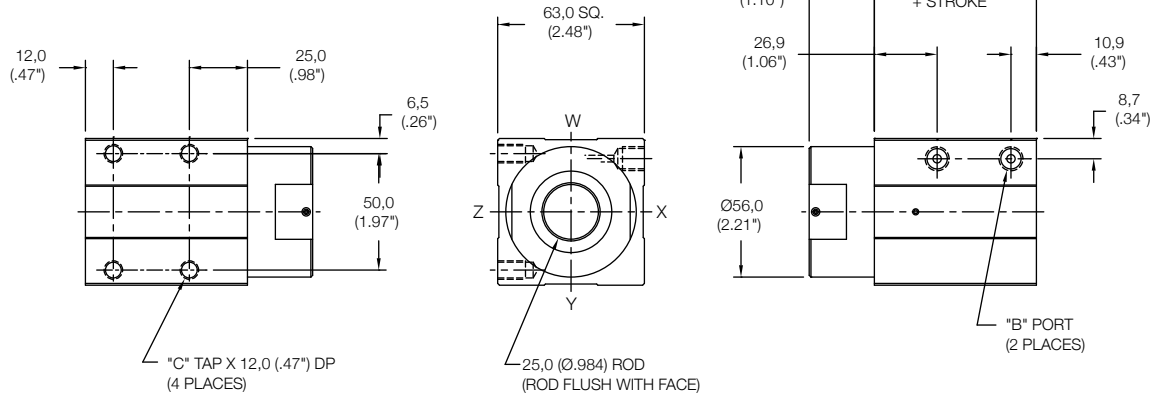
SENSORS SOLD SEPARATELY
SKS, SKP, SCS, SCP - SOLID STATE
LIMIT SENSORS
(SEE PAGE 88 FOR DETAILS)

MB - BOTH END MOUNTS
MF - FRONT MOUNT
MR - REAR MOUNT
MT - THRU MOUNT
FR - FLANGE ON REAR FACE (SEE PAGE 128)

**Non Magnetic
Side Mount Cylinder "MS"**

MODEL	STANDARD STROKES	"A"	PISTON AREA
SC	20mm	49,5 (1.95")	PUSH 19,63 cm ² (3.04 in ²) PULL 14,72 cm ² (2.28 in ²)
	25mm		
	30mm		

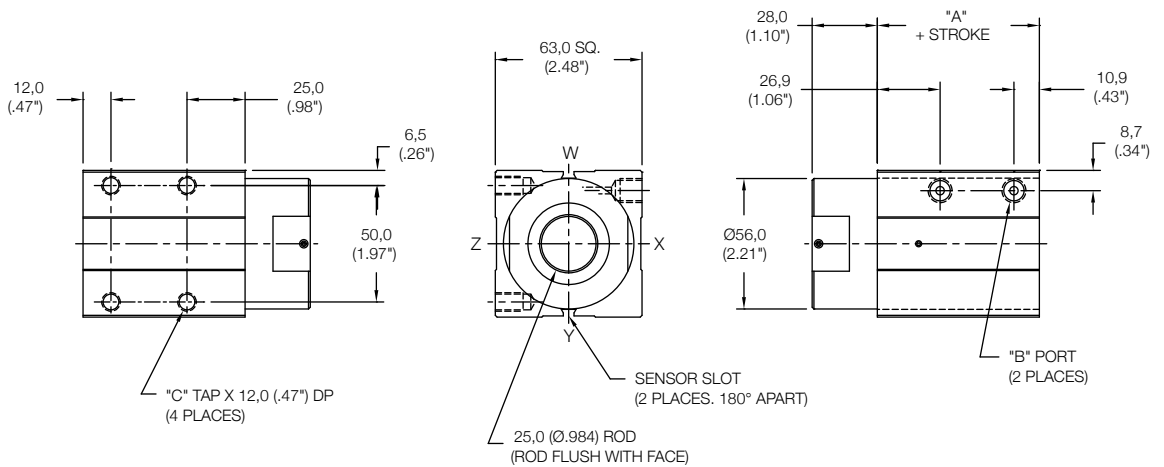
	Standard Threads	"EM" Option
"B"	G 1/8 PORT	1/8-27
"C"	M8X1,25	5/16-18



**Magnetic
Side Mount Cylinder "MS"**

MODEL	STANDARD STROKES	"A"	PISTON AREA
SC	20mm	49,5 (1.95")	PUSH 19,63 cm ² (3.04 in ²) PULL 14,72 cm ² (2.28 in ²)
	25mm		
	30mm		

	Standard Threads	"EM" Option
"B"	G 1/8 PORT	1/8-27
"C"	M8X1,25	5/16-18



20 - 20mm STROKE
25 - 25mm STROKE
30 - 30mm STROKE

MS - SIDE THREADS
FS - SIDE FLANGES
(SEE PAGE 128)

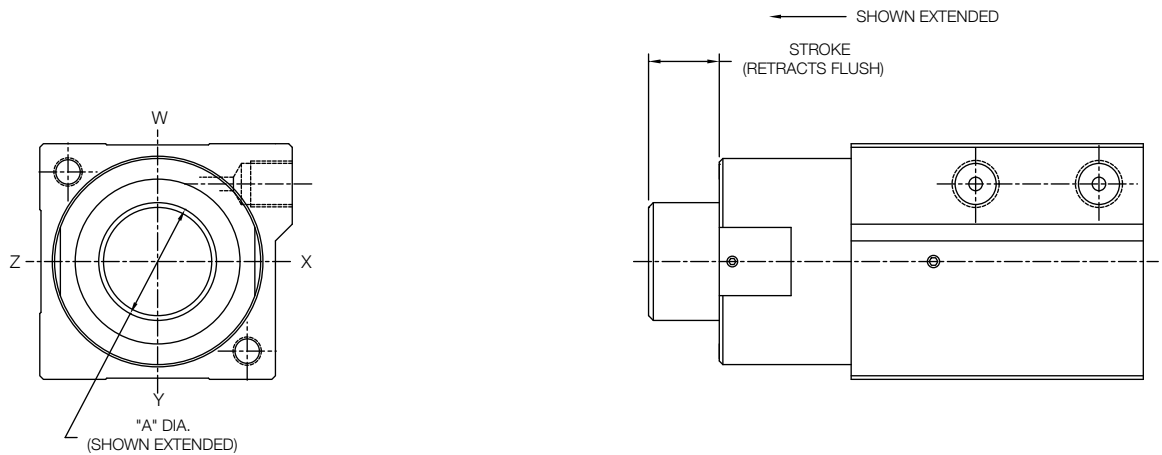
EM - INCH THREADS & PORTS
HS - HIGH TEMP SEALS (SEE PAGE 97)
UR - URETHANE SHOCK PAD REAR
(SEE PAGE 97)

BLANK (NO CODE) - ROUND ROD (SHOWN)
F - FLAT ROD (SEE PAGE 127)
W - FLAT ROD WITH ROLLER (SEE PAGE 127)

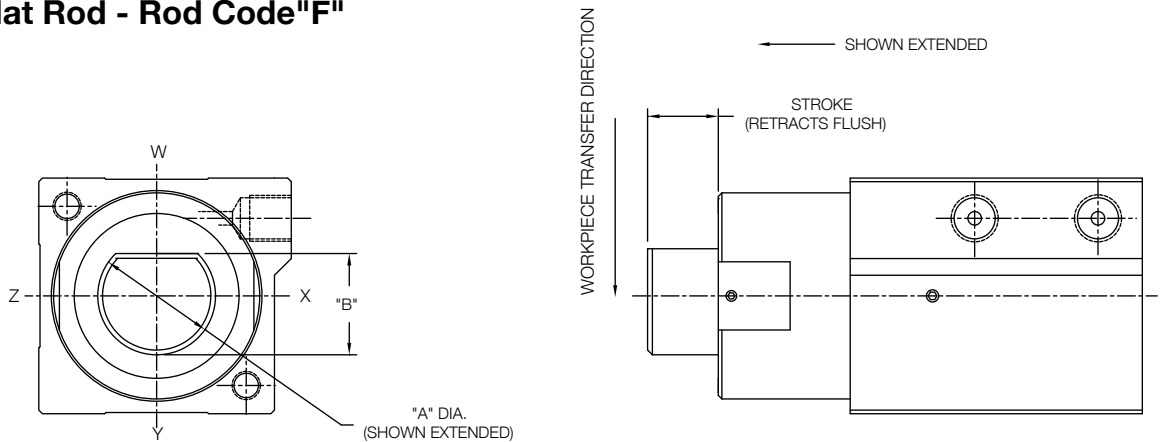
BLANK (NO CODE) - STANDARD "NO MAGNET" PISTON
M - MAGNETIC PISTON AND SENSOR MOUNTING SLOTS

SENSORS SOLD SEPARATELY
SKS, SKP, SCS, SCP - SOLID STATE
LIMIT SENSORS
(SEE PAGE 88 FOR DETAILS)

Round Rod - Rod Code Blank (No Code)

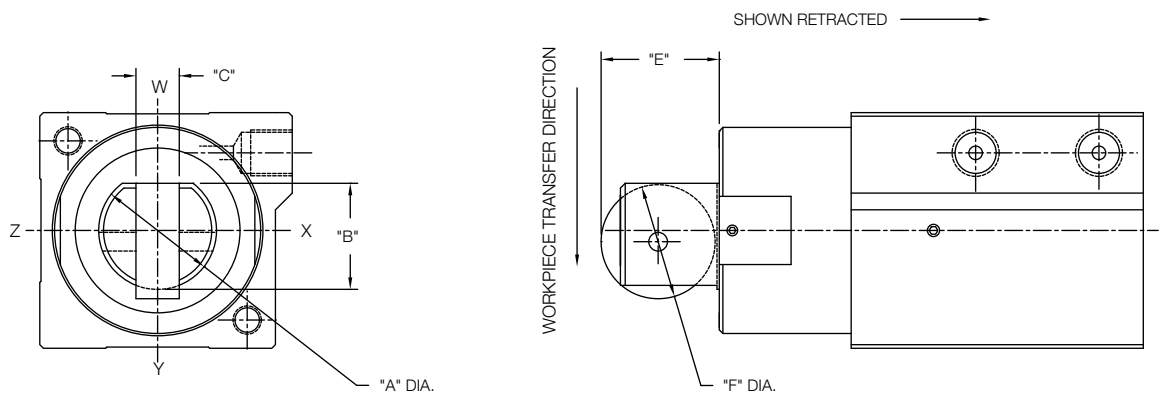


Flat Rod - Rod Code "F"



Standard orientation for flat is side "W". Flat can be reoriented to any position.

Flat Rod With Roller - Rod Code - "W"

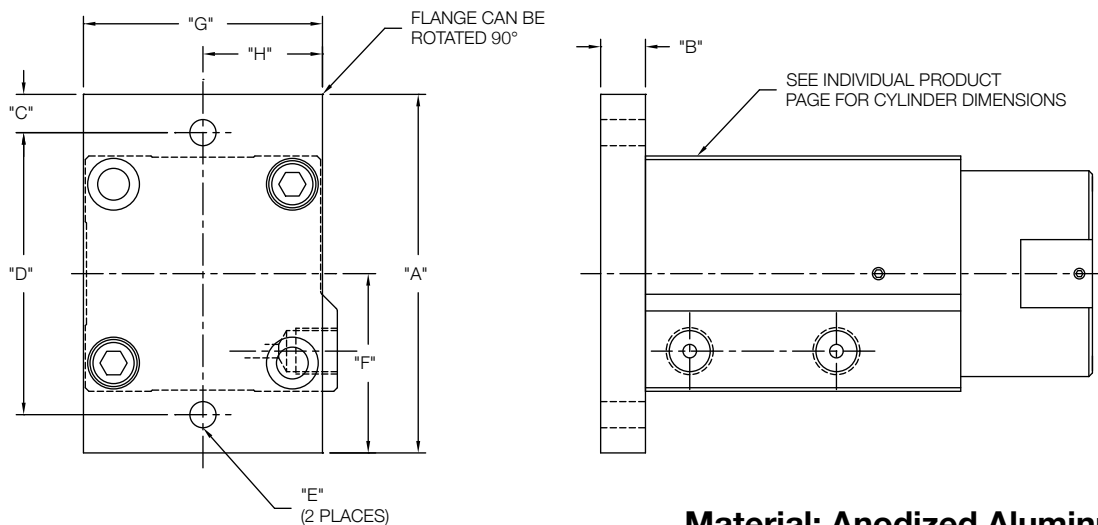


Standard orientation for flat is side "W". Flat can be reoriented to any position.

Bore	"A"	"B"	"C"	"D"	"E"	"F"
20	10,0(0.394")	8,0(0.315")	3,5 (.14")	6,35(0.25")	8,5 (0.33")	8,0 (0.32")
25	12,0(0.472")	10,0(0.394")	4,0(.16")	8,6(0.34")	11,0 (.43")	10,0 (0.39")
32	20,0(0.787")	18,0(0.709")	8,0 (.32")	17,0(0.67")	19,0 (.75")	18,0 (0.71")
40	25,0(0.984")	22,5(0.886")	9,0 (.35")	20,6(0.81")	25,0 (.98")	24,0 (0.95")
50	25,0(0.984")	22,5(0.886")	9,0 (.35")	20,6(0.81")	25,0 (.98")	24,0 (0.95")

- Rod shown extended on Round Rod and Flat Rod Styles
 - Roller material: Plastic

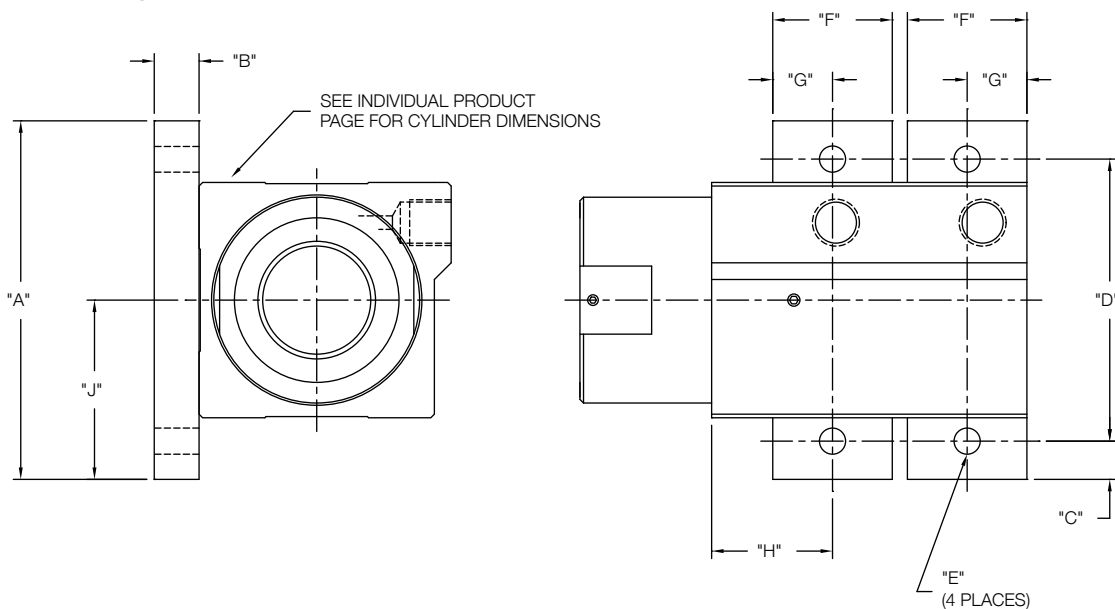
Rear Face Flange Mount - "FR"



Material: Anodized Aluminum

Bore	"A"	"B"	"C"	"D"	"E"	"F"	"G"	"H"
20	50,8 (2.0")	9,5 (.38")	5,4 (.21")	40,0 (1.58")	4,5 (.18")	25,4 (1.0")	31,8 (1.25")	15,9 (.63")
25	3,9 (.15")		43,0 (1.69")	38,1 (1.50")			19,05 (.75")	
32	63,5 (2.5")	9,5 (.38")	5,75 (.23")	52,0 (2.05")	5,5 (.22")	31,8 (1.25")	44,5 (1.75")	22,25 (.88")
40	76,2 (3.0")		8,1 (.32")	60,0 (2.36")				38,1 (1.50")
50	93,0 (3.66")	12,7 (.50")	7,5 (.30")	78,0 (3.07")	8,5 (.33")	46,5 (1.83")	63,5 (2.50")	31,8 (1.25")

Side Flange Mount - "FS"



Material: Anodized Aluminum

Bore	"A"	"B"	"C"	"D"	"E"	"F"	"G"	"H"	"J"
20	50,8 (2.00")	9,5 (.38")	5,4 (.21")	40 (1.58")	4,5 (.18")	19 (.75")	9,5 (.38")	20,0 (.79")	25,4 (1.0")
25			3,9 (.15")	43 (1.69")					
32	63,5 (2.50")	9,5 (.38")	5,75 (.23")	52 (2.05")	5,5 (.22")	25,4 (1.00")	12,7 (.50")	16,25 (.64")	31,8 (1.25")
40	76,2 (3.00")		8,1 (.32")	60 (2.36")				38,1 (1.50")	38,1 (1.50")
50	93 (3.66")	12,7 (.50")	7,5 (.30")	78 (3.07")	8,5 (.33")			25,75 (1.01")	46,5 (1.83")