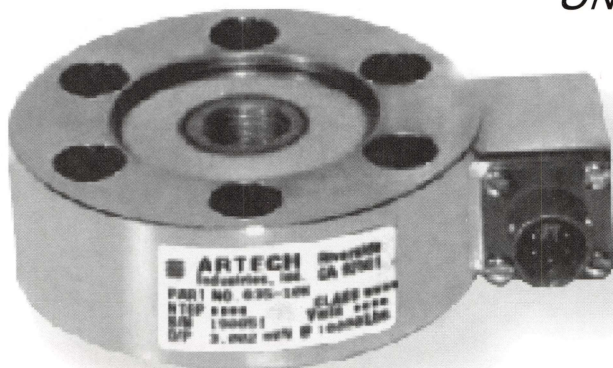




*"a preferred name in load cell technology"*

### MODEL 835 / SS835

### UNIVERSAL LOW PROFILE LOAD CELL



#### FEATURES:

- TENSION / COMPRESSION LOADING
- ALLOY STEEL, STAINLESS STEEL OR ALUMINUM
- SHEAR WEB DESIGN
- N.I.S.T. TRACEABLE CALIBRATION
- HERMETICALLY SEALED, IP67
- FATIGUE RATING OF  $(1 \times 10^7)$  CYCLES
- MOUNTING BASE (OPTIONAL)
- 20 FEET OF CABLE OR M.S. CONNECTOR

#### DESCRIPTION:

THIS PRECISION LOAD TRANSDUCER USES THE LATEST IN SENSOR TECHNOLOGY. THE SS835 RESPONDS TO BOTH COMPRESSION AND TENSION LOADING. AVAILABLE IN *STAINLESS STEEL* QUALIFIES THIS CELL IN THE MOST DEMANDING APPLICATIONS WITH THE ASSURANCE OF HIGH ACCURACY AND LONG LIFE STABILITY.

### SPECIFICATIONS

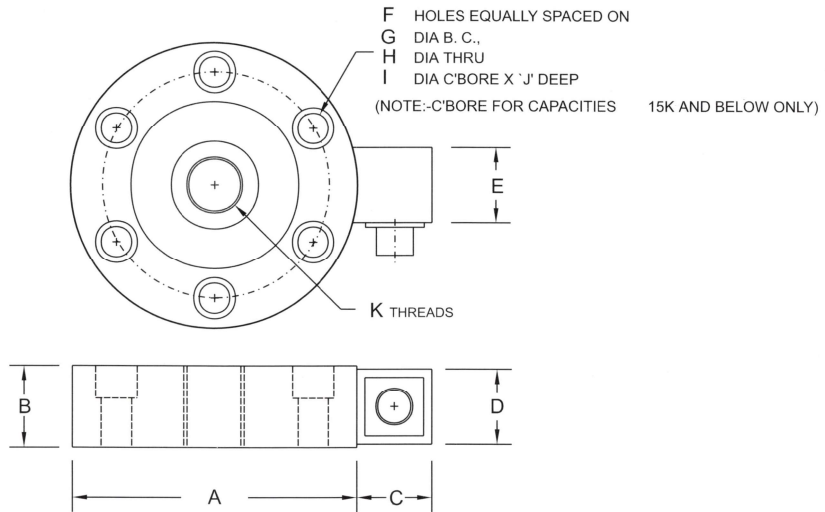
STANDARD CAPACITIES:	1K, 2K, 3K, 4K, 5K, 7.5K, 10K, 15K, 20K, 30K, 50K, 75K, 100K, 150K & 200K LBS.
EXCITATION VOLTAGE:	10 VDC MAXIMUM 15VDC
RATED OUTPUT:	3.0 OR 4.0 MV/V (NOMINAL)
NON-LINEARITY:	$\pm 0.1\%$ F.S.O. (FULL SCALE OUTPUT)
HYSTERESIS:	$\pm 0.1\%$ F.S.O.
NON-REPEATABILITY:	$\pm 0.03\%$ F.S.O.
ZERO BALANCE:	$\pm 1.0\%$ F.S.O.
BRIDGE RESISTANCE	
INPUT:	350 OHMS NOMINAL
OUTPUT:	350 OHMS, + 3.5
INSULATION RESISTANCE:	5000 MEGOHMS
SAFE OVERLOAD:	150% OF RATED CAPACITY
OFF CENTER LOAD ERROR:	0.01% F.S.O.
ALLOWABLE SIDE LOAD:	30% LOAD CAPACITY
ALLOWABLE BENDING FORCE:	25% LOAD CAPACITY
ALLOWABLE TORQUE:	25% LOAD CAPACITY
DEFLECTION:	0.003"
TEMPERATURE:	
COMPENSATED RANGE:	0 TO 150° F
OPERATING:	-65° TO +250° F
EFFECT ON OUTPUT:	<0.002% F.S.O./° F
EFFECT ON ZERO:	<0.002% F.S.O./° F
MATERIAL:	STAINLESS STEEL
CABLE LENGTH:	20FEET

*SPECIFICATIONS ARE SUBJECT TO CHANGE WITHOUT NOTICE.*



# DIMENSIONS

VARIOUS HOLE PATTERNS  
AVAILABLE FOR OTHER  
POPULAR MODELS.

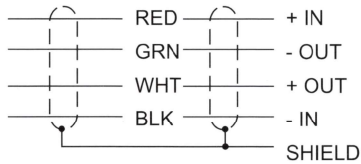


CAPACITY	DASH #	A DIA.	B	C	D	E	F	G DIA.	H DIA.	I DIA.	J DP.	K THD.
1K, 2K, 3K, 4K, 5K	- 1	3.50	1.00	0.95	0.96	1.50	6	2.625	0.34	0.525	0.34	1/2-20UNF-2B
7.5K, 10K, 15K	- 2	5.50	1.80	1.25	1.50	1.50	8	4.500	0.40	0.578	0.40	1-14UNS
20K, 30K, 50K	- 3	6.00	1.80	1.25	1.50	1.50	8	4.875	0.53	---	---	1-1/2-12UNS
75K, 100K	- 4	9.00	2.50	1.25	1.50	1.50	12	7.750	0.66	---	---	2-12UNS
150K, 200K	- 5	11.00	3.00	1.25	1.50	1.50	12	9.500	0.78	---	---	2-1/2-12UNS

## ELECTRICAL TERMINATION

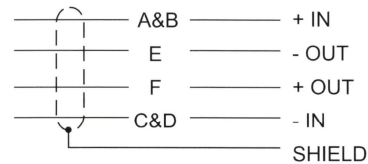
### CABLE

COMPRESSION POSITIVE



### CONNECTOR

COMPRESSION POSITIVE

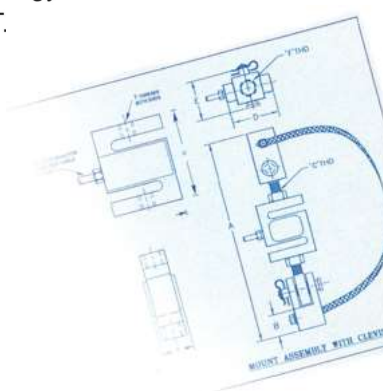


Artech's calibration is traceable to the National Institute of Standards Technology (N.I.S.T.). Each sensor is thoroughly tested and is calibrated to meet N.I.S.T. Handbook 44.

Represented by:



1966 Keats Drive, Riverside, CA 92501



## ORDER INFORMATION

- ◆ ARTECH is dedicated to maintaining adequate inventories of its Load Cells to provide the best service in the industry.
- ◆ Order by the model number and indicate the capacity required.

- ◆ Custom services such as matched load cell outputs, special threading, and custom calibrations are available on an optional basis at an extra cost.

**Let us know what you need... we listen!**  
**QUALITY • PERFORMANCE • SERVICE**

• (951) 276-3331 • (800) 654-8181 • Fax: (951) 276-4556 •  
Email: info@artechindustriesinc.com • www.artechindustriesinc.com