



*"a preferred name in load cell technology"*

### MODEL 50110 / SS50110

## MINI BEAM LOAD CELL

### FEATURES:

- TENSION / COMPRESSION LOADING
- HIGH NATURAL FREQUENCY
- ALLOY STEEL, STAINLESS STEEL, ALUMINUM
- N.I.S.T. TRACEABLE CALIBRATION
- ENVIRONMENTALLY SEALED, IP63/65
- 150% SAFE LOAD
- 2 YEAR WARRANTY
- 5 FEET OF CABLE



### DESCRIPTION:

THIS PRECISION LOAD TRANSDUCER USES THE LATEST IN SENSOR TECHNOLOGY. THE 50110 RESPONDS TO BOTH COMPRESSION AND TENSION LOADING. AVAILABLE IN ALLOY STEEL, STAINLESS STEEL OR ALUMINUM, SYSTEM ENGINEERS CAN SELECT THE HIGHEST NATURAL FREQUENCY FOR SYSTEM ACCURACY.

THE PURITY AND THE STRENGTH OF THE *STAINLESS STEEL* QUALIFIES THIS CELL IN THE MOST DEMANDING APPLICATIONS WITH THE ASSURANCE OF HIGH ACCURACY AND LONG LIFE STABILITY.

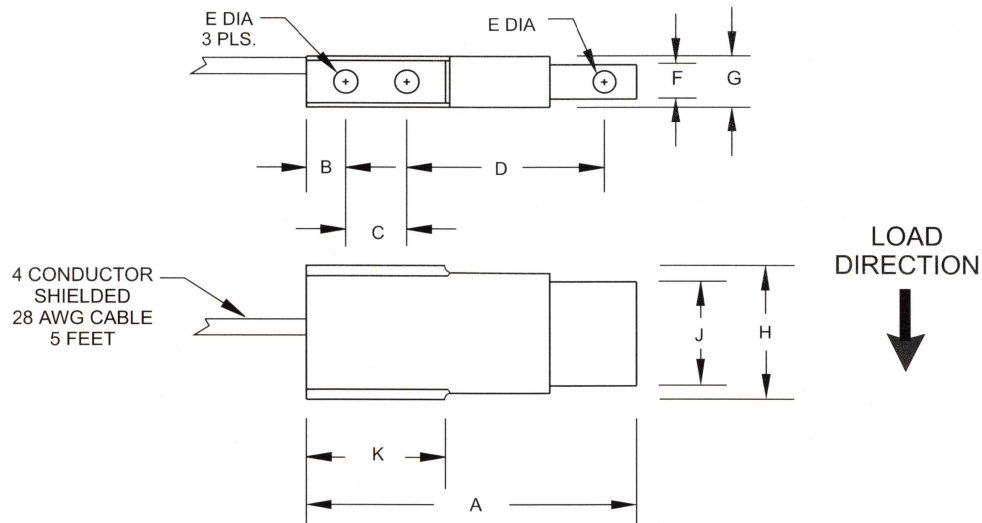
## SPECIFICATIONS

STANDARD CAPACITIES:	*2, *5, *10, 25, 50, 75, 100, 150 & 250 Lbs.
EXCITATION VOLTAGE:	10 VDC MAXIMUM 15VDC
RATED OUTPUT:	3.0 mV/V (NOMINAL)
NON-LINEARITY:	± 0.03% F.S.O. (FULL SCALE OUTPUT)
HYSTERESIS:	± 0.02% F.S.O.
NON-REPEATABILITY:	± 0.01% F.S.O.
ZERO BALANCE:	± 1.0% F.S.O.
BRIDGE RESISTANCE	
INPUT:	350 OHMS NOMINAL
OUTPUT:	350 OHMS, + 3.5
INSULATION RESISTANCE:	5000 MEGOHMS
SAFE OVERLOAD:	150% OF RATED CAPACITY
TEMPERATURE:	
COMPENSATED RANGE:	0 TO 150° F
OPERATING:	-65° TO +250° F
EFFECT ON OUTPUT:	0.0008% F.S.O./ ° F
EFFECT ON ZERO:	0.0011% F.S.O./ ° F
MATERIAL:	ALLOY STEEL, STAINLESS STEEL OR ALUMINUM
CABLE LENGTH:	5 FEET

*\*2, 5 & 10 LB. - AVAILABLE ONLY IN ALUMINUM.*



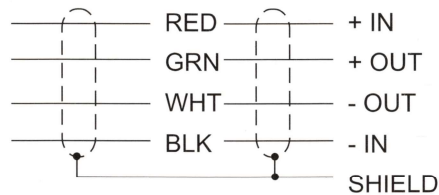
## DIMENSIONS



DASH No	CAPACITY (LBS)	A	B	C	D	EØ	F	G	H	J	K
-1	2 - 25	2.38	0.25	0.50	1.31	0.172	0.25	0.50	1.00	0.75	0.97
-2	50 - 150	2.38	0.25	0.50	1.31	0.172	0.25	0.50	1.00	0.75	0.97
-3	250	2.38	0.25	0.50	1.31	0.172	0.50	0.75	1.00	0.75	0.97

## ELECTRICAL TERMINATION

### COMPRESSION POSITIVE

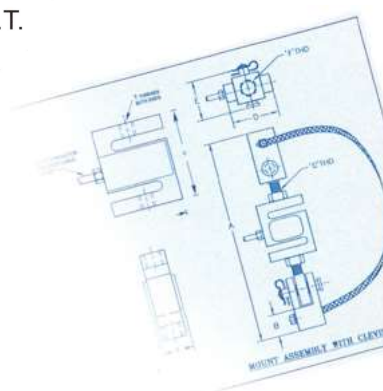


Artech's calibration is traceable to the National Institute of Standards Technology (N.I.S.T.). Each sensor is thoroughly tested and is calibrated to meet N.I.S.T. Handbook 44.

Represented by:



**1966 Keats Drive, Riverside, CA 92501**



## ORDER INFORMATION

- ◆ **ARTECH** is dedicated to maintaining adequate inventories of its Load Cells to provide the best service in the industry.
- ◆ Order by the model number and indicate the capacity required.

- ◆ Custom services such as matched load cell outputs, special threading, and custom calibrations are available on an optional basis at an extra cost.

**Let us know what you need... we listen!**  
**QUALITY • PERFORMANCE • SERVICE**

• (951) 276-3331 • (800) 654-8181 • Fax: (951) 276-4556 •  
 Email: [info@artechindustriesinc.com](mailto:info@artechindustriesinc.com) • [www.artechindustriesinc.com](http://www.artechindustriesinc.com)