

RemoteAV

AIR VELOCITY SENSOR



The Remote AV Sensor is the ideal solution for unidirectional flow and ventilation monitoring in cleanroom environments and for HVAC applications.

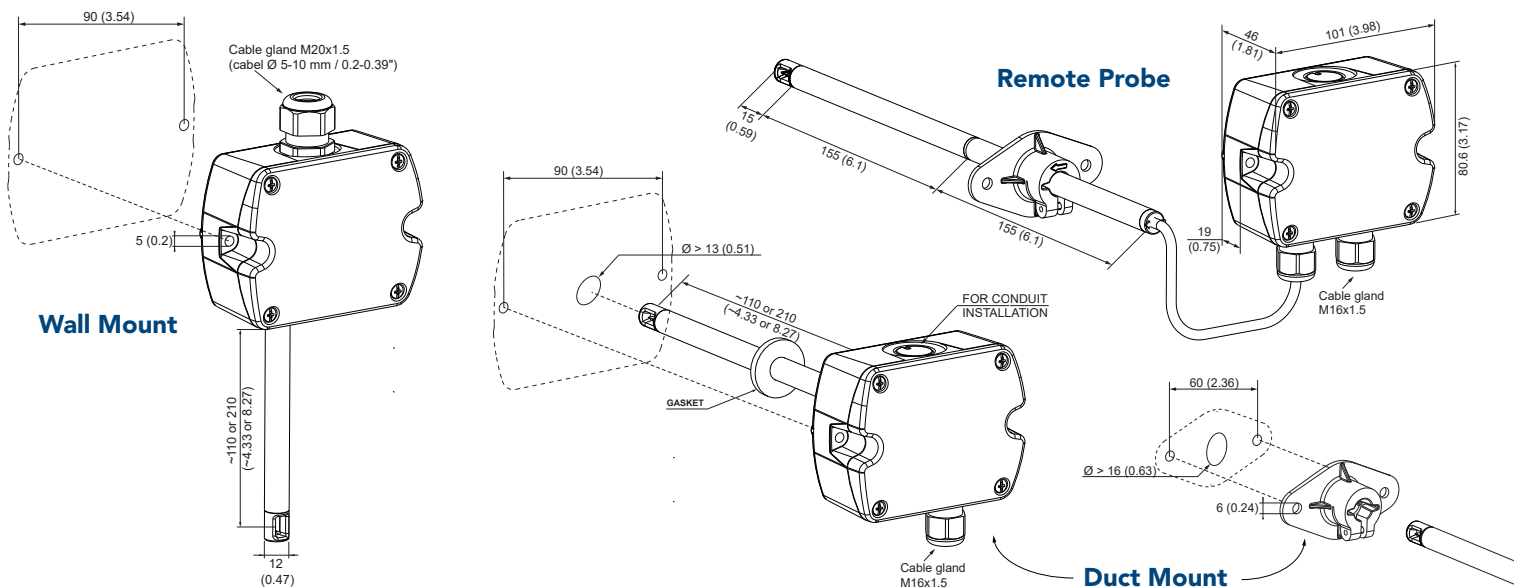
The Remote AV Sensor has a highly accurate sensor for measurement of low air velocity and is most suitable for cleanroom and controlled environment device monitoring such as isolators, cabinets and biological safety cabinets. With its excellent high accuracy thin film sensor the Remote AV Sensor offers great accuracy at low velocities down to 0.15m/s (30ft/min).

With an LCD option with backlight the Remote AV Sensor allows for high visibility in process conditions, lower angular dependence allows for an easy and low risk installation.

Only one CAT 5/6 cable is required for power and communications.

FEATURES

- Smooth Cover and Cleanroom Friendly Enclosure
- Long Term Sensor Stability
- Large Easy Readable Display
- Easy to Install
- Bayonet Screws for Easy Access $\frac{1}{4}$ Turn Rotation
- Protected PCB
- IP65/NEMA4 Rating
- Remote Probe Option
- Wall Mounted or Duct Mounted Options



TECHNICAL DATASHEET

RemoteAV Air Velocity Sensor

Measured Values

Working range ¹⁾	0...1 m/s (0...200ft/min), 0...1.5 m/s (0...300ft/min), 0...2 m/s (0...400ft/min)		
Output	4 - 20 mA		
0...1 m/s 0...1.5 m/s 0...2 m/s	0.15...1 m/s (30...200 ft/min)	±(0.04 m/s (7.9 ft/min))	+2% of mv
Accuracy at 20 °C (68 °F),	0.15...1.5 m/s (30...300 ft/min)	±(0.05 m/s (9.8 ft/min))	+2% of mv
45 % RH, 1013 hPa	0.15...2 m/s (30...400 ft/min)	±(0.06 m/s (11.8 ft/min))	+2% of mv
Response time τ_{90} ^{1) 2)}	Typ. 4 sec or typ. 1 sec (at constant temperature)		

General

Power supply	24V AC/DC ± 20%
Current consumption for AC supply	max. 180 mA rms (with display), 74 mA rms (without display)
Current consumption for DC supply	max. 85 mA rms (with display), 41 mA rms (without display)
Display	Optional
Angular dependence	< 3% of the measured value at $\Delta\alpha < 10^\circ$
Electrical connection	Screw terminals max. 1.5 mm ² (AWG 16)
Cable gland	M16x1.5
Electromagnetic compatibility	EN61326-1, EN61326-2-3 - Industrial Environment
Housing material	Polycarbonate, UL94V-0 (with Display UL94HB) approved
Protection class	Enclosure IP65 / NEMA4, remote probe IP20
Working range humidity	Relative Humidity 5...95 % non-condensing
Temperature ranges	Working temperature probe -25 ... +50 °C (-13...122°F) Working temperature electronic -10 ... +50 °C (14...122°F) Storage temperature -30 ... +60 °C (-22...140°F)

¹⁾ Selectable by jumper

²⁾ Response time τ_{90} is measured from the beginning of a step change of air velocity to the moment of reaching 90% of the step.

Distributed By:



Lighthouse Worldwide Solutions reserves the right to change specifications without notice.