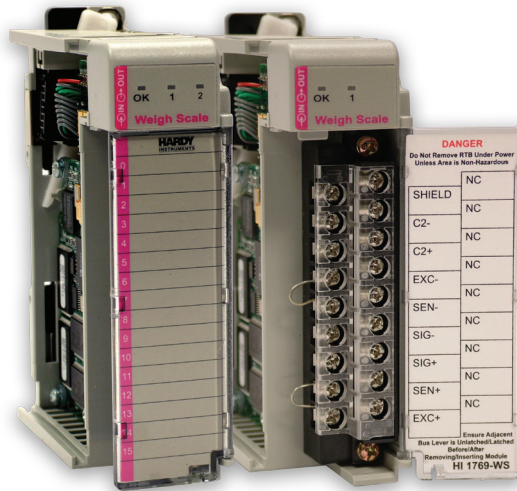


**Models HI 1769-WS HI 1769-2WS**  
**Weigh Scale Module**

**Applications**

**PROCESS WEIGHING**

- Batching/Blending
- Filling/Dispensing
- Level-by-Weight
- Check Weighing



**Features**

**THE HARDY PROCESS TOOLBOX**

The Hardy Process Toolbox is a set of productivity tools that support process weighing functions. Each tool saves time, increases accuracy, improves efficiency or reduces risk in process weighing applications.



**C2® and eCAL™ Electronic Calibration**  
 Electronic calibration without test weights



**WAVERSAVER®**  
 Ignores vibration on and around scales

**INTEGRATED TECHNICIAN®**  
 Weighing system monitoring and troubleshooting



**Add-On-Profile (AOP)**  
 Rockwell Automation configuration files that provides access to device data in a user-friendly manner

**HM Faceplates/AOIs**  
 SE and ME software instruction tags for the controller and graphics for the HMI to reduce GUI development time

Hardy's compact weigh scale module is available in single or dual channel models for use in Rockwell® CompactLogix® PLC controllers (and certain MicroLogix™ 1500). The HI 1769-2WS and HI 1769-WS read and condition weight and diagnostic data from strain gauge load sensors or load cells and communicate this data over the I/O chassis backplane to the PLC processor. Both modules reduce installation costs, as they do not require an external Ethernet switch or router.

The HI 1769-WS conditions and digitizes the weight signal 110 times per second with over eight million counts of resolution over a differential signal range of 0 to 15mV. It then transmits the selectable Gross, Net, Rate-of-change and/or Diagnostics data to the processor. High resolution enables the module to tolerate large dead loads and oversizing of the load sensors, while retaining a high level of usable resolution. The module supplies 5 volts of DC excitation to drive up to four 350-ohm load sensors or load cells associated with a single scale (-WS), or eight load cells associated with a dual (-2WS) scale.

**ADD-ON-PROFILES & FACEPLATE/AOI**

Hardy's pre-programmed and pre-tested integration tools can reduce development time by 50 to 90%. Using a combination of Add-on-Profiles (AOPs) and SE and ME HMI Faceplates with Add-on-Instructions, creates a synergistic method for EASY and seamless integration for weighing with Rockwell PLCs/PACs using RSLogix® and Studio 5000®.

Two or three bi-color LEDs on the module's front panel report functional characteristics. A clear door and removable label enable positioning of your own unique information and viewing once the door is closed.

**C2® ELECTRONIC CALIBRATION**

C2 enables electronic calibration of the weigh system without test weights. This saves system start-up costs and aggravation. Of course, even if C2 certified load sensors are not used, the system can still be calibrated the slow, traditional way using certified test weights.

**WAVERSAVER®**

WAVERSAVER eliminates the effects of unwanted vibration on or around the scale by permitting the weigh module to "see" through the unwanted vibration signals - as low as 0.25Hz - while yielding a stable actual reading.

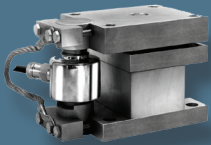
**INTEGRATED TECHNICIAN®**

INTEGRATED TECHNICIAN, used in conjunction with an IT Junction Box, provides built-in system diagnostics that enable you to troubleshoot and diagnose your weighing system. You can read individual load sensor voltages and weights, make comparisons, and isolate individual system components for quick and easy troubleshooting.

## COMPONENTS TO COMPLETE YOUR HARDY SYSTEM

### Hardy Bench Scales, Floor Scales and Load Points

Hardy carries a wide variety of strain gauge load points and scale bases to accommodate your application requirements.



ADVANTAGE Series Load Point with C2 Calibration



Hardy Bench Scales & Floor Scales

### Weighing Instruments Dedicated to Your Applications

Controllers, Weigh Modules, Weight Processors

Allen-Bradley® Compatible Plug-in Weigh Scale Modules



HI 3000 Series HI 4050 Controllers and HI 6000 Series



## SPECIFICATIONS

### Power

- Provided from the backplane of the rack: +5Vdc

### Backplane Current

- < 0.5 Amps @ 5Vdc

### Inputs

- Signal, -0.3mV through +15.3 mV
- Sense, +5Vdc
- C2® Electronic Calibration Diagnostics data

### Outputs

- Excitation 5Vdc

### Common Mode Rejection

- 100dB at or below 60 Hz (minimum)

### Resolution

- Internal, 1:8,388,608

### Vibration Frequency Rejection

- 0.25 Hz and above in 5 selectable steps
- WEVERSAVER®

### Weight

- 0.6 lb (0.27 kg)

### Environmental Conditions

- Operating Temperature: 0 to 60°C(32 to 140°F)
- Storage Temperature: -40 to 65°C(-40 to 185°F)

### Relative Humidity

- 5 to 95% (non-condensing)

### Weighing Modes

- Net, Gross, Rate-of-change

### Calibration

- Electronic (C2)
- Traditional (test weights)

### Conversion Rate

- 100 updates per second

### Approvals

- UL/CUL, CE
- Class I, Div 2, Group A, B, C & D

### Indicators

- "OK" Module Status, bi-color LED
- "Scale 1" Functional Data, bi-color LED
- "Scale 2" Functional Data, bi-color LED

### Warranty

- Two-year warranty against defects in workmanship

All specifications subject to change without notice. Please contact the Hardy factory or visit our website for the latest specifications.

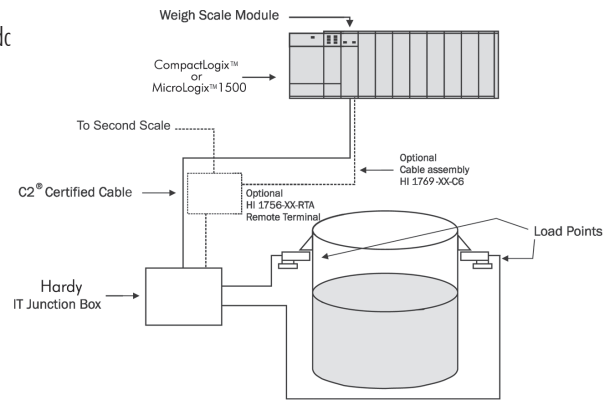
To learn more about the HI 1769-WS / HI 1769-2WS, visit our web site for:

- full product specifications
- ordering information
- application notes
- technical description
- operator's manual

[www.hardysolutions.com](http://www.hardysolutions.com)

or call us: 800-821-5831  
+ 1-858-278-2900

## TYPICAL CONFIGURATION



## OPTIONS

### Remote Termination Assembly (-RTA)

The weigh scale module optional Remote Termination Assembly provides connection points between the cable assembly to the module and individual wires from the junction box, or load sensors, of up to two scales. The RTA is designed for standard DIN mounting rails or standoffs. With an HI 1769-RTA configuration, the weigh scale modules can be replaced without disturbing the wiring.

### Cable (-C6 -DC6)

Hardy provides an optional 6-foot cable assembly from the weigh scale module to the remote termination assembly for both single and dual configuration.

### Options Ordering

Options can be ordered at the same time the module is ordered by adding the dash designators to the end of the module number.

### For example:

HI 1769-WS	Single weigh scale module alone
HI 1769-2WS	Dual weigh scale module alone
HI 1769-XX-RTA	Remote termination panel alone; supports two single-scale and one dual-scale module
HI 1769-XX-C6	Single-scale 6-foot (1.8m) cable from RTA to a single module
HI 1769-XX-DC6	Dual-scale 6-foot (1.8m) cable from RTA to 2 single modules or one dual module
HI 1769-WS-RTA-C6	Single weigh scale module with remote termination assembly and cable
HI 1769-2WS-RTA-DC6	Dual weigh scale module with remote termination assembly and cable

**HARDY**  
PROCESS SOLUTIONS  
Measurement • Automation • Productivity

### Hardy Process Solutions

9440 Carroll Park Dr.  
San Diego, CA 92121  
tel. +1-858-278-2900  
tel. 800-821-5831  
fax +1-858-278-6700  
[www.hardysolutions.com](http://www.hardysolutions.com)  
[hardyinfo@hardysolutions.com](mailto:hardyinfo@hardysolutions.com)



HI 1769-0718