



## TYPE: TCA



# TCA Stainless Steel Tension & Compression Load Cell

## Description

The TCA series load cell is ideal for measuring both tensile and compressive forces. The standard metric threads at each end of the load cell are designed to accept standard spherical seating rod-end bearings.

There is great flexibility in the TCA design, allowing us to offer special sizes to meet specific application requirements, or different end thread sizes/combinations. There are versions available with male threads at each end, or male threads at one end and female at the other. We are also happy to supply any of the TCA series with imperial thread sizes.

The TCA series can be supplied as shown in this datasheet or can be modified to meet a particular application requirement. We are always pleased to discuss any special requirements that can be accommodated.

The TCA series can be supplied on its own or combined with our extensive range of instrumentation to provide a complete load monitoring system.

## Features

- Ranges from 1 to 150 tonnes
- Stainless steel construction
- Special sizes and ranges available
- Can be supplied with imperial threads & male or male/female end threads
- Can be supplied complete with mating spherical rod-end bearings\*
- Environmentally sealed to IP66 (IP67 and submersible versions are also available)

\* Our 1, 3, 5 and 7.5 tonne versions can be used with standard rod end bearings. All other capacities require heavy duty rod end bearings. Please contact a member of the LCM Sales Team if these are required.

## Specification

Rated load (tonnes)	1, 2, 3, 5, 7.5, 10, 20, 30, 50, 75, 100, 150	
Proof load	150% of rated load	
Ultimate breaking load	>300% of rated load	
Output	1.5mV/V nominal	
Accuracy	<±0.2% of rated load	
Non-repeatability	<±0.1% of rated load	
Excitation voltage	10vdc recommended, 15vdc maximum	
Bridge resistance	1te: 350Ω, 2 to 50te: 700Ω, 75 to 150te: 1400Ω	
Insulation resistance	>500MΩ @ 500vdc	
Operating temperature range	-20 to +70°C (-20 to +55°C for Ex d versions)	
Compensated temperature range	-10 to +50°C	
Zero temperature coefficient	<±0.01% of rated load/°C	
Span temperature coefficient	<±0.01% of rated load/°C	
ATEX certification details	Ex i	II 2G Ex ib IIC T4 Gb / II 2D Ex ib IIIC T135°C Db
	Ex d	II 2G Ex d IIC T6 Gb / II 2D Ex tb IIIC T85°C Db
Environmental protection level	IP66 (IP67 optional)	
Connection type	Integrated bayonet lock connector, supplied with 5 metre mating cable assembly	
Wiring connections	+supply: Red	-supply: Blue
	+signal: Green	-signal: Yellow

## Available Options

- Special ranges and sizes available
- Different thread arrangements
- Hazardous Area certified - Explosion Proof (Ex d) and Intrinsically Safe (Ex i)
- Special electrical connections
- Submersible versions available
- TEDS option when used with TR150 handheld display (Not available with Hazardous Area versions)

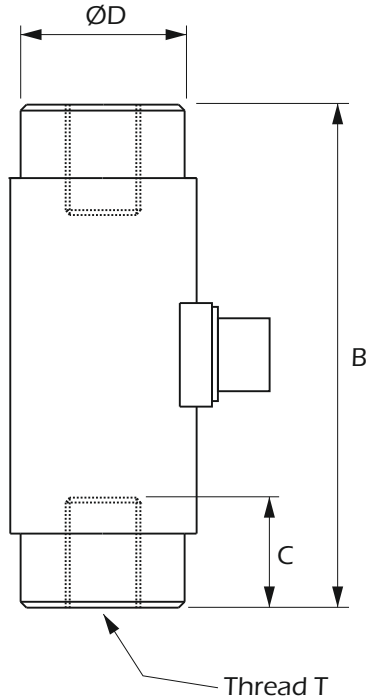
## Typical Applications

- Structural testing
- Jack load monitoring
- Cable tension monitoring
- Material test machine feedback
- Press load monitoring



# TCA Stainless Steel Tension & Compression Load Cell

## Dimensions



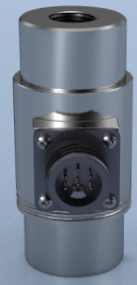
All dimensions are in mm

Rating (tonnes)	B	C	ØD	Thread T	Weight (kgs)	Resolution (tonnes)
1	76	16	31	M12 x 1.25	0.4	0.001
2	76	16	31	M12 x 1.25	0.4	0.002
3	84	22	38	M20 x 1.5	0.7	0.005
5	84	22	38	M20 x 1.5	0.7	0.005
7.5	108	29	44	M24 x 2	1.3	0.01
10	108	29	44	M24 x 2	1.3	0.01
20	203	50	57	M36 x 3	3.3	0.02
30	355	89	114	M64 x 4	20	0.02
50	355	89	114	M64 x 4	20	0.05
75	458	100	130	M100 x 3	35.7	0.05
100	458	100	130	M100 x 3	35.7	0.1
150	458	100	156	M100 x 3	40.5	0.2

**Note 1:** Default calibration of load cells rated up to 20 tonnes will be in tension. TCAs rated 30 tonnes and above will be in compression. If you require calibration in a different mode to the standard or in both tension & compression, please state at time of order (additional charges may apply).

**Note 2:** Part numbers for ATEX versions will be suffixed with either -ATEX-D (explosion proof) or -ATEX-I (intrinsically safe) e.g. TCA-75-D-ATEX-D.

**Note 3:** Dimensions may change for hazardous area versions.



www.lcmsystems.com

### LCM Systems Ltd

Unit 15, Newport Business Park, Barry Way  
Newport, Isle of Wight PO30 5GY UK  
Tel: +44 (0)1983 249264  
sales@lcm systems.com  
www.lcm systems.com

### LCM Systems (România)

Strada Ștefan Cel Mare 26a,  
Tunari, cod.077180, Ilfov, România  
Tel: +40 (0)77 4641899  
ro@lcm systems.com  
www.lcm systems.ro

Due to continual product development, LCM Systems Ltd reserves the right to alter product specifications without prior notice.

### Issue No. 5

Issue date: 03/02/2021  
APPROVED  
(unapproved if printed)