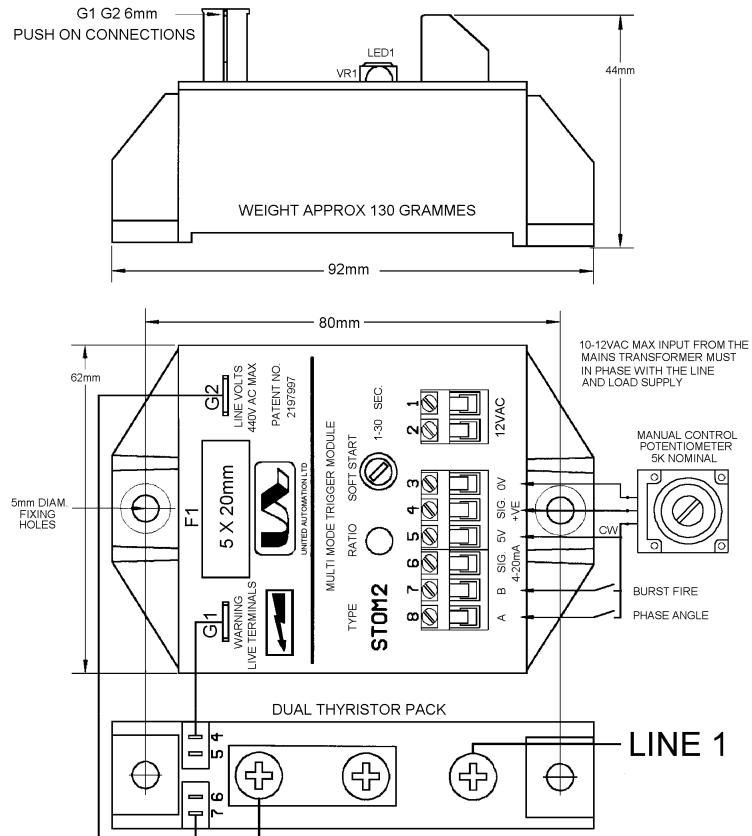


## INSTALLATION



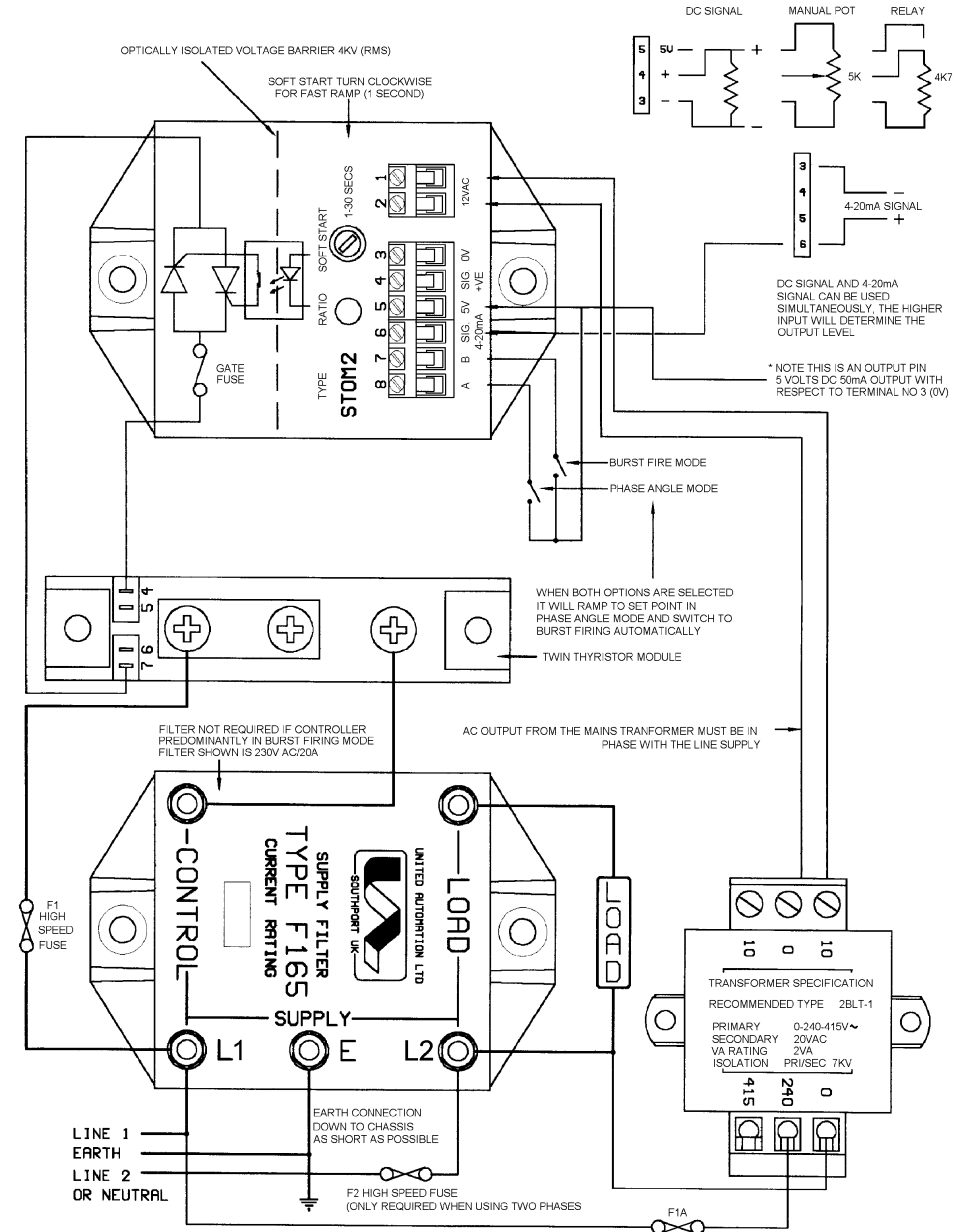
**CONTROL OPTIONS**  
 DC INPUT  
 VOLTAGE CONTROL  
 TERMINALS 3,4 AND 5  
 3 = 0V  
 4 = 0 TO 5V  
 5 = 5V OUTPUT  
 5K INPUT  
 CURRENT CONTROL  
 TERMINALS 3 AND 6  
 3 = 0V  
 6 = 4-20mA  
 240R INPUT

**MODE A PHASE ANGLE**  
 TERMINAL A AND 5  
 A = 5V  
 5 = 5V  
**MODE B BURST FIRE**  
 TERMINALS B AND 5  
 B = 5V  
 5 = 5V  
**MODE A AND B START IN**  
 PHASE ANGLE SWITCHING  
 TO BURST FIRE  
 TERMINAL A,B AND 5  
 A = 5V  
 B = 5V  
 5 = 5V

**PHASE REFERENCE AND**  
 SUPPLY TERMINALS 1 AND 2  
 10V TO 18V AC AT 75 mA  
**OUTPUT CONNECTIONS G1, G2**  
 UP TO 440V ac MAX  
 50 TO 60 Hz +/- 5  
 GATE CURRENT 1A MAX

**WARNING**  
 SWITCH OFF SUPPLY BEFORE COMMENCING  
 ANY SERVICE WORK

## INSTALLATION



MATCH MAINS SUPPLY FILTER TO THE SUPPLY VOLTAGE AND MAX. LOAD CURRENT IN ORDER TO COMPLY WITH BSEN 550081-2 WHEN USED IN PHASE ANGLE MODE

## SPECIFICATIONS

Min. line voltage	5V ac	Trigger output rating	1A
Max. line voltage	440V ac	Power consumption	1.2W
Operating frequency	50 to 60 Hz +/- 5%	Mono-link fuse	F100mA (HRC)
Max. electrical isolation	4kV ac	Soft-start	1-30 sec
ac input supply	10 - 18V ac @ 75mA	Auxiliary output	5V dc
Storage temp. range	0 to 85°C	Control signals	0-5V dc & 4-20mA
Max operating temp.	0 to 65°C	Gate terminals	6.3mm x 0.8mm

## FUSING

It is recommended to use semiconductor fast acting type fuses or circuit breakers (Semiconductor-MCB) for unit/device protection. On initial 'switch on' some loads may need an increased Factor of Safety (F of S) for unit and/or device protection.

See the SRA datasheet for further information.

## CE MARKING

This product family carries a "CE marking". These phase angle controllers need a suitable remote filter. For information see recommendation section and contact our sales desk.

See the Declaration of Conformity.

## RECOMMENDATION

Other documents available on request, which may be appropriate for your applications.

CODE	IDENTITY	DESCRIPTION
X10229	RFI	Filtering recommendation - addressing EMC directive.
X10213	ITA	Interaction, uses for phase angle and for burst fire control.
X10255	SRA	Safety requirements - addressing the Low Voltage Directive (LVD) including :-Thermal data/cooling ; "Live" parts warning & Earth requirements; Fusing recommendations.
X10378	ILR	Inductive loads remedy sheet for use with Phase angle controllers
P01.1	COS	UAL Conditions of sale

**NOTE:** It is recommended that installation and maintenance of this equipment should be done with reference to the current edition of the I.E.T. (formally I.E.E.) regulations (BS7671) by suitably qualified/trained personnel. The regulations contain important requirements regarding installation and safety of electrical equipment. Specific installers should refer to local and national regulations.

## ORDER CODE:

State part number:

**STOM2**

Optional extras include:

Potentiometer, supply transformer, thyristor module, filter.



**MICROPROCESSOR BASED  
10V TO 440V DUAL  
MODE TRIGGER MODULE**

**STOM2**

**X10245**

## DESCRIPTION

The STOM2 is a microprocessor based trigger module capable of driving most power thyristors. The STOM2 has two modes of triggering control, phase-angle and burst-firing either can be selected separately. The module can also be used for soft-starting in phase-angle mode and it will automatically switch to burst-fire mode when the control signal has reached a preset level. The STOM2 has a soft-start from power up which can be set from 0-30 seconds. The signal inputs are fully isolated operating from either 0-5V dc or 4-20mA - accepting signals from temperature controllers, manual potentiometers, microprocessors etc.

## APPLICATIONS

Suitable for most resistive and inductive loads including ovens, moulders, and dryers Ideal for unusual heating loads which have very low resistance when cold.

## FEATURES

Energy saving  
Simple wiring  
Isolated inputs

Soft start-facility  
Standard 80mm fixing  
Rugged and compact

Phase-angle or burst-firing  
Solid-state reliability  
Load status indicator

## INSTALLATION

**RoHS Compliant**



## UNITED AUTOMATION LIMITED

Southport Business Park  
Wight Moss Way  
Southport, PR8 4HQ  
ENGLAND

Tel: 0044 (0) 1704 - 516500  
Fax: 0044 (0) 1704 - 516501  
enquiries@united-automation.com  
www.united-automation.com

Page No. 2 of 2

Issue 5

Date 07/02/2019



015