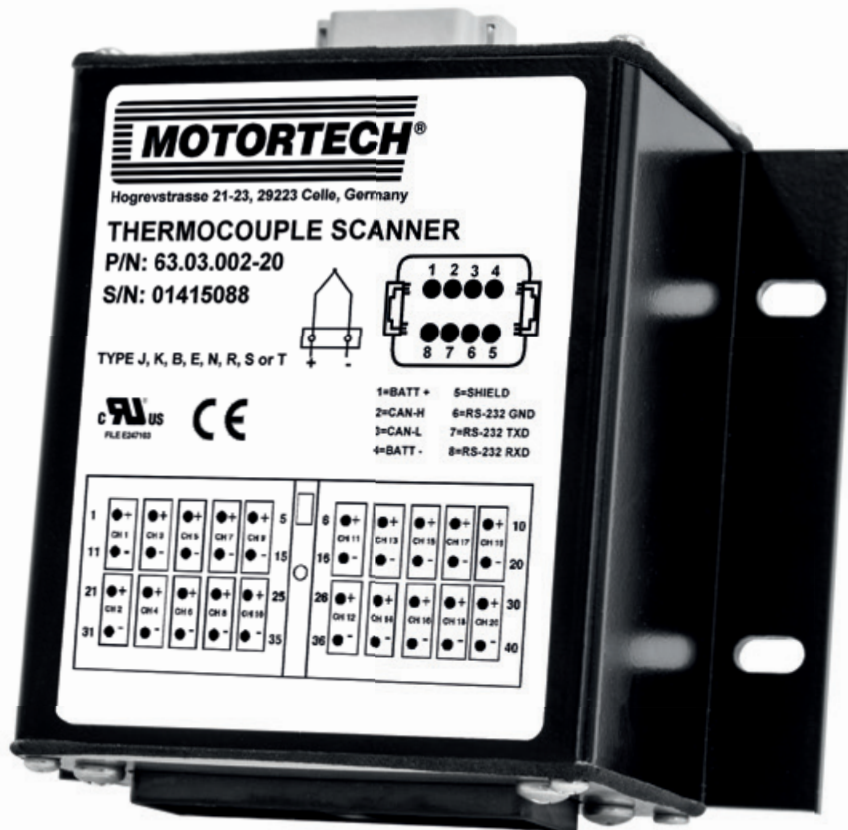


TempScan20

MOTORTECH Temperature Module
with 20 Channels



General Information

TempScan20

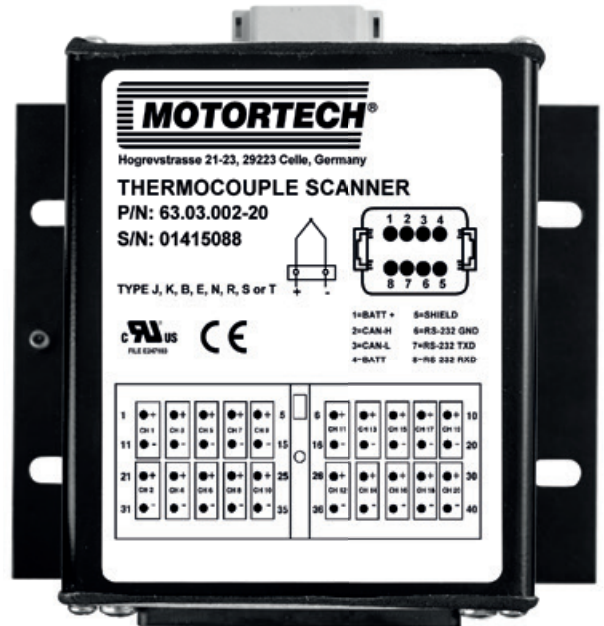
MOTORTECH TEMPERATURE MODULE

TempScan20 MOTORTECH Temperature Module with 20 Channels

The TempScan20 temperature module monitors up to 20 thermocouples and provides the temperature information to the PowerView3 HMI module via CANopen.

Features

- Channels are independently configurable as Type B, E, J, K, N, R, S or T thermocouples
- Temperature information can include
 - Exhaust temperature
 - Winding temperature
 - Fluid temperature
- No additional programming or configuration required
- Integral diagnostics determine thermocouple integrity
- All channels are fully isolated from the CAN line and from the power supply.
- The temperature module features rugged packaging and watertight connectors for an IP67 rating.



Technical Data

General

- 20 channels, independently configurable for B, E, J, K, N, R, S or T type thermocouples
- Scan Rate of 100 ms per channel, total sweep time maximum 2.4 seconds
- 150 ppm/°C of span (maximum) thermal drift
- Digital isolation is 500 VDC from input to ground.
- Three way isolation is provided for the CAN line, inputs and power supply
- Provides reverse polarity protection. Power supply input section protects against transient surges and short circuits and is isolated from thermocouple inputs.
- Open circuit, frozen data, over or under temperature and high temperature shutdown detection
- 9 to 32 VDC power supply
- 40 °C to +85 °C (-40 °F to +185 °F) operating and storage temperature
-40 °C to +70 °C (-40 °F to +158 °F) for operation in hazardous areas

Interfaces

- CAN Bus 2.0b (CANopen protocol)

Certifications

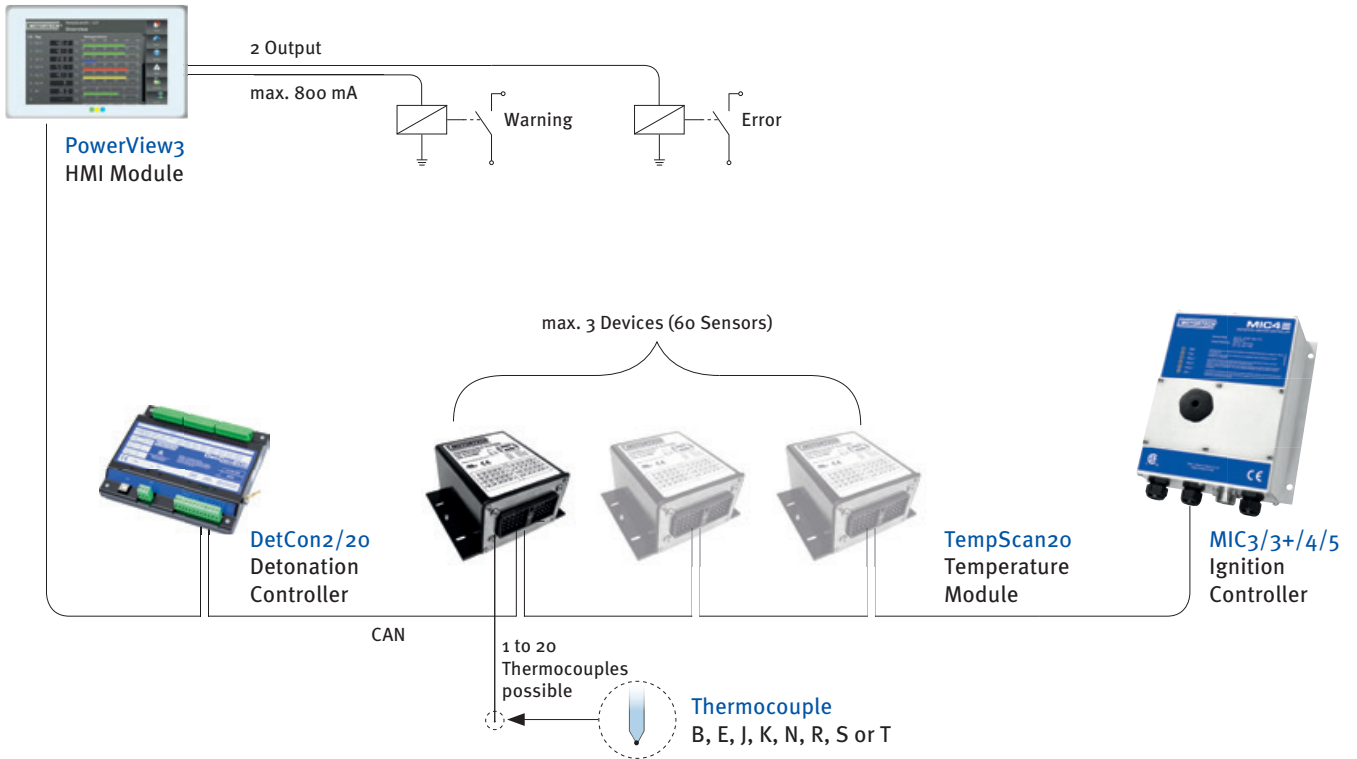
- CSA (Class I, Division 2, Group A, B, C, D; T4)
- ATEX (II 3G Ex nA IIC T4 Gc)

Housing

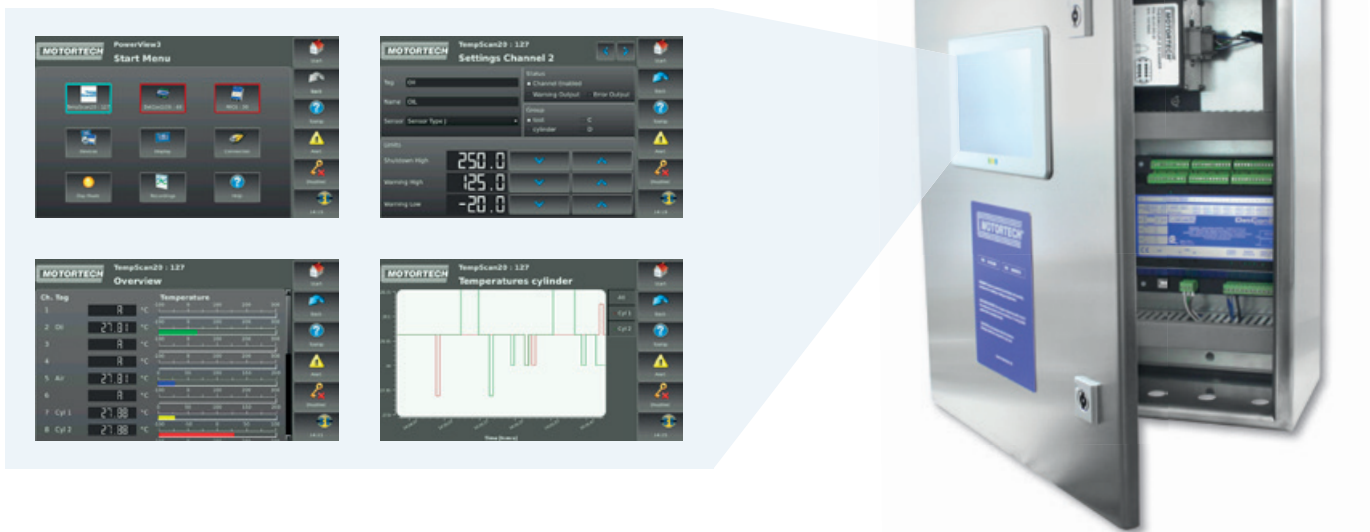
- Rugged aluminum housing, stainless steel end plates, neoprene gaskets
- Protected against 95% humidity non-condensing, 30 °C to 60 °C (86 °F to 140 °F)
- Protection class IP67 (IP54 in hazardous areas)
- 145.30 x 149.00 x 73.00 mm (5.72 x 5.86 x 2.87") L x W x H
- Weight 1.00 kg (2.2 lbs)
- Vibration 4 g per IEC 60068-2-6:2007



System Overview



Visualisation through PowerView3 HMI Module



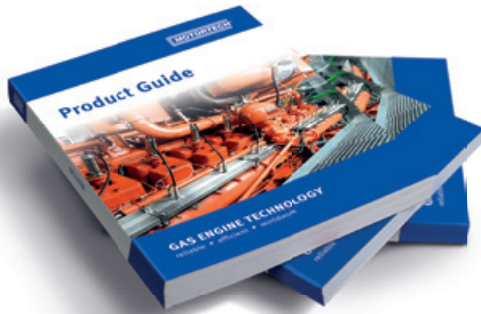
Ordering Information

P/N	Figure	Description
63.03.002-20	1	TempScan20 temperature module, including connector package for power supply, CAN Bus and thermocouple wiring, operating manual
63.03.012-20	2	TempScan20 temperature module, built into stainless steel enclosure, including connector package for power supply, CAN Bus and thermocouple wiring, operating manual



2

Download now!



All Products at a Glance!

For further Information about the MOTORTECH products get our product guide online.



Distribution partner for DENSO spark plugs



Scan QR-Code to get to the download page



Scan QR-Code to subscribe



Once a month the latest news!

Subscription also at www.motortech.de/subscribe.html or send a short request via email: direkt@motortech.de

MOTORTECH GmbH

Hogrevestr. 21-23
29223 Celle
Germany
Phone: +49 (5141) 93 99 0
Fax: +49 (5141) 93 99 99
www.motortech.de
sales@motortech.de

MOTORTECH Americas, LLC

1400 Dealers Avenue, Suite A
New Orleans, LA 70123
USA
Phone: +1 (504) 355 4212
Fax: +1 (504) 355 4217
www.motortechamericas.com
info@motortechamericas.com

MOTORTECH Shanghai Co. Ltd.

Room 1018 Enterprise Square,
No. 228 Meiyuan Road,
Zhabei District, 200070 Shanghai
China
Phone: +86 (21) 6380 7338
www.motortechshanghai.com
info@motortechshanghai.com

P/N 01.35.006-EN | Rev. 06/2019 | MOTORTECH Sales Flyer TempScan20

Copyright

The copyright for all materials used in this MOTORTECH publication is reserved. Any kind of duplication or use of objects such as pictures or texts in other electronic or printed publications without approval by MOTORTECH is not permitted.

Trademark Information

MOTORTECH products and the MOTORTECH logo are registered and/or common law trademarks of MOTORTECH GmbH.

All OEM names and part numbers shown are for reference purposes only. All trademarks, logos and symbols used or shown in this MOTORTECH publication are exclusive objects to the right of their owners and are used for reference purposes only.

Distribution: