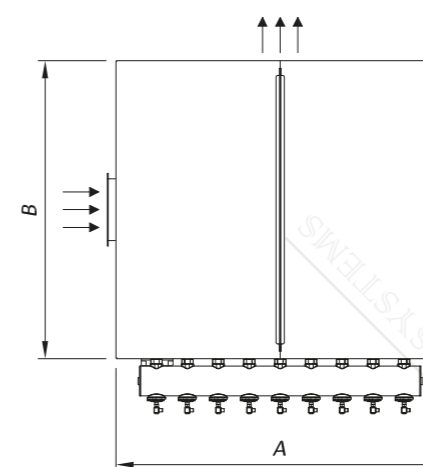
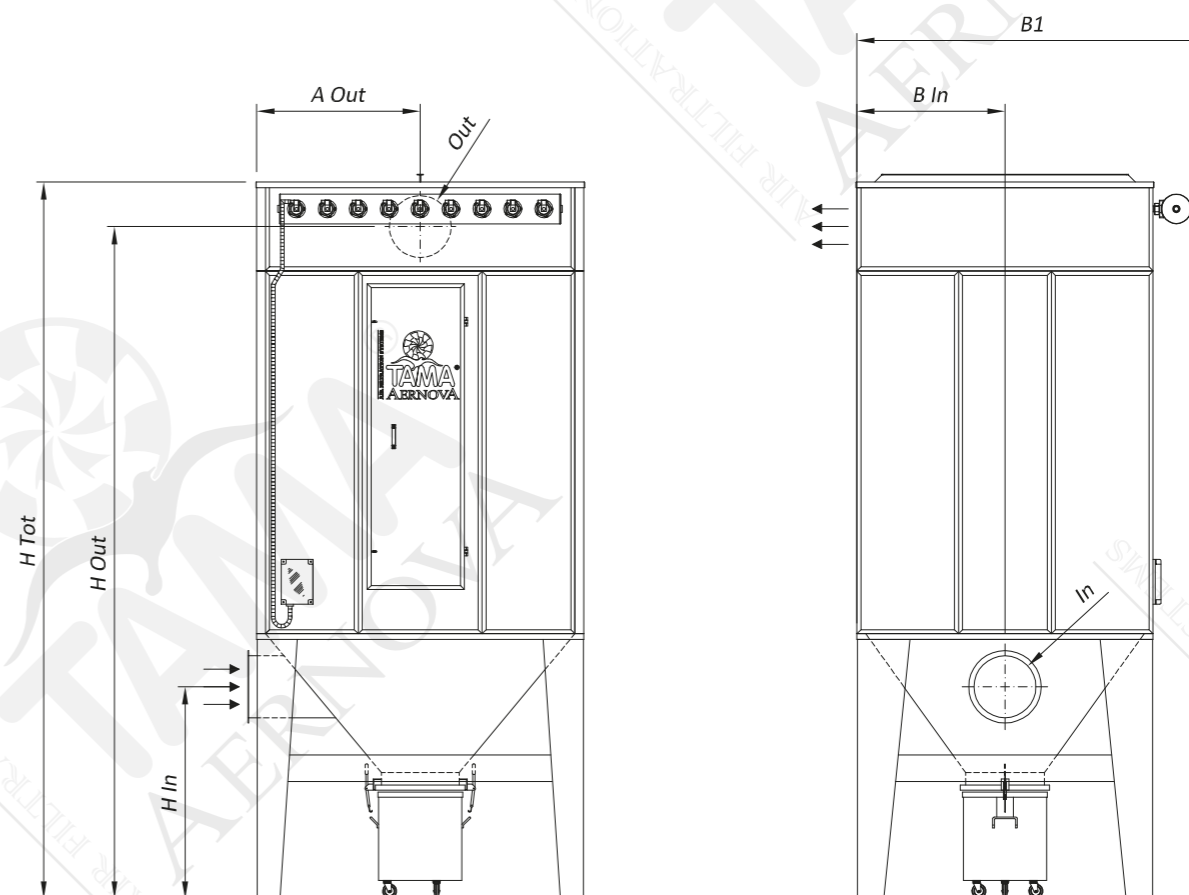
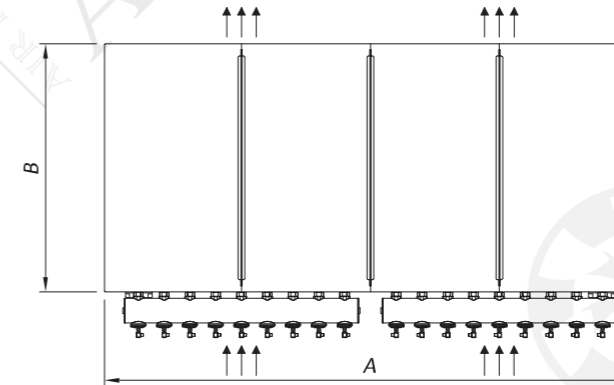
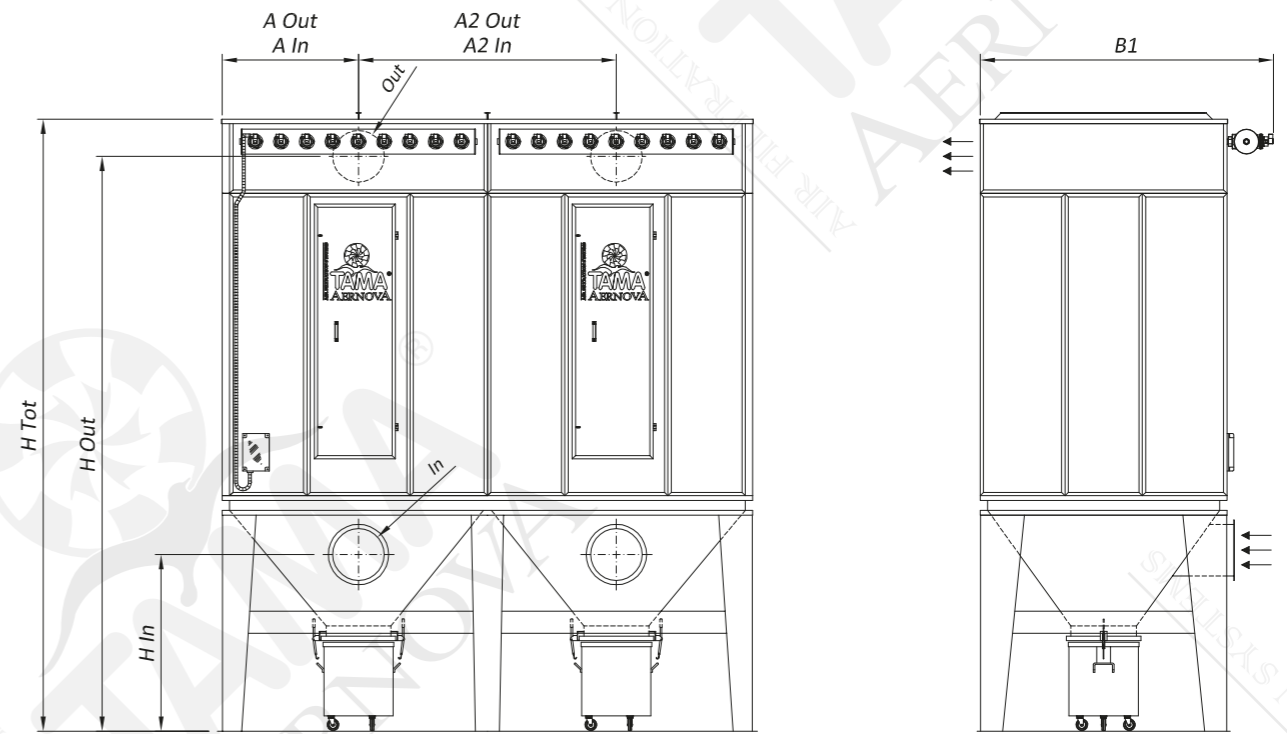


Model	TECHNICAL SPECIFICATIONS				DIMENSIONS										
	Filtering surface [m ²]	Number of filtering elements [-]	Number of cleaning valves [-]	Compressed air consumption [Nl/activation]	A [mm]	B [mm]	B1 [mm]	H Tot [mm]	In [mm]	B In [mm]	H In [mm]	Out [mm]	A Out [mm]	H Out [mm]	Weight [kg]
NSB04x0515	12	20	4	87	975	1150	1470	3311	∅180	575	1110	∅220	487	3055	460
NSB04x0520	15	20	4	87	975	1150	1470	3811	∅200	575	1100	∅250	487	3555	535
NSB04x0525	19	20	4	87	975	1150	1470	4311	∅220	575	1090	∅280	487	4055	585
NSB06x0515	17	30	6	87	1325	1150	1470	3311	∅200	575	1100	∅280	662	3055	545
NSB06x0520	23	30	6	87	1325	1150	1470	3811	∅250	575	1075	∅315	662	3555	620
NSB06x0525	29	30	6	87	1325	1150	1470	4311	∅280	575	1060	∅350	662	4055	695
NSB06x0615	21	36	6	87	1325	1325	1645	3311	∅220	662	1090	∅300	662	3055	600
NSB06x0620	28	36	6	87	1325	1325	1645	3811	∅280	662	1060	∅350	662	3555	700
NSB06x0625	35	36	6	87	1325	1325	1645	4311	∅300	662	1050	350 x 350	662	4055	775
NSB06x0715	24	42	6	87	1325	1500	1820	3561	∅250	750	1325	∅315	662	3305	655
NSB06x0720	32	42	6	87	1325	1500	1820	4061	∅280	750	1310	350 x 350	662	3805	755
NSB06x0725	41	42	6	87	1325	1500	1820	4561	∅315	750	1292	400 x 350	662	4305	855
NSB06x0815	28	48	6	87	1325	1675	1995	3561	∅280	837	1310	∅350	662	3305	710
NSB06x0820	37	48	6	87	1325	1675	1995	4061	∅300	837	1300	400 x 350	662	3805	810
NSB06x0825	46	48	6	87	1325	1675	1995	4561	∅350	837	1275	450 x 350	662	4305	910
NSB07x0715	28	49	7	87	1500	1500	1820	3561	∅280	750	1310	∅350	750	3305	710
NSB07x0720	38	49	7	87	1500	1500	1820	4061	∅315	750	1292	400 x 350	750	3805	810
NSB07x0725	47	49	7	87	1500	1500	1820	4561	∅350	750	1275	450 x 350	750	4305	935
NSB07x0815	32	56	7	87	1500	1675	1995	3561	∅280	837	1310	350 x 350	750	3305	765
NSB07x0820	43	56	7	87	1500	1675	1995	4061	∅315	837	1292	450 x 350	750	3805	890
NSB07x0825	54	56	7	87	1500	1675	1995	4561	∅380	837	1260	550 x 350	750	4305	1015
NSB08x0815	37	64	8	87	1675	1675	1995	3561	∅300	837	1300	400 x 350	837	3305	825
NSB08x0820	49	64	8	87	1675	1675	1995	4061	∅350	837	1275	500 x 350	837	3805	950
NSB08x0825	62	64	8	87	1675	1675	1995	4561	∅400	837	1250	600 x 350	837	4305	1075
NSB09x0815	42	72	9	87	1850	1675	1995	3561	∅315	837	1292	400 x 350	925	3305	855
NSB09x0820	56	72	9	87	1850	1675	1995	4061	∅380	837	1260	550 x 350	925	3805	1005
NSB09x0825	70	72	9	87	1850	1675	1995	4561	∅420	837	1240	700 x 350	925	4305	1130
NSB09x0920	63	81	9	87	1850	1850	2170	4061	∅400	925	1250	600 x 350	925	3805	1065
NSB09x0925	78	81	9	87	1850	1850	2170	4561	∅450	925	1225	750 x 350	925	4305	1215
NSB09x0930	94	81	9	217	1850	1850	2210	5061	∅480	925	1210	900 x 350	925	4805	1390
NSB09x1020	70	90	9	87	1850	2025	2345	4161	∅420	1012	1340	700 x 350	925	3905	1145
NSB09x1025	87	90	9	87	1850	2025	2345	4661	∅480	1012	1310	850 x 350	925	4405	1295
NSB09x1030	104	90	9	217	1850	2025	2385	5161	∅520	1012	1290	1000 x 350	925	4905	1470



TECHNICAL SPECIFICATIONS		
Max working negative pressure	Pa	5000
Working Temperature	°C	-10<T<80
Electric control panel feeding	230 V AC 50Hz	
Bag cleaning system	pulse-jet	
Compressed air tank working pressure	bar	5

TECHNICAL SPECIFICATIONS						DIMENSIONS												
Model	Filtering surface	Number of filtering elements	Number of hoppers	Number of cleaning valves	Compressed air consumption	A	B	B1	H Tot	In	A In	A2 In	H In	Out	A Out	A2 Out	H Out	Weight
	[m ²]	[-]	[-]	[-]	[l/activ]	[mm]	[mm]	[mm]	[mm]	[mm]	[mm]	[mm]	[mm]	[mm]	[mm]	[mm]	[mm]	[kg]
NSB12x0820	74	96	2	12	87	2550	1675	1995	4061	2 x (Ø300)	650	1250	1200	2 x (400 x 350)	662	1225	3805	1385
NSB12x0825	93	96	2	12	87	2550	1675	1995	4561	2 x (Ø350)	650	1250	1175	2 x (450 x 350)	662	1225	4305	1535
NSB12x0830	111	96	2	12	217	2550	1675	2035	5061	2 x (Ø380)	650	1250	1160	2 x (550 x 350)	662	1225	4805	1735
NSB14x0820	87	112	2	14	87	2900	1675	1995	4061	2 x (Ø350)	737	1425	1175	2 x (450 x 350)	750	1400	3805	1525
NSB14x0825	108	112	2	14	87	2900	1675	1995	4561	2 x (Ø380)	737	1425	1160	2 x (550 x 350)	750	1400	4305	1700
NSB14x0830	130	112	2	14	217	2900	1675	2035	5061	2 x (Ø400)	737	1425	1150	2 x (650 x 350)	750	1400	4805	1925
NSB12x1020	93	120	2	12	87	2550	2025	2345	4261	2 x (Ø350)	650	1250	1375	2 x (450 x 350)	662	1225	4005	1630
NSB12x1025	116	120	2	12	87	2550	2025	2345	4761	2 x (Ø380)	650	1250	1360	2 x (600 x 350)	662	1225	4505	1805
NSB12x1030	139	120	2	12	217	2550	2025	2385	5261	2 x (Ø420)	650	1250	1340	2 x (700 x 350)	662	1225	5005	2030
NSB16x0820	99	128	2	16	87	3250	1675	1995	4161	2 x (Ø350)	825	1600	1275	2 x (500 x 350)	837	1575	3905	1690
NSB16x0825	124	128	2	16	87	3250	1675	1995	4661	2 x (Ø400)	825	1600	1250	2 x (600 x 350)	837	1575	4405	1865
NSB16x0830	148	128	2	16	217	3250	1675	2035	5161	2 x (Ø420)	825	1600	1240	2 x (750 x 350)	837	1575	4905	2115
NSB18x0820	111	144	2	18	87	3600	1675	1995	4161	2 x (Ø380)	912	1775	1260	2 x (550 x 350)	925	1750	3905	1830
NSB18x0825	139	144	2	18	87	3600	1675	1995	4661	2 x (Ø420)	912	1775	1240	2 x (700 x 350)	925	1750	4405	2030
NSB18x0830	167	144	2	18	217	3600	1675	2035	5161	2 x (Ø450)	912	1775	1225	2 x (800 x 350)	925	1750	4905	2305
NSB18x0920	125	162	2	18	87	3600	1850	2170	4161	2 x (Ø400)	912	1775	1250	2 x (600 x 350)	925	1750	3905	1920
NSB18x0925	156	162	2	18	87	3600	1850	2170	4661	2 x (Ø450)	912	1775	1225	2 x (750 x 350)	925	1750	4405	2145
NSB18x0930	188	162	2	18	217	3600	1850	2210	5161	2 x (Ø480)	912	1775	1210	2 x (900 x 350)	925	1750	4905	2420
NSB22x0820	136	176	2	22	87	4300	1675	1995	4361	2 x (Ø420)	1087	2125	1440	2 x (650 x 350)	1100	2100	4105	2105
NSB22x0825	170	176	2	22	87	4300	1675	1995	4861	2 x (Ø480)	1087	2125	1410	2 x (850 x 350)	1100	2100	4605	2380
NSB22x0830	204	176	2	22	217	4300	1675	2035	5361	2 x (Ø500)	1087	2125	1400	2 x (1000 x 350)	1100	2100	5105	2680
NSB18x1020	139	180	2	18	87	3600	2025	2345	4161	2 x (Ø420)	912	1775	1240	2 x (700 x 350)	925	1750	3905	2035
NSB18x1025	174	180	2	18	87	3600	2025	2345	4661	2 x (Ø480)	912	1775	1210	2 x (850 x 350)	925	1750	4405	2285
NSB18x1030	209	180	2	18	217	3600	2025	2385	5161	2 x (Ø520)	912	1775	1190	2 x (1000 x 350)	925	1750	4905	2585
NSB24x0820	148	192	3	24	87	4825	1675	1995	4161	3 x (Ø350)	820	1591	1275	3 x (500 x 350)	837	1575	3905	2455
NSB24x0825	185	192	3	24	87	4825	1675	1995	4661	3 x (Ø400)	820	1591	1250	3 x (600 x 350)	837	1575	4405	2730
NSB24x0830	222	192	3	24	217	4825	1675	2035	5161	3 x (Ø420)	820	1591	1240	3 x (750 x 350)	837	1575	4905	3080
NSB27x0820	167	216	3	27	87	5350	1675	1995	4161	3 x (Ø380)	908	1766	1260	3 x (550 x 350)	925	1750	3905	2650
NSB27x0825	209	216	3	27	87	5350	1675	1995	4661	3 x (Ø420)	908	1766	1240	3 x (700 x 350)	925	1750	4405	2950
NSB27x0830	250	216	3	27	217	5350	1675	2035	5161	3 x (Ø450)	908	1766	1225	3 x (800 x 350)	925	1750	4905	3325
NSB27x0920	188	243	3	27	87	5350	1850	2170	4161	3 x (Ø400)	908	1766	1250	3 x (600 x 350)	925	1750	3905	2825
NSB27x0925	235	243	3	27	87	5350	1850	2170	4661	3 x (Ø450)	908	1766	1225	3 x (750 x 350)	925	1750	4405	3150
NSB27x0930	282	243	3	27	217	5350	1850	2210	5161	3 x (Ø480)	908	1766	1210	3 x (900 x 350)	925	1750	4905	3550
NSB30x1020	232	300	3	30	87	5875	2025	2345	4261	3 x (Ø450)	995	1941	1325	3 x (750 x 350)	1012	1925	4005	3245
NSB30x1025	290	300	3	30	87	5875	2025	2345	4761	3 x (Ø500)	995	1941	1300	3 x (950 x 350)	1012	1925	4505	3620
NSB30x1030	348	300	3	30	217	5875	2025	2385	5261	3 x (Ø550)	995	1941	1275	3 x (1150 x 350)	1012	1925	5005	4095
NSB33x1020	255	330	3	33	87	6400	2025	2345	4361	3 x (Ø480)	1083	2116	1410	3 x (850 x 350)	1100	2100	4105	3520
NSB33x1025	319	330	3	33	87	6400	2025	2345	4861	3 x (Ø520)	1083	2116	1390	3 x (1050 x 350)	1100	2100	4605	3920
NSB33x1030	382	330	3	33	217	6400	2025	2385	5361	3 x (Ø580)	1083	2116	1360	3 x (1250 x 350)	1100	2100	5105	4420
NSB36x1020	278	360	3	36	87	6925	2025	2345	4561	3 x (Ø480)	1170	2291	1610	3 x (900 x 350)	1187	2275	4305	3800
NSB36x1025	348	360	3	36	87	6925	2025	2345	5061	3 x (Ø550)	1170	2291	1575	3 x (1150 x 350)	1187	2275	4805	4225
NSB36x1030	417	360	3	36	217	6925	2025	2385	5561	3 x (Ø600)	1170	2291	1550	3 x (1350 x 350)	1187	2275	5305	4775
NSB44x1025	425	440	4	44	217	8500	2025	2385	4861	4 x (Ø520)	1081	2112	1390	4 x (1050 x 350)	1100	2100	4605	5325
NSB44x1030	510	440	4	44	217	8500	2025	2385	5361	4 x (Ø580)	1081	2112	1360	4 x (1250 x 350)	1100	2100	5105	5825
NSB50x1025	483	500	5	50	217	9725	2025	2385	4761	5 x (Ø500)	992	1935	1300	5 x (950 x 350)	1012	1925	4505	6185
NSB50x1030	579	500	5	50	217	9725	2025	2385	5261	5 x (Ø550)	992	1935	1275	5 x (1150 x 350)	1012	1925	5005	6760
NSB60x1025	579	600	6	60	217	11650	2025	2385	4761	6 x (Ø500)	991	1933	1300	6 x (950 x 350)	1012	1925	4505	7480
NSB60x1030	695	600	6	60	217	11650	2025	2385	5261	6 x (Ø550)	991	1933	1275	6 x (1150 x 350)	1012	1925	5005	8155



TECHNICAL SPECIFICATIONS		
Max working negative pressure	Pa	5000
Working Temperature	°C	-10<T<80
Electric control panel feeding	230 V AC 50Hz	
Bag cleaning system	pulse-jet	
Compressed air tank working pressure	bar	5