

TRIUMPH 3G

Block bottom bag machine



With the **TRIUMPH 3G**, you can integrate a **tried and tested** yet **modernised** machine for medium packaging and carrier bag sizes into your production.

The TRIUMPH 3G was developed by Windmüller & Hölscher, and, since 1998, has been under the responsibility of GARANT. Due to further development and modernisation, the TRIUMPH 3G has been integrated into the TRIUMPH range as a highly-reliable machine featuring the latest control technology.

The machine is ideal for medium-sized packaging and carrier bag formats, whether single or double-layer. This machine provides the basis for stable and reliable production.

Naturally, the TRIUMPH 3G can be equipped with various additional devices as well as an inline printer to meet customer specific needs.

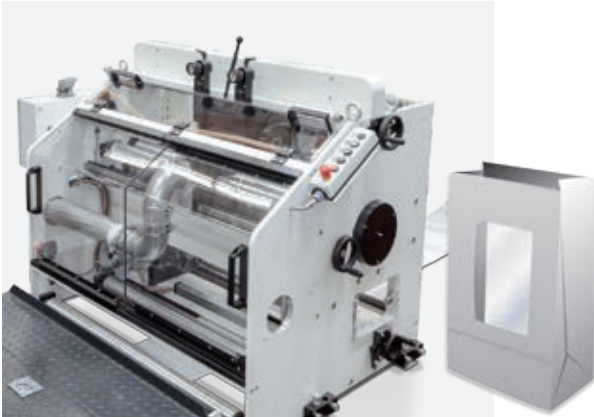
Format ranges for the TRIUMPH 3G

Bag width	5.91 – 12.60 inch	150 – 320 mm
Bottom width	2.76 – 7.87 inch	70 – 200 mm
Cut-off length	14.17 – 30.31 inch	360 – 770 mm

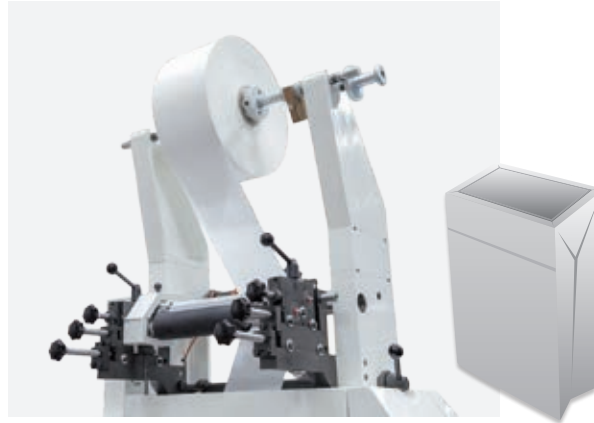


Optional additional devices

SERVO window die cut unit



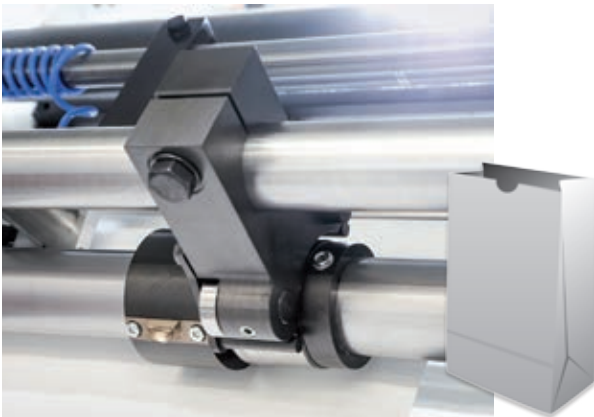
Bottom patch unit



Inline printer LINAFLIX NL



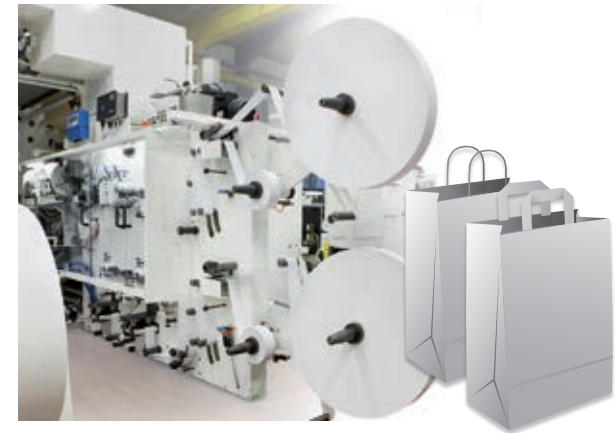
Thumb hole unit



Feeding unit/cross pasting



Flat or twisted handle unit



Format ranges for all TRIUMPH models

		TRIUMPH 2B	TRIUMPH 2-T8	TRIUMPH 3 MR	TRIUMPH 3G	TRIUMPH 5 QT	TRIUMPH 5 XB
Bag width	[mm]	70–230	80–280	105–320	150–320	180–460	320–540
Bottom width	[mm]	40–140	50–160	55–180	70–200	70–230	120–350
Cut-off length	[mm]	200–470	250–550	240–650	360–770	360–770	420–770
Roll width	[mm]	max. 770	max. 900	max. 1070	max. 1070	max. 1370	max. 1520
Roll diameter	[mm]	max. 1300	max. 1300	max. 1300	max. 1300	max. 1300	max. 1300

		TRIUMPH 2B	TRIUMPH 2-T8	TRIUMPH 3 MR	TRIUMPH 3G	TRIUMPH 5 QT	TRIUMPH 5 XB
Bag width	[inch]	2.76–9.06	3.15–11.02	4.13–12.60	5.91–12.60	7.09–18.11	12.60–21.26
Bottom width	[inch]	1.57–5.51	1.97–6.30	2.17–7.09	2.76–7.87	2,76–9.06	4.72–13.78
Cut-off length	[inch]	7.87–18.50	9.84–21.65	9.45–25.59	14.17–30.31	14.17–30.31	16.54–30.31
Roll width	[inch]	max. 30.31	max. 35.43	max. 42.13	max. 42.13	max. 53.94	max. 59.84
Roll diameter	[inch]	max. 51.18	max. 51.18	max. 51.18	max. 51.18	max. 51,18	max. 51,18