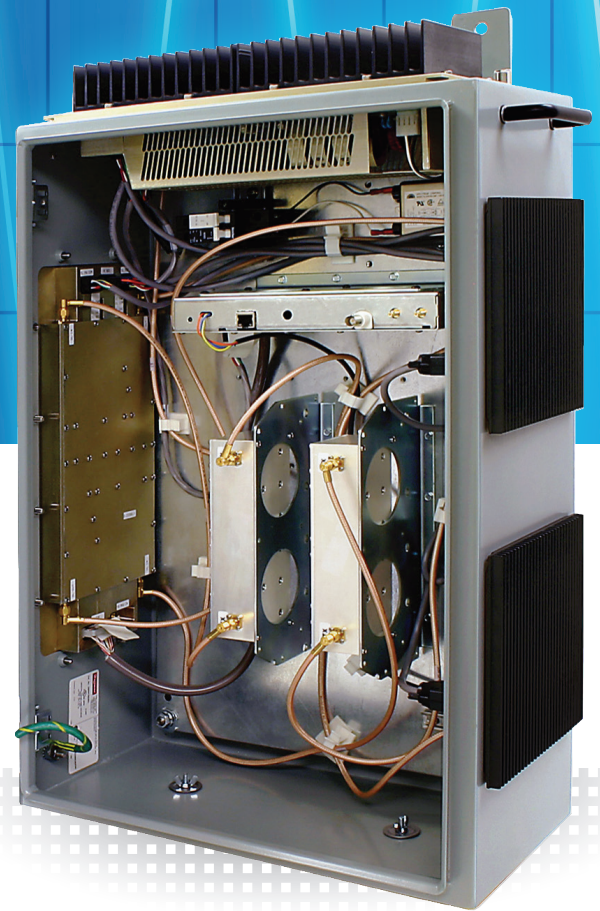


SIGNAL BOOSTER

Digital 700, 800 MHz

SBIII 613-8 SERIES



True Filter Flexibility

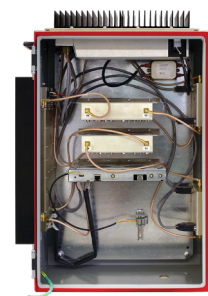
The 613-8 Series Digital Signal Booster provides Public Safety grade signal reliability and coverage in disadvantaged RF locations minimizing noise and interference. This model operates in the 700/800 MHz range with up to 14 pairs of programmable digital filters for both uplink and downlink per band. Filter center frequency and characteristics are fully programmable to meet the demands of various systems and signals. Digital filtering provides amplification of several individual channels of narrow bands frequencies-amplifying only the desired spectrum – while preventing interference to other signals.

Components are protected by a NEMA 4 style enclosure to meet the demands of the NFPA requirements.

PRODUCT FEATURES

- Precision oscillation detection and user programmable system handling based on conditions.
- Single and dual band models available.
- Intuitive web browser user interface allows for local and network access.
- Highly secure SNMP (v. 3.0) to trap and send messages to an SNMP Manager.
- Digital filtering bandwidth is user programmable from 6.25 kHz to 15 MHz.
- The built-in pilot signal offers system coverage assessment with a 1 kHz FM modulated carrier that allows simple SINAD qualification testing.
- NFPA/IFC options include all battery backup configuration options to comply with standards.
- Able to be used as a head-end booster for a system that is donored “off the air” in an RF congested area.
- Can be connected to any number of SBII+ broadband boosters.
- Custom models available.

NFPA/IFC OPTIONS



■ **NFPA Digital SB**
Painted a Public Safety red



■ **6160-110-24-NR**
■ **6160-220-24-NR**
110 or 220 Amp-hour, minimum 12 or 24 hour battery backup units

SBIII 613-8 SERIES

Specifications

SYSTEM

Filters	14 uplink filters per band 14 downlink filters per band
Frequency Range	
700 Band	764 to 776, 794 to 806 MHz
800 Band	806 to 824, 851 to 869 MHz
Filter Bandwidth	Programmable standard filters include 12.5 kHz, 12.5 kHz low delay, 25 kHz, 3 MHz, 9 MHz. Custom filters are user-configurable.
Maximum Gain	95 dB
Output Power	
High Power	34 dBm
Low Power	22 dBm
Maximum Input Level	-20 dBm
RF Input/Output Impedance	50 Ohms nominal
Power	90-250 VAC, 50/60 Hz and 24 VDC
Control & Monitoring	Intuitive web browser interface over an Ethernet connection, local individual module status LED's, SNMP Traps
Alarms	Form-C Contacts (NO or NC)

CONNECTORS

External RF Connectors	N (f)
-------------------------------	-------

PRODUCT SELECTION GUIDE

Example: 613-83B-AHH-G1A-N (Single Band) = Digital Signal Booster III, 764 to 806 MHz, 1-14 Filters, High Power Up/Downlinks, Red NEMA 4 Case, NFPA, Single Band
 Note: Not all combinations are valid. If assistance is needed consult the factory to define the model that is right for you.

613-8 - - - - - - - - - -

Product Type	Frequency Band	No. of Channels	Channel Power	NEMA 4 Enclosure	Options (blank for no options)
613-8	3B = 764 to 806 MHz (Single Band)	A = 1-14 (700 or 800 MHz) Filter (Single Band)	HH = High Power Uplink and Downlink	G1A = Painted Steel Enclosure	N = NFPA/IFC Configuration
	9A = 806 to 869 MHz (Single Band)	AA = 1-14 (700 or 800 MHz) Filter (Dual Band)	HL = High Power Uplink and Low Power Downlink	G2A = Stainless Steel Enclosure	
	3E = 764 to 869 MHz (Dual Band)		LH = Low Power Uplink and High Power Downlink		
			LL = Low Power Uplink and Downlink		H = Dual Port (Head End)
			FH = High Power Fiber Remote		R = Dual Port (Remote End)
			FL = Low Power Fiber Remote		1 - 3 MHz Preselector NPSPAC Pre-Rebanding (866 to 869 MHz)
			HF = High Power Fiber Head-end		2 - 3 MHz Preselector NPSPAC Post-Rebanding (851 to 854 MHz)
			LF = Low Power Fiber Head-end		3 - 10 MHz Preselector (851 to 861 MHz)

Please Contact Factory for non-standard configurations with custom frequency, windows and bandwidth. Frequencies MUST be provided with order.

birdrf.com/products

The **RF Experts** | USA Sales : 30303 Aurora Rd, Solon, OH 44139 | www.birdrf.com
 Phone: +1 440.248.1200 / 866.695.4569 [Toll Free] | Fax: +1 440.248.5426 / 866.546.4306 [Toll Free]

Bird is not responsible for omissions or errors. Specifications subject to change without notice.

©2022 Bird • Signal-Booster-SBIII-Digital-613-8-Series-03072022

PHYSICAL

Size	
Single Band	24 in x 16 in x 8 in
Dual Band	30 in x 20 in x 10 in
Weight	
Single Band	70 lb
Dual Band	95 lb
Enclosure	Modified NEMA 4 w/o Fans

ENVIRONMENTAL

Operating Temperature	-30 °C to 60 °C
------------------------------	-----------------

CERTIFICATIONS

FCC	EZZ6138 - Class A Type Booster Equipment Authorization under FCC Rules Part 90
Industry Canada	1940A-6138 - Canada Certification Part RSS-131

NFPA OPTIONS

6160-110-24-NR	110 Amp-hour, minimum 12 hour battery backup unit
6160-220-24-NR	220 Amp-hour, minimum 24 hour battery backup unit

