

# SPULFIX 480

## Coil and spool unwinding machine

Perfect complement  
to processing machines



Fig. 1 SPULFIX 480 with open cover

## SPULFIX 480

- Coil and spool unwinding machine

### Functionality:

This machine is used as feeding device of all kinds of winding material to processing machines, such as Kabelmat take-ups or pre-assembling systems, e.g. automatic cutting machines, dismantling or stripping devices. The winding good can optionally be understood as coil or spool material. The rotation speed of the unwinder is controlled either by an accumulator or, alternatively, by additional set value taking the requested run-up and run-down time as well as the line speed into consideration.

Technical Data	SPULFIX 480
Part No.	1823.000
Unwinding plate Ø	max. 480 mm
Loading capacity	max. 20 kg
Accumulator capacity	3 m
Numbers of accumulator wheels	5 / 6
Material Ø	max. 10 mm
Unwinding rotation speed	200 U/min
Pull force without additional weight	1,0 N
Pull force with weight (abt. 200 g)	1,5 N
Pull force with 2 weight (abt. 650 g)	1,7 N
Pull force with 3 weight (abt. 850 g)	2,0 N
L x W x H	approx. 1350 x 620 x 1860 mm
Weight	approx. 120 kg

# SPULFIX 480

## Coil and spool unwinding machine

### Basic equipment:

- Mobile basic machine as self-supporting, torsionally resistant weldment
- Holder for exchangeable dispensing plate of an outer diameter of up to 480 mm
- Mounted accumulator with a stroke of 500 mm and reverse-locked outlet roller
- Switch cabinet with operating elements
- Additional outlet dancer for decreasing the starting pull force
- Built-in potentiometer for pre-setting the line speed
- Switch-off sensor for lower and upper accumulator position
- Sensor for regulating the dispensing plate

### Additional equipment:

- SPULFIX 480 horizontal unwinding plate for spools

#### Technical Details

Spool Ø	max. 470 mm
Spool width	max. 250 mm
Plate Ø	480 mm
Core pin Ø	16 x 200 mm
Centering cone for bore Ø	25 - 80 mm
Spool weight	max. 20 kg
Colour	galvanised

- RINGFIX 480 horizontal unwinding plate for coils

#### Technical Data

Coil outer Ø	max. 470 mm
Plate Ø	480 mm
Height centering cones (3 pcs.)	250 mm
Core adjusting range	140 - 320 mm
Coil weight	max. 20 kg
Colour	galvanised

Indoor use only. Fig. may differ from original.  
Technical modifications reserved. Status 01/2020

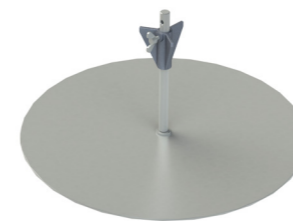


Fig. 2 SPULFIX 480 unwinding plate



Fig. 3 RINGFIX 480 unwinding plate

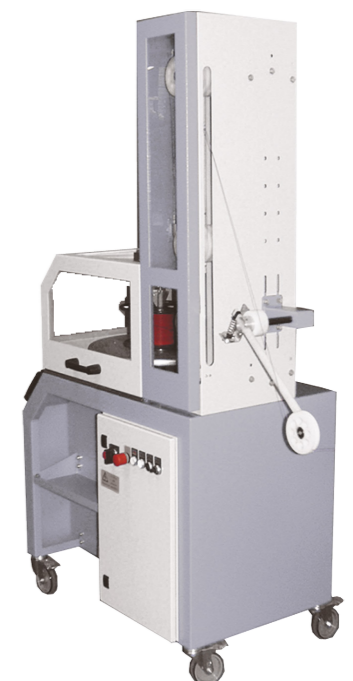


Fig. 4 SPULFIX 480 with closed cover