

MESSROL 450

Coil and spool rewinder, manual

Rewind coils and spools while simultaneously measuring



Fig. 1: MESSROL 450 complete device with RAPID 450 SP, RINGFIX 480 and MESSBOI 10

MESSROL 450

- Coil and spool rewinder for small coils and spools

Functionality:

This manual coil and spool rewinder enables to wind winding material like cables, wires etc. from coils or spools into smaller coils or onto smaller spools while at the same time the material is measured exactly.

- Flexible modular system
- Easy winding while simultaneously measuring
- Adjustable break mechanism at the base frame avoid an uncontrolled material flow
- Easy assembly and removal of the coils and spools
- Continuous and central tension of the coils



Fig. 2: MESSROL 450 with spool winding axle, MESSBOI 25 with roller cage unit and inlet roller

MESSROL 450

Coil and spool rewinder, manual

Complete device

Complete device	MESSROL 450 complete device
Part No.	86001121
consisting of:	
Frame	85100436
Mobile	85100437
RINGFIX 480	85101509
RAPID 450 SP	85100090
MESSBOI 10	85100471

Technical device

L x W x H	approx. 1000 x 400 x 1200 mm
Colour	RAL 7005 mouse grey
Weight	approx. 48 kg

Frame

Technical data	MESSROL 450 base frame / desk frame
Part No.	85100436
Axle holder-Ø	Ø 20 mm
L x W x H	approx. 1000 x 400 x 350 mm
Colour	RAL 7005 mouse grey
Weight	approx. 14,5 kg

Pillars with rollers for base frame

Technical data	MESSROL 450 mobile
Part No.	85100437
Steering rollers (4 pcs. set)	brakeable
Colour	RAL 7005 mouse grey
Material	steel
Weight (Set)	12 kg
Length	approx. 750 mm
Scope: 4 pillars with brakeable steering rollers	

Inlet roller for unwinding from cable drums

Technical data	MESSROL 450 inlet roller
Part No.	85100438
Inlet roller	Ø 50 mm
Colour	RAL 7005 mouse grey
Weight	approx. 3,4 kg



Fig. 3: MESSROL 450 complete device

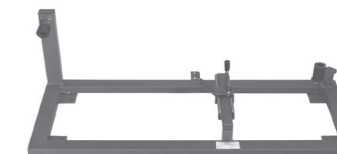


Fig. 4: MESSROL 450 base frame



Fig. 5: MESSROL 450 pillar mobile

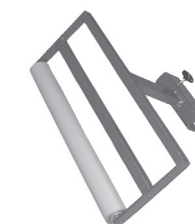


Fig. 6: MESSROL 450 inlet roller

Coiler head with hand crank

Technical data	RAPID 400 SP	RAPID 450 SP
Part No.	85100089	85100090
Coil-Ø	max. 400 mm	max. 450 mm
Winding width	max. 70 mm	max. 70 mm
Core-Ø	130 mm	250 mm
Axle holder-Ø	20 mm	20 mm
Load capacity	max. 15 kg	max. 15 kg
Colour	galvanised	galvanised
Material	steel	steel
Weight	approx. 4,0 kg	approx. 4,5 kg



Fig. 7: RAPID 400 SP

Spool winding axle with hand crank

Technical data	Spool winding axle
Part No.	86118100
Spool-Ø	max. 310 mm
Spool width	max. 220 mm
Spool bore	25 - 80 mm
Load capacity	max. 10 kg
Axle holder-Ø	20 mm
Axle	Ø 16 mm x 270 mm
Colour	RAL 7035 light grey



Fig. 8: Spool winding axle

Coil unwinding plate

Technical data	RINGFIX 480
Part No.	85101509
Coil-Ø	max. 470 mm
Plate-Ø	480 mm
Height core bolts	250 mm
Core adjusting range	140 - 320 mm
Load capacity	max. 20 kg
Colour	galvanised
Weight	approx. 15 kg



Fig. 9: RINGFIX 480

Spool unwinding plate

Technical data	SPULFIX 480
Part No.	85101516
Spool-Ø	max. 470 mm
Spool width	max. 150 mm
Plate-Ø	480 mm
Core bolt dimensions	Ø 16 x 200 mm
Centering cone for bore	25 - 80 mm
Load capacity	max. 25 kg
Colour	galvanised
Weight	approx. 5,7 kg

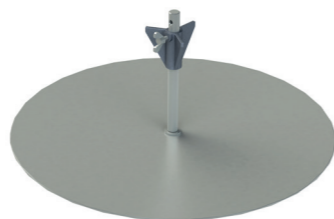


Fig. 10: SPULFIX 480

Length measuring device

Technical data	MESSBOI 10	MESSBOI 10 conformity assessed*
Part No.	85100471	86100471
Measuring range	1-15 mm	1-10 mm
L x W x H	approx. 160 x 110 x 85 mm	approx. 160 x 110 x 85 mm
Display of counter	9999,99 m	9999,99 m
Error limit	+/- 2 %	+/- 0,5 %
Measuring force	spring pressure	spring pressure
Measuring wheel	plastic	plastic
Housing	polystyrol	polystyrol
Colour	black / white	black / white
Weight	approx. 0,7 kg	approx. 0,7 kg



Fig. 11: MESSBOI 10

Technical data	MESSBOI 25	MESSBOI 25 conformity assessed*
Part No.	85101000	86101000
Measuring range	2 - 25 mm	2 - 15 mm
L x W x H	approx. 120 x 160 x 350 mm	approx. 120 x 160 x 350 mm
Display of counter	9999,99 m	9999,99 m
Error limit	+/- 0,5 %	+/- 0,5 %
Measuring wheel	aluminum with vulcanized PUR coating	aluminum with vulcanized PUR coating
Housing	aluminum	aluminum
Weight	approx. 1,4 kg	approx. 1,4 kg
Colour	RAL 7005 mouse grey	RAL 7005 mouse grey



Fig. 12: MESSBOI 25
with roller cage unit

Technical data	Inlet and outlet roller cage for MESSBOI 25
Art.-Nr.	85101001
Roller cage unit for better guidance of the winding goods. Note: In combination with MESSROL 450 the inlet and outlet roller cage unit is necessary.	

*Conformity assessment procedure according to Annex II, Module F1 of the Measuring Instruments Directive 2014/32 / EU according to accuracy class III by the German calibration authority, valid for all member states of the EU / EEA.
Note: Conformity assessment (formerly first calibration) is **only approved for useage in direct sales!**

Indoor use only. Fig. may differ from original. Technical modifications reserved. Status 01/2021