



The following page(s) are extracted from multi-page Kuhnke product catalogues or CDROMs and any page number shown is relevant to the original document. The PDF sheets here may have been combined to provide technical information about the specific product(s) you have selected.

Hard copy product catalogues, and CDROMs have been published describing Kuhnke Pneumatics, Solenoids, Relays and Electronics; some divided into different books. A list of current publications is available on this web site or from our sales offices. Some may be available for download, but as substantially larger files.

Contact Details

Kuhnke sales and service in North America

Ellis/Kuhnke Controls
132 Lewis Street
Unit A-2, Eatontown
NJ 07724
USA

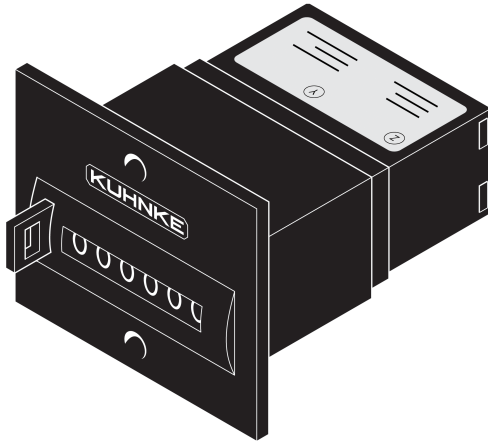
T: (800) 221 0714
T: (732) 291 3334
F: (732) 291 8154

Important Note

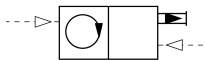
The information shown in these documents is for guidance only. No liability is accepted for any errors or omissions. The designer or user is solely responsible for the safe and proper application of the parts, assemblies or equipment described.

Panel Mounted Pneumatic Counter

50670



The pneumatic counter can be used as an event, part or lot counter. The counter registers pneumatic impulses on a 6 digit display. Totalizer operates with impulse pressure between 30 and 115 PSI. The counter can be reset either manually via a reset button, or by a pneumatic signal to a specially provided port.



Technical Specifications

Op. Pressure:

30-115 PSI

Connections:

10-32 (M5) ports

Display:

Black with white digits (6 numbers)

Reset:

Manual button on cover or pneumatic signal of 180 ms duration.

Media:

Filtered air

Control Connections:

Port Z - Counter pulse input

Port Y - Reset

Duty Cycle:

Continuous

Min. pulse duration 8 ms

Min. pause 10 ms

Operating Ambient:

0°C to + 60°C (32°F to 140°F)

Weight:

2.5 ozs.

Materials:

Molded body

Dimensions:

Face plate: 2" W x 2" H

Behind panel: 2 1/2" Deep x

2" Wide x 1" High

Panel Cut Out:

2" Wide x 11/16" High

2 mounting holes required.

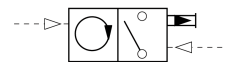
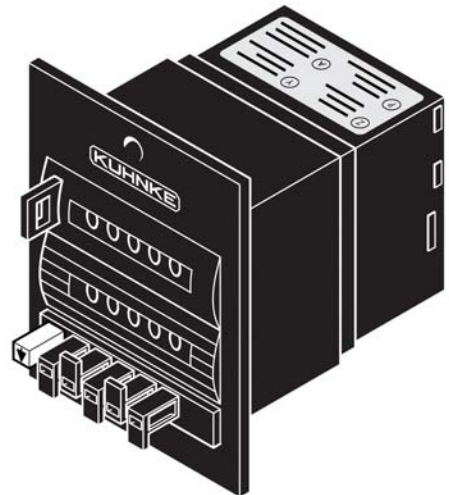
Hardware included

Panel Mounted Pneumatic Predetermining Counter

50680

Counter is used for selecting the number of desired operations on a production run. The number of operations is set on the lower scale by holding down a white button and setting the count to be reached. The upper scale is a 5 digit totalizer. When the count reaches the lower scale setting, a built-in 3 way valve is switched to provide a pneumatic output to stop machine or signal that the count has been reached. Valve remains switched until counter is reset.

The counter operates with an impulse pressure between 30-115 PSI and can be reset either manually via a reset button or by a pneumatic signal to a specially provided port.



Technical Specifications

Op. Pressure:

30-115 PSI

Connection:

10-32 (M5) ports

Display:

Black with white digits
(5 numbers)

Reset:

Manual button on cover or
pneumatic signal of
180 ms duration.

Media:

Filtered air

Control Connections:

Port Z - Counter pulse input
Port Y - Reset
Port P - Supply air to 3 way valve
Port A - Output signal from valve

Duty Cycle:

Continuous
Min. pulse duration 8 ms
Min. pause 10 ms

Operating Ambient:

0°C to +60°C (32°F to 140°F)

Weight:

4 ozs.

Materials:

Molded body

Dimensions:

Face plate: 2 3/8" W x 3" H
Behind panel: 2 1/2" Deep x
2" Wide x 2" High

Panel Cut Out:

2 1/16" Square
2 mounting holes required.
Hardware included.