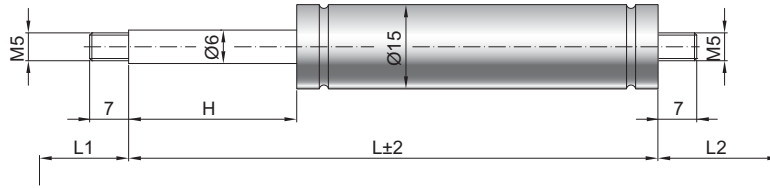


Gasdruckfeder G 06-15 V2

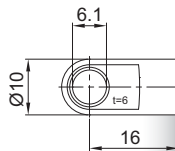
Ausschubkraft F1	40 - 400 Newton
Progression	25 %
Kolbenstange	Ø 6 mm, W. 1.4305 / AISI 303
Druckrohr	Ø 15 mm, W. 1.4301 / AISI 304
Anschlüsse	W. 1.4305 / AISI 303

GZ 07

GZ 07



AU 16



Details

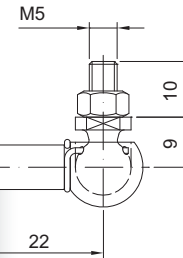
Standardhöhe H (mm)
40, 50, 60, 80, 100, 120, 150, 160, 200

Standardlänge GL
 $L = 2 \times H + 55$
 $GL = L + L1 + L2$

Standardlieferumfang
Ventil am Bodenstück

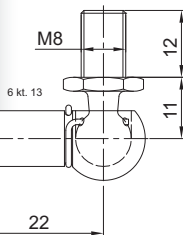
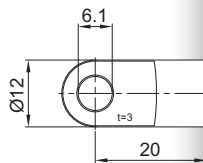
Extras
4 - Fettkammer
6 - Schutzrohr
7 - schwimmender Kolben
B3 - Dichtsystem
NT - Niedertemperaturlösung
HT - Hochtemperaturlösung
RK - Reibelement

Weitere **Anschlüsse** finden Sie hier [▶](#)
Passende **Beschläge** finden Sie hier [▶](#)



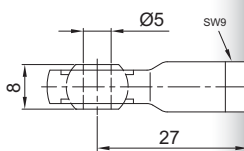
WG 22

AS 20



WX 22

AG 27



GA 20

