

WP series

Large pushbutton switch •
Threaded bushing Ø 22 mm • Momentary



DISTINCTIVE FEATURES

- Military application and harsh environments
- Easy to integrate
- Excellent front panel sealing



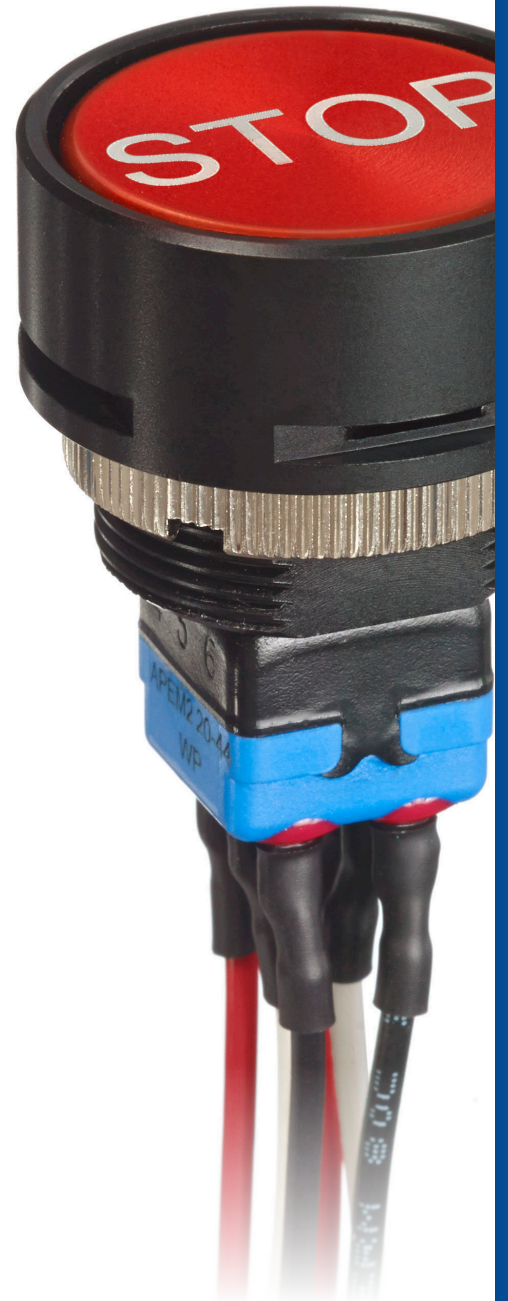
ENVIRONMENTAL SPECIFICATIONS

- Operating temperature: -40 °C to +85 °C (-40°F to +185°F)
- Front Panel sealing: IP67 and IP69K according to DIN 40050-9



ELECTRICAL SPECIFICATIONS

- Max. Voltage rating with resistive load: 28 VDC
- Max. current rating with resistive load: 4 A
- Initial contact resistance: 10 mΩ max
- Insulation resistance: 1000 MΩ min at 500 VDC
- Dielectrical strength:
 - 1000 Vrms 50 Hz min. between terminals
 - 2000 Vrms 50 Hz min between poles
 - 2000 Vrms 50 Hz min. between terminals and frame
- Contact bounce: 2 ms max
- Electrical life: Silver contacts (4 A 30 VDC): 50 000 cycles



WP series

Large pushbutton switch •
Threaded bushing Ø 22 mm • Momentary



GENERAL SPECIFICATIONS

- Torque: 1.25 Nm (.922 FT.lb) max applied to nut
- Standard panel thickness: 4 mm (.157) max
- Total travel: 2 mm (.078)

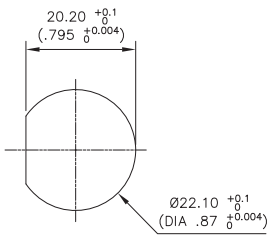


MATERIALS

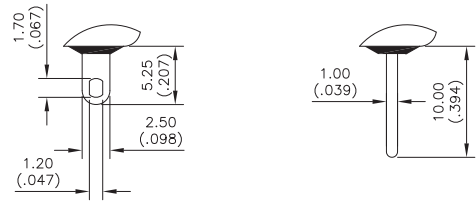
- Case: diallyphtalate (DAP)
- Actuator: Aluminium, anodized
- Contact: brass, nickel plated
- Contacts: silver
- Terminal seal: epoxy



PANEL CUT-OUT

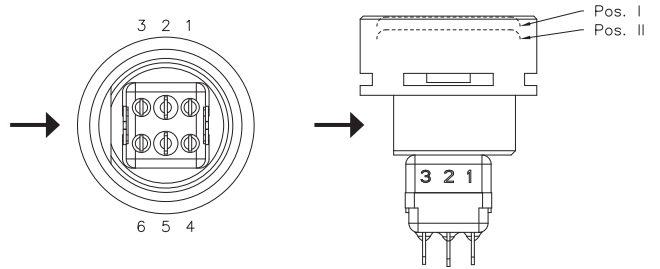


TERMINALS



ELECTRICAL FUNCTION

→ Flat



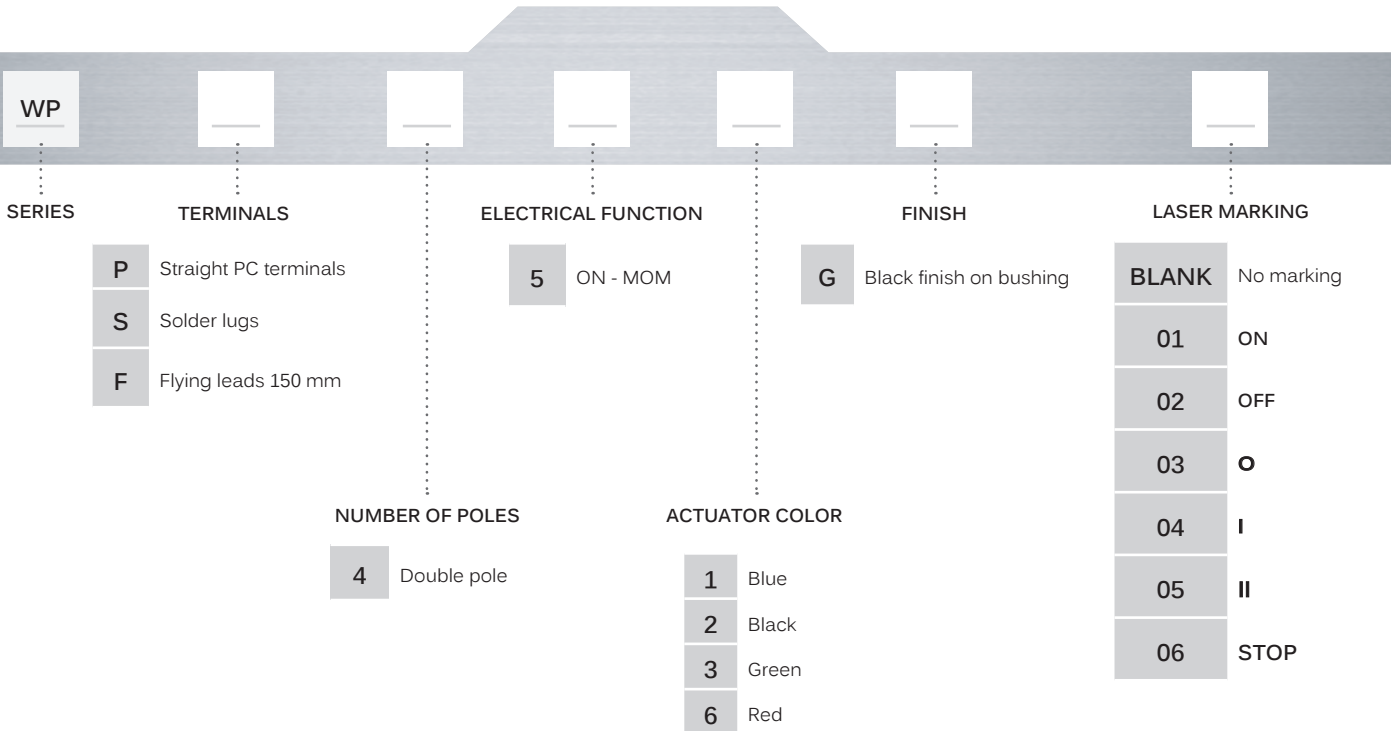
POS. I	POS. II
ON	MOM
1-3 4-6	1-2 4-5

WP series

Large pushbutton switch •
Threaded bushing Ø 22 mm • Momentary



BUILD YOUR PART NUMBER



ABOUT THIS SERIES

On the following pages, you will find successively basic part numbers of switches and options in the same order as in above chart.



Notice: please note that not all combinations of above numbers are available. Refer to the following pages for further information.



Mounting accessories: Standard hardware supplied: 1 knurled nut 25 mm and 1 O-Ring

WP series

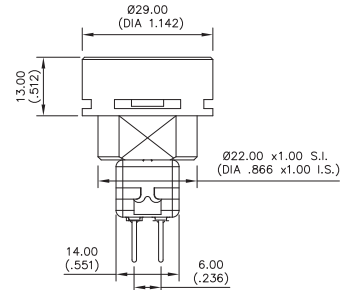
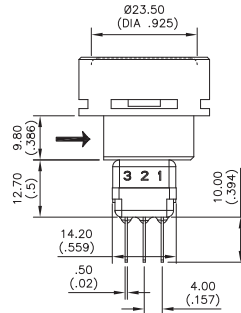
Large pushbutton switch • Threaded bushing Ø 22 mm • Momentary

STRAIGHT PC TERMINALS



WPP45

→ Flat

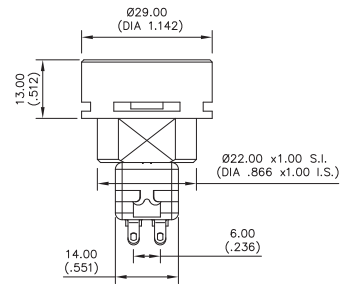
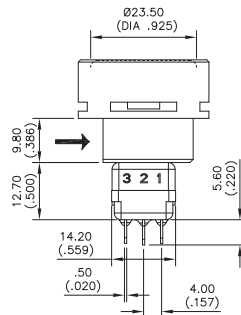


SOLDER LUGS TERMINALS



WPS45

→ Flat



FLYING LEADS TERMINALS



WPF45

→ Flat

