

SPECIAL COVERS

- Anti Corrosion treatment
No retention areas
Stainless steel nuts and protective screws as an option
- Adapted to aggressive cleaning agents, easy to clean and flexible configuration

QUALITY / RELIABILITY

- Based on 453 technology, ISO 1552 compliant specifically designed for "Food Industry Applications"
- Robust, reliable and long lasting

SPECIAL GREASE

- According to food & pharmaceutical process industry specifications



VERSIONS TO ATEX



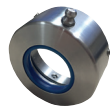
SPECIAL TUBE PROFILE

- Square shaped with rounded edges, no retention areas and light design with a "rail" for magnetic detector
- Easy to clean
- Laser marked tube as an option



ROD SEALS CONFIGURATION

- Rod Seals in special PUR, FPM, or FPM + PTFE
- External cartridge option with greaser for rod seal protection



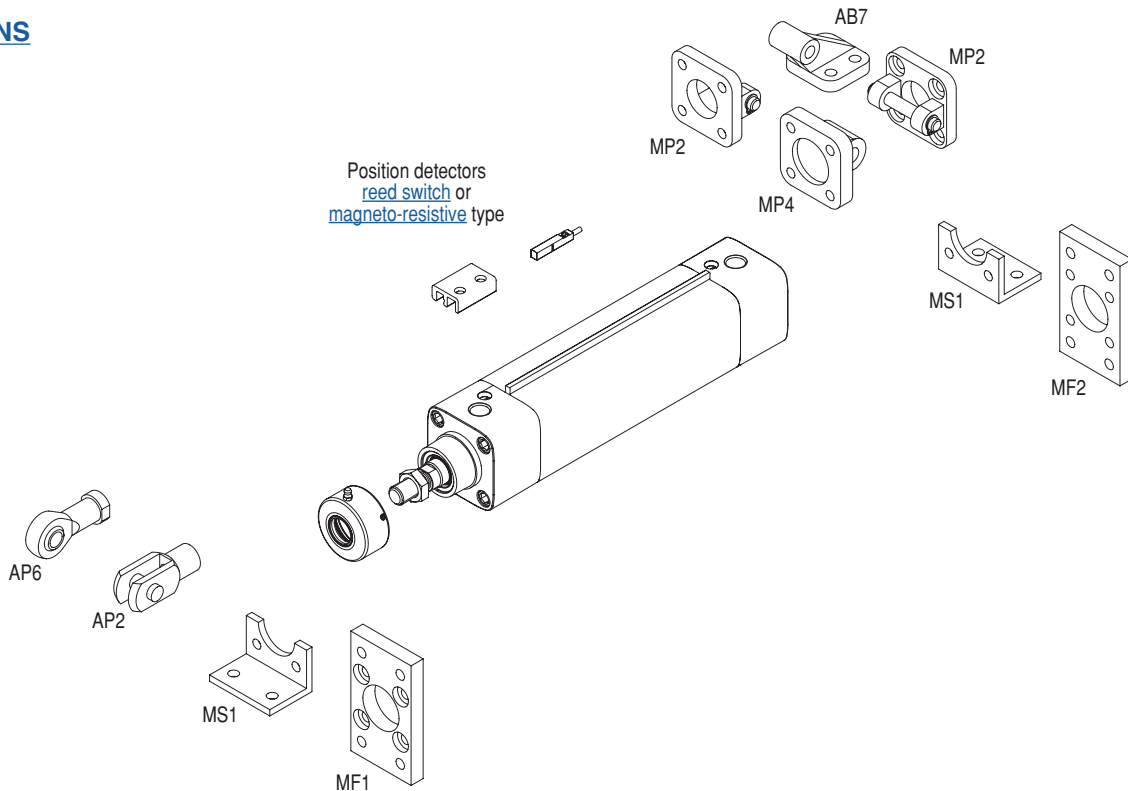
MAGNETIC DETECTION

- "Rail" to adapt magnetic detectors (e.g. [IP69K version](#))
- Reed-switch type or magneto-resistive type (MR)



OPTIONS

ANTICORROSION MOUNTINGS



Position detectors
[reed switch](#) or
[magneto-resistive](#) type

MOUNTINGS

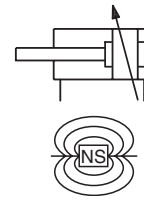
Mountings must be ordered separately
Consult our range of mountings with anticorrosion treatment or in stainless steel

POSITION DETECTORS

Magnetic position detectors must be ordered separately



01429GB-2016/R02
Availability, design and specifications are subject to change without notice. All rights reserved.



GENERAL

Detection	Equipped for magnetic position detectors
Fluid	Air or inert gas, filtered, lubricated or not
Operating pressure	10 bar, max. [1 bar = 100 kPa]
Ambient temperature	-20°C to +70°C
Optimal max. speed	≤ 1 m/s (for optimal service life)
Max. speed rate	2 m/s
Standards	ISO 15552



CONSTRUCTION

Barrel	Hard anodized aluminium alloy Positive groove for adapting a magnetic sensor	
Front and rear ends	Aluminium alloy with anti-corrosion treatment	
Bearing	Self-lubricating metal	
Cushioning seals	PUR (polyurethane)	
Cushioning	Pneumatic, adjustable from both sides with captive screw	
Rod	Stainless steel, AISI 316L stainless steel, hard chromed	
Rod nut	Stainless steel	
Piston	Ø 32 to 80 mm	POM (polyacetal)
	Ø 100 mm	light alloy
	fitted with an annular permanent magnet	
Piston seals	PUR (polyurethane)	
Grease	Grease for food & pharmaceutical applications, ISO 21469 FDA 21 CFR § 178.3570	

HOW TO ORDER

15-DIGIT PRODUCT CODE

G 454 A - 3 A - - - - A00

Thread connection
G = ISO 16030

Product series
454

Revision letter
A = Initial release

Diameter (mm)
3 = 32
4 = 40
5 = 50
6 = 63
8 = 80
1 = 100

Rod options 1
3 = Stainless steel single rod

4 = Stainless steel through rod

6 = AISI 316L stainless steel single rod

7 = AISI 316L stainless steel through rod

S = Hard chromed single rod
2 = Hard chromed through rod

All cylinders delivered with rod nut, in stainless steel for options 3, 4, 6 and 7.

Options

- A00** = Without Option
- SCN** = Stainless steel cover nuts
- AT1** = ATEX zones 1/21
- AT2** = ATEX zones 2/22
- LSR** = Laser marked Logo & Code
- LSS** = Option Combination LSR + SCN

Recommended standard strokes (mm) ⁽¹⁾

Ø mm	connect. Ø (G)	25	50	80	100	125	160	200	250	320	400	500	630	700	800	900	1000	1500	max. stroke	
32	G1/8	●	●	●	●	●	●	●	●	●	●	●	●	●	●	●	●	●	●	2000
40	G1/4	●	●	●	●	●	●	●	●	●	●	●	●	●	●	●	●	●	●	2000
50	G1/4	●	●	●	●	●	●	●	●	●	●	●	●	●	●	●	●	●	●	2000
63	G3/8	●	●	●	●	●	●	●	●	●	●	●	●	●	●	●	●	●	●	2000
80	G3/8	●	●	●	●	●	●	●	●	●	●	●	●	●	●	●	●	●	●	2000
100	G1/2	●	●	●	●	●	●	●	●	●	●	●	●	●	●	●	●	●	●	2000

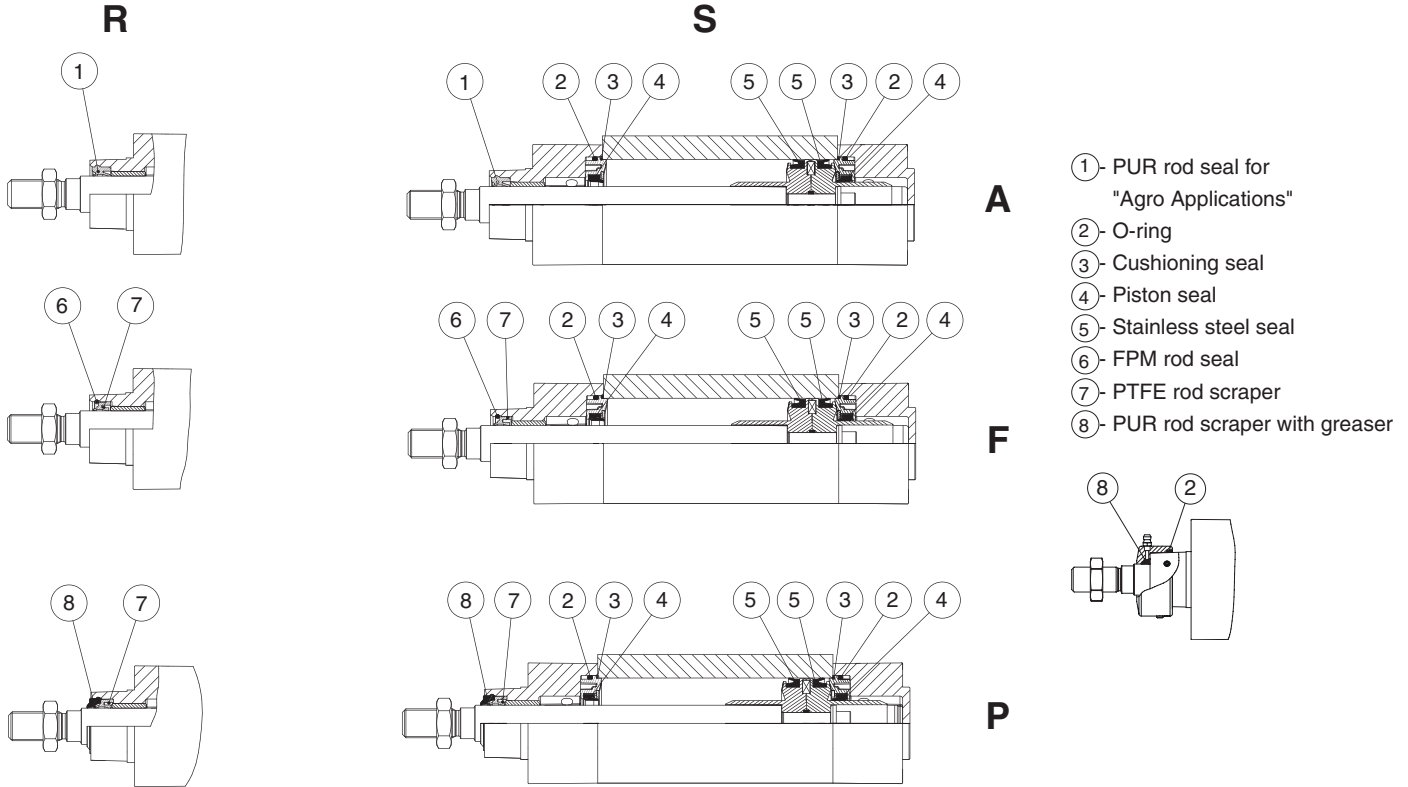
Strokes range available up to "max. stroke" column on the right.
Please note strokes marked in grey exceed the maximum recommended.
⁽¹⁾ Other strokes on request. / Min. stroke: 5 mm

Rod seal options

- A** = PUR rod seal for "Agro Applications"
 - F** = FPM Rod seal
 - P** = FPM Rod seal + PTFE rod scraper
 - D** = Protective cartridge with greaser for rod seal protection + "AGRO" PUR rod seal, only available in Ø 80 and Ø 100 mm
- Note: Cylinders with option "D" are delivered with 15 mm rod overlength.

[Configurator - CAD Files](#)

SPARE PARTS KITS CODE



- ①- PUR rod seal for "Agro Applications"
- ②- O-ring
- ③- Cushioning seal
- ④- Piston seal
- ⑤- Stainless steel seal
- ⑥- FPM rod seal
- ⑦- PTFE rod scraper
- ⑧- PUR rod scraper with greaser

15-DIGIT PRODUCT CODE

M 454 A - S A 0000 A00

Spare Parts digit
M

Product series
454

Revision letter
A = Initial release

Diameter (mm)
3 = 32
4 = 40
5 = 50
6 = 63
8 = 80
1 = 100

Rod seal and rod scraper seal
A = PUR rod seal for "Agro Applications"
F = FPM Rod Seal
P = FPM Rod Seal+ PTFE Rod Scraper seal
D = Protective cartridge with greaser for rod seal protection + "AGRO" PUR rod seal

Type of kit
S = Complete set of seals
R = Rod seals only

ACCESSORIES

- Special adaptor for magnetic detector (code : **P494A0029100A00**)
Magnetic position detectors must be ordered separately

- Set of 4 stainless steel protection screws to cover the cylinder mounting holes:

Ø (mm)	code
32-40	P4994395723N001
50-63	P4994395735N001
80-100	P4994395748N001

- External cartridge with greaser for rod seal:

Ø (mm)	code
80	P4994378238N001
100	P4994378241N001
125 (Series 450)	P499502668PN001
160 (Series 450)	P499516338QN001
200 (Series 450)	P499516339RN001



01429GB-2017/R01 Availability, design and specifications are subject to change without notice. All rights reserved.

DIMENSIONS (mm), WEIGHT (kg)

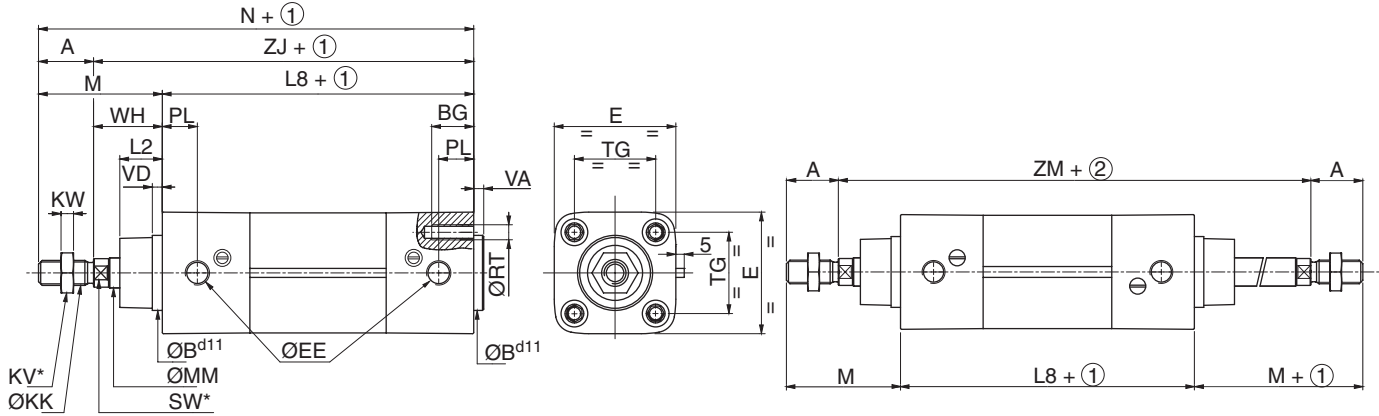
[Configurator - CAD Files](#)



SINGLE-ROD TYPE CYLINDER
Bare cylinder
ISO 1552



THROUGH-ROD TYPE CYLINDER
Bare cylinder
ISO 1552



- ① Stroke
- ② Stroke x 2
- * Width across flats

Ø (mm)	A	ØB ^{d11}	BG	E	ØEE (3)	ØKK	KV	KW	L2	L8	M	ØMM	N	PL	ØRT	SW	TG	VA	VD min.	WH	ZJ	ZM	weight	
																							(4)	(5)
32	22	30	16	48	G1/8	M10x1,25	16	5	17	94	48	12	142	14	M6	10	32,5 ±0,5	4	4	26	120	146	0,49	0,0029
40	24	35	16	54	G1/4	M12x1,25	18	6	19	105	54	16	159	16	M6	13	38 ±0,5	4	4	30	135	165	0,78	0,0037
50	32	40	16	66	G1/4	M16x1,5	24	8	24	106	69	20	175	18,5	M8	17	46,5 ±0,5	4	4	37	143	180	1,00	0,0053
63	32	45	16	78	G3/8	M16x1,5	24	8	24	121	69	20	190	19	M8	17	56,5 ±0,5	4	4	37	158	195	1,35	0,0057
80	40	45	17	96	G3/8	M20x1,5	30	10	33	128	86	25	214	16,5	M10	22	72 ±0,5	4	4	46	174	220	2,36	0,0086
100	40	55	17	115	G1/2	M20x1,5	30	10	35,5	138	91	25	229	19,5	M10	22	89 ±0,5	4	4	51	189	240	3,46	0,0099

(3) Thread connections G have standard thread according to ISO 16030.
 (4) Cylinder weight at 0 mm stroke.
 (5) Weight to be added per additional mm length.