



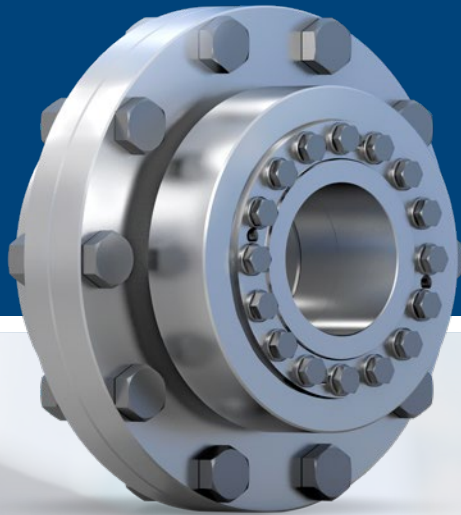
**STÜWE<sup>®</sup>**

**Catalogue**  
Flange Coupling TYPE FKH,  
FKHA & FKHYD



Certified in accordance with  
DIN ISO 9001:2008

# STÜWE<sup>®</sup>



**FLANGE COUPLING**  
TYPE FKH, FKHA,  
FKHYD





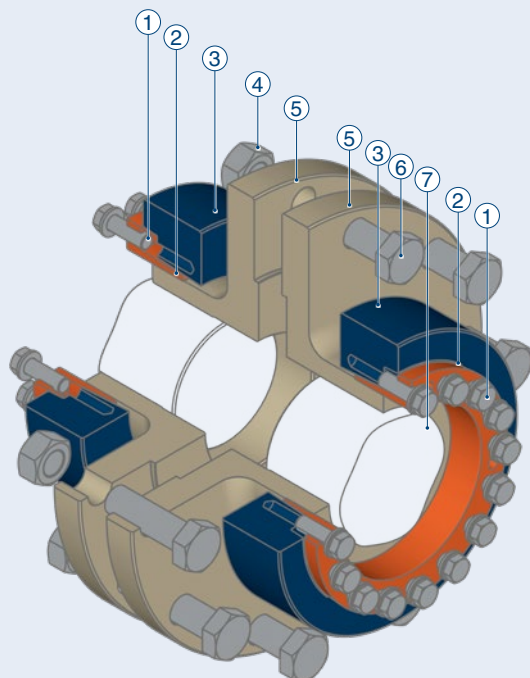
# FLANGE COUPLINGS TYPE FKH, FKHA, FKHYD – GENERAL INFORMATION

## Description of Application

Flange coupling Type FKH and FKHA consists of two halves or a single half-piece and is used to connect shafts with each other through a flange. Flange coupling Type FKHYD is a flange coupling half which is hydraulically tensioned. Through this tensioning method installation time, and thus costs, are reduced.

## Areas of Application

| Type  | Shaft diameter | Transmissible torque | Feature  |
|-------|----------------|----------------------|--|
| FKH   | 70 - 350 mm    | 6 - 911 kNm          | Complete flange coupling                                       |
| FKHA  | 95 - 320 mm    | 17 - 853 kNm         | Half flange coupling   |
| FKHYD | 120 - 440 mm   | 40 - 2300 kNm        | Transmission of the highest possible torques hydraulic version |

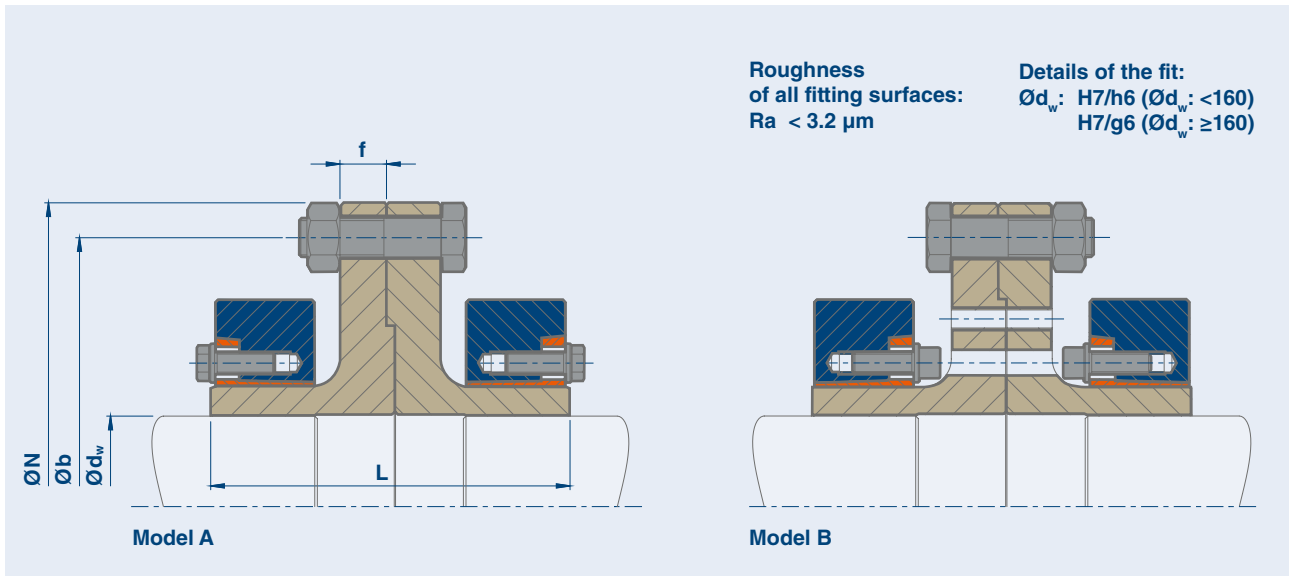


- ① Tightening bolts\*  
including washers where necessary\*
- ② Inner ring\*
- ③ Outer ring\*
- ④ Hexagonal nut\*\*
- ⑤ Flange\*
- ⑥ Flange bolt\*\*
- ⑦ Shaft

\*Included in the scope of delivery

\*\*Only included in the scope of delivery of Type FKH

# STÜWE® Flange Coupling Type FKH



## Code

- $M_t$  Maximum transmissible torque of a flange coupling with  $P_{ax} = 0$   
 $M_a$  Required tightening torque of the tightening bolts (see also "Installation and Removal Instructions")  
 $M_{aFL}$  Tightening torque of the flange bolts

## Flange Coupling Type FKH

| Type          | $d_w^{**}$<br>mm | $M_t$<br>kNm | Shrink Disc  | $M_a$<br>Nm | B <sup>***</sup> | N<br>mm | b<br>mm | L<br>mm | f<br>mm | Flange bolts* | $M_{aFL}$<br>Nm | kg  |
|---------------|------------------|--------------|--------------|-------------|------------------|---------|---------|---------|---------|---------------|-----------------|-----|
| FKH 240 - 80  | 70               | 6            | HSD 100 - 22 | 58          | M10              | 240     | 206     | 136     | 18      | 6 x M16       | 210             | 27  |
|               | 75               | 7            |              |             |                  |         |         |         |         |               |                 |     |
|               | 84               | 10           |              |             |                  |         |         |         |         |               |                 |     |
| FKH 300 - 90  | 85               | 12           | HSD 125 - 22 | 100         | M12              | 300     | 260     | 160     | 20      | 6 x M20       | 420             | 47  |
|               | 95               | 16           |              |             |                  |         |         |         |         |               |                 |     |
|               | 100              | 19           |              |             |                  |         |         |         |         |               |                 |     |
| FKH 340 - 100 | 95               | 17           | HSD 140 - 22 | 160         | M14              | 340     | 280     | 190     | 24      | 5 x M24       | 720             | 61  |
|               | 100              | 20           |              |             |                  |         |         |         |         |               |                 |     |
|               | 115              | 28           |              |             |                  |         |         |         |         |               |                 |     |
| FKH 370 - 110 | 115              | 30           | HSD 155 - 22 | 160         | M14              | 370     | 310     | 210     | 24      | 8 x M24       | 720             | 78  |
|               | 120              | 33           |              |             |                  |         |         |         |         |               |                 |     |
|               | 125              | 36           |              |             |                  |         |         |         |         |               |                 |     |
| FKH 400 - 120 | 120              | 37           | HSD 165 - 22 | 240         | M16              | 400     | 350     | 228     | 28      | 8 x M24       | 720             | 110 |
|               | 125              | 41           |              |             |                  |         |         |         |         |               |                 |     |
|               | 135              | 50           |              |             |                  |         |         |         |         |               |                 |     |
| FKH 400 - 130 | 130              | 45           | HSD 175 - 22 | 240         | M16              | 400     | 350     | 228     | 28      | 8 x M24       | 720             | 112 |
|               | 135              | 49           |              |             |                  |         |         |         |         |               |                 |     |
|               | 145              | 58           |              |             |                  |         |         |         |         |               |                 |     |
| FKH 470 - 140 | 140              | 64           | HSD 185 - 22 | 240         | M16              | 470     | 416     | 278     | 36      | 10 x M30      | 1450            | 173 |
|               | 145              | 70           |              |             |                  |         |         |         |         |               |                 |     |
|               | 150              | 76           |              |             |                  |         |         |         |         |               |                 |     |
| FKH 470 - 150 | 150              | 80           | HSD 200 - 22 | 240         | M16              | 470     | 416     | 278     | 36      | 10 x M30      | 1450            | 182 |
|               | 155              | 87           |              |             |                  |         |         |         |         |               |                 |     |
|               | 160              | 93           |              |             |                  |         |         |         |         |               |                 |     |

\*Grade 10.9 \*\*Diameter  $d_w$  can be chosen within given limitations.

\*\*\*Tightening bolts for Model A: DIN EN ISO 4014/4017 Grade 10.9, Model B: DIN EN ISO 4762 Grade 10.9

**When ordering please state:** (Type x  $\text{Ø}d_w$  x model), e.g. FKH 340 - 100 x 100 x B

## Flange Coupling Type FKH

| Type          | d <sub>w</sub> **<br>mm | M <sub>t</sub><br>kNm | Shrink Disc  | M <sub>a</sub><br>Nm | B*** | N<br>mm | b<br>mm | L<br>mm | f<br>mm | Flange bolts* | M <sub>a FL</sub><br>Nm | kg   |
|---------------|-------------------------|-----------------------|--------------|----------------------|------|---------|---------|---------|---------|---------------|-------------------------|------|
| FKH 520 - 160 | 160                     | 103                   | HSD 220 - 22 | 470                  | M20  | 520     | 456     | 300     | 36      | 12 x M30      | 1450                    | 245  |
|               | 165                     | 112                   |              |                      |      |         |         |         |         |               |                         |      |
|               | 170                     | 119                   |              |                      |      |         |         |         |         |               |                         |      |
| FKH 560 - 180 | 170                     | 122                   | HSD 240 - 22 | 470                  | M20  | 560     | 496     | 322     | 36      | 16x M30       | 1450                    | 302  |
|               | 180                     | 140                   |              |                      |      |         |         |         |         |               |                         |      |
|               | 190                     | 159                   |              |                      |      |         |         |         |         |               |                         |      |
| FKH 560 - 200 | 190                     | 163                   | HSD 260 - 22 | 470                  | M20  | 560     | 496     | 350     | 36      | 16 x M30      | 1450                    | 334  |
|               | 200                     | 184                   |              |                      |      |         |         |         |         |               |                         |      |
|               | 210                     | 207                   |              |                      |      |         |         |         |         |               |                         |      |
| FKH 590 - 220 | 210                     | 215                   | HSD 280 - 22 | 470                  | M20  | 590     | 526     | 392     | 40      | 18 x M30      | 1450                    | 420  |
|               | 220                     | 240                   |              |                      |      |         |         |         |         |               |                         |      |
|               | 230                     | 267                   |              |                      |      |         |         |         |         |               |                         |      |
| FKH 630 - 240 | 220                     | 271                   | HSD 300 - 22 | 820                  | M24  | 630     | 570     | 408     | 40      | 18 x M30      | 1450                    | 494  |
|               | 230                     | 300                   |              |                      |      |         |         |         |         |               |                         |      |
|               | 240                     | 331                   |              |                      |      |         |         |         |         |               |                         |      |
| FKH 630 - 250 | 240                     | 301                   | HSD 320 - 22 | 820                  | M24  | 630     | 570     | 408     | 40      | 18 x M30      | 1450                    | 534  |
|               | 250                     | 332                   |              |                      |      |         |         |         |         |               |                         |      |
|               | 260                     | 364                   |              |                      |      |         |         |         |         |               |                         |      |
| FKH 710 - 260 | 250                     | 390                   | HSD 340 - 22 | 820                  | M24  | 710     | 656     | 450     | 40      | 24 x M30      | 1450                    | 717  |
|               | 260                     | 427                   |              |                      |      |         |         |         |         |               |                         |      |
|               | 270                     | 466                   |              |                      |      |         |         |         |         |               |                         |      |
| FKH 710 - 280 | 270                     | 496                   | HSD 360 - 22 | 820                  | M24  | 710     | 656     | 450     | 40      | 24 x M30      | 1450                    | 754  |
|               | 280                     | 539                   |              |                      |      |         |         |         |         |               |                         |      |
|               | 290                     | 584                   |              |                      |      |         |         |         |         |               |                         |      |
| FKH 800 - 300 | 290                     | 640                   | HSD 390 - 22 | 1210                 | M27  | 800     | 736     | 500     | 50      | 28 x M30      | 1450                    | 1006 |
|               | 300                     | 691                   |              |                      |      |         |         |         |         |               |                         |      |
|               | 320                     | 800                   |              |                      |      |         |         |         |         |               |                         |      |
| FKH 800 - 330 | 320                     | 742                   | HSD 420 - 22 | 1210                 | M27  | 800     | 736     | 540     | 50      | 28 x M30      | 1450                    | 1158 |
|               | 330                     | 797                   |              |                      |      |         |         |         |         |               |                         |      |
|               | 350                     | 911                   |              |                      |      |         |         |         |         |               |                         |      |

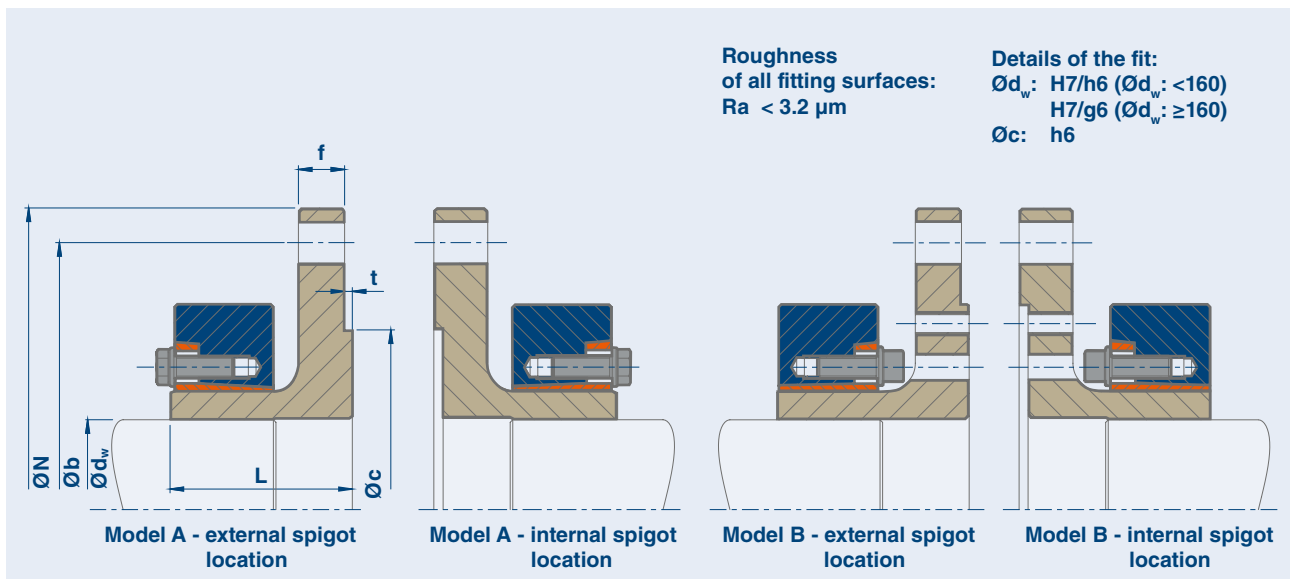
Further sizes on request. Subject to technical change without notice.

\*Grade 10.9 \*\*Diameter d<sub>w</sub> can be chosen within given limitations.

\*\*\*Tightening bolts for Model A: DIN EN ISO 4014/4017 Grade 10.9, Model B: DIN EN ISO 4762 Grade 10.9

**When ordering please state:** (Type x Ød<sub>w</sub> x Model), e.g. FKH 630 - 250 x 240 x A

# STÜWE® Flange Coupling Type FKHA



## Code

- $M_t$  Maximum transmissible torque of a flange coupling with  $P_{ax} = 0$
- $M_a$  Required tightening torque of the tightening bolts (see also "Installation and Removal Instructions")
- $M_{aFL}$  Tightening torque of the flange bolts

Dimensions N, b, c, t plus quantity and size of flange bolts depend on the counter-flange and can be changed if necessary. Please give the desired dimensions where these differ from the values in the chart.

## Flange Coupling FKHA

| Type           | d <sub>w</sub> **<br>mm | M <sub>t</sub><br>kNm | Shrink Disc  | M <sub>a</sub><br>Nm | B*** | N<br>mm | b<br>mm | c<br>mm | L<br>mm | f<br>mm | t<br>mm | Flange bolts* | M <sub>aFL</sub><br>Nm | kg |
|----------------|-------------------------|-----------------------|--------------|----------------------|------|---------|---------|---------|---------|---------|---------|---------------|------------------------|----|
| FKHA 340 - 100 | 95                      | 17                    | HSD 140 - 22 | 160                  | M14  | 340     | 280     | 200     | 98      | 24      | 6       | 5 x M24       | 720                    | 28 |
|                | 100                     | 19                    |              |                      |      |         |         |         |         |         |         |               |                        |    |
|                | 110                     | 24                    |              |                      |      |         |         |         |         |         |         |               |                        |    |
| FKHA 370 - 120 | 115                     | 30                    | HSD 155 - 22 | 160                  | M14  | 370     | 310     | 220     | 114     | 30      | 6       | 8 x M24       | 720                    | 40 |
|                | 120                     | 33                    |              |                      |      |         |         |         |         |         |         |               |                        |    |
|                | 125                     | 36                    |              |                      |      |         |         |         |         |         |         |               |                        |    |
| FKHA 400 - 120 | 120                     | 37                    | HSD 165 - 22 | 240                  | M16  | 400     | 350     | 250     | 114     | 30      | 6       | 8 x M24       | 720                    | 50 |
|                | 125                     | 41                    |              |                      |      |         |         |         |         |         |         |               |                        |    |
|                | 130                     | 45                    |              |                      |      |         |         |         |         |         |         |               |                        |    |
| FKHA 400 - 130 | 130                     | 45                    | HSD 175 - 22 | 240                  | M16  | 400     | 350     | 250     | 114     | 30      | 6       | 8 x M24       | 720                    | 51 |
|                | 135                     | 49                    |              |                      |      |         |         |         |         |         |         |               |                        |    |
|                | 140                     | 58                    |              |                      |      |         |         |         |         |         |         |               |                        |    |
| FKHA 470 - 140 | 140                     | 64                    | HSD 185 - 22 | 240                  | M16  | 470     | 416     | 280     | 139     | 36      | 6       | 10 x M30      | 1450                   | 80 |
|                | 145                     | 70                    |              |                      |      |         |         |         |         |         |         |               |                        |    |
|                | 150                     | 76                    |              |                      |      |         |         |         |         |         |         |               |                        |    |
| FKHA 470 - 150 | 150                     | 80                    | HSD 200 - 22 | 240                  | M16  | 470     | 416     | 280     | 139     | 36      | 6       | 10 x M30      | 1450                   | 84 |
|                | 155                     | 87                    |              |                      |      |         |         |         |         |         |         |               |                        |    |
|                | 160                     | 93                    |              |                      |      |         |         |         |         |         |         |               |                        |    |

\*Grade 10.9 \*\*Diameter d<sub>w</sub> can be chosen within given limitations.

\*\*\*Tightening bolts for Model A: DIN EN ISO 4014/4017 Grade 10.9, Model B: DIN EN ISO 4762 Grade 10.9

**When ordering please state:** (Type x Ød<sub>w</sub> x model), e.g. FKHA 400 - 130 x 135 x B, where necessary dimensions N, b, c, t, number & size of the flange bolts

## Flange Coupling Type FKHA

| Type           | d <sub>w</sub> **<br>mm | M <sub>t</sub><br>kNm | Shrink Disc  | M <sub>a</sub><br>Nm | B*** | N<br>mm | b<br>mm | c<br>mm | L<br>mm | f<br>mm | t<br>mm | Flange<br>bolts* | M <sub>a</sub> FL<br>Nm | kg  |
|----------------|-------------------------|-----------------------|--------------|----------------------|------|---------|---------|---------|---------|---------|---------|------------------|-------------------------|-----|
| FKHA 520 - 160 | 160                     | 103                   | HSD 220 - 22 | 470                  | M20  | 520     | 456     | 320     | 154     | 36      | 8       | 12 x M30         | 1450                    | 112 |
|                | 165                     | 112                   |              |                      |      |         |         |         |         |         |         |                  |                         |     |
|                | 170                     | 119                   |              |                      |      |         |         |         |         |         |         |                  |                         |     |
| FKHA 560 - 180 | 170                     | 122                   | HSD 240 - 22 | 470                  | M20  | 560     | 496     | 360     | 161     | 36      | 8       | 16 x M30         | 1450                    | 137 |
|                | 180                     | 140                   |              |                      |      |         |         |         |         |         |         |                  |                         |     |
|                | 190                     | 159                   |              |                      |      |         |         |         |         |         |         |                  |                         |     |
| FKHA 560 - 200 | 190                     | 163                   | HSD 260 - 22 | 470                  | M20  | 560     | 496     | 360     | 179     | 36      | 8       | 16 x M30         | 1450                    | 152 |
|                | 200                     | 184                   |              |                      |      |         |         |         |         |         |         |                  |                         |     |
|                | 210                     | 207                   |              |                      |      |         |         |         |         |         |         |                  |                         |     |
| FKHA 590 - 220 | 210                     | 215                   | HSD 280 - 22 | 470                  | M20  | 590     | 526     | 380     | 200     | 40      | 8       | 18 x M30         | 1450                    | 184 |
|                | 220                     | 240                   |              |                      |      |         |         |         |         |         |         |                  |                         |     |
|                | 230                     | 267                   |              |                      |      |         |         |         |         |         |         |                  |                         |     |
| FKHA 630 - 250 | 230                     | 272                   | HSD 320 - 22 | 820                  | M24  | 630     | 570     | 430     | 204     | 40      | 8       | 18 x M30         | 1450                    | 239 |
|                | 250                     | 332                   |              |                      |      |         |         |         |         |         |         |                  |                         |     |
|                | 260                     | 364                   |              |                      |      |         |         |         |         |         |         |                  |                         |     |
| FKHA 710 - 280 | 260                     | 455                   | HSD 360 - 22 | 820                  | M24  | 710     | 656     | 480     | 229     | 40      | 8       | 24 x M30         | 1450                    | 338 |
|                | 280                     | 539                   |              |                      |      |         |         |         |         |         |         |                  |                         |     |
|                | 290                     | 584                   |              |                      |      |         |         |         |         |         |         |                  |                         |     |
| FKHA 800 - 300 | 290                     | 640                   | HSD 390 - 22 | 1210                 | M27  | 800     | 736     | 520     | 250     | 50      | 8       | 28 x M30         | 1450                    | 451 |
|                | 300                     | 691                   |              |                      |      |         |         |         |         |         |         |                  |                         |     |
|                | 320                     | 800                   |              |                      |      |         |         |         |         |         |         |                  |                         |     |
| FKHA 800 - 330 | 320                     | 742                   | HSD 420 - 22 | 1210                 | M27  | 800     | 736     | 550     | 270     | 50      | 8       | 28 x M30         | 1450                    | 513 |
|                | 330                     | 797                   |              |                      |      |         |         |         |         |         |         |                  |                         |     |
|                | 340                     | 853                   |              |                      |      |         |         |         |         |         |         |                  |                         |     |

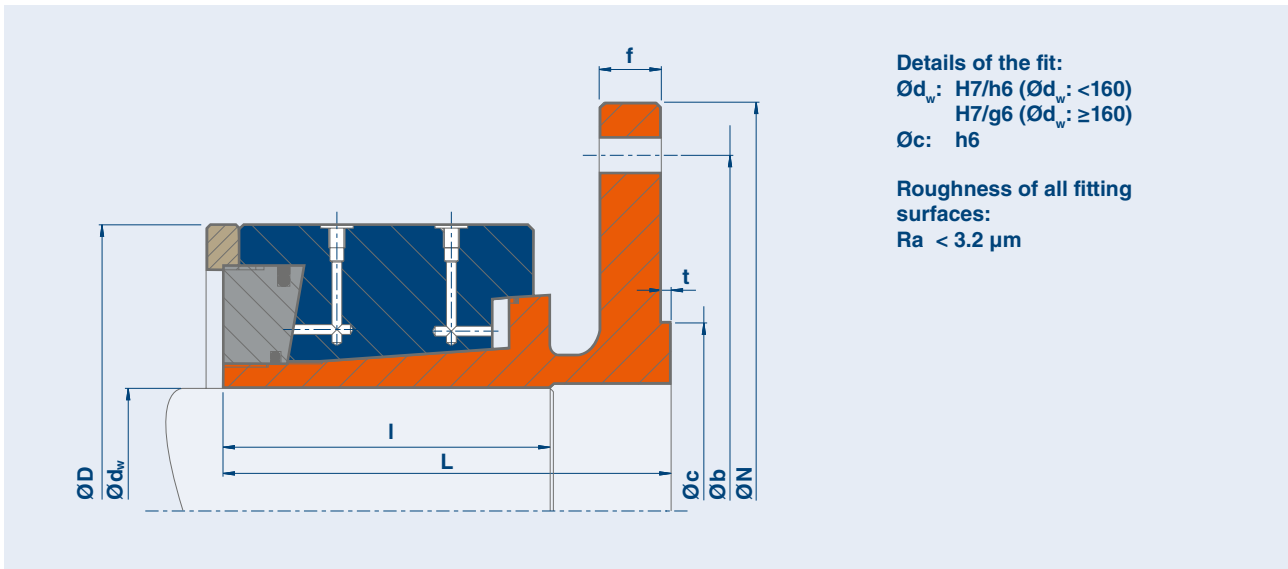
Further sizes on request. Subject to technical change without notice.

\*Grade 10.9 \*\*Diameter d<sub>w</sub> can be chosen within given limitations.

\*\*\*Tightening bolts for Model A: DIN EN ISO 4014/4017 Grade 10.9, Model B: DIN EN ISO 4762 Grade 10.9

**When ordering please state:** (Type x Ød<sub>w</sub> x model), e.g. FKHA 590 - 220 x 225 x A, where necessary dimensions N, b, c, t, number & size of the flange bolts

# STÜWE® Flange Coupling Type FKHYD



## Code

$M_t$  Maximum transmissible torque of a flange coupling with  $P_{ax} = 0$   
**max. hyd. Press** Maximum hydraulic pressure

Dimensions N, b, c, t plus quantity and size of flange bolts depend on the counter-flange. These data must therefore be also given when ordering. Flanges can also be supplied with an internal spigot location.

## Flange Coupling FKHYD

| Type            | $d_w^*$<br>mm | $M_t$<br>kNm | max. hyd. press<br>bar | N<br>mm | D<br>mm | L<br>mm | I<br>mm | f<br>mm | kg  |
|-----------------|---------------|--------------|------------------------|---------|---------|---------|---------|---------|-----|
| FKHYD 400 - 120 | 120           | 40           | 450                    | 400     | 300     | 150     | 90      | 30      | 69  |
|                 | 130           | 48           |                        |         |         |         |         |         |     |
|                 | 140           | 57           |                        |         |         |         |         |         |     |
| FKHYD 470 - 160 | 150           | 87           | 450                    | 470     | 340     | 185     | 117     | 36      | 111 |
|                 | 160           | 101          |                        |         |         |         |         |         |     |
|                 | 170           | 115          |                        |         |         |         |         |         |     |
| FKHYD 520 - 180 | 170           | 115          | 450                    | 520     | 370     | 185     | 117     | 36      | 131 |
|                 | 180           | 130          |                        |         |         |         |         |         |     |
|                 | 190           | 147          |                        |         |         |         |         |         |     |
| FKHYD 560 - 200 | 190           | 167          | 450                    | 560     | 430     | 210     | 140     | 36      | 189 |
|                 | 200           | 186          |                        |         |         |         |         |         |     |
|                 | 210           | 208          |                        |         |         |         |         |         |     |
| FKHYD 590 - 220 | 220           | 248          | 450                    | 590     | 460     | 240     | 160     | 40      | 234 |
|                 | 230           | 275          |                        |         |         |         |         |         |     |
|                 | 240           | 304          |                        |         |         |         |         |         |     |
| FKHYD 630 - 240 | 240           | 360          | 450                    | 630     | 520     | 260     | 180     | 40      | 319 |
|                 | 250           | 394          |                        |         |         |         |         |         |     |
|                 | 260           | 430          |                        |         |         |         |         |         |     |
| FKHYD 710 - 260 | 260           | 435          | 450                    | 710     | 570     | 310     | 220     | 40      | 455 |
|                 | 270           | 474          |                        |         |         |         |         |         |     |
|                 | 280           | 515          |                        |         |         |         |         |         |     |

\*Diameter  $d_w$  can be chosen within given limitations.

**When ordering please state:** (Type x  $\varnothing d_w$ ), e.g. FKHYD 470 - 160 x 155, dimensions N, b, c, t, number & size of the flange bolts



## Flange Coupling FKHYD

| Type             | d <sub>w</sub> *<br>mm | M <sub>t</sub><br>kNm | max. hyd. press<br>bar | N<br>mm | D<br>mm | L<br>mm | l<br>mm | f<br>mm | kg   |
|------------------|------------------------|-----------------------|------------------------|---------|---------|---------|---------|---------|------|
| FKHYD 800 - 300  | 290                    | 765                   | 450                    | 800     | 640     | 320     | 220     | 50      | 611  |
|                  | 300                    | 832                   |                        |         |         |         |         |         |      |
|                  | 310                    | 901                   |                        |         |         |         |         |         |      |
| FKHYD 900 - 340  | 330                    | 850                   | 450                    | 900     | 720     | 360     | 255     | 50      | 857  |
|                  | 340                    | 910                   |                        |         |         |         |         |         |      |
|                  | 360                    | 1030                  |                        |         |         |         |         |         |      |
| FKHYD 1000 - 380 | 360                    | 1016                  | 450                    | 1000    | 760     | 368     | 260     | 50      | 996  |
|                  | 380                    | 1147                  |                        |         |         |         |         |         |      |
|                  | 400                    | 1270                  |                        |         |         |         |         |         |      |
| FKHYD 1100 - 420 | 400                    | 1915                  | 450                    | 1100    | 850     | 420     | 290     | 50      | 1342 |
|                  | 420                    | 2100                  |                        |         |         |         |         |         |      |
|                  | 440                    | 2300                  |                        |         |         |         |         |         |      |

Further sizes on request. Subject to technical change without notice.

\*Diameter d<sub>w</sub> can be chosen within given limitations.

**When ordering please state:** (Type x Ø d<sub>w</sub>), e.g. FKHYD 900 - 340 x 360, dimensions N, b, c, t, number & size of the flange bolts

**STÜWE**®

**STÜWE® GmbH & Co. KG**

Zum Ludwigstal 35 - 45527 Hattingen

Tel. +49 2324 394-0 - Fax +49 2324 394-30

[www.stuewe.de](http://www.stuewe.de) - [info@stuewe.de](mailto:info@stuewe.de)

For further information about our international sales agents we kindly refer you to [www.stuewe.de/en/contact](http://www.stuewe.de/en/contact)