

3.3.4.3 900-1700nm Cameras

3.3.4.3.1 GigE / USB InGaAs NIR Cameras

SP1203 high resolution, SP1201 low resolution and XC-130

Features

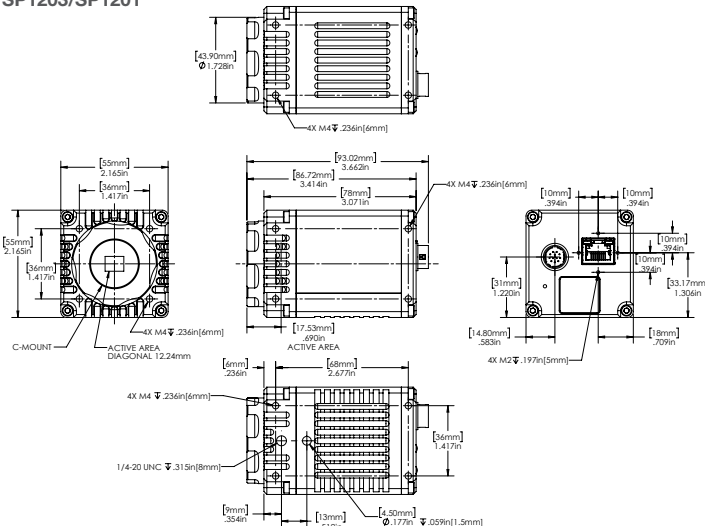
- NIR performance
- Resolution:
 - VGA: SP1203
 - QVGA: SP1201, XC-130
- Exclusive Ultracal for ISO conforming accuracy
- Available with BeamGage software



Model	SP1203	SP1201	XC-130			
Application	NIR wavelengths, high resolution, ROI and binning	NIR wavelengths, ROI and binning	NIR wavelengths, ROI and binning			
Wavelengths	900-1700nm	900-1700nm	900-1700nm			
Active area	9.6 x 7.6mm	9.6 x 7.6mm	9.6 x 7.6mm			
Pixel spacing	15µm square	30µm square	30µm square			
Beam sizes ⁽¹⁾	150µm-7.4mm	300µm-7.4mm	300µm-7.4mm			
Number of effective pixels	640 x 512 (VGA)	320 x 256 (QVGA)	320 x 256 (QVGA)			
CCD recess	C-mount, (Optional)	C-mount, (Optional)	C-mount, (Optional)			
Dynamic range	68dB	59dB	low gain 68dB, high gain 60dB			
Saturation Intensity ⁽²⁾	12.6 µW/cm ² @ 1064nm 8.9 µW/cm ² @ 1550nm	0.4 µW/cm ² @ 1064nm 0.2 µW/cm ² @ 1550nm	1.3 µW/cm ² @ 1550 nm			
Frame rate ⁽³⁾	60 Hz	60 Hz	100 Hz ⁽⁴⁾			
Non-uniformity correction (NUC)	Automatic NUC table selection	Automatic NUC table selection	2-Point correction plus bad pixel correction, NUC files provided			
Snap-shot mode	Via external TTL trigger, cable provided	Via external TTL trigger, cable provided	Via external TTL trigger, cable provided			
Compatible light sources	CW, Pulsed	CW, Pulsed	CW, Pulsed			
Trigger	Supports both Trigger and strobe out	Supports both Trigger and strobe out	Supports both Trigger and strobe out			
Photodiode trigger (Optional) ⁽⁵⁾	InGaAs response: SP90409	InGaAs response: SP90409	InGaAs response: SP90409			
Exposure control	10µs-50ms	150µs-10ms	1us to 400 sec in Low Gain mode			
Imager Cooling	Integrated Thermo-Electric Sensor Cooling (TEC)	Integrated Thermo-Electric Sensor Cooling (TEC)	Thermoelectric cooler plus forced convection			
Ambient operating temperature	-20° to 55° C	-20° to 55° C	0 - 50° C			
Dimensions	55mm x 55mm x 78mm	55mm x 55mm x 78mm	111mm x 87mm x 107mm			
Weight	370 g (0.8 lbs)	370 g (0.8 lbs)	approx. 1.8 kg			
PC interface	GigE (POE)	GigE (POE)	USB 2.0, special cable provided			
Compliance	CE, UKCA, China RoHS					
Ordering Information						
Supported software	Item	P/N	Item	P/N	Item	P/N
BeamGage Professional	BGP-GigE-SP1203	SP90524	BGP-GigE-SP1201	SP90523	BGP-USB-XC130	SP90241 ⁽⁷⁾
	SP1203 Kit ⁽⁶⁾	SP90536	SP1201 Kit ⁽⁷⁾	SP90535		
BeamGage Professional (for USA only)	BGP-GigE-SP1203	SP90548	BGP-GigE-SP1201	SP90547		

- Notes:
- (1) The maximal beam size refers to "Flat-top" laser beams. For Gaussian beams, reduce maximum beam size by 1/3.
 - (2) Camera set to full resolution and 10 ms exposure time, CW source.
 - (3) Highly dependent on PC processor and graphics adapter performance.
 - (4) The uncorrected rate, final corrected rate will be less.
 - (5) For more information please see "Optical Camera Trigger" catalog page.
 - (6) Contains USB 3.0 cable to Gigabit Ethernet Adaptor, CAT6 Ethernet Cable, Power with Trigger cable and 3 ND filters.
 - (7) Comes with USB A to micro B cable, Trigger cable and 3 ND filters.

SP1203/SP1201



XC-130

