

# Wire feeder WD 300

## For robotic- and automatic applications MIG/MAG, TIG, LASER

Technical data (IEC 60974-5):	
<b>Wire feeder</b>	<b>DIX WD 300</b>
Wire feed speed	0 - 20 m/min
Welding current, max.	500A/60% duty cycle
Wire diameter	0.8 - 1.6 mm
Line voltage	42V/50Hz
Protection class	IP 23
Dimension (L/W/H)	275/220/250 mm
Weight	approx. 7.2 kg
<b>Spool holder</b>	<b>DIX WDS 200</b>
<b>(optional)</b>	<b>DIX WDS 300</b>

### Properties

- ▶ Supportive PUSH operation for wire feeding through long distances
- ▶ PUSH-PUSH principle in combination with DINSE – welding torches with integrated speed regulated motor
- ▶ Torque controlled motor with adjustable maximum torque (feed power) prevents the filler wire from snapping
- ▶ Exact wire feeding independent of twisting, bending and torch set length
- ▶ For all power sources
- ▶ Light, robust and fully insulated through plastic housing

### Application

- ▶ Solid and flux-cored wires
- ▶ Non- and low alloyed steels
- ▶ High alloyed steels
- ▶ Aluminium-, magnesium-, copper-and nickel alloys
- ▶ Small to large material thicknesses

Options according to range of application



Model for supportive PUSH operation



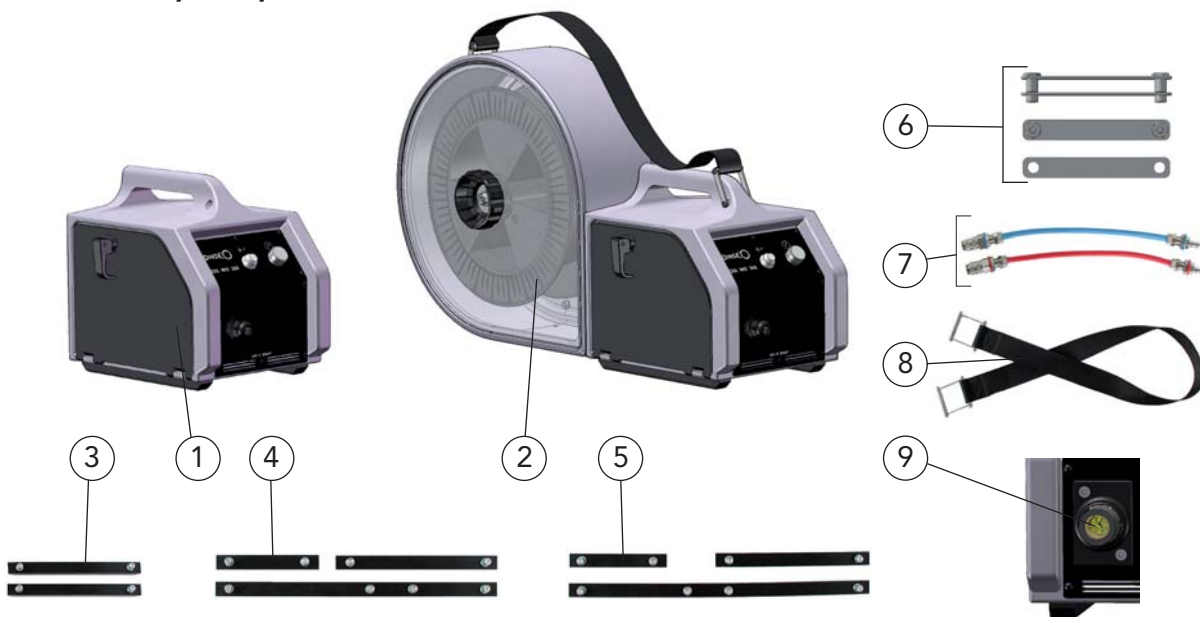
Model - Laser, MIG/MAG – with DIX WDS 200/300 (PUSH-PUSH operation)



Model with wire barrel respectively for PUSH-PUSH operation

# Wire feeder WD 300

## For robotic- and automatic applications MIG/MAG, TIG, LASER



Description	Part name	Part number
1 Wire feeder Without drive roll*	DIX WD 300	730030000
2 Spool holder	DIX WDS 200	730520000
Spool holder	DIX WDS 300	730530000
<b>Options:</b>		
3 Slide bar set For wire feeder DIX WD 300	DIX WDG 100	738030000
4 Slide bar set For wire feeder DIX WD 300 with spool holder DIX WDS 200	DIX WDG 200	738035200
5 Slide bar set For wire feeder DIX WD 300 with spool holder DIX WDS 300	DIX WDG 300	738035300
6 Connection set For connecting DIX WD 300 with DIX WDS 200/300	DIX WDV 100	738010000
7 Water set For liquid cooled model	DIX WDW 100	738040000
8 Carry strap set For manual transport of DIX WD 300 with DIX WDS 200/300	DIX WDT 100	738020000
9 Torch connecting set Only ready-installed available		
Cold wire set	DIX WDA 300	738050009
Hot wire set	DIX WDA 301	738050011
MAG set	DIX WDA 302	738050012
TIG set Without picture	DIX WDA 303	738050013
Gas solenoid valve set Without picture, for cold wire-, hot wire- and TIG set	DIX WDX 100	719280001

\* Each wire diameter requires his own drive roll.  
Part names and part numbers of the drive rolls are given in the spare parts and wear parts lists.

► All sets available ready-installed on request (specify when placing an order).  
Other fittings on request.

**Hint:**

Liners, capillary liners and service tools you will find in chapter tools and accessories.

