

# JuLI™ Br

Cell History Recorder



JuLI™ Br  
NESMU-JUB-001E (V.2.0)

## User Manual



## NanoEnTek

---

### NanoEnTek Inc. (HQ)

12F, 5, Digital-ro 26-gil, Guro-gu, Seoul, 08389, Korea

Tel. +82-2-6220-7940

Fax. +82-2-6220-7721

---

### NanoEnTek USA Inc.

5627 Stoneridge Drive Suite 304, Pleasanton,  
CA 94588, USA

Tel : +1-925-225-0108, +1-888-988-0108(Toll free)

Fax : +1-925-225-0109

---

### Email

sales@nanoentek.com

---

### Website

www.nanoentek.com

# Table of contents

<b>Product components</b>	<b>3</b>
<b>Product overview</b>	<b>4</b>
<b>Installation</b>	<b>5-6</b>
<b>Description</b>	<b>7-12</b>
<hr/>	
<b>Operation</b>	<b>13-51</b>
<b>Focusing</b>	<b>13-19</b>
Adjust the focus	13-14
Auto focus	15
ROI Auto focus	16
Confluence	17-18
Capture	19
<b>Monitoring</b>	<b>20-23</b>
<b>Data</b>	<b>24-32</b>
Open data	24-26
Screenshot	27
Save to USB	28-29
Rename	30
Delete	31-32
Counting	33-36
<b>Settings</b>	<b>37-39</b>
Set up parameter	37
Update date & time	38
Control LED power	38
Update software & firmware	38
Check the disk space	39
<b>PC software</b>	<b>40-51</b>
Introduction	40
Installation	40-41
Function guide	42
Home	43
Open data	44-45
Confluence	46
Edit movie file	47
Dual view	48-49
Create dual movie	50
Export data	51
<hr/>	
<b>Cleaning &amp; maintenance</b>	<b>52</b>
<b>Troubleshooting</b>	<b>53-55</b>
<b>Warranty</b>	<b>56</b>
<b>Safety precaution</b>	<b>57-58</b>
<b>Product specifications</b>	<b>59</b>
<b>Technical support</b>	<b>60</b>

# Product components

JuLI™ Br is shipped with the following components.  
Please check all components listed below when an instrument was delivered.  
If any items are missing or damaged, contact your local distributor or e-mail [sales@nanoentek.com](mailto:sales@nanoentek.com)

---

**Scope unit**

JULI-BRSC

1 EA

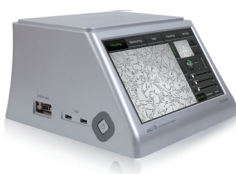


---

**Station unit**

JULI-BRST

1 EA



---

**Power cord**4 pcs/set, for U.S./Canada/  
Taiwan/Japan, Europe or UK

1 SET



---

**Connection cable**

3 M

1 EA



---

**USB drive**

4 GB

1 EA



---

**User manual**

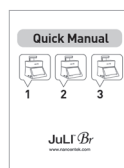
1 EA



---

**Quick manual**

1 EA



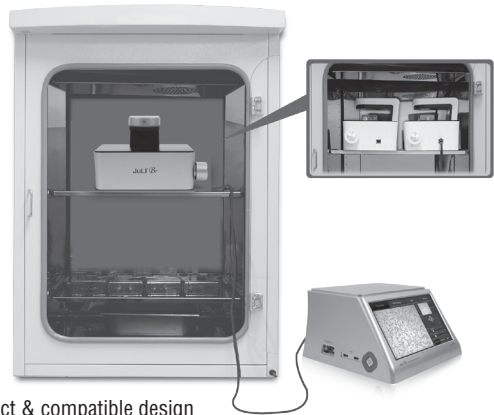
· Model JULI-BRSC <Scope unit> is only used in conjunction with the <Station unit>.

# Product overview

An increasing number of researchers are using live-cell imaging to study cellular functions. The JuLI™ Br, a smart Bright-cell movie analyzer, was designed for a variety of biological experiments.

JuLI™ Br uses state-of-the-art optics to get live-cell images from various cell culture dishes. It is able to detect the quantified cell confluence results with low variation and make growth curve using image based analysis.

JuLI™ Br is able to capture sequential time-lapse bright images which can be converted to movie files (.avi) automatically. The compact design allows you to install the system in your cell-culture incubator easily. It can be used to compare control and experimental samples using dual systems (\*optional), concurrently.



## Features of JuLI™ Br, live cell movie analyzer

### Compatible with cell-culture incubator

: Operate inside cell-culture incubator with compact & compatible design

### Time-lapse image capture & recording movie

: Sequential time-lapse images are stored and can be converted to movie file automatically

### Automated quantitative cell confluence analysis

: Quantified cell confluence results with low variation and growth curve

### 10.1" color LCD touch screen

: Easy-to-use system control

### Semi-automated focusing through LCD

: Focus adjustment using focus interface on LCD with knob

### Dual system (\*Optional)

: Compare the control & experimental data at the same time

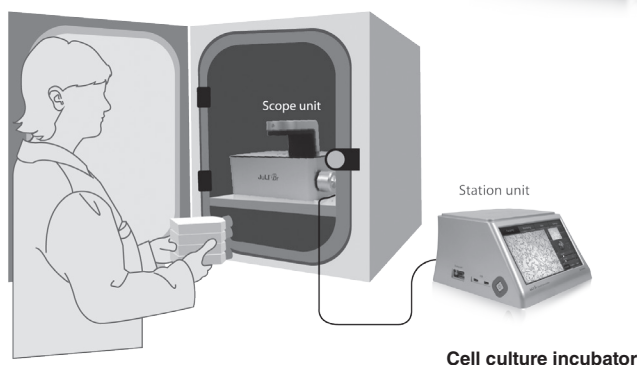


# Installation

## Installing JuLI™ Br

Live-cell images from various cell culture dishes are directly captured in a cell culture incubator. This compact design allows an instrument to be installed in an incubator and prevents contamination by maintaining a sterile environment. Also, the easily-viewed display allows quick and convenient use in a cell culture incubator while capturing time lapse images.

Dimensions of Scope unit	Size
Width	300 mm
Depth	190 mm
Height	188 mm
Weight	4 kg



### IMPORTANT

**JuLI™ Br is optimized into standard size of cell culture incubator.**

*It is recommend that the temperature should be stabilized in case of small size incubator before using the instrument.*

**Avoid exposing JuLI™ Br to UV light.**

*UV light may degrade components, including plastic. Damage from UV exposure is not covered under the manufacturer's warranty.*

**Always wipe surfaces with ethanol-soaked paper towels, not directly spray ethanol anywhere on JuLI™ Br.**

# Installation

## Installing JuLI™ Br

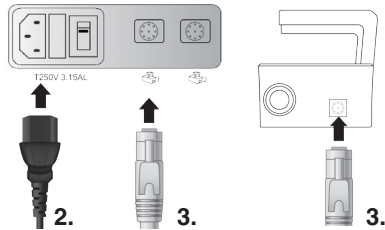
1. Place the instrument on a flat, dry and level surface after unpacking the instrument. Allow at least 10 cm (4 inches) of free space at the back of JuLI™ Br for proper ventilation and prevention of overheating of electronic components.



2. Plug the supplied power cord into JuLI™ Br.

3. Connect scope unit to station unit using supplied connection cable.

(\* For dual monitoring, 2<sup>nd</sup> scope unit also should be connected to station unit.)

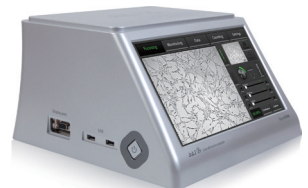


### **IMPORTANT**

*Connect to the 2<sup>nd</sup> scope unit after connecting to the 1<sup>st</sup> scope unit completely*

4. Plug the power cord into the electrical outlet. Be sure to only use the power cord supplied with the instrument. Powering the instrument with an unapproved power cord may damage the instrument.

5. When JuLI™ Br is ready to use, start JuLI™ Br by pressing the **Power button** on the station unit.



# Description

## Front view

### <Station unit>

#### LCD touch screen

: located at the front of the instrument, it contains buttons for necessary functions and displays bright field images.

### <Scope unit>

#### Focus knob

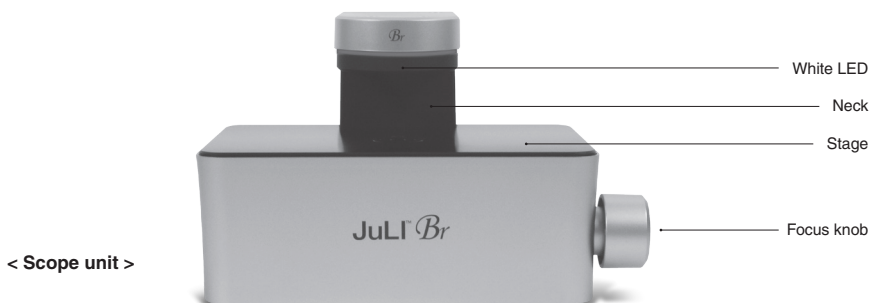
: is used to adjust the image quality to obtain better bright cell images.

#### Stage

: place sample here.

#### White LED

: provides bright image viewer.



# Description

## Side view

### <Station unit>

#### Power button

: turn an instrument on and off by pressing the **Power button**.

#### USB Port

: insert a USB drive to save and transport images to PC.

#### Display port

: connect to external monitor.(resolution: 1366 X 768 pixels)

: make sure to turn off an instrument before connecting.

### <Scope unit>

#### Connection port

: port to connect scope unit with station unit .

### < Scope unit >



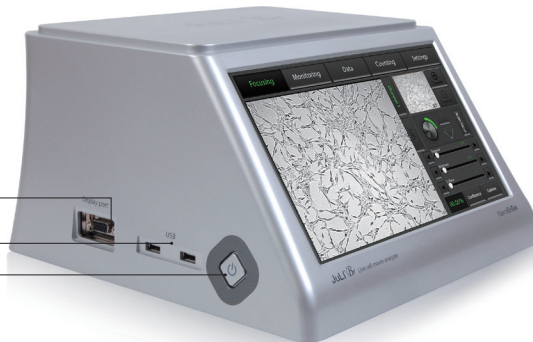
Connection port

### < Station unit >

Display port

USB port

Power button



# Description

## Rear view

### <Station unit>

#### Power inlet

: connects JuLI™ Br to an electrical outlet using the supplied power cord and the appropriate plug (based on the electrical outlet configuration in your country).

#### On/off switch

: the main power switch. It is not necessary to use the on/off switch for day-to-day operation of the instrument.

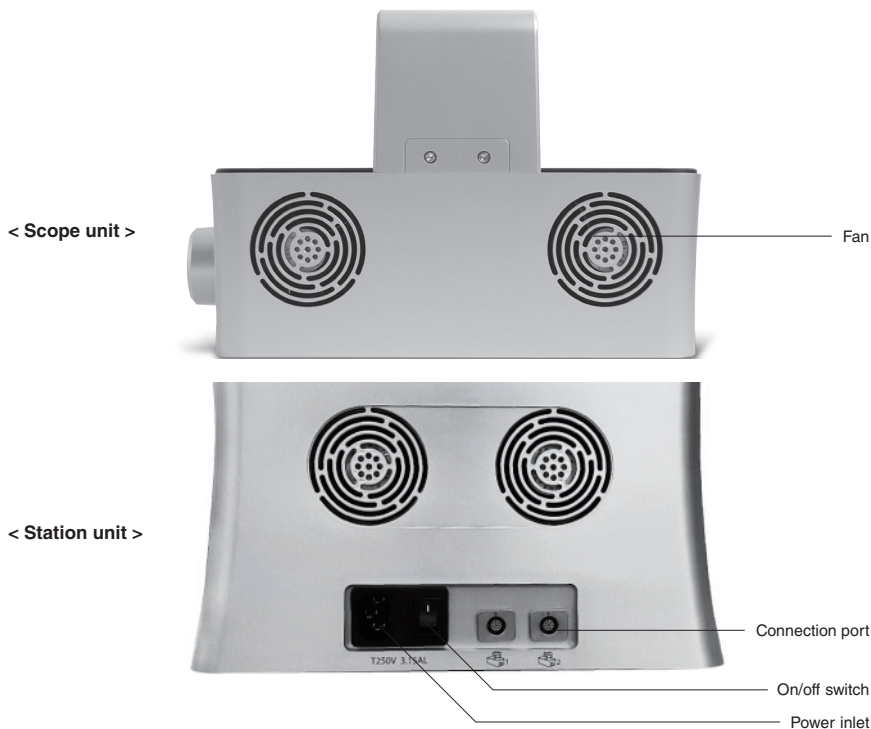
#### Connection port

: port to connect scope unit with station unit.

### <Scope unit>

#### Fan

: machinery cooling system.

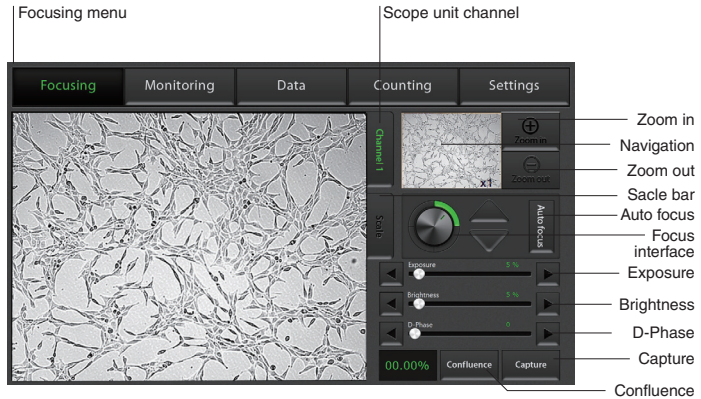


# Description

## User interface

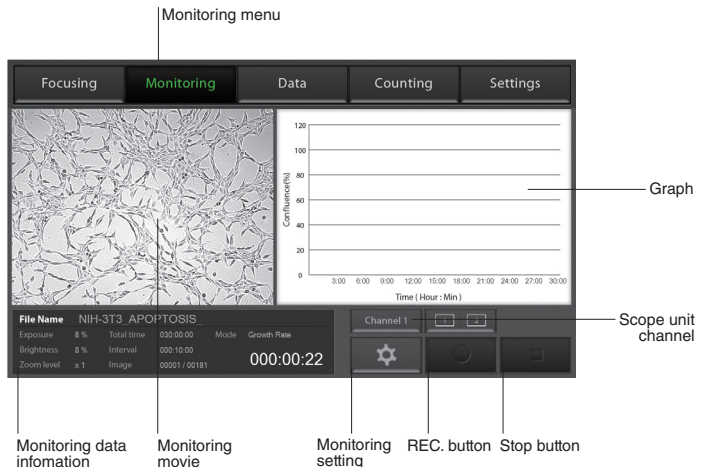
### Focusing menu

The user interface of JuLI™ Br, Live cell movie analyzer provides new tools to expand cellular research through proprietary software. Insightful data can be acquired, such as proliferation assays.



## User interface

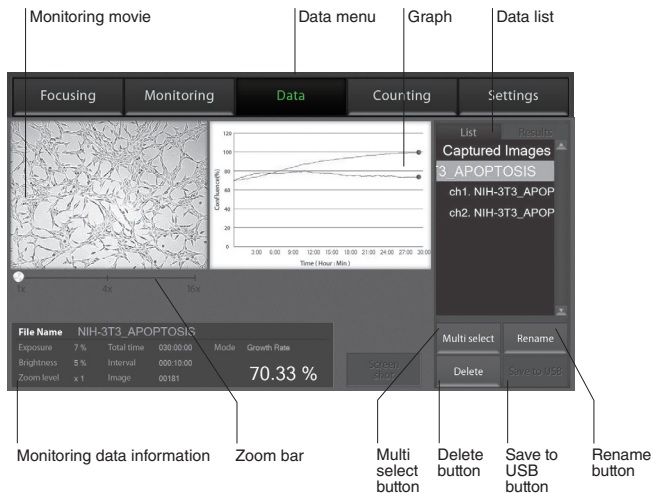
### Monitoring menu



# Description

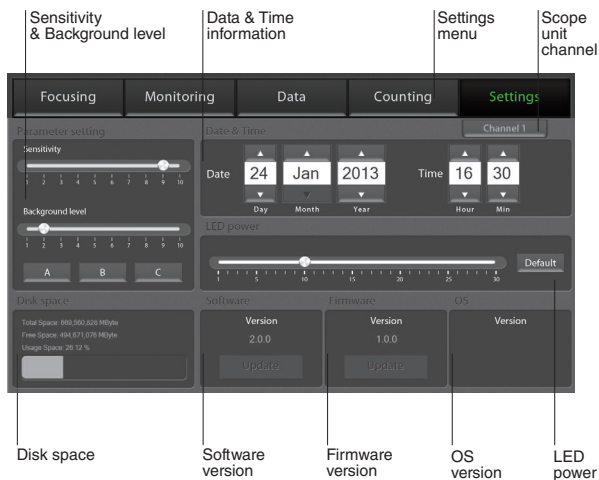
## User interface

Data menu



## User interface

Settings menu



# Description

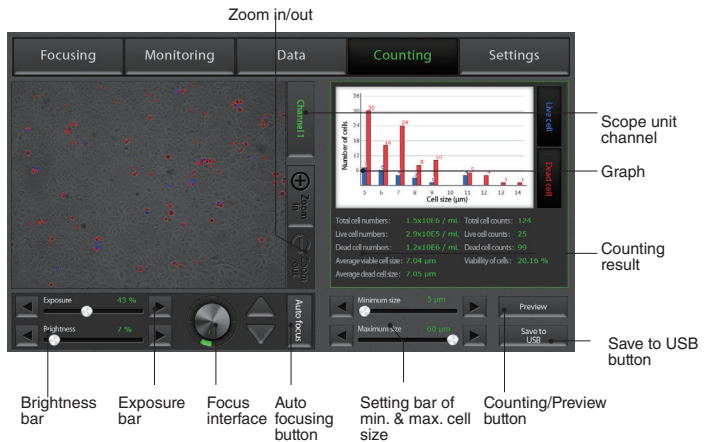
## User interface

### Counting menu

Counting menu is a JuLI™ Br Counting software which can be used with various cell types giving the accurate and fast counting results in the bright mode.

1. Bright counting : to check for the cell viability by trypan blue staining method.

### Counting menu



### Features of JuLI™ Br Counting S/W:

#### Applicable for broad range of cell sizes and types:

Provides data on cell size and is compatible with a wide variety of eukaryotic cells without the need for any special changes between large or small sizes.

**Measures cell measurement ranging from  $1 \times 10^4$  to  $1 \times 10^7$  cells/mL, optimal measurement range from  $1 \times 10^5$  to  $4 \times 10^6$  cells/mL, and cells with sizes ranging from 5 µm to 60 µm.**

#### Innovative Auto-focus technology:

Allows to get the optimized focus without variation of manual focus.

#### Accurate and fast counting result:

Provides **counting result** without focus variation and regardless of clumped cells in **less than 10 seconds**

(Guaranteed the results and counting time using Auto-focus function.)



# Operation

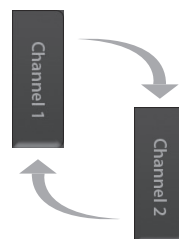
## Focusing

Adjust the focus

1. Press the **Power button** to start JuLI™ Br. The main screen will be displayed.
2. Place the sample on the stage.



3. Adjust the focus for each scope unit if 2<sup>nd</sup> unit is connected to station unit. Press **Channel tab** to select each scope unit.

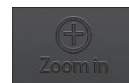


4. To adjust Illumination intensity, use the **Exposure** and **Brightness bar** on the touch screen.

Touch the arrow button (◀ | ▶) for more minute adjustment.



5. If desired, use **Zoom in button** to magnify the desired region.



(» The scale of enlargement can be checked by pressing **Scale bar tab**.)



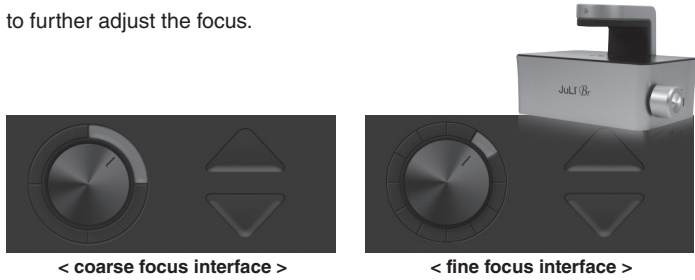
6. If focus of viewing region should be moved, tap a point on navigation window or drag preview window.

# Operation

## Focusing

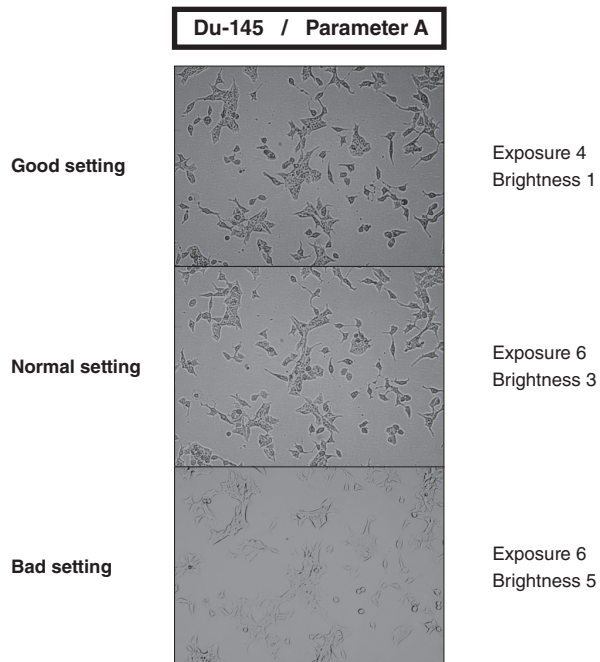
Adjust the focus

7. While viewing cells, use the **Focus knob** or **Focus interface** to further adjust the focus.



- Type of focus interface would be switched by tapping circle point.
- Coarse focus is larger knob which moves up or down rapidly to get the sample into coarse focus.
- Fine focus is smaller knob which moves short distances slowly and is used to get the sample into sharp focus.

The images below show the reference images to adjust focus.



# Operation

## Focusing

Auto focus

1. Adjust the focus of JuLI™ Br. (**Refer to page 12-13**)
2. After adjusting focus, press the Auto focus button to get more accurate focus without individual variations.



· The Auto focus is the auto-focusing function which automatically senses the focus optimized for the analysis software of the JuLI™ Br

### **IMPORTANT!**

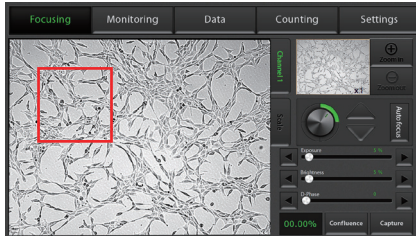
*It is strongly recommended to use Auto focus function after adjusting a focus. If not, it might be the cause of incorrect counting results or viability*

# Operation

## Focusing

ROI Auto focus

1. Adjust the focus of JuLI™ Br. (Refer to page 12-13)
2. Touch the region of interest cell by hand on the screen



- The ROI Auto focus is the auto-focusing function which automatically senses the focus optimized for the analysis software of the JuLI™ Br

### **IMPORTANT!**

*It is strongly recommended to use ROI Auto focus function after adjusting a focus. If not, it might be the cause of incorrect counting results or viability*

# Operation

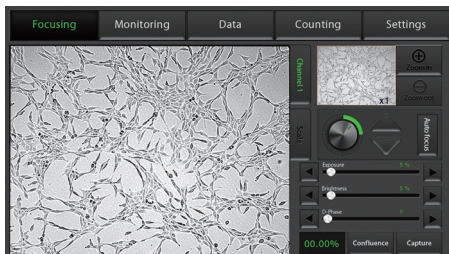
## Focusing Confluence

1. Adjust the focus of JuLI™ Br using **Focusing menu**.  
(on page 11-12)

2. Press **Confluence** button.

Confluence

3. Value of confluence would be shown.



· If the value of confluence should be more accurate, try again after adjusting parameter in **Setting menu**. (on page 29)

Parameter is the recommended value for corresponding to cell line.

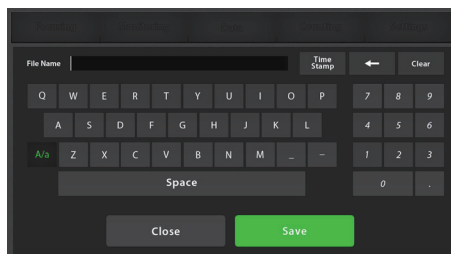
· If confluence should be recalculated, press **Confluence** button after pressing **Preview** button first.

Preview

4. Press the **Capture** button to acquire image with confluence.

Capture

5. Type the name of image that should be saved.  
Then, press **Save** button.



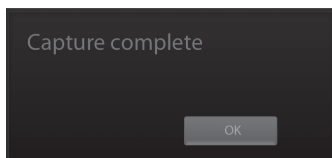
Save

# Operation

## Focusing

### Confluence

6. Check confirmation message 'Capture complete'.  
Saved data can be opened in Data menu. **(on page 20)**

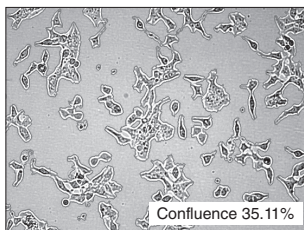
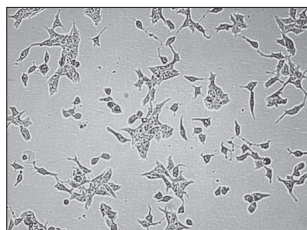


The images below show the guideline for focus to obtain accurate cell confluence.

### Du-145 / Parameter A

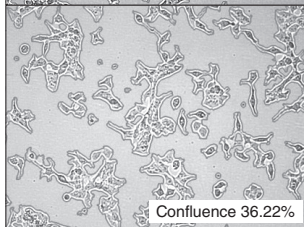
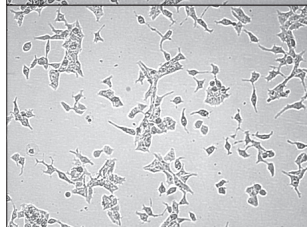
#### Good setting

Exposure 4  
Brightness 1



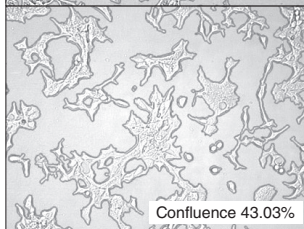
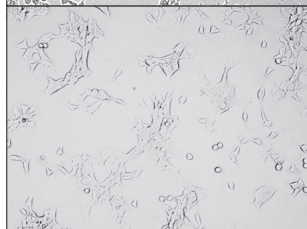
#### Normal setting

Exposure 6  
Brightness 3



#### Bad setting

Exposure 6  
Brightness 5



# Operation

## Focusing

### Capture

1. Adjust the focus of JuLI™ Br using **Focusing menu**.  
(on page 11-12)

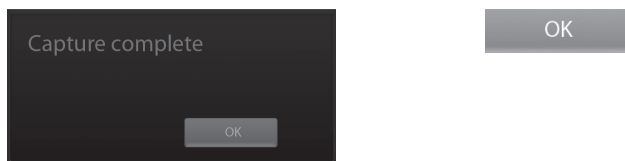
2. Press the **Capture button** to acquire the image.



3. Type the name of image that should be saved.  
Then press **Save button**.



4. Check confirmation message 'Capture complete'.  
Press **OK button**.

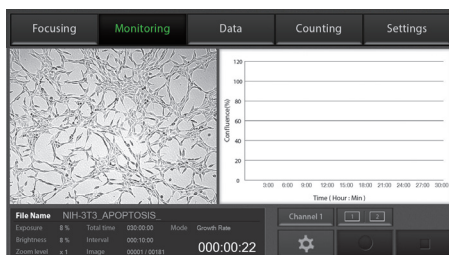


5. Saved data can be opened in Data menu. (on page 20)

# Operation

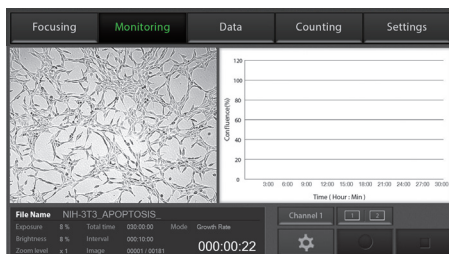
## Monitoring

1. Each scope channel can be viewed by pressing Channel tab if 2<sup>nd</sup> scope unit is connected to station unit.

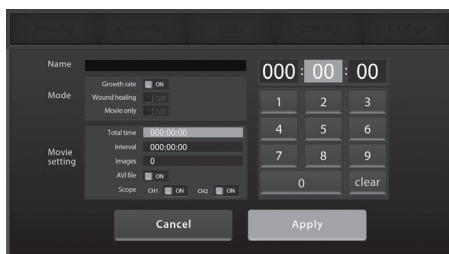


2. Adjust the focus of JuLI™ Br and select the region that should be monitored using **Focusing** menu. (on page 11-12)

Press **Setting** button.



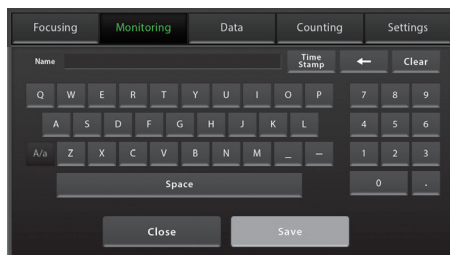
3. Press the **Name** form to type file name for saving images or movies. Then press **Save** button.



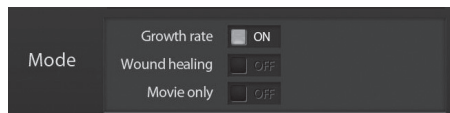


# Operation

## Monitoring

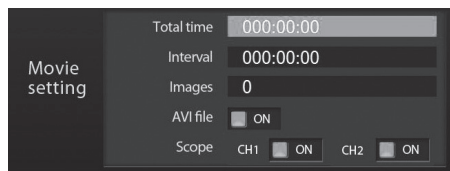


4. Choose the monitoring mode among Growth rate, Wound healing and Movie only.



· **Movie only** means just monitoring cells without a confluence.

5. Press the **Total time** to set up the total running time.  
Press the **Interval** to set the time interval.  
Select **'on' for AVI file** to create AVI file with time lapse images.



Select scope channel should be monitored.

· Choose both channel 1 and channel 2 in case of dual monitoring

### **IMPORTANT!**

*Warm up scope unit for 1 hour in incubator before making a movie. If not, it might be the cause of uncertain data or unclear movies.*

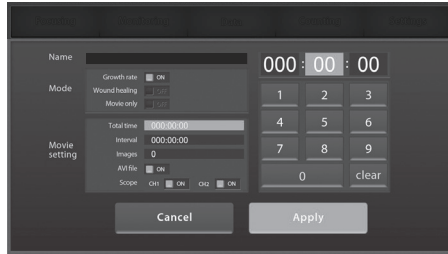
### **IMPORTANT!**

*Cell culture flask should be wetted by the culture media before making movie.*

# Operation

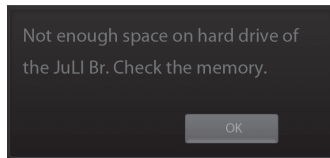
## Monitoring

- Time interval should be set up more than **1 minute** for the best quality result in case of growth rate and wound healing.  
but in case of dual monitoring, more than **5 minutes** is recommended.
- The number of total images will be displayed automatically when data value of “Total Time” and “Interval” are set up.



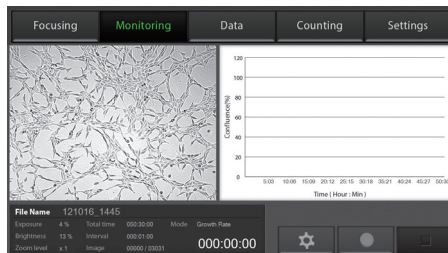
### 6. Press the **Apply** button to save all options.

- If the disk volume of the instrument is not enough to save recording data, then the error message as below will be shown.  
Please try again after deleting data in **Data menu. (on page 20)**



### 7. Press the **Rec. button** to begin recording.

JuLI™ Br displays live cell images continuously during recording.

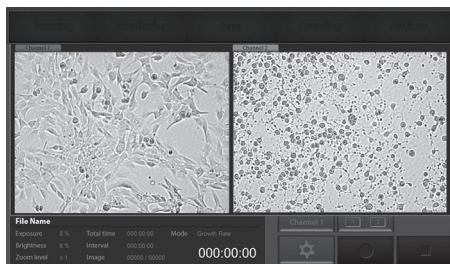


# Operation

## Monitoring

- Dual scope channel can be checked at once by pressing **Dual view button** when 2<sup>nd</sup> scope unit is connected to station unit.

To close dual view mode, double click it.

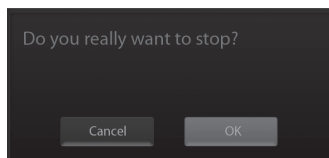


- If the movie should be finished while recording, press **Stop button**.



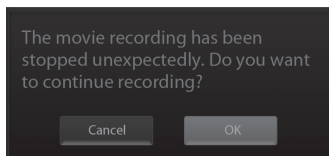
Then the confirmation message as below will be shown.

Press **OK button**.



- Unexpected problems such that the power is off suddenly or the scope unit is not connected to station unit while movie recording could be happened.

Then the error message as below would be shown after restarting the instrument.



Recorded data before getting in problem is saved in the disk of instrument temporarily. So press **OK button** if the movie recording should be continued.

## 8. Recorded data can be opened in **Data menu.** (page 20)

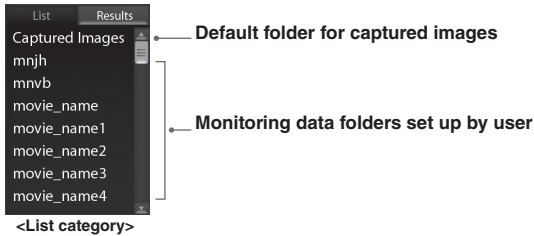
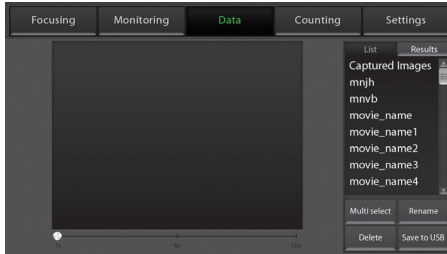
# Operation

## Data

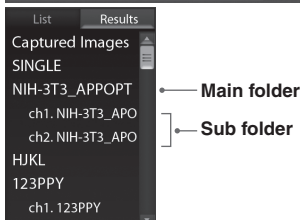
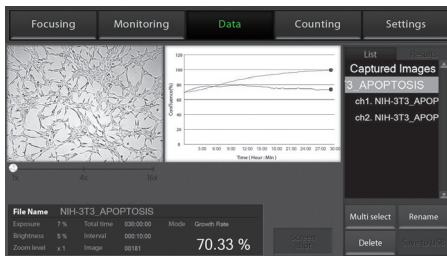
Open data

1 All of saved data could be checked in **Data menu**.

Monitoring data including movie file and time lapse images were saved in each of folder set up by user. And other data except monitoring are saved in a default folder, 'Captured Images'.



2. There are sub folders in case of dual monitoring data. Each control sample and experimental sample data is in the sub folder.

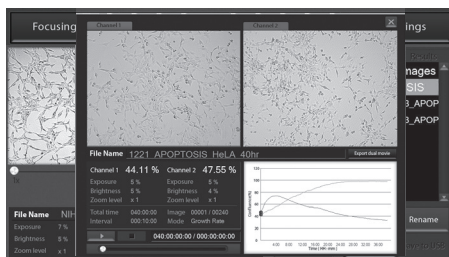


# Operation

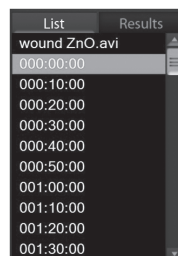
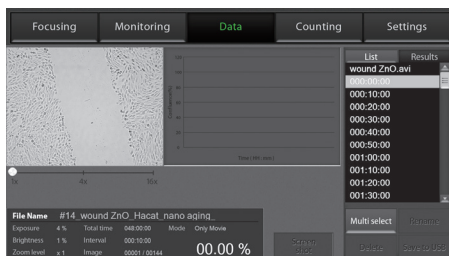
## Data

Open data

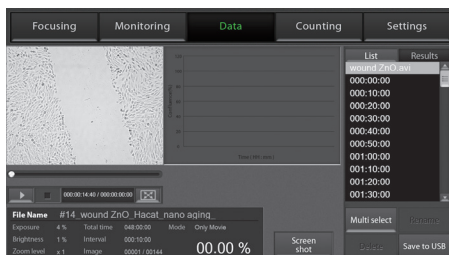
· If you double tap main folder of dual monitoring data, summary data view will show up.



3. Data can be opened or shown by double tapping folder name in **List category** or tapping folder name once and pressing **Result category**.



4. Recorded movie or image file can be shown by tapping its file name. Movie file can be checked by pressing **Play button**.



# Operation

## Data

Open data

5. Magnify movie screen or image screen widely for convenience.



# Operation

## Data

### Screenshot

1. Insert USB drive into USB port.

· If a USB drive is not inserted into USB port, screenshot function can not be used.

2. Press **Screenshot button**.

Screen  
shot

3. Select the desired capture region using moving icon.



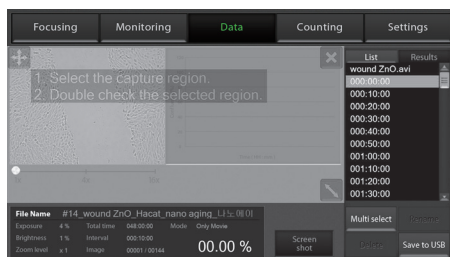
4. Select the screen size of snapshot using size icon.



· Snapshot capture process can be canceled by pressing cancel icon

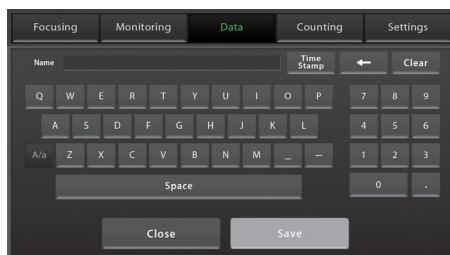


5. After then double tap the selected region.



6. Type the name for saving it, then press **Save button**.

Save



7. Check confirmation message 'Screenshot is saved successfully!'.

Screenshot is saved successfully!

OK

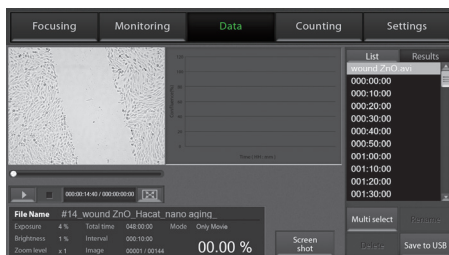
OK

# Operation

## Data

### Save to USB

1. Insert USB drive to USB port.
  - If a USB drive is not inserted into USB port, you can not use this function.
2. Select the folder or file by tapping it once.



3. Several folders or files can be selected at once using **Multi select button**.  
If the wrong file is selected, press **Multi select button** again.



Multi select

4. Press the **Save to USB** button.
  - Only main folder can be saved, not sub folders individually in case of dual monitoring data.

Save to USB

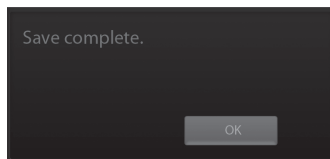


# Operation

## Data

Save to USB

5. Confirmation message 'Save complete' is shown, saving process is completed.



- Experimental sample data (channel 2) is included in control sample data (channel 1) folder in case of dual monitoring

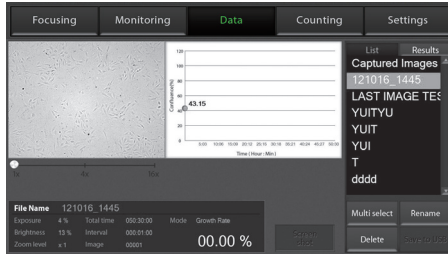


# Operation

## Data

### Rename

1. If you want to change folder or file name, tap the file or folder.



- Rename function can be used for folders of monitored data and files in default folder 'Captured Images'. Not for each files in monitored data folder.

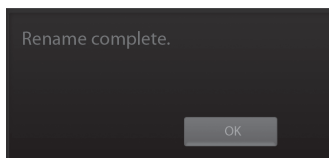
2. Then, press **Rename** button.

- Only main folder can be renamed, not sub folders individually in case of dual monitoring data.

3. Enter new name of folder or file using the keypad display. Then press **Save** button.



4. Check the confirmation message 'Rename complete' and renamed folder or file in List and Result category.

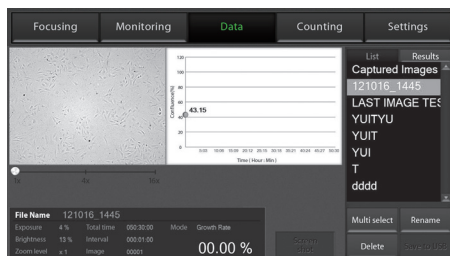


# Operation

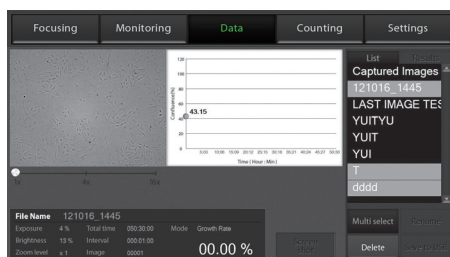
## Data

### Delete

1. Select folder or file which should be deleted from the instrument.



- Delete function can be used for folders of monitored data and files in default folder 'Captured Images', but not for each files in monitored data folder.



Multi select

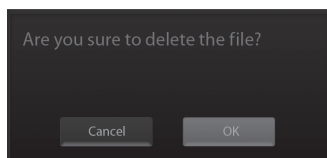
- To delete several folders or files at once, select all of them after pressing **Multi select button**.

2. Delete the folder or file with **Delete button**.

Delete

- If 'Captured Images' folder is selected, all of image files in the folder will be deleted, but not the folder.
- Only main folder can be deleted, not sub folders individually in case of dual monitoring data.

3. Press **OK button** when confirmation message shows up.



OK

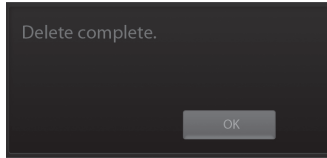
# Operation

---

## Data

Delete

4. Check confirmation message 'Delete complete.'



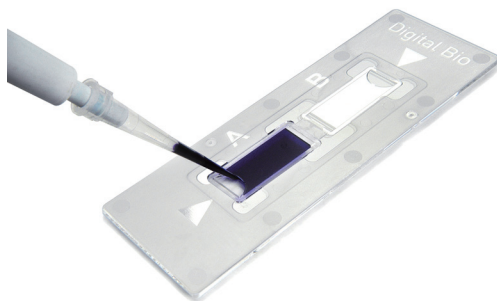
# Operation

## Counting

Sample-  
preparation

· Mix well 10  $\mu$ L of sample and the 10  $\mu$ L of 0.4% trypan blue stain (Bright mode)

1. Load 10  $\mu$ L of sample mixture on the counting slide (side A) using a pipette. The two chambers of the slide and labeled as "A" and "B" for easy tracking of your samples. Each chambers is counted separately.



2. Put the counting slide with the slide holder on the scope unit.



# Operation

## Counting

### Auto focus

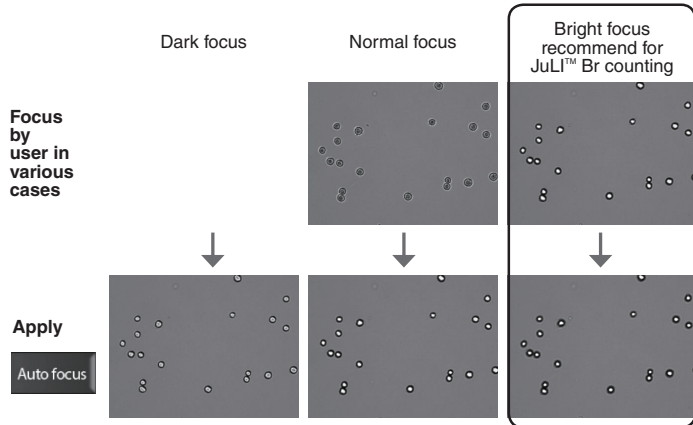
1. Adjust the focus JuLI™ Br (**Refer to page 12-13**)

2. After adjusting focus, press the Auto focus button to get more accurate focus without individual variations.

Autofocus

· The Auto focus is the auto-focusing function which automatically senses the focus optimized for the analysis software of the JuLI™ Br and provides the precise and rapid counting results.

· The example images of HeLa cells show the reference value for adjusting focus.



### **⚠ IMPORTANT!**

*It is strongly recommended to use Auto focus function after adjusting a focus. If not, it might be the cause of,*

- taking more time for counting (more than 10 seconds)
- incorrect counting results or viability

# Operation

## Counting

Bright counting

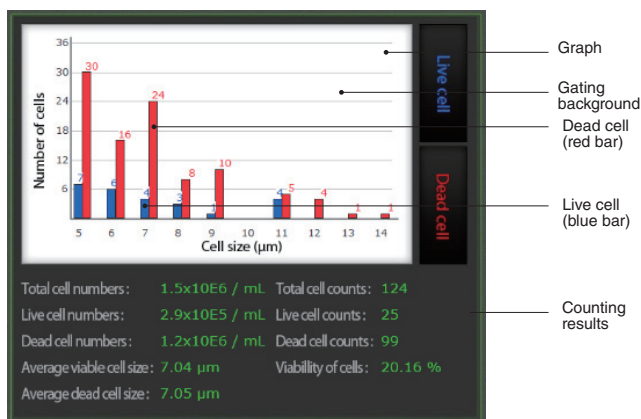
(Stained by trypan blue)

1. Adjust the focus of JuLI™ Br (**Refer to page 12-13**).  
If necessary, press the **Auto focus button** to get more accurate focus without individual variations.
2. Press the **Counting button** for the cell counting.

Counting

- The Br counting button is activated in the Bright mode.
- If necessary, set the **dilution factor** corresponding to the experiment condition (Refer to page 42).

3. The counting results including the total cell, live cell, dead cell, and average cell size show up.



# Operation

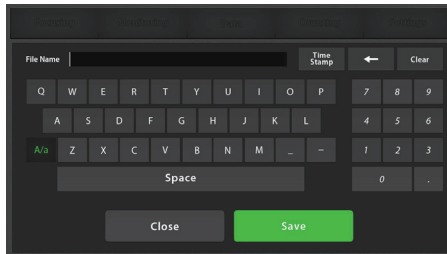
## Counting Save to USB

1. Connect USB drive to the station unit.  
· If a USB drive is not connected to the station unit, you can not use this function.

2. Press the **Save to USB button**.

Save to USB

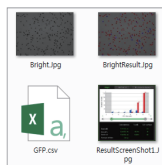
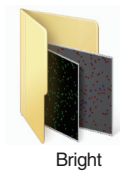
3. Type the folder name in the blank. Then press the **Save button**.



File Name |

Save

· When a user presses the Save button, the user will acquire the images and the counting result file for **one folder automatically**. In a folder, there are one original cell image, one cell counting image marked with different color for the viable and dead cells, one screen shot image with cell counting result data and also, one csv file of counting result data.



< Bright counting result save >

< Fluorescence counting result save >

4. If the confirmation message is shown, the saving process is completed.

Screenshot is saved successfully!

OK

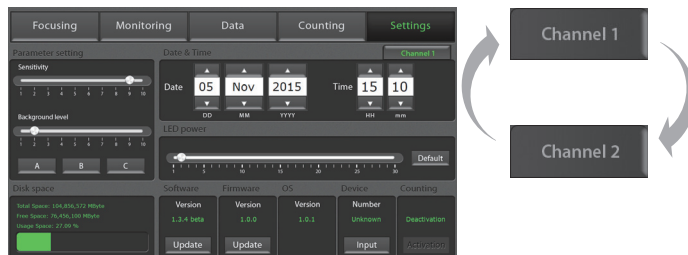
OK



# Operation

## Settings

1. Setting menu works for each scope unit if 2<sup>nd</sup> unit is connected to station unit. Press **Channel tab** to select each scope unit.



## Settings

Set up parameter

Set the recommended parameter value corresponding to cell line. Default value is A.

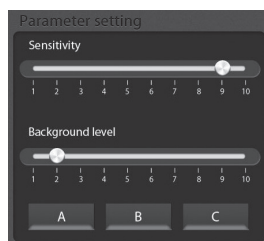
### Sensitivity :

refers to the contrast of the objects from the back ground.

Increased sensitivity provides better recognition of fainter objects in bright field.

### Background level:

decreased background level provides better recognition of fainter objects in bright field.



Parameter	Cell line	Recommendation
A(Default)	HepG2 GH3 Hep3B	Sensitivity level 9
	A549 MCF7	Background level 2
	SH-SY5Y SCN2.2	
	NIH-3T3 F9	
B	HeLa DU-145	
	LNCaP	Sensitivity level 10 Background level 2
C	U-2 OS	Sensitivity level 10
	ADSC	Background level 8

# Operation

## Setting

Update data & time

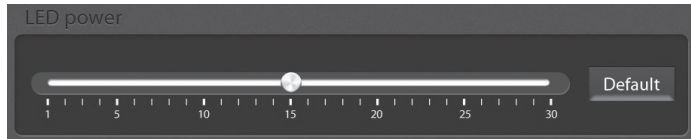
Set up local date & time with **up** and **down button**.



## Setting

Control LED power

Adjust the LED power intensity, tapping the bar to point.  
Default LED power is 10.



## Setting

Update software & firmware

1. Periodically, NanoEnTek adds functionality and other improvements to JuLI™ Br user interface. We recommend keeping your JuLI™ Br update with the latest software and firmware using update button.

If you have any questions about software updates, contact [sales@nanoentek.com](mailto:sales@nanoentek.com).

2. Visit JuLI™ Br website at [www.nanoentek.com](http://www.nanoentek.com) to download updated software which is supplied as a .zip file in your desktop.

3. Unzip the .zip file and save the software in a USB driver.

4. Insert the USB drive into the USB port on JuLI™ Br.

# Operation

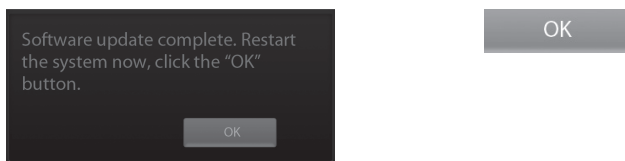
## Setting

Update software & firmware

5. Check if the version of software and firmware are the latest one. Press **Update button**. The update process takes a few seconds.



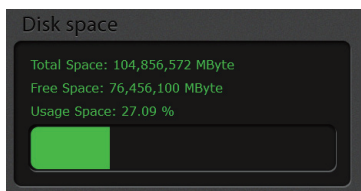
6. After updating, Press OK button to restart JuLI™ Br automatically.



## Setting

Check the disk space

- Check the disk space of JuLI™ Br.  
If no disk space left, saved data should be deleted in Data menu.  
**(on page 20)**



# Operation

## PC software

### Introduction

PC software is designed to manage data from JuLI™ Br.

- User can review saved image from JuLI™ Br in the PC.
- User can recalculate confluence of all images and edited movies.

## PC software

### Installation

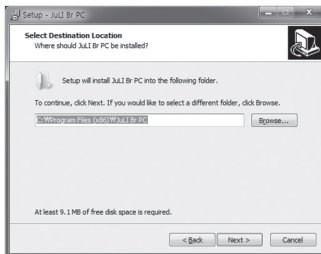
To install PC software, follow the directions as below :  
Check to ensure that the PC is connected to Internet and then the PC software could be installed.



1. Connect the supplied USB driver to the computer. Then open the file "JuLI™ Br PC software"



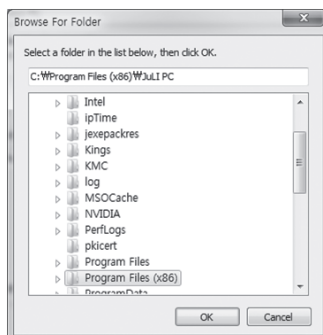
2. The start-up dialogue of the software, as shown like left image, will appear.



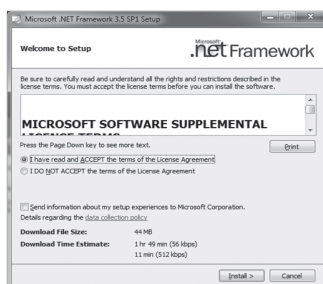
3. Click 'Next' to start installation.

# Operation

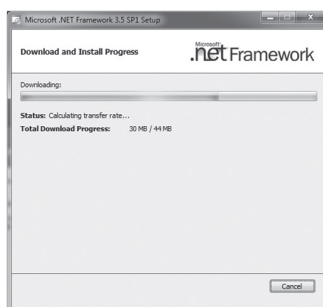
## PC software Installation



4. If you want to change installation folder, click 'Browse' and choose the location that you want.



5. After choosing installation folder, click "Install" to proceed with the installation.



6. The computer activates the "Installation of the software"

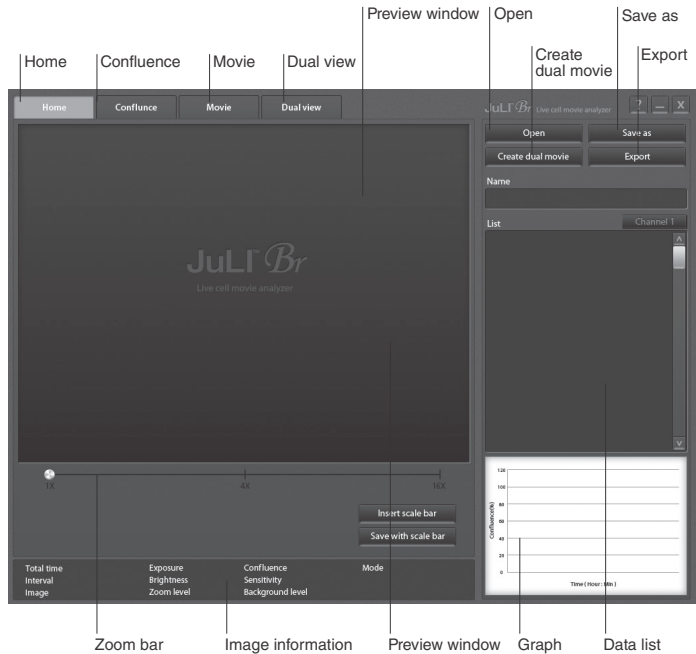


7. If the installation is successful, the PC software program icon will appear on your desktop.

# Operation

## PC software Function guide

When PC software program starts, the interface as below image will be shown.



# Operation

## PC software

Home

1. Press **Insert scale bar** button to insert scale bar on viewing image, if it is necessary.

Insert scale bar

Click **Save with scale bar** button to save image with scale bar information.

Save with scale bar

The screenshot displays the JuLI™ Br Live cell analyzer software interface. The main window shows a grayscale image of cells with a scale bar at the bottom. The interface includes a menu bar (Home, Confluence, Movie, Dual view), a toolbar (Open, Save as, Create dual movie, Export), a Name field (NIH-3T3\_APOPTOSIS), a List of time points (000:00:00 to 001:50:00), a graph showing Confluence (%) over Time (hours:minutes:seconds), and a status bar with various parameters like Total time, Interval, Image, Exposure, Brightness, Zoom level, Confluence, Sensitivity, Background level, Mode, and Growth Rate.

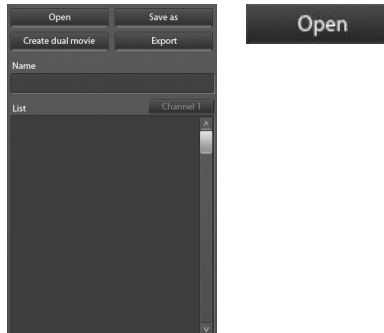
# Operation

## PC software

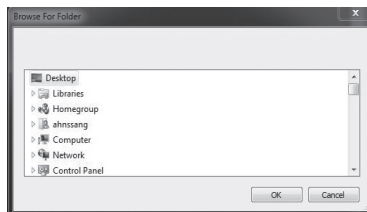
### Open data

1. Click the **Open** button.

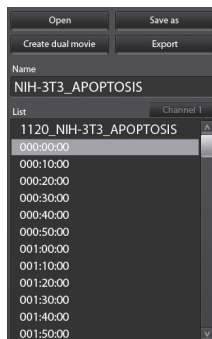
· Folders and files can be opened by dragging and dropping on List region directly.



2. Browse the folder or files and select it.



3. If data opened successfully, data list could be checked out as below image.



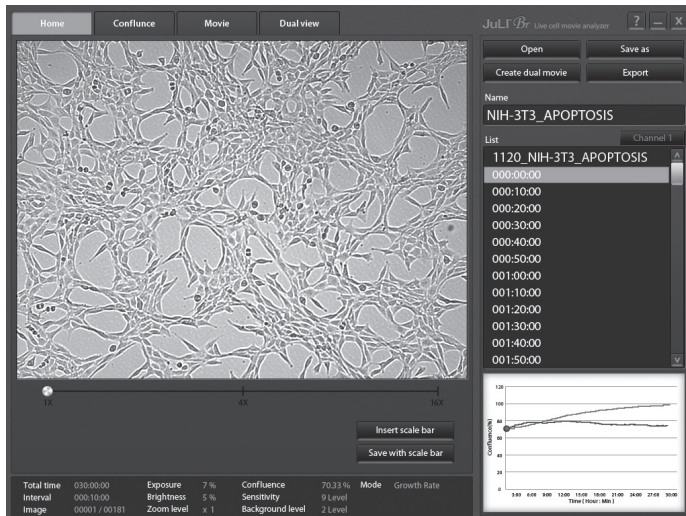


# Operation

## PC software

Open data

- Click the name of image in data list. Preview window will show the image and movie.



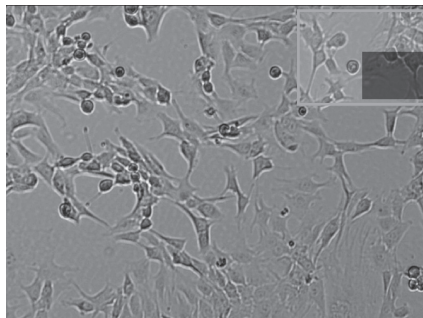
- In case of dual monitoring data, control sample folder and experimental sample folder can be checked easily using **Channel tab**.



- The image can be magnified by tapping zoom bar.



- Select the viewing region by dragging preview window.



# Operation

## PC software

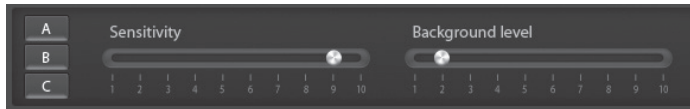
### Confluence

1. Click the confluence menu button.

Confluence

2. Select one image that needs recalculated confluence value from data list.

3. Adjust the image by changing parameters; recommended sensitivity level and background level corresponding to cell line.



Parameter	Cell line	Recommendation
A(Default)	HepG2, GH3, Hep3B, A549, MCF7, SH-SY5Y, SCN2.2, NIH-3T3, F9, HeLa, Du-145	Sensitivity level 9 Background level 2
B	LNCaP	Sensitivity level 10 Background level 2
C	U-2 OS, ADSC	Sensitivity level 10

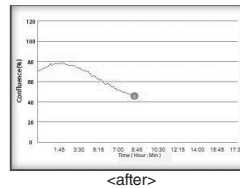
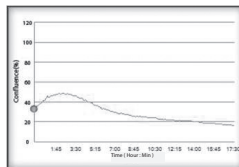
4. Click the **Confluence** button. the value of confluence would be recalculated by new sensitivity level, and background level.

Confluence

5. If the confluence value from step 4 is good enough to use, then check **Apply** box for recalculating confluence value of all images in same folder by new sensitivity and background level.

Apply

6. Confluence graph would be redrawn.



7. Click **Save as** button

if recalculated data should be saved.

Save as

# Operation

## PC software Edit movie file

1. Recorded movie can be shortened easily through PC software. Set the start point and end point by moving the bar.



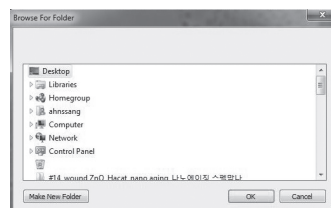
2. Check **Apply** box to edit the movie.



3. Click **Save as** button if edited movie should be saved.



4. Select the folder to save edited movie and press **OK** button.

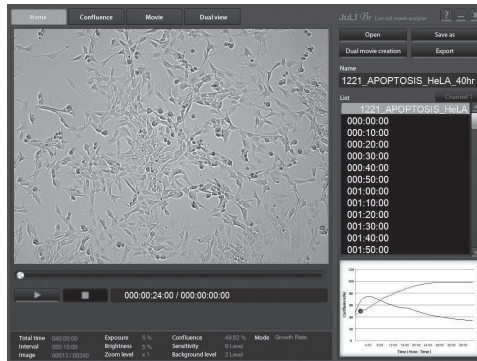


# Operation

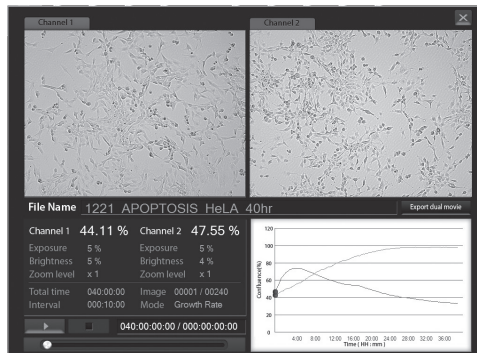
## PC software

### Dual view

1. Dual monitoring data can be checked at once using Dual view menu button. Click **Dual view menu button**.



2. Summary of dual monitoring data will be shown.



3. Individual movie files from control sample and experimental sample can be made into one movie using **Export dual movie button**.

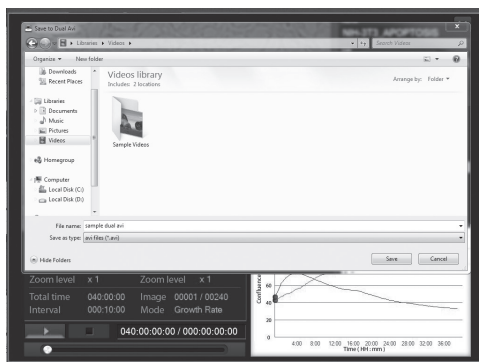
Export dual movie

# Operation

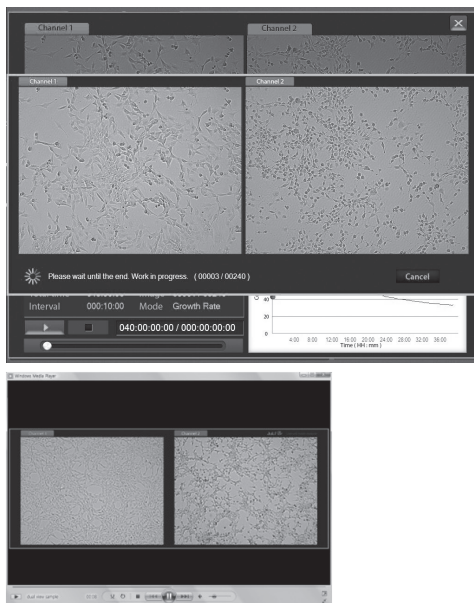
## PC software

Dual view

4. Type file name for merged movie and click **Save button**.



5. Merged movie file will be created after merging process is done.



# Operation

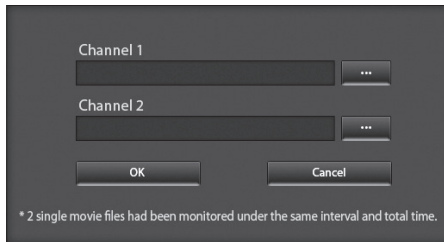
## PC software Create dual movie

1. Individual movie files from 2 different single monitoring data can be made into one movie using **Create dual movie button**.

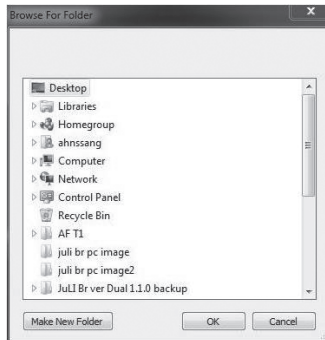
Create dual movie

2. Select 2 different single monitoring data folder for making movie.

· Selected movie files should have been monitored under the same interval and total time.

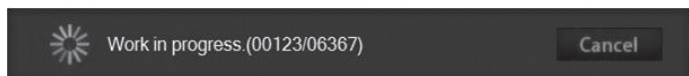


3. Click 'Make New Folder' button and type folder name for dual movie.



Make New Folder

3. Dual movie file will be created after working process is done.



# Operation

## PC software

### Export data

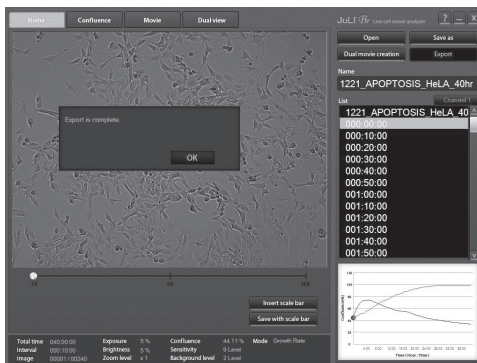
1. Click **Export** button. Information of each image in folder can be exported.



2. Select the folder where exported file should be saved. Type the file name to save exported file.



3. Exported file can be found in folder.



Parameter	Name	Unit	Value	Error
Total time	00:00:00			
Initial	000:10:00			
Image	00001:000001			
Confidence	70.11%			
Brightness	5%			
Contrast	5%			
Sensitivity	Level 2			
Background level	Level 4			
Confidence Value	70.11%			
Initial	000:10:00			
Image	0000000000			
Confidence	0.00000000			
Brightness	0.00000000			
Contrast	0.00000000			
Sensitivity	0.00000000			
Background level	0.00000000			

# Cleaning & maintenance

Clean the surface of JuLI™ Br instrument with a damp cloth.

To clean the LCD screen, turn off JuLI™ Br instrument, disconnect the power cable, and clean the LCD screen with a soft cloth lightly moistened with LCD cleansing detergent. Cleaning the screen with excessive force can damage the LCD the screen. Wipe the screen dry immediately.

If liquid spills on JuLI™ Br, turn off the power immediately and wipe dry.

JuLI™ Br does not need regular maintenance. To troubleshoot problems with JuLI™ Br, contact Technical Support (page 59).

## IMPORTANT

---

***Never disassemble or service JuLI™ Br by yourself.***

*Unauthorized repairs may damage JuLI™ Br or alter its functionality, which will void your warranty. Contact [sales@nanoentek.com](mailto:sales@nanoentek.com) or your local JuLI™ Br distributor to arrange for service.*

***Always wipe surfaces with ethanol-soaked paper towels.***

*Do not directly spray ethanol anywhere on JuLI™ Br.*

***Avoid exposing JuLI™ Br to UV light***

*UV light may degrade components, including plastic. Damage from UV exposure is not covered under the manufacturer's warranty.*



# Troubleshooting

## Installation

**JuLI™ Br does not power up**

- Check on/off switch on back side of unit.
- Check power source or contact your distributor.

**LCD screen is black**

- Touch the LCD screen with your finger .
- Check if power supply is connected and power switch is on.
- Reset the power button.
- Check the connection between scope and station.

**Focusing and monitoring menu are not activated**

**Get an error message during the connecting the 2<sup>nd</sup> scope unit**

- Connect connection cable to the 2<sup>nd</sup> scope unit after connecting to the 1<sup>st</sup> scope unit completely.

## Focus

**Focus knob or focus interface doesn't work**

- Check whether the focus interface is inactive or not.
- Move the focus knob to the opposite side.



## Monitoring

**Poor image (Too dark and too bright)**

- Re-optimize the brightness and exposure value.
- Reset the power button.

**Dirty image**

- Swipe the stage with cotton swab carefully.
- Eliminate any dust on culture dish.
- Check for and remove any condensation on the lid of the culture dish.

**Time-lapse images become dark and bright**

- **Warm up the instrument during 1 hour before monitoring.** (power should be on when warming up the instrument)
- **Cell culture flask should be wetted by the culture media before making movie.**
- Eliminate dust on a culture dish.
- Check for and remove any condensation on the lid of the culture dish.

# Troubleshooting

## Monitoring

**Time-lapse images become dark and bright**

- To prevent any problem such as shaking of culture dish or inflowing light, pay special attention when you open or close incubator door during monitoring.

**Can't set the interval**

- Please check the minimum interval (on page 18).

**Problem for saving movie file**

- Check the unused volume of the hard disk.

**Can not continue recording. Do you want to save the recording files?**

- Recording files are going to be saved as the last state before recording stopped.

## Data

**Can not play the movie properly**

- Create movie file with time lapse images using JuLI™ Br PC software program.

## Setting

**'JuLI Br Update' folder does not exist in the USB drive.**

- Download 'JuLI Br Update' folder on NanoEnTek website. ([www.nanoentek.com](http://www.nanoentek.com))

**The update files do not exist in the USB drive.**

- Check the files as below image. Then download 'JuLI Br Update' folder on NanoEnTek website. ([www.nanoentek.com](http://www.nanoentek.com))



JuLI\_II.exe



Profile.xml



TS500SDK.dll

# Troubleshooting

## PC software

### Movie doesn't play

- Load the full folder to PC software program, not just avi file.

### Can't create the dual movie using 2 different single monitoring data

- Check the interval and total time and match them with same conditions.

### Graph is not be shown on the movie tap

- Confluence is not measured on **Movie only mode**. However, movie can be edited using PC software program.

## ETC

### Fail to capture

- Connect scope unit with station unit using connection cable again.

### Movie doesn't play on windows media player

- Install the codec provided by JuLI Br USB drive or NanoEnTek website.

### Can't transmit the screen to external monitor through display port

- Check the resolution of the outer monitor. (resolution 1366 X 768 pixels)
- Make sure to turn off instrument before connecting.

# Warranty

NanoEnTek provides 1-year warranty service for defects of material and workmanship.

If any defect occurs in JuLI™, NanoEnTek provides free repair service for the defective parts at its discretion.

**The following defects, however, are specifically excluded:**

1. Defects caused by improper operation.
2. Repair or modification done by anyone other than NanoEnTek or an authorized agent.
3. Damage caused by substituting with alternative parts.
4. Use of fittings or spare parts supplied by anyone other than NanoEnTek.
5. Damage caused by accident or misuse.
6. Damage caused by disaster.
7. Corrosion caused by improper solvent or sample.

For your protection, JuLI™ Br units being returned must be insured against possible damage or loss. NanoEnTek cannot be responsible for damage incurred during shipment of a defective instrument. It is recommend that you save the original packing material in which the instrument was shipped. This warranty is limited to the replacement of defective products.

For any inquiry or request for repair service, contact [sales@nanoentek.com](mailto:sales@nanoentek.com) or your local distributor.

# Safety precautions

## Review and follow the safety instructions below :

- If water or other material enters the instrument, adaptor, or power inlet, disconnect the power cord and contact a service person. For operating environment, refer to Product Specifications (page 58).
- Do not touch the main plug or power cord with wet hands.
- Always ensure that the power supply input voltage matches the voltage available at your location.
- This instrument is air-cooled and its surfaces may become hot during operation. When installing leave a space of more than 10 cm (4 inches) around the instrument and do not place any objects between the instrument and the walls.
- Do not install an instrument on a slant or a place prone to vibrations, which induces the risk of malfunction or damage of the instrument.
- Never insert any objects into the air vents of the instrument as this could result in electrical shock, personal injury, and equipment damage.
- Plug the power cord firmly into the wall outlet and AC adapter.
- To avoid potential shock hazard, make sure that the power cord is properly grounded.
- Be sure to position the equipment such that it is easy to disconnect.
- Turn off the instrument before unplugging the power cord and/or moving the instrument.
- If the instrument is dropped or broken, disconnect the power cord and contact a service person. The warranty will be void in case of disassembly.
- Use only authorized accessories (adaptor, power cord, and USB drive).




## **Warning**

*Class A equipment is intended for use in an industrial environment.*

*In the documentation for the user, a statement shall be included drawing attention to the fact that there may be potential difficulties in ensuring electromagnetic compatibility in other environments, due to conducted as well as radiated disturbances.*

# Safety precautions

Review and follow the safety instructions below :

Symbol	Meaning
	Caution & Warning
	Protective earth (Ground)
	This instrument and consumables conforms to the Declaration of Conformity.
<b>FCC Compliance</b>	<p>This equipment has been tested and found to comply with the limits for a Class A digital device, pursuant to Part 15 of the FCC Rules. These limits are designed to provide reasonable protection against harmful interference when the equipment is operated in a commercial environment.</p> <p>This equipment generates, uses, and can radiate radio frequency energy and, if not installed and used in accordance with the instruction manual, may cause harmful interference to radio communications.</p> <p>Operation of this equipment in a residential area is likely to cause harmful interference in which the user will be required to correct the interference at his own expense.</p>

# Product specifications

## Environmental conditions

<b>Electrical input</b>	AC 100 - 240Va.c., 1.9A, 100W
<b>Frequency</b>	50 / 60 Hz
<b>Installation site</b>	Indoor use only
<b>Operating temperature</b>	5 - 40 °C
<b>Maximum relative humidity</b>	20 - 95 %

## Instrument specifications

<b>Cat. no.</b>	<i>Device</i> JULI-BR04 (Single set, 1 Scope & 1 Station) JULI-BRD04 (Dual set, 2 Scopes & 1 Station) JULI-BRSC (2 <sup>nd</sup> Scope) <i>Accessory</i> JULI-BRCM (Counting starter kit) JULI-BRTB (XY Stage)
<b>Magnification</b>	Objective 4X and digital zoom (~400X)
<b>Image resolution</b>	2560 x 1920 pixels (5M)
<b>Exported formats</b>	JPEG (image), AVI(movie), CSV(raw data)
<b>Display</b>	10.1" LCD touch screen
<b>Light source</b>	White LED
<b>Dimension &amp; weight</b>	Scope unit : 300 x 190 x 188 mm, 4kg Station unit : 282 x 285 x 160 mm, 3.2kg
<b>Storage</b>	320 GB Hard drive 4 GB USB drive

# Technical support

Visit the our Website at [www.nanoentek.com](http://www.nanoentek.com) for :



- Technical resources, including manuals, FAQs, etc.
- Technical support contact information
- Additional product information and special offers.

For more information or technical assistance, please call or email.

## **NanoEnTek Inc. (HQ)**

12F, 5, Digital-ro 26-gil, Guro-gu, Seoul, 08389, Korea

Tel : +82-2-6220-7940

Fax : +82-2-6220-7721

## **NanoEnTek USA Inc.**

5627 Stoneridge Drive Suite 304, Pleasanton, CA 94588, USA

Tel : +1-925-225-0108, +1-888-988-0108(Toll free)

Fax : +1-925-225-0109

## **Email**

[sales@nanoentek.com](mailto:sales@nanoentek.com)

## **Website**

[www.nanoentek.com](http://www.nanoentek.com)



All the materials in this user manual are protected by Korean and international copyright laws.

They cannot be reproduced, translated, published or distributed without the permission of the copyright owner.

### **JuLI™ Br User Manual**

Website : [www.nanoentek.com](http://www.nanoentek.com)

E-mail : [sales@nanoentek.com](mailto:sales@nanoentek.com)



**Manufactured by : NanoEnTek Inc.**

12F, 5, Digital-ro 26-gil, Guro-gu, Seoul, 08389, Korea

Tel : +82-2-6220-7940

Fax : +82-2-6220-7721

The information in this manual is described as accurately as possible.

The changes involved in firmware and software may be applied without notification.

Copyright ©2012 by NanoEnTek Inc.

All rights reserved. Published in Korea.

Documentation : NESMU-JUB-001E

Revision History : V.0.0 Date : Oct 2012

V.1.0 Date : Jan 2013

V.1.5 Date : May 2013

V.1.6 Date : Jan 2014

**V.2.0 Date : Nov 2015**

# Memo

# Memo

# Memo

# Memo