

 **TEREX® | BID-WELL**

# ROLLER PAVER

**2450**



Road/Flatwork



Bridge



Airport



Highway



Canals

**WORKS FOR YOU.**

# SPECIFICATIONS

## POWER UNIT

Standard	Honda iGX800
Gross horsepower	24.9 hp / 18.6 kW
Gross Torque	40.2 lb-ft / 54.5 Nm
Cooling	Air

## PAVING CARRIAGE

Standard:	Honda iGX800 (24.9 hp / 18.6 kW)
Finishing rollers	Dual 4 ft / 1.20 m
Strike off auger	Dual 8 in / 20 cm dia.
Rota-Vibe® drum	11.5 in / 29 cm

## MACHINE FRAME

All welded steel frame for maximum strength with minimum weight	
Truss depth	24 in / 61 cm
Standard machine length	30 ft / 9.1 m
Maximum standard length	60 ft / 18.3 m
Maximum leg span	57 ft / 17.4 m
Minimum paving width	8 ft / 2.4 m
Maximum paving width	56 ft / 17.1 m

## MACHINE LEGS

Standard heavy duty leg plates	
Leg diameter	4 in / 10.2 cm
Maximum leg extension range	46 in / 1.16 m

## FLUID CAPACITY

Power unit hydraulics	16.3 gal / 61.70 L
Power unit fuel	16 gal / 60.6 L
Carriage hydraulics	4.2 gal / 15.9 L
Carriage fuel	5.4 gal / 20.4 L



## PAVING CARRIAGE

The 2450 paving carriage performs the functions to help finish your concrete deck or slab to job specifications

- The augers forward of the carriage trim excess concrete
- The patented Rota-Vibe® system consolidates the top 2.75 in / 6.9 cm of concrete
- The paving rollers finish the concrete
- The drag pan system seals and textures the deck

## OPERATOR'S CONSOLE

The operator's console on the 2450 offers easy access to machine and carriage function controls. The operator has access to machine and carriage travel speed controls along with manual shift lever for carriage reversing. Most accessories can also be controlled from the operator's console including power crown, power leg widening, carriage/drag pan fogging.

## VERSATILITY

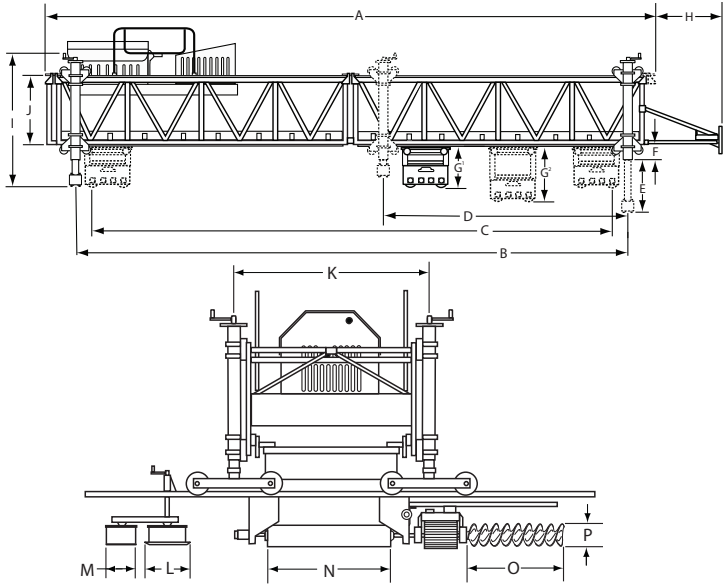
The 2450 is a versatile concrete paving machine. Not only is it capable of efficiently paving smaller bridges, but with the proper accessories can also be used to tackle smaller road paving and flatwork projects. With a multitude of available accessories, the 2450 Automatic Roller Paver can be equipped to meet number of job specifications.

## SETTING THE STANDARD

With paving widths ranging from 8 ft / 2.4m to 56 ft / 17.1m, the Terex Bid-Well 2450 roller paver is the smallest, lightest roller paver in the Terex Bid-Well paver line. It is ideal for smaller bridges, roads, overlays, and flatwork. This level of versatility is why Terex Bid-Well sets the standard in concrete paving and is just another way Terex Bid-Well, Works For You.



**STANDARD 2450 ROLLER PAVER**

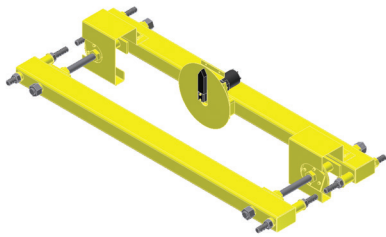


Dimensions			
A	30.5 ft / 9.30 m	I	103 in / 2.60 m
B	27.0 ft / 8.23 m	J	24 in / 61 cm
C	26.0 / 7.92 m	K	66.5 in / 1.69 m
D	12.25 ft / 3.73 m	L	33 in / 83 cm
E	46 in / 1.16 m	M	19 in / 48 cm
F	15 in / 38 cm	N	46 in / 1.16 m
G <sub>1</sub>   G <sub>2</sub> **	52 in / 1.32 m   47 in / 1.19 m	O	32 in / 81 cm
H	54 in / 1.37 m	P	8 in / 20 cm
Weights*			
Operating Weight	5,998 lbs / 2,720 kg		
Carriage	1,875 lbs / 850 kg		
Power Unit	1,175 lbs / 533 kg		
Bogie Wheel (qty 4)	495 lbs / 225 kg		

\*Standard machine is defined as a 30.5 ft / 9.3 m machine consisting of two 15 ft / 4.6 m truss sections, power unit, carriage, four standard 4 in / 10.2 cm legs and leg plates. Terex Bid-Well is not responsible for miscalculated wheel load weights based on the above information. For the most current wheel load weight calculators and machine weights please contact the Terex Bid-Well Applications Department at + 1605-987-2603. \*\* G<sub>1</sub> represents carriage retracted | G<sub>2</sub> represents carriage extended on cylinder for a stock machine.

**ACCESSORIES**

Terex Bid-Well offers a large selection of options and accessories for the 2450 model roller paver ranging from carriage foggers to weight distribution systems and skew bar kits for skewed paving. Shown are just a few of the options available for contractors to fit their 2450 to meet any job specification. For more information on available options and accessories for the 2450 model roller paver contact your Regional Sales Representative or the Terex Bid-Well Applications Department at +1 605-987-2603.



**POWER CROWN ADJUSTOR**



**4 IN / 10 CM SWING**



**4 WHEEL TRAVEL DOLLY**



# THE PROVEN TEREX BID-WELL 2450 ROLLER PAVER

**CONTACT YOUR REGIONAL SALES REPRESENTATIVE FOR MORE INFORMATION + 1 605-987-2603**

[terex.com/bid-well](https://www.terex.com/bid-well)

Effective Date: October 2021. Product specifications and prices are subject to change without notice or obligation. The photographs and/or drawings in this document are for illustrative purposes only. Refer to the appropriate Operator's Manual for instructions on the proper use of this equipment. Failure to follow the appropriate Operator's Manual when using our equipment or to otherwise act irresponsibly may result in serious injury or death. The only warranty applicable to our equipment is the standard written warranty applicable to the particular product and sale and Terex® makes no other warranty, express or implied. Products and services listed may be trademarks, service marks or trade-names of Terex® Corporation and/or its subsidiaries in the USA and other countries. All rights are reserved. Terex® is a registered trademark of Terex® Corporation in the USA and many other countries. Copyright 2021 Terex® Corporation.

Terex Bid-Well PO Box 97, Canton, SD 57013 USA  
Tel +1 605-987-2603

