

W31 Indoor/Outdoor Lockable Wall Box – 24 Fibers – SC Adaptors



Description

This Lockable IP65 distribution box is supplied loaded or unloaded and offers the ability to terminate 24 fibers housed in a strong robust ABS enclosure for indoor and outdoor applications. An internal detachable tray provides a neat and tidy solution for housing 24 SC simplex connections and splices. The box has 24 patch cord exit points and up to 2 cable entry points which maintain the IP65 rating. Integrated cable tie points are included to secure incoming cables. A locking feature for the door adds extra security when positioned in un-secure areas.

Features and Benefits

- IP 65 Rating for external use
- Integrated cable tie points for securing incoming cable
- Removable splice tray for easy installation
- Integrated bend radius protection
- Cable entry point allows unbroken cable to be installed(loop)
- Supplied with 24 heatshrink splice protectors
- Supplied with wall fixings and tie wraps
- Lockable door for added security
- Up to 24 splice & SC connection points
- Accepts loose tube, distribution and pre-terminated cables
- Sealing glands for up to 24 exiting cables + 2 incoming cable
- Removable door for ease of installation
- Supplied with transit tubing
- ROHS, REACH & SvHC materials compliant



Applications

- Data centers, premise installations, telecommunication networks
- Data communication and telecommunication networks
- Ethernet, Fiber Channel, ATM, LAN, MAN and WAN
- Indoor/outdoor applications

Specifications

ELEMENT	CHARACTERISTIC
Height (mm)	340
Width (mm)	270
Depth (mm)	110
Net weight (kg)	1.8
Suitable for adapter type	SC Simplex
Number of ports	24
Cable entry	2
Material	ABS
Colour	Grey RAL 7035
	-40 to +60
Designed in accordance with	TIA/EIA 568.C, ISO/IEC 11801, EN50173, IEC60304, IEC61754,
Materials compliant to	RoHS, Reach/SVHC

Ordering Information

Code	Fibre Type	Code	Fibre Count	Code	End A	Code
F	S SM Adaptors	WC	24 24F	DX	A LC	X-31AD
	M MM Adaptors				B LCA	
	V MM EV adaptors				D SC	
					E SCA	
					L E2	
					M E2A	

PART NUMBER	DESCRIPTION	LEGACY PART NUMBER
FMWC24DXDX-31AD	IP Rated Wall Box Grey 7035 IP65 24 Port (SCS/LCD) 24F SC MM (Adaptors)	W31SCM24
FSWC24DXDX-31AD	IP Rated Wall Box Grey 7035 IP65 24 Port (SCS/LCD) 24F SC SM (Adaptors)	W31SCS24
FSWC24DXEX-31AD	IP Rated Wall Box Grey 7035 IP65 24 Port (SCS/LCD) 24F SCA SM (Adaptors)	W31SCA24
FMWC24DXLX-31AD	IP Rated Wall Box Grey 7035 IP65 24 Port (SCS/LCD) 24F E2 MM (Adaptors)	W31E2M24
FSWC24DXLX-31AD	IP Rated Wall Box Grey 7035 IP65 24 Port (SCS/LCD) 24F E2 SM (Adaptors)	W31E2S24
FSWC24DXMX-31AD	IP Rated Wall Box Grey 7035 IP65 24 Port (SCS/LCD) 24F E2A SM (Adaptors)	W31E2A24



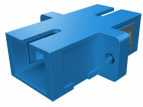
PART NUMBER	DESCRIPTION	LEGACY PART NUMBER
FMWC24DXAX-31AD	IP Rated Wall Box Grey 7035 IP65 24 Port (SCS/LCD) 24F LC MM (Duplex Adaptors)	W31LCM12
FVWC24DXAX-31AD	IP Rated Wall Box Grey 7035 IP65 24 Port (SCS/LCD) 24F LC MM EV (Duplex Adaptors)	W31LCV12
FSWC24DXAX-31AD	IP Rated Wall Box Grey 7035 IP65 24 Port (SCS/LCD) 24F LC SM (Duplex Adaptors)	W31LCS12
FSWC24DXBX-31AD	IP Rated Wall Box Grey 7035 IP65 24 Port (SCS/LCD) 24F LCA SM (Duplex Adaptors)	W31LCA12

Additional Images

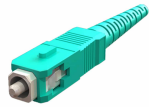


Related Products

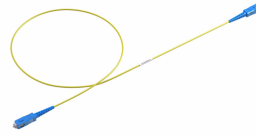




SC Adapters



SC Connector



SM Simplex/Duplex Enhanced Patch Cord



FCP2 Fiber Cleaning Kit for SC/ST/FC/LC



One-Click® Cleaner SC/ST/FC



FOCIS Flex Fiber Scope

