

Belt Conveyors

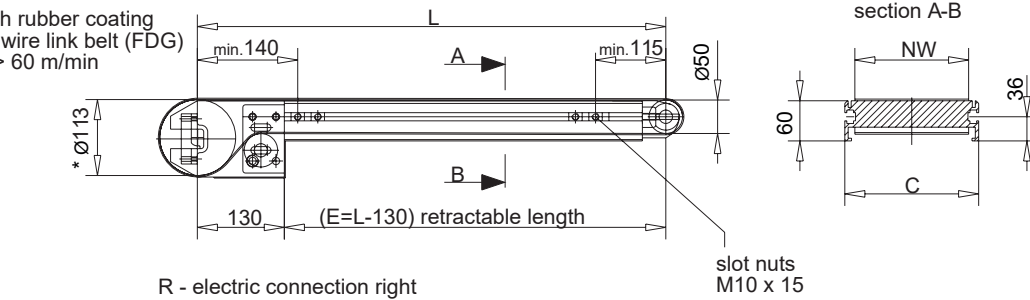
Type 398 - height 30 mm

Type 397 - height 40 mm

Type 360 - height 60 mm

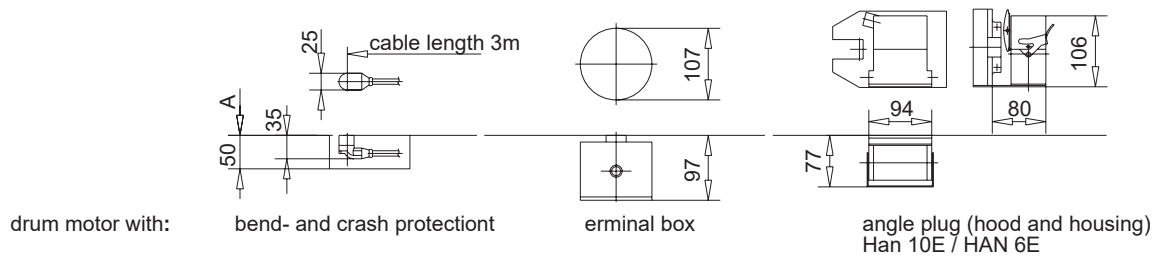
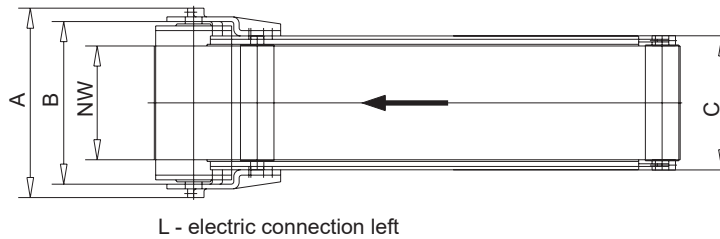
Type 380 - height 100 mm

* Ø 123 with rubber coating
when flat wire link belt (FDG)
and/or $v > 60$ m/min



belt speed:

- $v = 15$ m/min (0,15 kW - 0,7A - 400V)
- $v = 30$ m/min (0,225 kW - 0,76A - 400V)
- $v =$ special



measure table [mm]	NW	50	100	150	200	250	300	350	400	500	600	700	800	900	1000
A	313	313	313	313	363	413	463	513	613	713	813	913	1031	1113	
B	273	273	273	227	323	373	423	473	573	673	773	873	973	1073	
C	80	130	180	230	280	330	380	430	530	630	730	830	930	1030	
L max	6000	6000	6000	6000	6000	6000	6000	6000	6000	6000	6000	6000	6000	6000	
L min	400	400	400	400	400	450	500	600	750	900	1050	1200	1350	1500	

Type code:



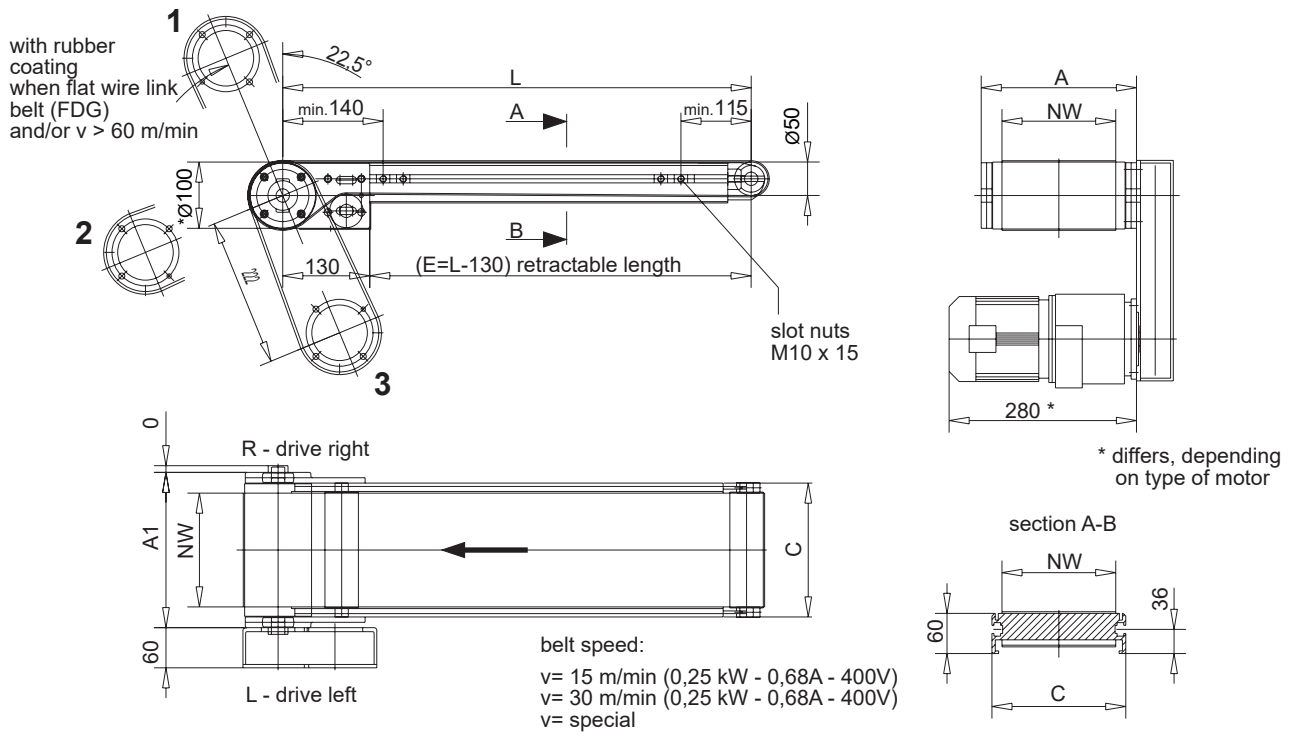
- Permanent magnetic
- Non magnetic
- Nominal width (NW)
- Length [50 mm steps]
- Electric connection
- Drum motor with
- Belt quality
- Lateral guide plates
- Stripper
- Belt run control
- Belt speed
- Operating voltage

- 0100
- 0150
- acc. to table
- acc. to table
- L
- R
- bend protection
- terminal box
- angle plug
- knopped coating
- PVC coating
- PU-special belt
- Keram (high cut resistant)
- flat wire link belt (FDG)
- special belt type
- without
- h = 100 mm
- h = 50 mm
- h = 30 mm
- special design
- without
- including
- without
- including
- 15 m/min
- 30 m/min
- special (max....m/min)

- 0
- 3
- 0
- 1
- 2
- 0
- 1
- 2
- 4
- 5
- 6
- 0
- 1
- 2
- 3
- 4
- 0
- 1
- 0
- 1
- 0
- 1
- 2

VP Hz h

please specify
Standard: 230/400 V - 50 Hz - 3 Ph



measure table [mm]	NW	50	100	150	200	250	300	350	400	500	600	700	800	900	1000
	A	112	162	212	262	312	362	412	462	562	662	762	862	962	1062
	C	80	130	180	230	280	330	380	430	530	630	730	830	930	1030
	L max	600	6000	6000	6000	6000	6000	6000	6000	6000	6000	6000	6000	6000	6000
L min	400	400	400	400	400	450	500	600	750	900	1050	1200	1350	1500	

Type code:



Permanent magnetic
Non magnetic

- 0100
- 0150

Nominal width (NW)
Length [50 mm steps]

- acc. to table
- acc. to table

Drive arrangement

- L1
- L2
- L3
- R1
- R2
- R3

Gear motor
Frequ. contr. gear motor

- P= 0,25 kW
- P= 0,25 kW

Belt quality

- knopped coating
- PVC coating
- PU-special belt
- Keram (high cut resistant)
- flat wire link belt (FDG)
- special belt type

Lateral guide plates

- without
- h = 100 mm
- h = 50 mm
- h = 30 mm
- special design

Stripper

- without
- including

Belt run control

- without
- including

Belt speed

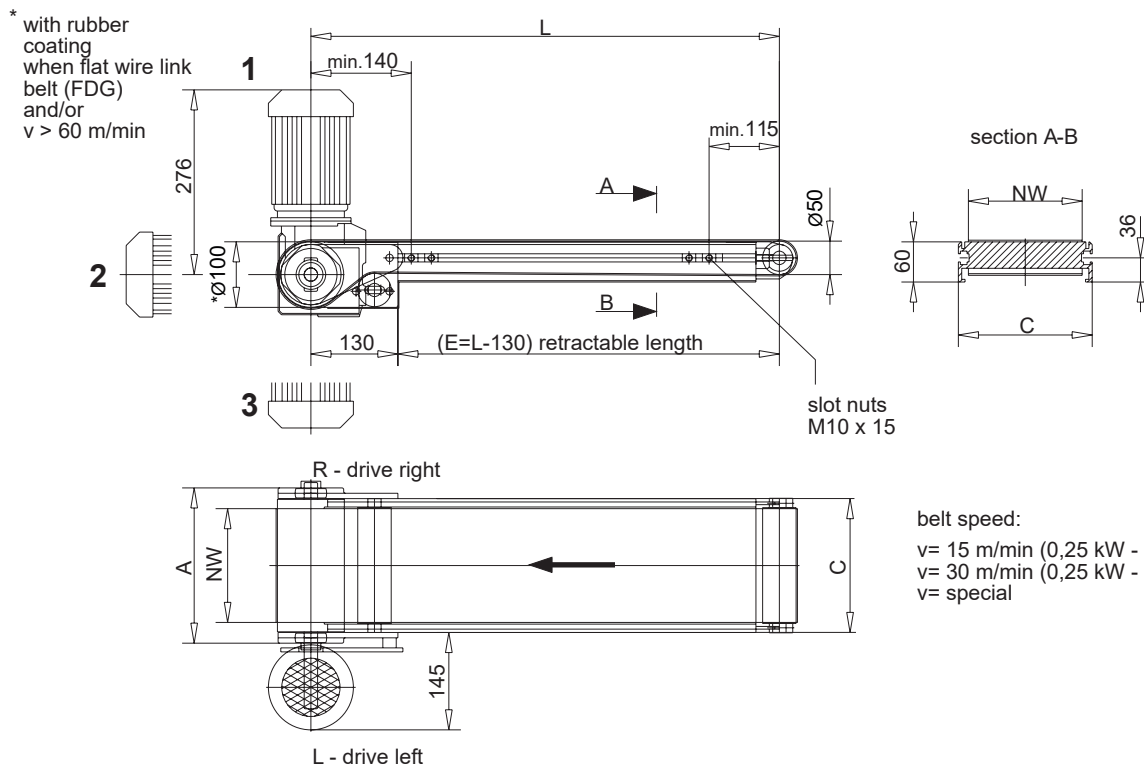
- 15 m/min
- 30 m/min
- special (max....m/min)

Operating voltage

-

VP Hz h

please specify
Standard: 230/400 V - 50 Hz - 3 Ph



measure table [mm]	NW	50	100	150	200	250	300	350	400	500	600	700	800	900	1000
A	112	162	212	262	312	362	412	462	562	662	762	862	962	1062	
C	80	130	180	230	280	330	380	430	530	630	730	830	930	1030	
L max	600	6000	6000	6000	6000	6000	6000	6000	6000	6000	6000	6000	6000	6000	6000
L min	400	400	400	400	400	450	500	600	750	900	1050	1200	1350	1500	

Type code:

363

Permanent magnetic
Non magnetic
Nominal width (NW)
Length [50 mm steps]
Drive arrangement

- 0100
- 0150
- acc. to table
- acc. to table
- L1
- L2
- L3
- R1
- R2
- R3

0
1
2
3
4
5

Gear motor
Frequ. contr. Gear motor

- P= 0,25 kW
- P= 0,25 kW

0
1

Belt quality

- knopped coating
- PVC coating
- PU-special belt
- Keram (high cut resistant)
- Keram (high cut resistant)
- special belt type

0
1
2
4
5
6

Lateral guide plates

- without
- h = 100 mm
- h = 50 mm
- h = 30 mm
- h = 30 mm

0
1
2
3
4

Stripper

- without
- including

0
1

Belt run control

- without
- including

0
1

Belt speed

- 15 m/min
- 30 m/min
- special (max....m/min)

0
1
2

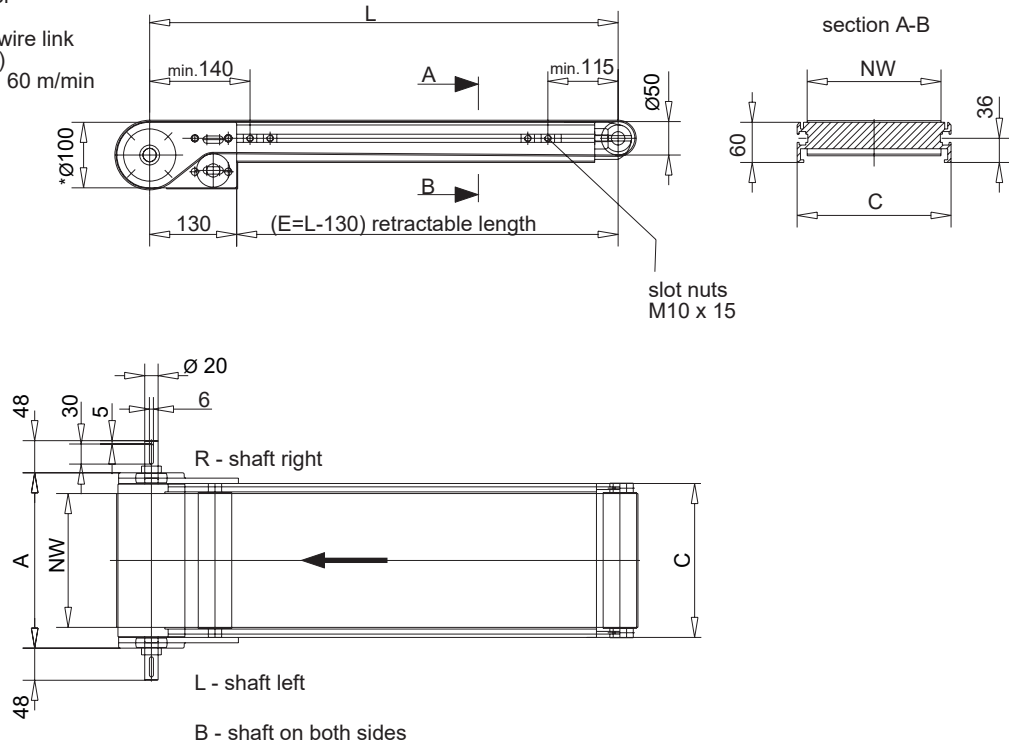
Operating voltage

-

VP Hz h

please specify
Standard: 230/400 V - 50 Hz - 3 Ph

* with rubber coating when flat wire link belt (FDG) and/or $v > 60$ m/min



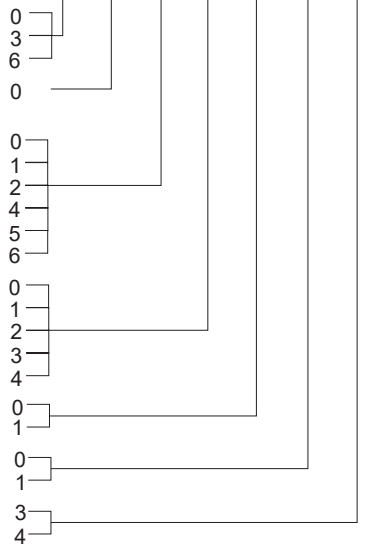
measure table [mm]	NW	50	100	150	200	250	300	350	400	500	600	700	800	900	1000
A	112	162	212	262	312	362	412	462	562	662	762	862	962	1062	
C	80	130	180	230	280	330	380	430	530	630	730	830	930	1030	
L max	600	6000	6000	6000	6000	6000	6000	6000	6000	6000	6000	6000	6000	6000	6000
L min	400	400	400	400	400	450	500	600	750	900	1050	1200	1350	1500	

Type code:

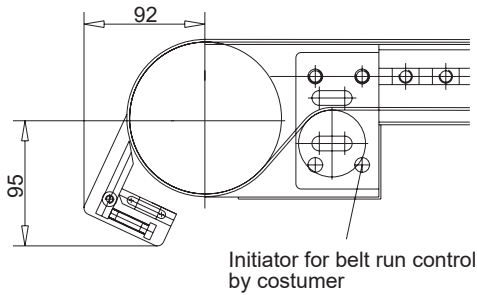
366 [] [] [] [] **0** [] [] [] [] []

- Permanent magnetic
- Non magnetic
- Nominal width (NW)
- Length [50 mm steps]
- Shaft arrangement
- Gear motor
- Belt quality
- Lateral guide plates
- Stripper
- Belt run control
- Belt speed

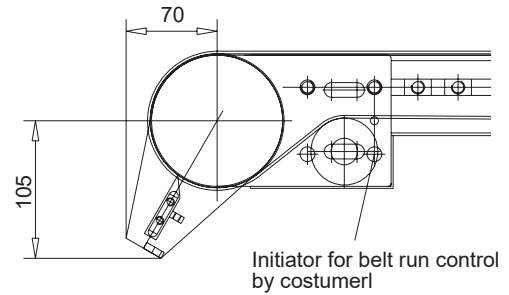
- 0100
- 0150
- acc. to table
- acc. to table
- L
- R
- B = both sides
- without
- knopped coating
- PVC coating
- PU-special belt
- Keram (high cut resistant)
- flat wire link belt (FDG)
- special belt type
- without
- h = 100 mm
- h = 50 mm
- h = 30 mm
- special design
- without
- including
- without
- including
- < 60 m/min
- > 60 m/min



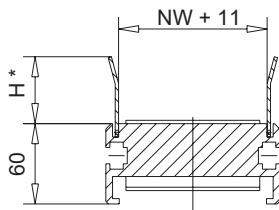
**Stripper for TYPE 360
Ø113 - Ø123**



**Stripper for TYPE 362-366
Ø100**

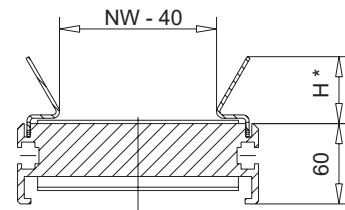


Lateral guide plates for NW 50 and 100

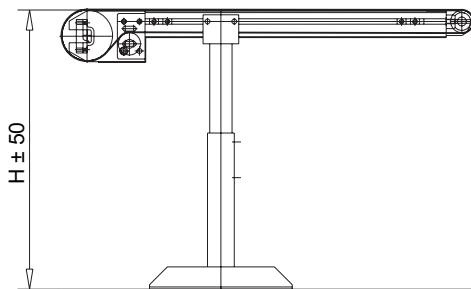


* H= 30 / 50 / 100

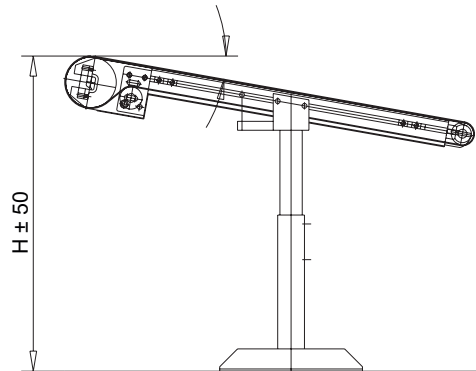
Lateral guide plates for NW 150 and wider



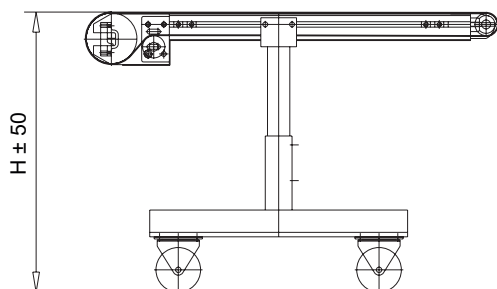
* H= 30 / 50 / 100



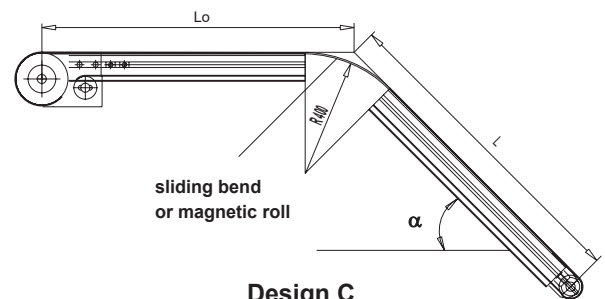
Support Type 1



Support Type 2



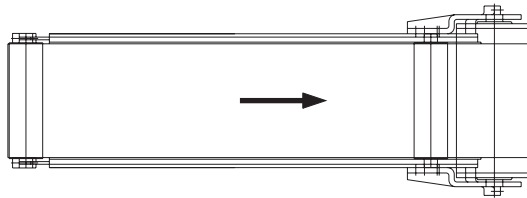
Support Type 3



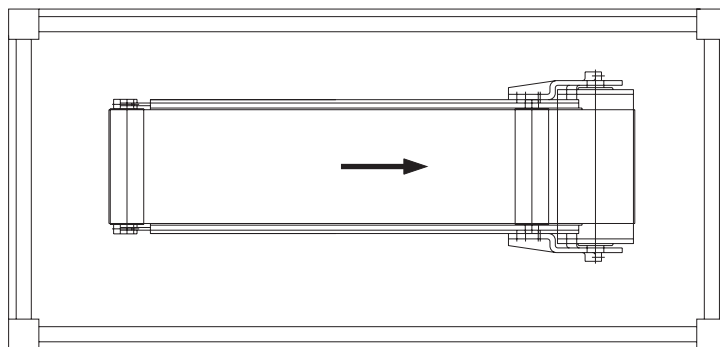
Design C

Revision I [dimensions and technical modifications subject to change]

Picture **1** system free accessible



Picture **2** system fully enclosed



Picture **3** system partially enclosed

