



BVS CA-GT1-xxxxxx-(1)(2)(3)(4)(5)(6)-001

BVS CA-GT1-xxxxxx-(1)(2)(3)(4)(5)(6)-001 /
mvBlueCOUGAR-XT
10GigE Vision industrial camera

xxxxxx Model
See table below

(1) Handling
1 = standard handling

(2) Lensholder
1 = C-Mount, Type2, with high durability and factory-set
backfocus, fixed square filter

(3) Filter
0 = without filter
1 = IR-Cut
2 = glass filter
More filters on request

(4) Housing
1 = standard housing, black with logo, aluminium
F = standard housing black with fan, aluminium

(5) I/O
4 = opto isolated IN, high side switch Out, M12 connectors

(6) Software
0 = none

型号	分辨率	帧率*	感光芯片	像元尺寸	消耗功率**
BVS CA-GT1-					
0051BG/C	5.1 MP (2464 x 2064)	221.7/221.7	IMX537 (1/1.8", GS, CMOS)	2.74 μm	18.7 W
0081ZG/C	8.1 MP (2848 x 2848)	147.4/147.4	IMX536 (2/3", GS, CMOS)	2.74 μm	19.2 W
0124BG/C	12.4 MP (4128 x 3008)	101.8/99.5	IMX535 (1/1.1", GS, CMOS)	2.74 μm	19.0 W
0162ZG/C	16.2 MP (5328 x 3040)	81.1/76.3	IMX532 (1.1", GS, CMOS)	2.74 μm	18.5 W
0204ZG/C	20.4 MP (4512 x 4512)	64.3/60.7	IMX531 (1.1", GS, CMOS)	2.74 μm	18.5 W
0246ZG/C	24.6 MP (5328 x 4608)	54.3/50.3	IMX530 (1.2", GS, CMOS)	2.74 μm	19.5 W

G/C = 黑白和彩色都有

GS = 全局快门

RS = 卷帘快门

* = 连发模式

** = 典型值

功能

Binning	水平和垂直
Decimation	水平和垂直
Trigger Modi	Free run Hardware trigger Software trigger
图片格式	Mono8...Mono16 Bayer8...Bayer16 *
数据存储容量	2048 MB
曝光时间	10 µs...20 s *
过滤器	红外截止滤镜, 其他滤镜请垂询

接口

接口	Gigabit Ethernet, POE 10G / 5G / 2.5G / 1G Base-T以太网 PoE+ 4x双向: 输入 (未隔离) / 输出 (高端或开路) RS232
数字输入端	4x PNP, 电隔离
数字输出端	4x PNP 高边输出

机械参数

重量	480 g (无风扇)
镜头接口	C型接口, 其他型号请垂询

材质

外壳材料	铝, 粉末涂层
------	---------

备注

供货范围中不包括: 镜头、照明、连接电缆、电源

*有关准确值, 请参阅手册

更多有关MTTF或B10d的信息请参见MTTF / B10d证书

所给出的MTTF / B10d数值并非约束性的购买及/或产品寿命承诺; 这些数值只是经验值, 对于产品属性没有约束力。这些数值说明也同样不会延长或以任何形式影响缺陷索赔的时效期限..

环境条件

EN 60068-2-27, 冲击	100 G, 半正弦, 正1000, 负1000, X, Y, Z
EN 60068-2-6, 振动	15 G, 10 - 500 Hz, 5h X, Y, Z
存储温度	-20...60 °C
环境温度	0...45 °C
相对空气湿度	20...80%
防护等级	IP67, (无风扇)

电气参数

Current draw peak	1.5 A
余波, 最大 (Ue的百分比)	5 %
工作电压Ub	16...28 VDC or PoE+ (IEEE 802.3at)

电气连接

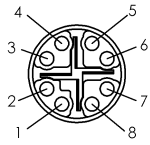
反极性保护	是
接口1	10GigE总线: M12x1-插口, 8-针, X-编码
接口2	电源/IO: M12x1-插头, 12-针, A-编码
接口3	多用途IO: M8x1-插口, 8-针, A-编码
短路保护	是

通用性参数

标准	EMVA 1288 GigE Vision GenICam IEEE 802.3at PTP IEEE1588 (主控设备/副控设备)
----	--

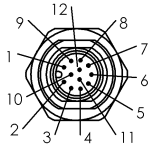
Connector Diagramm

10GigE-Bus (M12)



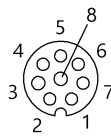
PIN 1: BI_DA+
PIN 2: BI_DA-
PIN 3: BI_DB+
PIN 4: BI_DB-
PIN 5: BI_DD+
PIN 6: BI_DD-
PIN 7: BI_DC-
PIN 8: BI_DC+

Power / IO (M12)



PIN 1: PWR_IN
PIN 2 : GND
PIN 3: DigOut3
PIN 4: Opto DigIn0
PIN 5: DigOut2
PIN 6: DigOut0
PIN 7: Opto DigIn_GND
PIN 8: Opto DigIn2
PIN 9: Opto DigIn3
PIN10: DigOut_PWR_IN
PIN11: Opto DigIn1
PIN12: DigOut1

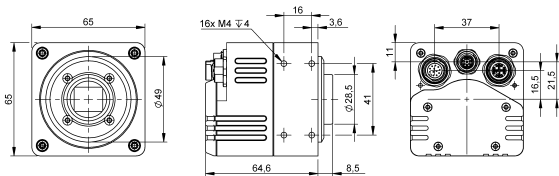
Multipurpose IO (M8)



PIN 1: Bidirectional I/O0
PIN 2: Bidirectional I/O1
PIN 3: RS232 RX
PIN 4: RS232 TX
PIN 5: Bidirectional I/O2
PIN 6: Bidirectional I/O3
PIN 7 : GND
PIN 8: PWR_OUT

Product View

BVS CA-GT1-xxxxxx-x1x14x



BVS CA-GT1-xxxxxx-x1xF4x

