

Description

The Type 20004 boost pump is mounted within the Type 20005 canister located in the outboard and inboard main fuel tanks. The pump incorporates a mixed flow impeller driven by an internal, fuel flooded, AC motor. The design philosophy of the pumps is based around the highly reliable Boeing 777 fuel pumps, with added features to improve reliability, maintainability and to meet the latest fuel system safety requirements issued by the FAA.

Pump performance is maintained over a range of altitudes and temperatures. The unit has an excellent dry running capability and incorporates a thermal device which interrupts the AC supply to the motor should overheating occur.

The reliability and long life of the unit are enhanced by the fully flooded operation of the AC motor which facilitates cooling and lubrication.

There are eight pumps fitted to each Boeing 747-400 aircraft.

Design Features

- High MTBF
- Easily fitted or removed (without draining fuel tank)
- Suitable for use with hot fuel
- Dry run capability
- Fuel cooled and lubricated bearings
- Three phase induction motor
- Reliable, maintenance free operation
- Explosion proof and thermally protected
- Canister mounted

Application

- Boeing 747

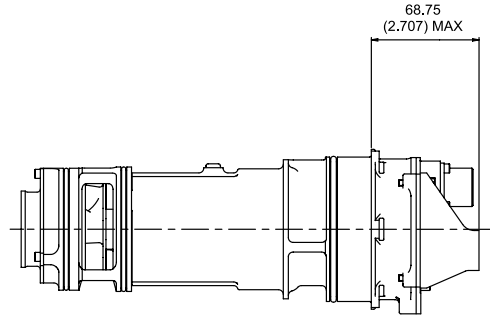


Powering Business Worldwide

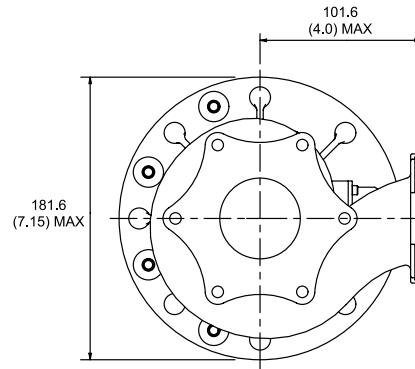
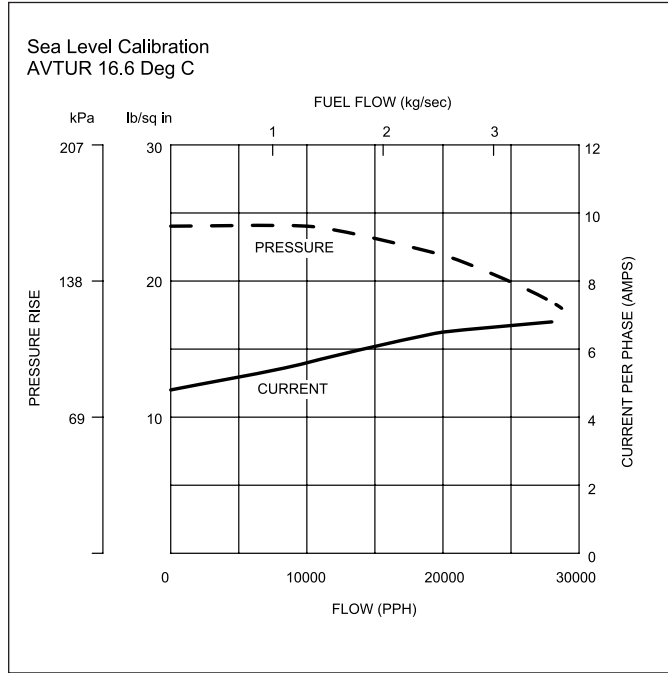
Specification

Pump (20004) Part No. 568-1-30685
 Canister (20005) Part No. 568-1-30690
 Power Supply 200V 400Hz 3 Phase
 Flow Rate 3.5kg/sec (28,000lb/hr)
 Delivery Pressure 165/124kPa (24/18psig)
 Motor Speed 8,000rpm
 Current Consumption 7.8A max
 Weight 4.2kg (9.3lb)

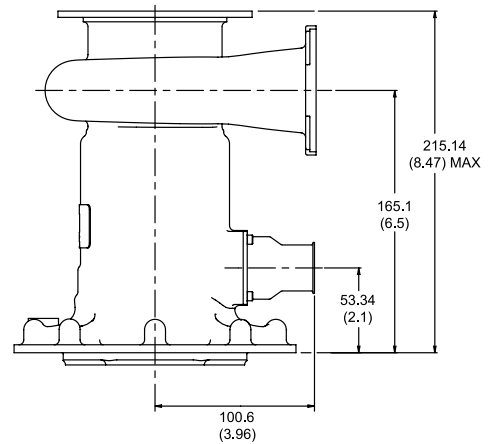
Pump Type 20004



Typical Performance Curves



Canister Type 20005



Overall Dimensions
 shown in mm (in)

Eaton Aerospace Limited
 Fuel & Motion Control Systems Division
 Abbey Park, Southampton Road
 Titchfield, Fareham
 Hampshire, PO14 4QA
 UK
 Tel: +44 (0)1329 853000
 Fax: +44 (0)1329 853797
 www.eaton.com/aerospace

Copyright © 2013 Eaton
 All Rights Reserved
 Form No. DS600-6A
 July 2013