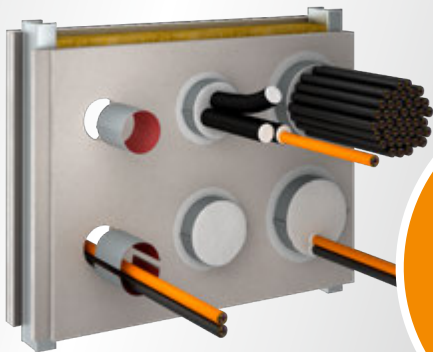
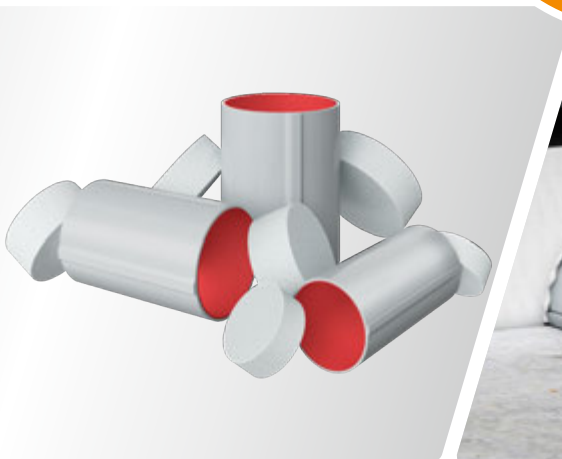




Protect your values.



NEW!
Now also in
Ø 60 mm and
Ø 90 mm



PYRO-SAFE® CT Cable Tube and PYRO-SAFE® CT ML Cable Tube

The simple penetration sealing system with the “click”

Penetration Seals – for Safe Separation of Fire Compartments

The PYRO-SAFE® CT Cable Tube is particularly suitable for simple penetration sealing electrical installations and HVAC split line combinations, e.g. in core holes. It can be installed in both light partition walls and solid walls and floors.

PYRO-SAFE® CT Cable Tubes can be 100 % occupied and arranged in groups.

The two plastic half-shells are connected to each other with a click lock so that installation can be carried out even around existing lines. The annular gap around the PYRO-SAFE® CT Cable Tube can be sealed with mortar, gypsum or mineral wool with a seal made from PYRO-SAFE® FLAMMOTECT-A, for example.

Subsequent occupancy can be implemented at any time without major effort and with simple tools.

In the event of fire, the intumescent inlay foams up with high expansion pressure and closes all cavities. The soft foam plugs with ablative sealing attached at both sides prevent smoke penetration.

Subsequent Installation
around Existing
Installations



Suitable for 68 mm
Socket Holes and
100 mm Core Holes



The svt Product Guide

Find the right fire protection solution quickly and directly online.

With the svt Product Guide, we provide you with a practical tool for simplifying the complex decision-making process relating to passive structural fire protection and guide you step by step to the right fire protection system for your individual requirements.

You can find the svt Product Guide at: www.svt-global.com/productguide





Penetration Seal in System Floors

The PYRO-SAFE® CT ML Cable Tube was developed for sealing in system floors. It consists of just one plastic half-shell. The intumescent inlay is extended at one side with a tab so that it can be placed beneath the penetrations.

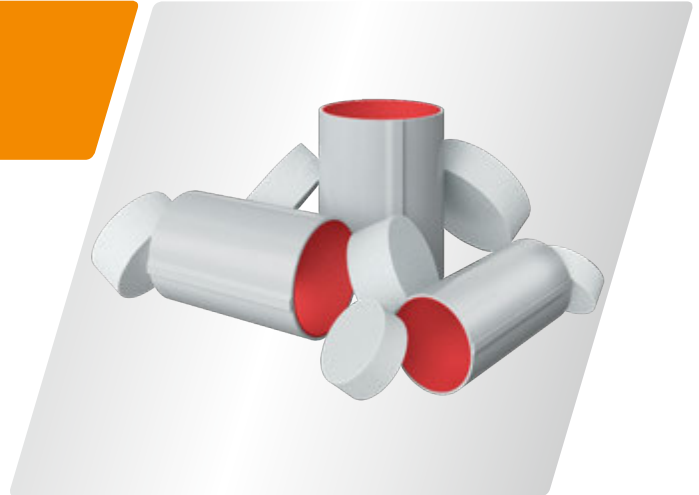
The PYRO-SAFE® CT ML Cable Tube can also be 100 % occupied, and multiple tubes can be arranged at zero distance from each other. Installation can be carried out at one side and is also permitted beneath fire protection doors. No requirement is made of the fire resistance duration of the system floor, the material just has to be non-combustible.



PYRO-SAFE® CT Cable Tube

PYRO-SAFE® CT Cable Tubes are available in three diameters and lengths. The CTs have an intumescent inlay on the inside. The two plastic half-shells are connected to one another by a click lock.

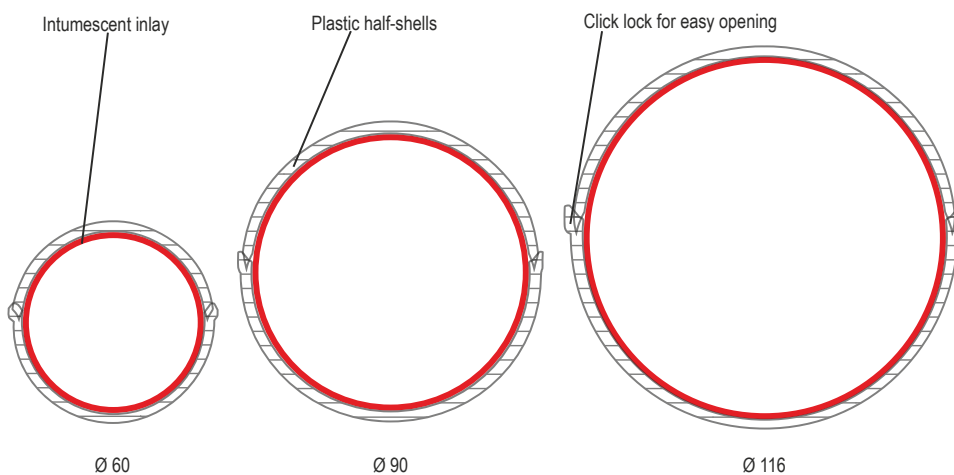
Product Data and Design Variants



Product Data

Certificate of usability	ETA-16/0016
Colour	Grey, inlay red
Material	Half shells made from PVC, intumescent inlay, closure at both sides with two soft foam plugs
Half-shell lock	Click lock
Design variants	Ø 60 / length 150 NEW! Ø 90 / length 150 NEW! Ø 90 / length 200 NEW! Ø 90 / length 300 NEW! Ø 116 / length 150 Ø 116 / length 200 Ø 116 / length 300

All measurements in mm





System Data and Configuration

Fire Resistance Class:
Up to max. EI 120 per EN-13501-2

System Data

Areas of use	Light partition wall, solid wall, floor	
	Wall	Floor
Component thickness	≥ 100	≥ 125
Penetration seal thickness	≥ 150	≥ 150
Penetration seal size	1200 x 2000	640 x ∞

All measurements in mm

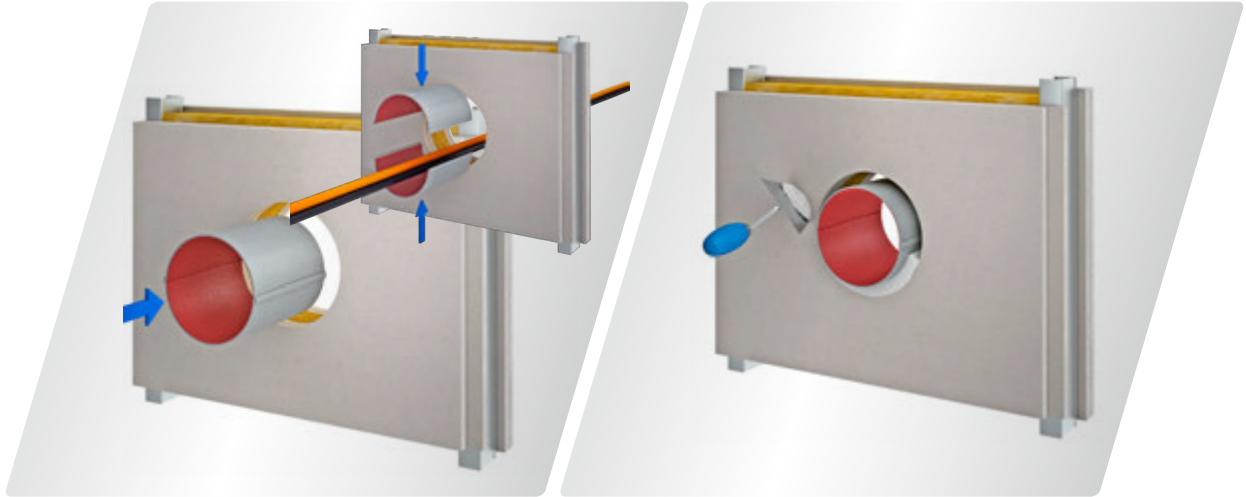
Configuration

Media lines			Diameter (max.)	Length 150 mm				Length 200 mm		Length 300 mm	
				Fire resistance class (max.)							
				Wall	Floor	Wall	Floor	Wall	Floor	Wall	Floor
	Cables		≤ 21	EI 90	EI 120	EI 120	EI 120	EI 120	EI 120	EI 120	EI 120
			≤ 50	–	EI 90	–	EI 90	EI 90	EI 90	EI 120	EI 120
			≤ 80	–	–	–	–	EI 90	EI 60	EI 60	EI 60
	Cable bundles		≤ 100% / 21	EI 90	EI 120	EI 120	EI 120	EI 120	EI 120	EI 120	EI 120
	EIC	Single	≤ 32 / 14	EI 90 U/U	EI 90 U/U	EI 120 U/U	EI 90 U/U	EI 120 U/U	EI 120 U/U	EI 120 U/U	EI 120 U/U
			≤ 32 / 21	–	–	EI 120 U/U	–	EI 120 U/U	EI 120 U/U	EI 120 U/U	EI 120 U/U
			≤ 63 / 21	–	–	–	–	–	EI 120 U/U	EI 120 U/U	EI 120 U/U
	EIC	Bundle	≤ 100% / 32 / 21	–	–	EI 120 U/U	–	EI 120 U/U	EI 120 U/U	EI 120 U/U	
	PE lines, "speed pipes"		max. 24 pcs., pipe outer ≤ 7 max. 7 pcs., pipe outer ≤ 10 max. 5 pcs., pipe outer ≤ 12	–	EI 120 U/U	–	EI 120 U/U	–	EI 120 U/U	EI 120 U/U	
	HVAC split line combinations		✓	EI 90 U/U	EI 120 U/U	EI 90 U/U	EI 120 U/U	EI 90 U/U	EI 120 U/U	EI 120 U/U	
	Combustible pipes		≤ 32	–	–	–	–	EI 120 U/U	–	–	

Measurements in mm

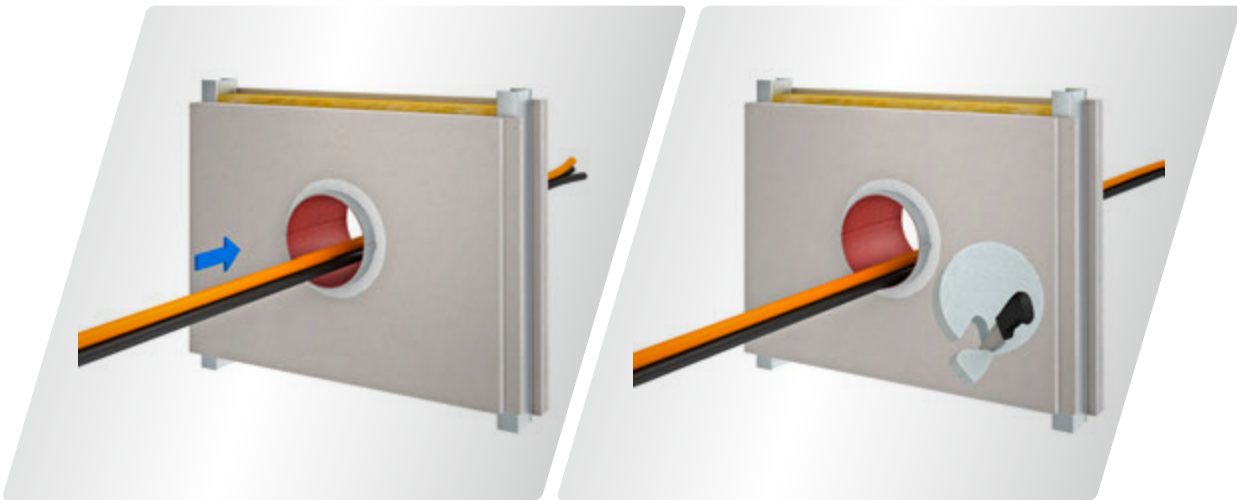
The Installation Steps at a Glance

The installation steps of the PYRO-SAFE® CT Cable Tubes for light partition walls are shown in the following.



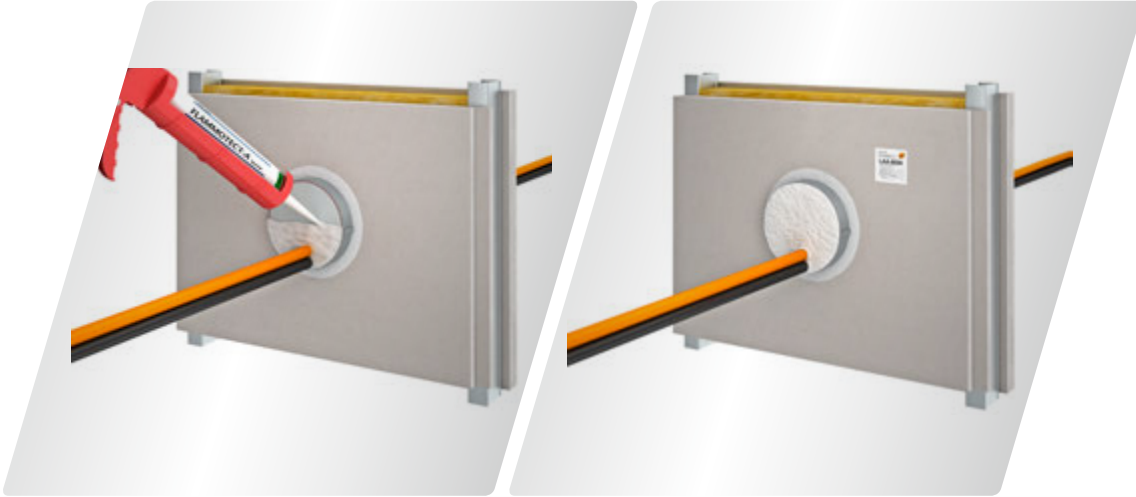
1. Insert the PYRO-SAFE® CT Cable Tube in the middle with the same overhang on each side or place the half-shells around the installations and combine them by clicking them together.

2. Seal the annular gap with PYRO-SAFE® NOVASIT BM / K2 or PYRO-SAFE® GFM. (25 mm deep on each side)



3. Carry out the installation.

4. Cut the plugs to the appropriate shape and adjust at both sides.



5. Seal the plugs with PYRO-SAFE®
FLAMMOTECT-A.

6. If necessary, mark the seal.



PYRO-SAFE® CT ML Cable Tube

The PYRO-SAFE® CT ML Cable Tube consists of just one plastic half-shell, and the intumescent inlay is extended at one side with a tab so that it can be placed beneath the penetrations. Installation can be carried out at one side, and is also permitted beneath fire protection doors.

Product/System Data and Configuration

Fire Resistance Class:
Up to max. EI 120 per EN-13501-2






Product and System Data

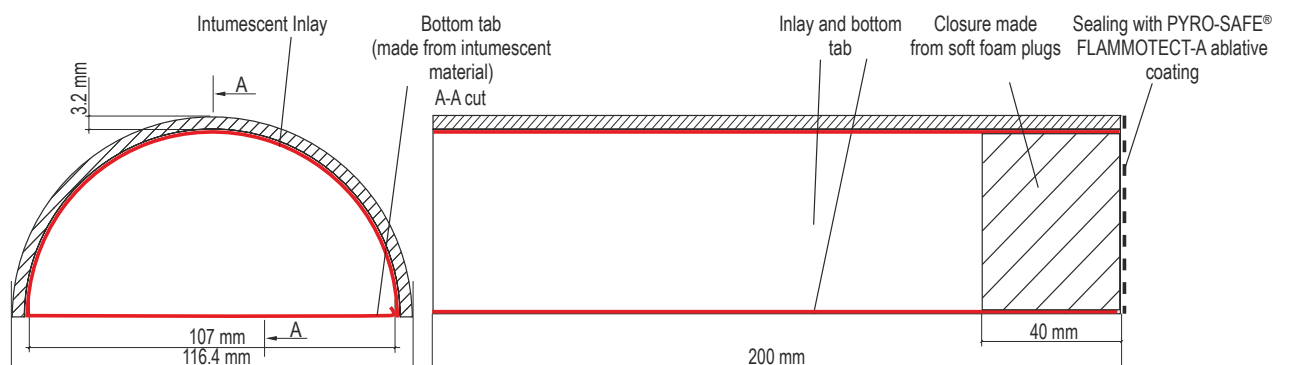
Certificate of usability	ETA-16/0016
Colour	Grey, inlay red
Material	Half shells made from PVC, intumescent inlay, closure with a soft foam stopper
Design variants	Ø 116 / length 200
Area of use	Light partition wall, solid wall
Component thickness	≥ 100
Penetration seal thickness	≥ 100 / ≥ 150 (soft / mortar penetration sealing system)
Maximum seal size	2000 x 150

All measurements in mm

Configuration

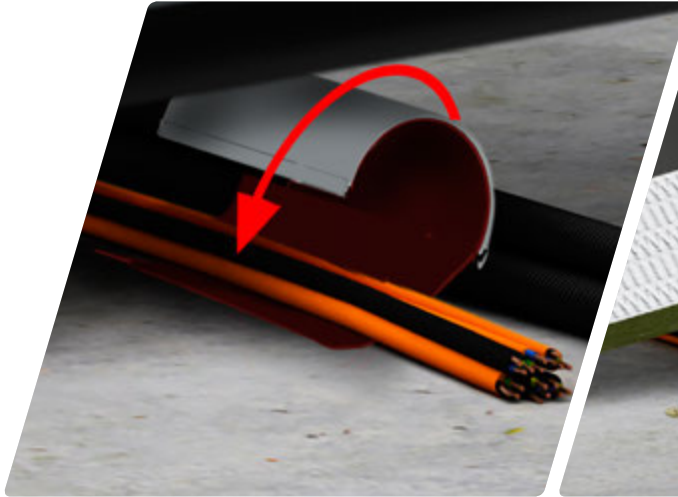
Media lines		Diameter (max.)	Fire resistance class (max.)
	Cables	≤ 21	EI 120
		≤ 50	EI 90
Cable bundles		≤ 100% / 21	EI 120
	EIC Single	≤ 32 / 21	EI 120
	EIC Bundle	≤ 100% / 32 / 21	EI 120

Measurements in mm



The Installation Steps at a Glance

The installation steps of the PYRO-SAFE® CT ML Cable Tubes for installation in soft seals are shown in the following.



1. Carefully fold the PYRO-SAFE® CT ML Cable Tube around the lines. Ensure that all lines are completely enclosed in the half-shell.



2. Cut the mineral-fibre board and coat the edges with PYRO-SAFE® FLAMMOTECT-A. Then insert the boards in two layers with the coated sides facing outwards.



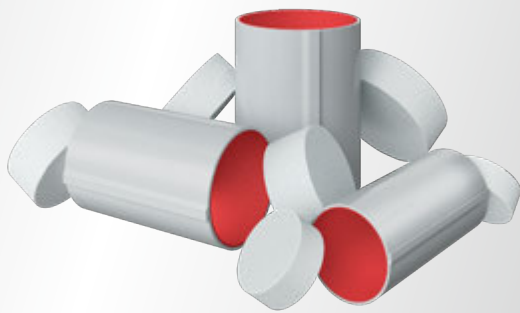
3. If necessary, seal any remaining openings with mineral wool. Cut the plug and adjust at one side.



4. Seal the surface of the mineral-fibre boards and plugs with PYRO-SAFE® FLAMMOTECT-A. If necessary, mark the seal.

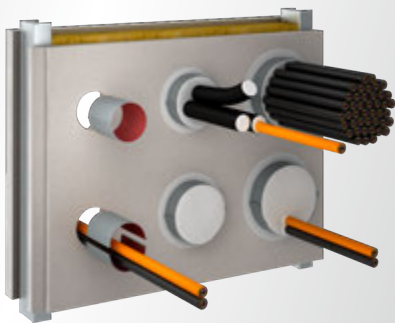
Simple Sealing and Versatile Use for Fire Protection

You will find an overview of the PYRO-SAFE® CT product range and its wide range of application options in the following. Thanks to the extension of the product portfolio to include diameters of 60 mm and 90 mm, you can now get the entire product range in three sizes from a single source.



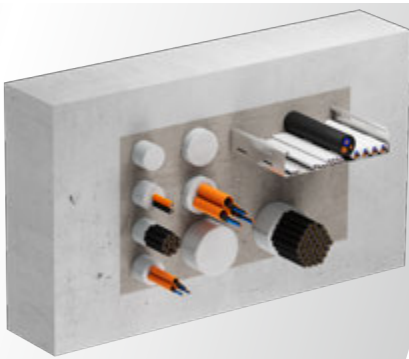
PYRO-SAFE® CT Cable Tube

The cable tube made from 2 plastic half-shells with an intumescent inlay for sealing existing or media lines to be installed in the future (e. g. electrical installations and HVAC split line combinations).



Single arrangement

Extremely simple sealing of single PYRO-SAFE® CT Cable Tubes in socket and core holes. Annular gap closure made from mortar or gypsum (e. g. PYRO-SAFE® GFM) or mineral wool with coating made of PYRO-SAFE® FLAMMOTECT-A.



Group arrangement

Arrangement of several PYRO-SAFE® CT cable tubes in one opening together with other penetrations in the PYRO-SAFE® Novasit BM mortar combi sealing system.



PYRO-SAFE® CT ML Cable Tube

The variant made of a half-shell for one-sided installation in system floors in soft or mortar penetration sealing systems.



Your Benefits

Simple Penetration Seal in Different Sizes

- ✓ Separable housing for installation around existing lines
- ✓ 100 % utilisation of the PYRO-SAFE® CT Cable Tube diameter
- ✓ Suitable for 68 mm socket holes and 100 mm core holes
- ✓ Easy reuse without any subsequent measures
- ✓ Extremely suitable for planning with BIM

Versatile Use

- ✓ Individual or group arrangement for sealing existing lines or as a spare seal for future installations
- ✓ Design variant with one-sided installation for use in system floors
- ✓ Can also be used in combined penetration seals





Protect your values.

svt Products GmbH

Gluesinger Strasse 86
21217 Seevetal
Germany
T +49 4105 4090-0
global@svt.de
www.svt-global.com