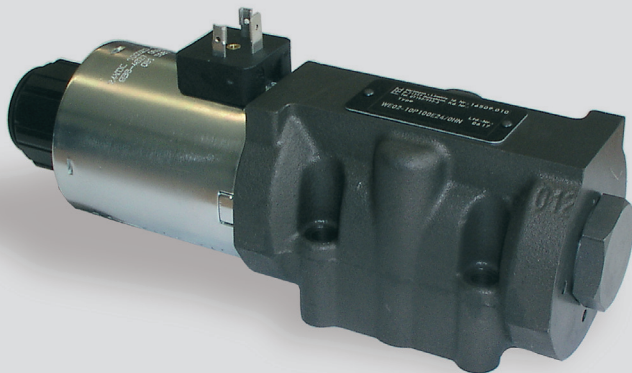


4/2, 4/3 Directional Control Valve, NG 10 ISO 4401, directly controlled Technical Data Sheet



Technische Daten

Allgemein

Type	piston valve
Operation	electric
Mounting	4x M6x40 DIN912
Connection of ports	mounting plate
Mounting position	mountable in any position
Ambient temperature	-5 to +50 °C
Mass valve	3,9 kg (one solenoid) 5,4 kg (two solenoids)

Hydraulic

Operation pressure P,A,B	315 bar
Operation pressure T	210 bar
Hydraulic oil temperature	-30 to +80 °C
Viscosity range	20 bis 400 mm ² /s
max. flow	120 l/min

Electric

Voltage (±10%)	24 V DC	230V, 50Hz AC
Switching time on *	90 ms	160 ms
Switching time off **	70 ms	100 ms
Power consumption P20	32 W	
Start up peak P20		50 VA
Duty factor	100%	100%
Protection system DIN	IP65	IP65
40050		

* at 24V DC ± 5%

** at terminal voltage = -50V at free circuit

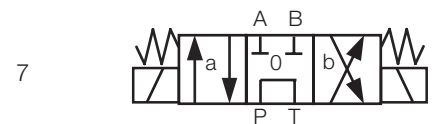
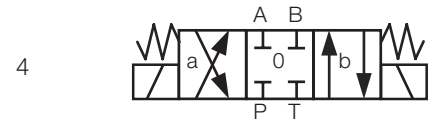
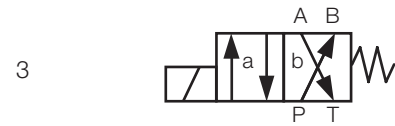
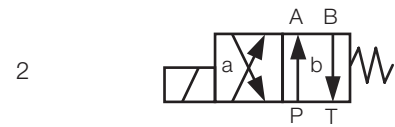
Features

- directly controlled piston valve
- high switching capacity
- saving energy by low flow resistance
- preassure sealed oli-immersed solenoids for direct or alternating current
- easy service: solenoid can be changed without leakage while the valve is under system pressure; no tools are required
- solenoids can be rotated 3 x 90°, allowing alternative connector positions
- port connection pattern according to ISO 4401

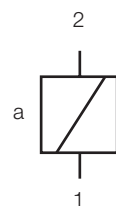
Options

- alternativ voltage
- alternative symbols - data sheet: 14607-DSH
- alternativ plugs

Symbol

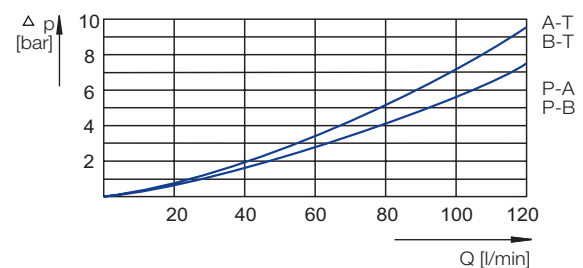


Electrical Connection



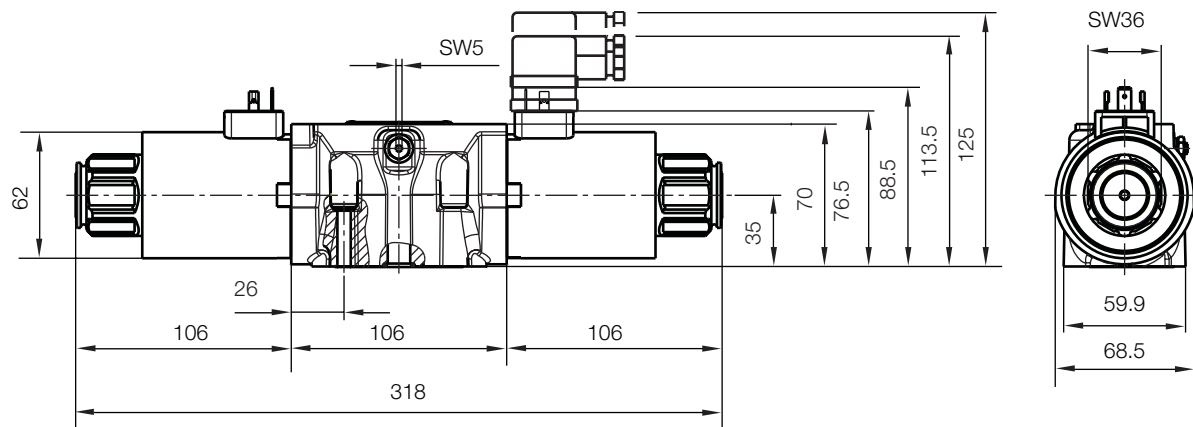
connector-type: DIN 43650, design A

Characteristic Curve



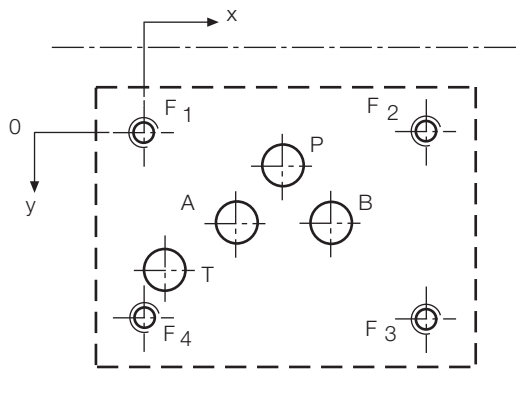
hydraulic oil 35 mm²/s, 50°C

Dimensional Drawing



dimensions in mm
 plug is not included
 mounting screws are not included, 4 pcs. M6x40 DIN 912, M=15 Nm

Port Connection Pattern NG10 ISO 4401

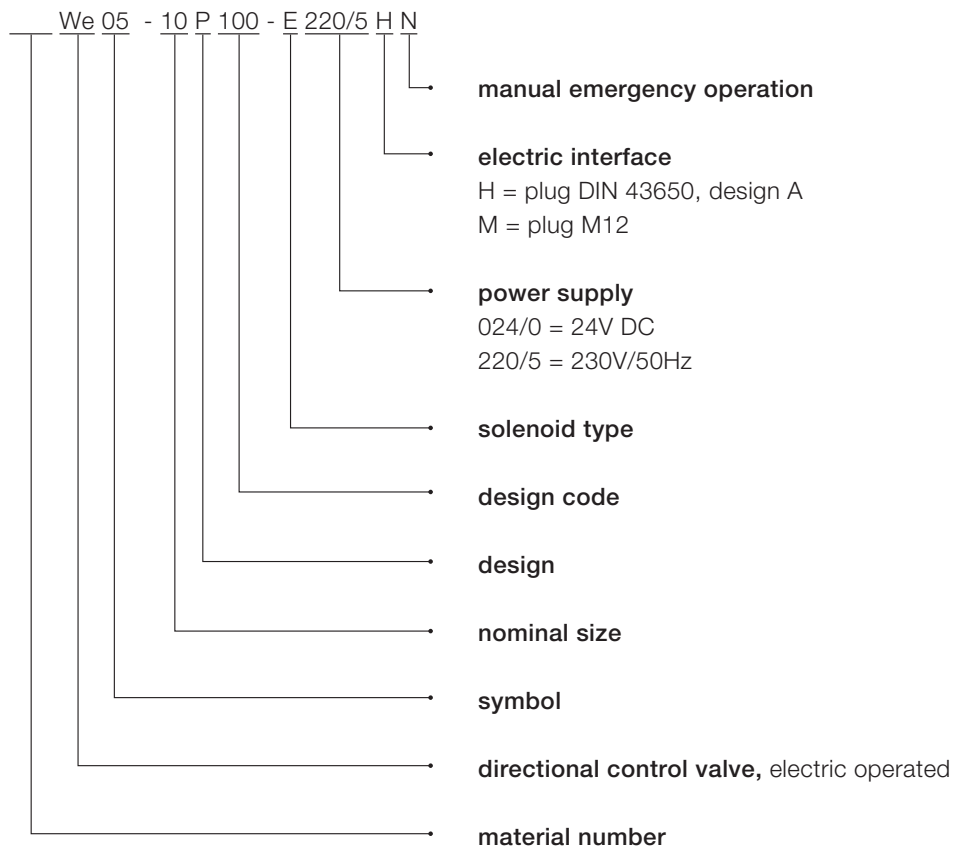


view: fastening side of mounting plate

	P	A	T	B	F1	F2	F3	F4
Ø max [mm]	11,2	11,2	11,2	11,2	M6	M6	M6	M6
x [mm]	27	16,7	3,2	37,3	0	54	54	0
y [mm]	6,3	21,4	32,5	21,4	0	0	46	46

dimensions in mm
 F: M5, thread depth min. 1.5 x Ø
 Various single and multiple mounting plates are available.

Type Code



This is a translated document. Original language: german.
Legally binding language version of document: german.