



DUAL AXES MAGNETIC MIRRORS

OVERVIEW

The **sercalo** magnetic deflection units are used for optical beam steering and scanning. The 2-D mirror has a reflective surface of 2.5 x 3.6 mm.

Using magnetic actuation, the deflection angle is set linearly with the driving current. The mirror is designed for DC operation as well as scanning.

FEATURES

- 2 actuation Axes
- $\pm 4^\circ$ (up to 5°)
- Linear control

APPLICATIONS

- 2D Static and dynamic
Optical Beam Steering
- 2D Optical Scanner
Device

ORDERING INFORMATION

- | | |
|---------------------|--|
| MM-2536-2-AU | <i>2.5x3.6mm Gold surface finish</i> |
| MM-2536-2-AL | <i>2.5x3.6mm Aluminum surface finish</i> |

CONTACT

Sercalo Microtechnology Ltd
Landstrasse 151, FL 9494 Schaan
Principality of Liechtenstein
Tel. +423 237 57 97 Fax. +423 237 57 48
www.sercalo.com Email: info@sercalo.com

TECHNICAL SPECIFICATIONS

| | Unit | Min | Typ | Max |
|----------------------------|-----------------------|---------------|-------------------|--------------------|
| Max actuation Current | <i>mA</i> | | | 200 |
| Max actuation Power | <i>W</i> | | | 1 |
| Surface finish | - | | Gold or Aluminium | |
| Reflectivity (800-2000 nm) | % | 95 | | |
| Mirror Size (A x B) | <i>mm²</i> | | 2.5 x 3.6 | |
| Mirror Flatness (ROC) | <i>m</i> | 10 | | |
| Tilt Angle DC (mechanical) | <i>deg</i> | $\pm 4^\circ$ | | (up to 5°) |
| Resonance Frequency X | <i>Hz</i> | 350 | 390 | |
| Resonance Frequency Y | <i>Hz</i> | 200 | 240 | |
| Angle of Incidence | <i>deg</i> | | | 45 |
| Operating Temperature | $^\circ\text{C}$ | -5 | | 85 |
| Storage Temperature | $^\circ\text{C}$ | -40 | | 85 |

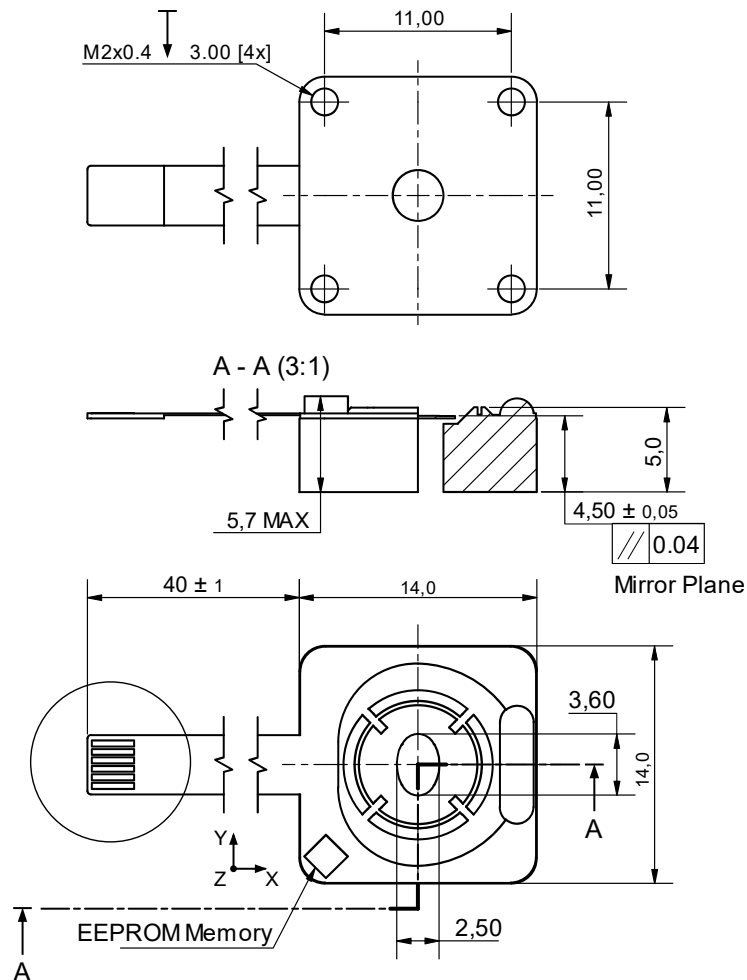


Figure 1: Mechanical layout for MM2536-2 Deflection Unit (units = mm)