



# TEL-TRU MANUFACTURING COMPANY

## XTRC-1202 PC-PROGRAMMABLE TRANSMITTER FOR PT100 INPUT

The XTRC-1202 is a digital, easy-to-use temperature transmitter for measurement with a Pt100 resistance sensor. Its robust design and high quality gives excellent performance and accuracy also under harsh conditions. XTRC-1202 combines competitive cost with easy and user friendly functionality and reliable accuracy during the lifetime.

### FEATURES:

- Robust terminals with test connections
- Input: Pt100 in 3-wire connection
- PC configurable measuring ranges without need for calibration
- Temperature linear output
- Very short response time
- Excellent EMC immunity
- Configuration without external power
- Easy-to-use Windows configuration software
- USB communication
- Withstands vibrations up to 10 g
- Runtime counter
- Only 0.72 inch / 19.5 mm high

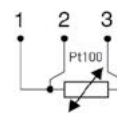
### SPECIFICATIONS:

<b>Input RTD</b>	3-wire connection
Pt100 ( $\alpha = 0.00385$ )	-58/1562°F or -50/850°C
<b>Sensor failure</b>	Upscale ( $\geq 21.0$ mA) or downscale ( $\leq 3.6$ mA) action
<b>Adjustments</b>	
Zero adjustment	Any value within range limits
Minimum span	36°F or 20°C
Sensor error compensation	$\pm 10\%$ of span for span < 180°F/100°C otherwise $\pm 18^\circ\text{F} / \pm 10^\circ\text{C}$
<b>Output</b>	4...20 mA, temperature linear
Adjustable filtering level	0.13 to 54 s, (default 0.9 s)
Response time	< 50 ms
<b>Environment conditions</b>	
Ambient temperature	-40/185°F or -40/85°C
Humidity	0...98% RH (non-condensing)
Vibrations	Acc. to IEC 60068-2-6, test Fc, 10...2000 Hz, 10 g
EMC	Directive: 2014/30/EU Harmonized standards: EN 61326-1, EN 61326-2-3
<b>Galvanic isolation</b>	No
<b>Power supply</b>	6.0...32.0 VDC
<b>Intrinsic safety</b>	Call for information on ATEX, IECEx, FM US/CA models
<b>Accuracy</b>	Max of $\pm 0,1\text{K}$ or $\pm 0,1\%$ of span $\pm 0,1\%$ of span per year
<b>Connection head</b>	DIN B or larger
Weight	0.07 lb / 32 g
Protection, housing / terminals	IP 65 / IP 00

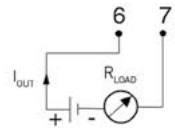


### CONNECTIONS

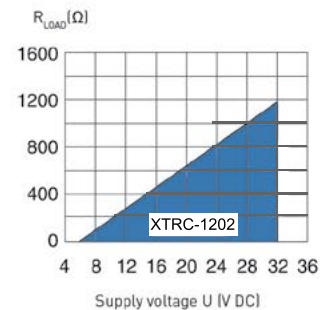
#### Input connections



#### Output connections



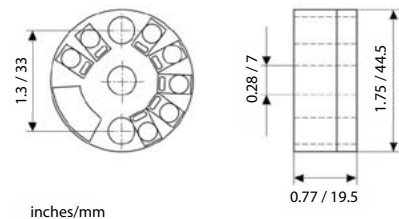
#### Output load diagram



$$R_{LOAD} = (U - 6) / 0.022$$

$$R_{LOAD} = (U - 8) / 0.022$$

### DIMENSIONS:



### HOW TO ORDER

XTRC-1202 Transmitter [TT31XXXX](#)  
 XTR-CFG PC configuration kit (USB-conn.) [TTXTRCFK](#)



### Tel-Tru Manufacturing Company

408 St. Paul St., Rochester, New York 14605 USA  
 Phone: 585.232.1440 • 800.232.5335 • Fax: 585.232.3857 • E-mail: [info@teltru.com](mailto:info@teltru.com) • Web: [www.teltru.com](http://www.teltru.com)

XTRC1202  
 © 2021