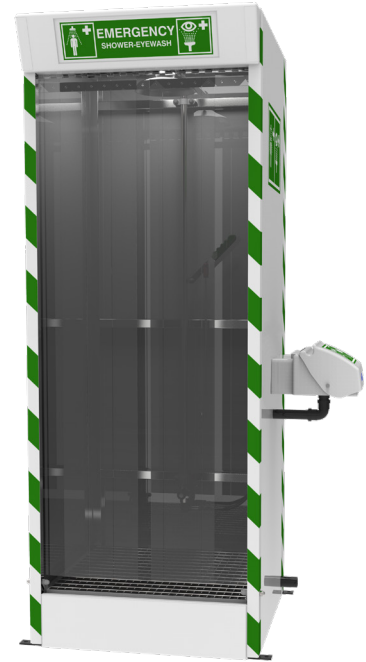


# Product Datasheet

## Cubicle safety shower with ABS closed bowl eye wash

STD-SD-32K/45G

Designed to protect the surrounding area from splashes of surplus contaminated water and to provide a designated decontamination zone, this emergency safety shower with drain sump is housed within a self-contained cubicle. The external side mounted eye/face wash has an integral lid to protect the bowl and diffusers from dust and pollutants. Meets the recommendations stipulated in EN15154 and ANSI Z358.1-2014 standards.



*Shown with optional eye wash and strip screens*

## Specifications

MATERIALS OF CONSTRUCTION	
PIPEWORK & FITTINGS	Stainless steel
FRAME	Stainless steel
OPERATING VALVE	Stainless steel, full bore, stay open ball valve
SHOWER ROSE	ABS
EYE WASH	Acrylic capped ABS
EYE WASH DIFFUSERS	Chrome plated brass retaining ring, stainless steel filter mesh, plastic body
STANDARD FINISH	GRP
SERVICES	
WATER INLET	1" male BSP
OPERATING PRESSURE	2 to 6 BAR G / 29 to 87 PSI (higher supply pressures accommodated with the incorporation of the optional pressure reducing valve)
MINIMUM FLOW RATES	Shower: 76 L per minute / 30 US gal per minute Eye wash: 12 L per minute / 3 US gal per minute
AMBIENT OPERATING TEMPERATURE	
MINIMUM	5C / 41F
MAXIMUM	35C / 95F
OPERATION	
SHOWER	Pull handle
EYE WASH	Pull lid down
DIMENSIONS & WEIGHT	
DIMENSIONS (WxDxH)	955mm (52in) x 997mm (39.2in) x 2409mm (94.8in)
WEIGHT	145kg (320lb)

# General Arrangement Drawing

## Cubicle safety shower with ABS closed bowl eye wash

STD-SD-32K/45G

