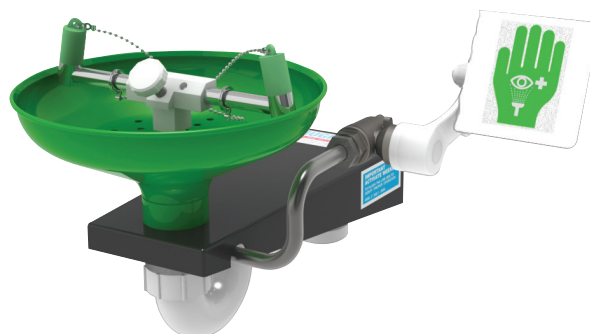


Product Datasheet

Wall mounted powder coated stainless steel eye wash

LAB-85GS

Ideal for laboratories, schools, store rooms and general light duty indoor use. This wall mounted eye/face wash has been designed to meet the requirements of the European Standard EN15154 for Laboratories and ANSI Z358.1-2014. The powder coated stainless steel finish gives improved corrosion resistance and is easy to clean. The eye wash diffusers are fitted with fine mesh strainers to provide a gentle flow of aerated water, preventing any further injury to the eye.



Specifications

MATERIALS OF CONSTRUCTION	
BOWL/LID	Powder coated stainless steel
DIFFUSERS	Chrome plated brass retaining ring, stainless steel filter mesh, plastic body
PIPEWORK	Stainless steel
STANDARD FINISH	Green powder coated polyester finish
SERVICES	
WATER INLET	1/2" Female BSP
OPERATING PRESSURE	2.0 to 6 BAR G / 32 to 87 PSI (higher supply pressures accommodated with the incorporation of the optional pressure reducing valve)
MINIMUM FLOW RATES	12 L per minute / 3 US gal per minute
AMBIENT OPERATING TEMPERATURE	
MINIMUM	5C / 41F
MAXIMUM	35C / 95F
OPERATION	
EYE/FACE WASH	Push plate
DIMENSIONS & WEIGHT	
DIMENSIONS (WxDxH)	429mm (16.9in) x 401mm (15.7in) x 290mm (11.4in)
WEIGHT	4kg / 8lb

General Arrangement Drawing

Wall mounted powder coated stainless steel eye wash

LAB-85GS

