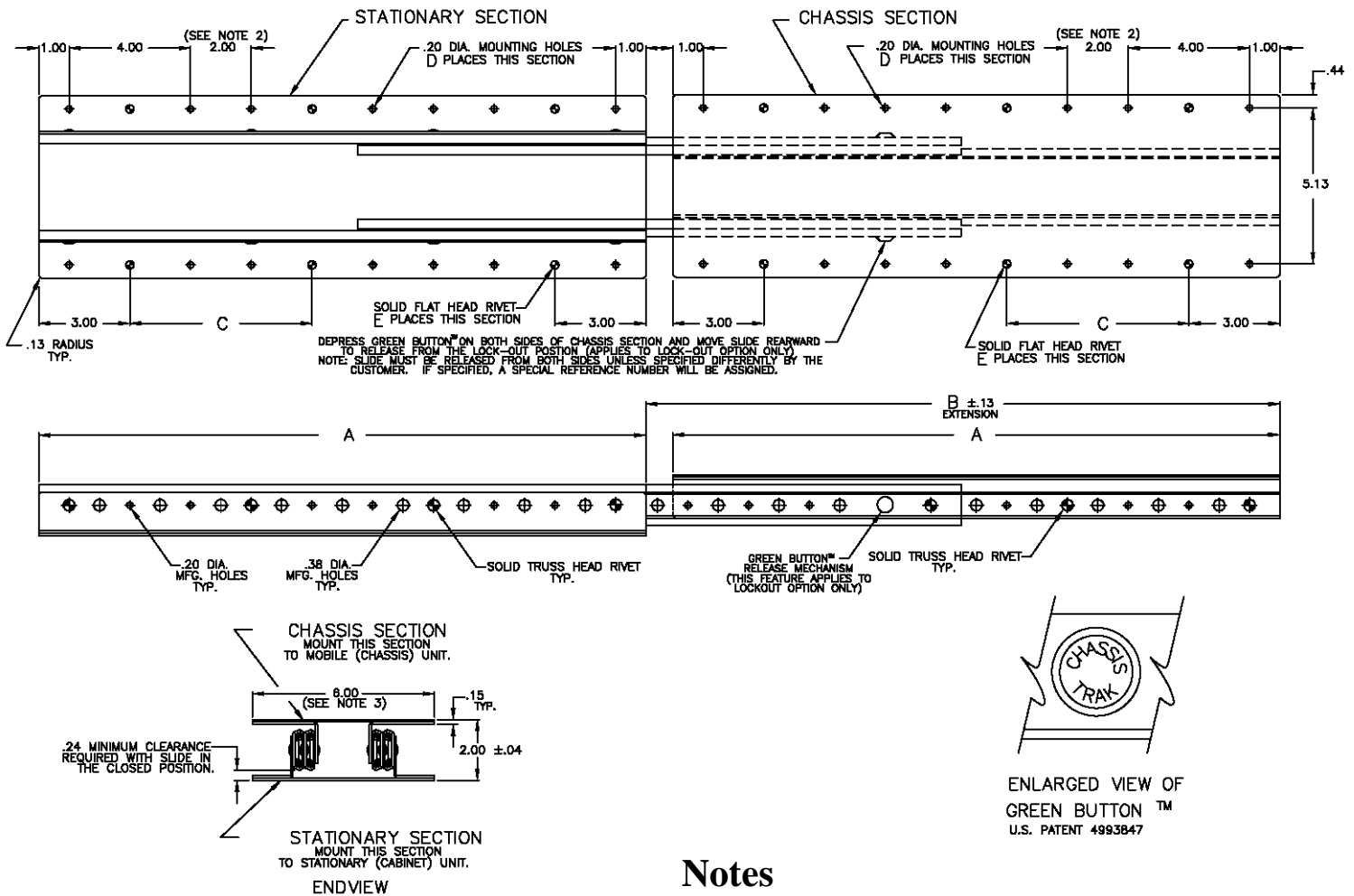
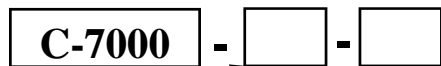


Linear Bearing Bottom Mount Slide For Tension Or Compression Loading



TO ORDER, SPECIFY



Length (Dim. A) **LO** - For Locking At Fully Extended Position

Catalog Number	A	B	C	D	E	Load Capacity
C-7000-10	10.0	10.88	OMIT	6	4	180 LBS.
C-7000-12	12.0	12.88	OMIT	8	4	175 LBS.
C-7000-14	14.0	14.88	4.00	8	6	170 LBS.
C-7000-16	16.0	16.88	4.00	10	6	160 LBS.
C-7000-18	18.0	18.88	6.00	12	6	150 LBS.
C-7000-20	20.0	20.88	6.00	14	6	145 LBS.
C-7000-22	22.0	22.88	8.00	16	6	130 LBS.
C-7000-24	24.0	24.88	8.00	18	6	115 LBS.
C-7000-26	26.0	26.88	10.00	20	6	105 LBS.
C-7000-28	28.0	28.88	10.00	22	6	90 LBS.
C-7000-30	30.0	30.88	12.00	24	6	75 LBS.

Notes

- C-7000 slides have positive stops but do not lock at any position. Optional lock-out feature is readily available (see order specification chart).
- This dimension is typical except where hole is replaced with solid flat head rivet.
- This dimension is standard, but may be changed readily to meet customer requests (4.31 minimum dimension). For additional modifications, contact the factory.
- Finish: clear zinc commercial plating.
- Ball bearing rollers are lubricated with -45°F to +350°F temperature range grease.
- Load capacity is based on one slide at full extension with the load (center of gravity) at the midpoint of the slide (chassis section). This capacity has a 100% static (non-moving) load safety factor at full extension. It is not intended for operation with loads exceeding specified load capacity. For increased load capacity, multiply the number of slides required for the application.
- Slide is designed for compression or suspension loading.
- Slide members and plate are made of 14 gage (.074) cold rolled steel.
- Standard mounting hardware package is included with each slide assembly.
- Other non-standard options are available including other finishes and lock-in features. These options require a special reference number.