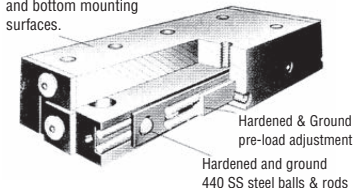


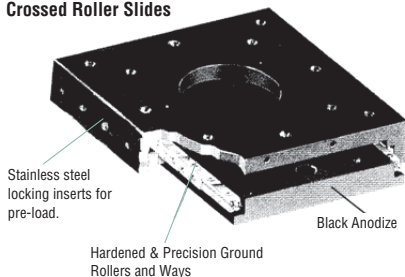
HIGH PRECISION BALL & CROSSED ROLLER SLIDES

Ball Slides

Hardened & Ground Top and bottom mounting surfaces.



Crossed Roller Slides



Design Criteria:

Ball Slides

Ball slides are mechanically simple linear motion devices comprised of a stationary base member with a mobile carriage riding on top. Two rows of hardened stainless steel balls on both sides of the base provide the smooth, accurate, low friction sliding motion between the stationary base and the top slide. Each row of bearings is contained between four hardened and precision ground stainless steel rods.

These bearing assemblies are factory preloaded to eliminate wobble and unwanted play in the system.

Design Criteria:

Crossed Roller Slides

The Crossed Roller systems are composed of two rows of rollers. Each roller is alternately criss-crossed (at 90°) with the next and captured in V grooves, precision ground into steel ways mounted to the base and top. They offer a higher load carrying capacity and higher support stiffness for the load than ball slides.

Selection Review:

All models offer high quality construction features:

Straight line accuracy of 0.00008 in/in of travel (0.00025 in/in of travel for miniatures)

Precision ground mounting surfaces to assure flatness and parallelism

Factory preloaded to precision specifications to eliminate any side play and to provide a uniform coefficient of friction

Factory tapped and threaded mounting holes on both base and carriage for easy mounting

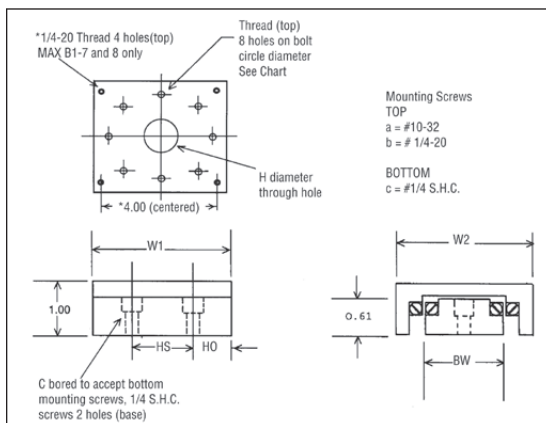
Locking thread inserts on preloaded screws for a maintenance-free life without loss of pre-load

Hardened and precision ground stainless steel balls and rods on ball slides

HIGH PRECISION CROSSED ROLLER SLIDES

88 TO 120 lb LOAD CAPACITY

TRAVEL
1 – 3 INCH



Material: Aluminum, Stainless Steel.

Specifications: Straight line accuracy
.00008 in/in of travel

Finish: Black anodize.

Special hole modifications, sizes and
custom machining available.

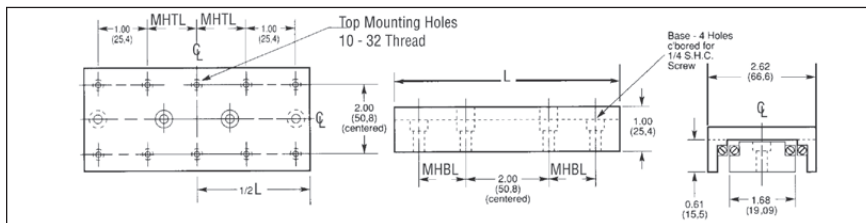
ORDER BY CATALOG NUMBER

Catalog Number	Travel Inches	Load lb	Width W1 & W2	Hole space HS	Hole offset HO	Mtg Screws Top Bottom	Bolt Location BL	Base Width BW	Thru Hole TH	Weight lb
MAX-B1-5	1.0	88	2.62	2.00	0.31	a) c)	2.00	1.68	-	0.8
MAX-B1-6	1.0	88	2.62	2.00	0.31	a) c)	2.00	1.68	1.00	0.7
*MAX-B1-7	3.0	120	5.00	4.00	0.50	b) c)	4.00	3.88	-	2.2
*MAX-B1-8	3.0	120	5.00	4.00	0.50	b) c)	4.00	3.88	2.00	1.7

HIGH PRECISION CROSSED ROLLER SLIDES

128 TO 244 lb LOAD CAPACITY

TRAVEL
2 – 4 INCH



Catalog Number	Travel Inches	Load lb	Length L	Mounting Holes		
				Base Location MHBL	Top Location MHTL	Top Quality TQ
MAX-B1-9	2.00	128	4.0	0.69	0.50	6
MAX-B1-10	3.00	190	5.0	1.19	1.00	6
MAX-B1-11	4.00	244	6.0	1.69	0.50	10

Material: Aluminum / Stainless Steel. **Specifications:** Straight line accuracy .00008 in/in of travel
Finish: Black anodize. Special hole modifications, sizes and custom machining available.

19M

(800) 243-0986 In CT: (203) 775-4877 sales@nordex.com

NORDEX