

Agilent E4444A BenchLink Spectrum Analyzer

PC Software for Portable Spectrum, EMC, and Sweep/Ingress Analyzers

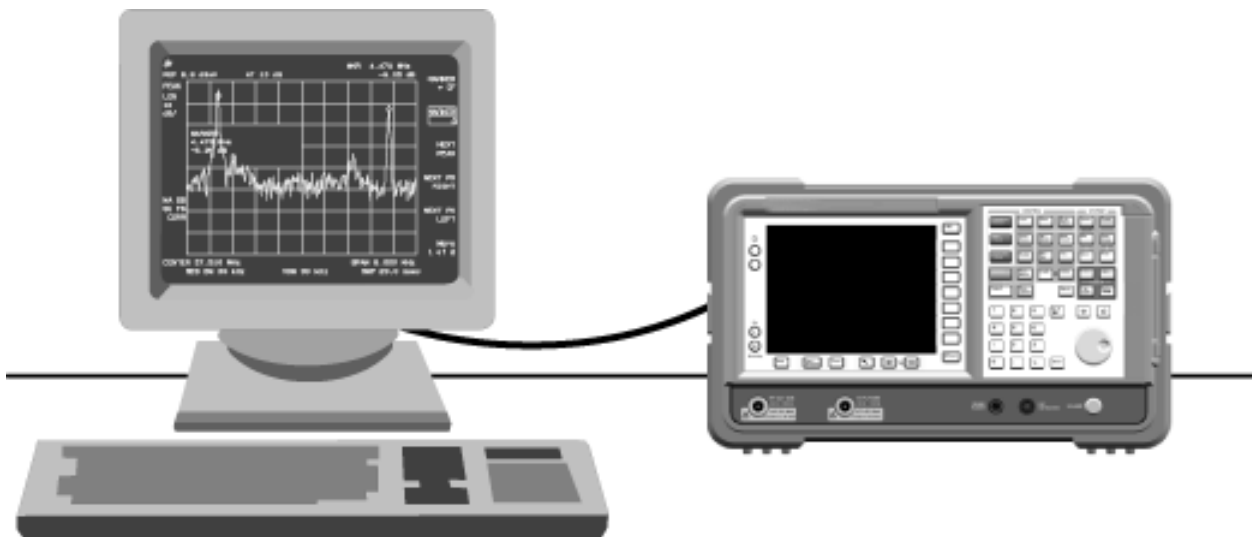
Product Overview

Easily transfer screen images and trace data from the Agilent Technologies 8560 series*, 8590 series, and ESA-E/L series portable spectrum analyzers; the

E7400 series EMC analyzers; and the CaLan 2010/3010 series sweep/ingress analyzers over GPIB or RS-232 interfaces to a Windows®-based PC.

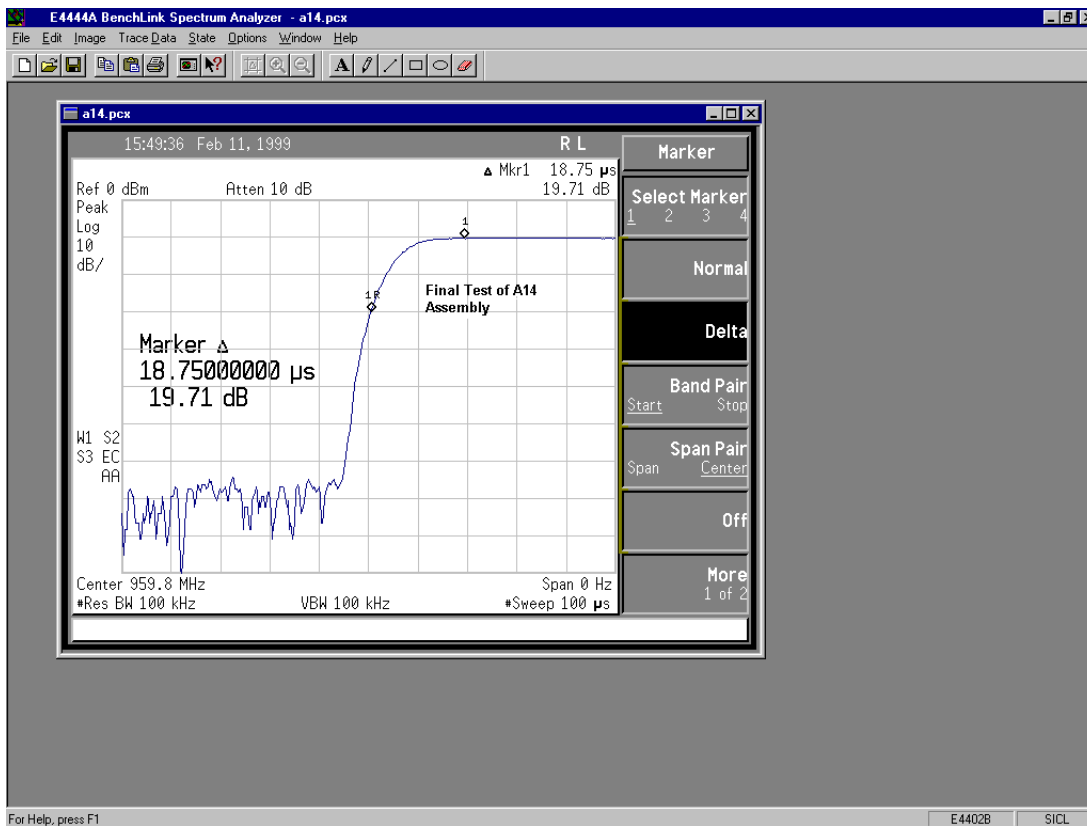
Capture your measurement results and:

- Save
- Print
- Copy & paste
- Analyze
- E-mail
- Import
- Annotate
- Document



Easy to use

- We've done all the programming for you.
- The simple user interface is similar to that of other BenchLink products.
- On-line context-sensitive Help provides detailed support in many languages.
- Users of the Agilent 8590 series, ESA-L1500A, and ESA-E/L series spectrum analyzers can restore previous instrument setups for ease in capturing repetitive measurements.
- A multilanguage Getting Started guide and a full install/uninstall utility simplify installation.
- Convenient multicolor annotation tools add key information to screen images.



Screen images

- Transfer a color picture of the analyzer screen to your PC to view, save, annotate, e-mail, or print.
- Capture the images in bitmap or HP-GL^{1,2} formats and save them as PCX, TIF, GIF, BMP, or HP-GL^{1,2} files for importing into your favorite applications.
- Use the Windows[®] clipboard to copy and paste images directly to your application.

1. HP-GL images can only be saved in an HP-GL file format.
 2. HP-GL images are not available from the Agilent ESA-L1500A, ESA-E/L series, E7400 series, or CaLan 2010/3010 series analyzers.

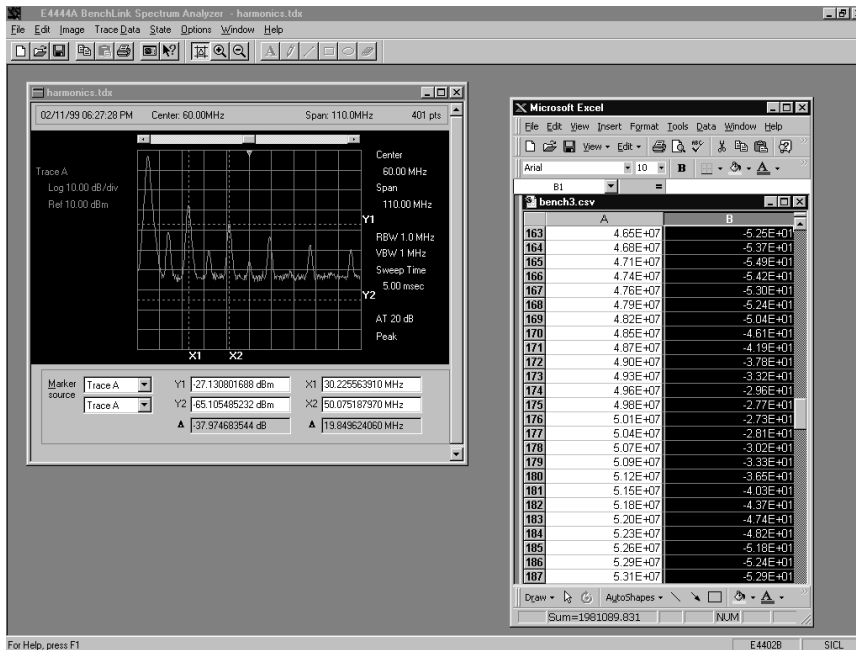
Trace data

- Transfer the frequency/amplitude pairs of trace data and display them graphically on your PC.
- Use the BenchLink Pan, Zoom, and X/Y Marker features to analyze the traces.
- Copy trace data as frequency/amplitude pairs in comma- or tab-separated formats to spreadsheets or math applications for further analysis and manipulation.

Compatibility

- The BenchLink Spectrum Analyzer supports these Agilent instruments:
 - 8560 series*
 - 8590 series
 - 8590 EM-series
 - ESA-L1500A
 - ESA-E/L series
 - E7400 series
 - CaLan 2010/3010 series
- Supported PC operating systems are Windows 3.1 or higher (with MS-DOS® 4.0 or higher), Windows 95, Windows 98, and Windows NT® 4.0. Operation under MS-DOS or NT 3.51 is not supported.

- Minimum system requirements are: IBM or compatible PC with a 486/25 MHz processor, 8 MB RAM, 3 MB available disk space, MS-compatible mouse, color VGA/SVGA display, CD-ROM, or 3.5-inch high-density floppy drive. The program is provided on CD-ROM and includes 3.5-inch floppy disk installation/build capability and full uninstall.
- Supported interfaces include RS-232 and IEEE-488. Suitable IEEE-488 PC interface cards include Windows-compatible GPIB and most National Instrument cards.
- Compatible with the entire BenchLink family of PC software.



Free trial demo

Evaluate a demo version of the BenchLink Spectrum Analyzer on your PC for up to four weeks. Visit Agilent Technologies' Web site at www.agilent.com/find/BenchLinksa to download this demo program to your PC.

