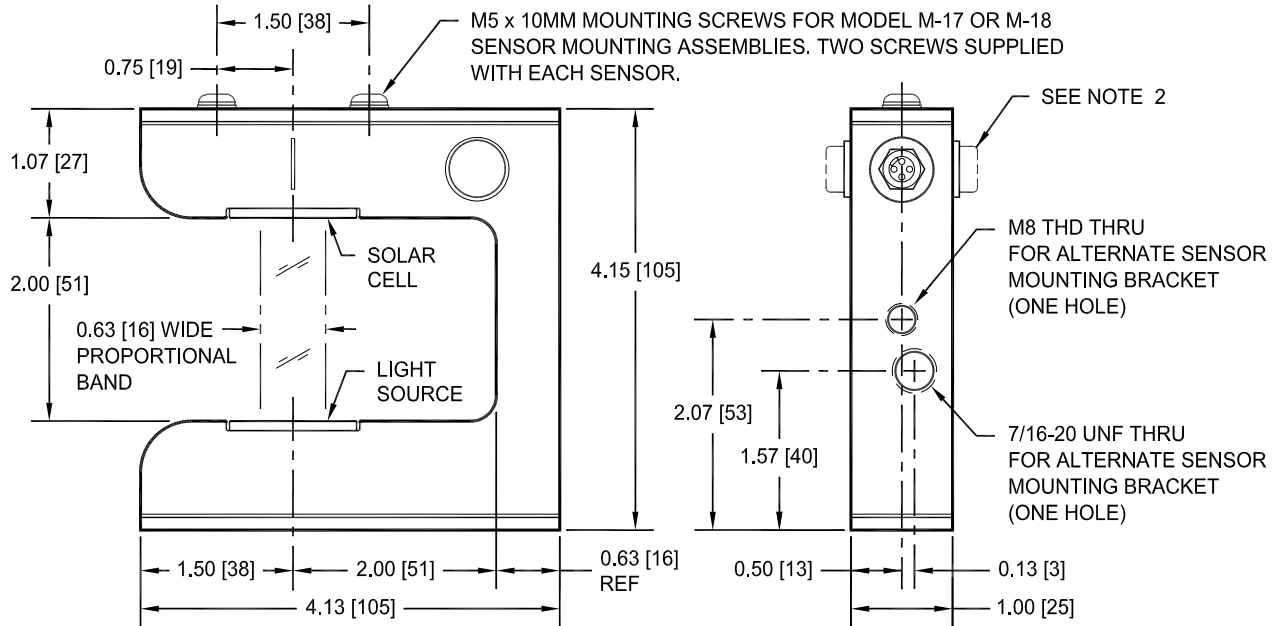


INSTALLATION INSTRUCTIONS

SE-22 SENSOR



General information

NOTES:

- 1) All dimensions in brackets are millimeters [mm].
- 2) The standard position of the receptacle is on the rear of the sensor at the solar cell end as shown in the illustration above. It can be moved to either side of the sensor as follows:
 - (a) Remove the sensor cover plate and gasket adjacent to the receptacle.
 - (b) Remove the hole plug from the position where receptacle is to be placed.
 - (c) Unscrew the receptacle while holding the retaining nut on the inside of the sensor body.

- (d) Move receptacle to desired location, refasten the receptacle, and reassemble the sensor.

SPECIFICATIONS:

Product Weights

| | |
|-----------------------------|----------------|
| SE-22 Sensor | 10 oz (281 g) |
| With M-17 Sensor Mounting | 13 oz (368 g) |
| With M-18 Sensor Mounting | 14 oz (397 g) |
| With M-1935 Sensor Mounting | 64 oz (1825 g) |

Maximum Operating Ambient Temperature 140° F (60° C)

Voltage Required for Operation 10 to 15 VDC

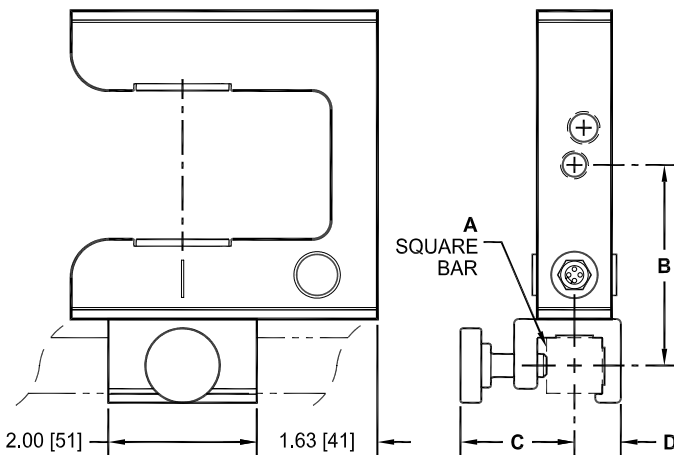


Table 1
SE-22 WITH OPTIONAL M-17 OR M-18 SENSOR MOUNTING

| SENSOR MOUNTING | SQUARE BAR | | B | C | D |
|-----------------|------------|----------------|-----------|-----------|-----------|
| | A SIZE | MAXIMUM LENGTH | | | |
| M-17 | 0.75 [19] | 60.00 [1524] | 2.69 [68] | 1.50 [38] | 0.63 [16] |
| M-18 | 1.00 [25] | 86.00 [2184] | 2.82 [71] | 2.00 [51] | 0.75 [19] |

INSTALLATION INSTRUCTIONS

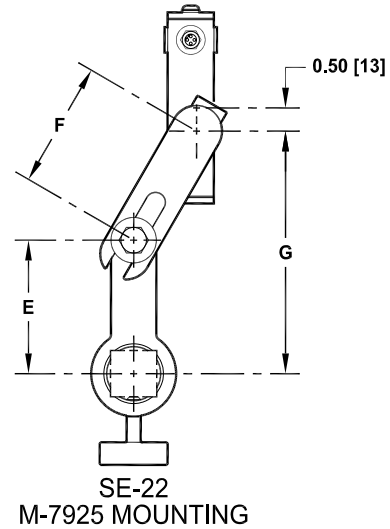
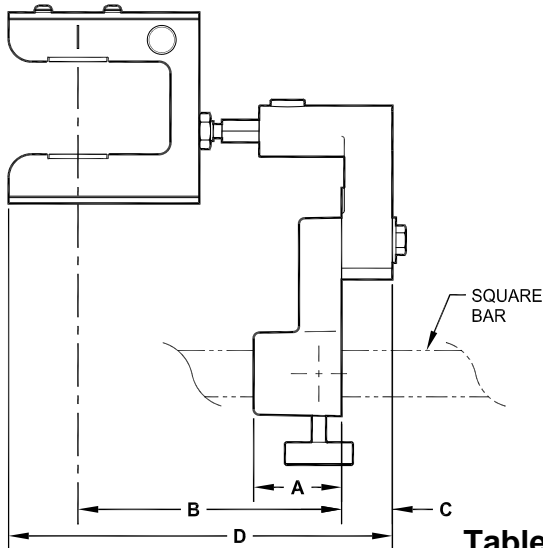
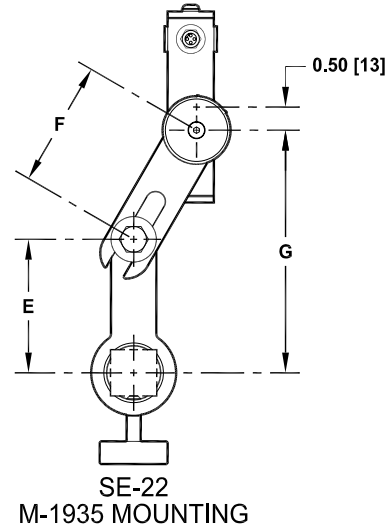
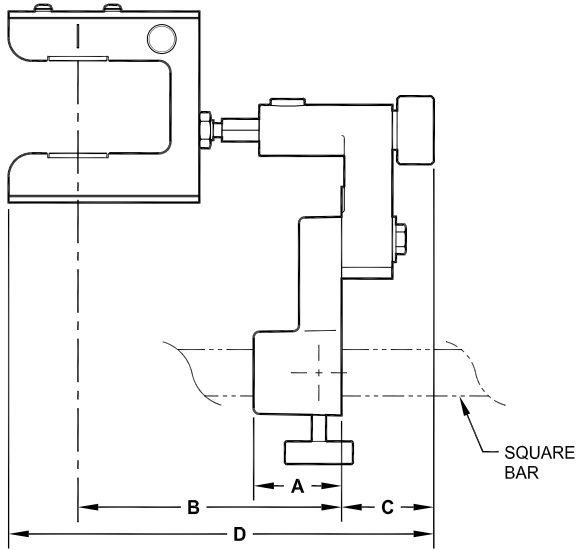


Table 2
SE-22 WITH OPTIONAL M-1935 OR M-7925 SENSOR MOUNTING

| SENSOR MOUNTING | SQUARE BAR | | A | B ADJUSTABLE | C | D ADJUSTABLE | E | F ADJUSTABLE | G ADJUSTABLE |
|-----------------|--------------|-----------------|--------------|------------------------|--------------|------------------------|---------------|----------------------|-----------------------|
| | SIZE | MAXIMUM LENGTH | | | | | | | |
| M-1935 | 1.00 [25] | 86.00 [2184] | 2.00 [51] | 5.13-6.25 [130-159] | 2.00 [51] | 8.63-9.75 [219-248] | 2.94 [75] | 1.81-3.06 [46-78] | 1.00-6.00 [25-152] |
| | 1.25 [32] | 96.00 [2438] | 2.50 [64] | | | | 4.50 [114] | | 1.00-7.00 [25-178] |
| M-7925 | 1.00 [25] | 86.00 [2184] | 2.00 [51] | 4.88-6.38 [124-162] | 1.12 [28] | 7.50-9.00 [191-229] | 2.94 [75] | 1.81-3.06 [46-78] | 1.00-6.00 [25-152] |
| | 1.25 [32] | 96.00 [2438] | 2.50 [64] | | | | 4.50 [114] | | 1.00-7.00 [25-178] |

