



1971-2011 40 years
the power to control

Flashing alarm annunciator units with signal storage FSB 08/16-48 -P USB

programmable for front panel installation 8 – 48 signal inputs

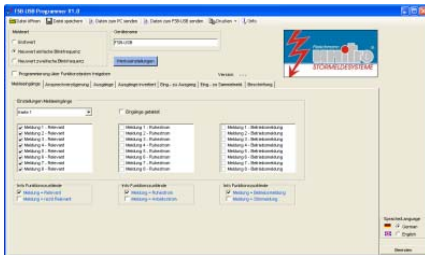
Types:

FSB 16/08 (16) –P USB

flashing alarm annunciator
8 or 16 signal inputs

FSB 48/08 (16/24/32/40/48) –P USB

flashing alarm annunciator
8 to 48 signal inputs
in 8 input steps



Controls and displays

- Bright 5mm LED display
- Separate status indicator (green = Power ON)
- Easily exchangeable label strips
- Integrated functional keys (+ external) + LED-Test

Parameterization

- Rear integrated mini USB interface for parameterization using MS XP-Pro or Windows 7 Pro
- Quiescent / operating current – for each signal
- Running- / alarm – for each signal
- Response delay variable for each signal, max. 10min
- New alert / first alert

Electrical characteristics

- 8 - 48 signal inputs with LED-display, red
- Clocked input circuitry to reduce power loss at DC
- Acknowledgeable flash warning
- Integrated mini horn
- EMC-values: Unitro-Standard in accordance with EN 61000
- Relay output: Change-over contact max. 5A 250V AC, 3A 30V DC

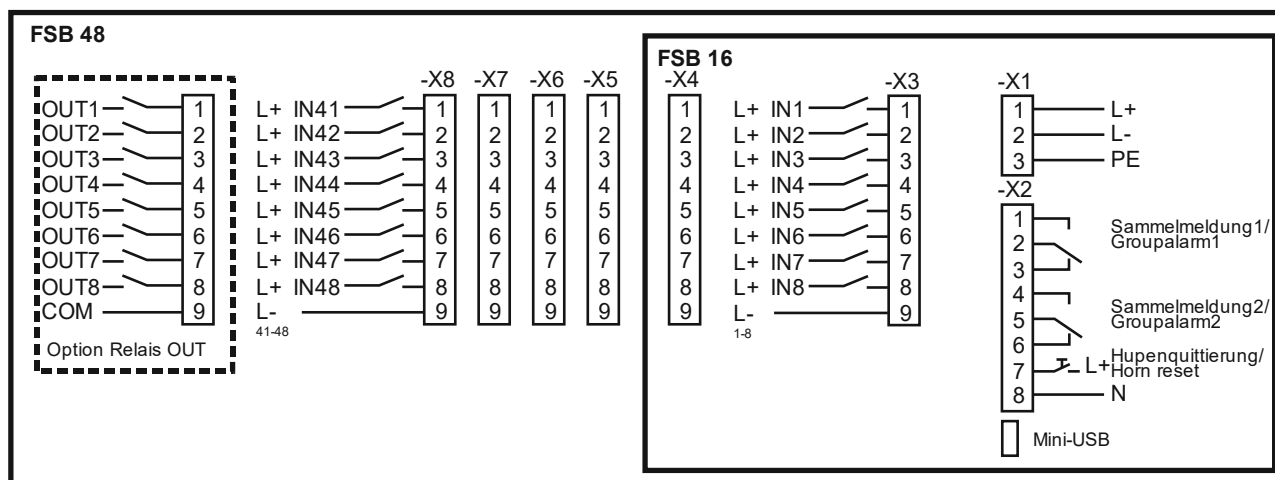
Mechanical characteristics

- Compact plastic junction housing 96/192 x 96 x 100mm. Degree of protection: front IP50
- Screw-type terminals, plug connection for connection max. 2,5mm²

Option

- 8 Outputs, normally-open contacts with common ground (then max. 40 signal inputs)

Connection diagram FSB 16 and FSB 48-P USB



Technical data:

- Type of construction:**
control panel bay
96x96x75+25mm / 192x96x75+25mm
(cutting for installation: 92x92 / 186x92mm)
- Degree of protection:**
front IP50, rear IP20
(FSB16 option IP54)
- Weight:**
FSB 16 approx. 400g
FSB 48 approx. 650g
- Connection:**
screw-type terminals/ plug connection
max. 2,5 mm²
- Climatically conditions:**
in accordance with Unitro-Standard
- Front panel buttons:**
acknowledge horn
acknowledge flash light
LED test
- External button:**
acknowledge horn (normally open contact)
- Supply voltage:**
24V AC/DC
48-60V AC/DC
110/125V AC/DC
220/240V AC/DC
- Max. fuse:**
4A medium slow
- Input level for signal inputs:**

24V AC/DC	± 10% - 15%	4 mA
60V DC	± 10% - 15%	2,5 mA
110V DC	± 10% - 15%	2,5 mA
220V DC	± 10% - 15%	2 mA
230V AC	± 10% - 15%	3 mA
- Minimum signal duration:**
DC: 10ms / AC: 100ms
- Data retention in the absence of power:**
flash memory
- Power loss 100% ED:**
24V AC/DC / 60V DC max. 4,5W
110V DC / 220V DC / 230V AC max. 5,9W
clocked input circuitry to reduce power loss at DC
- LED-signal:**
with marking strips
new alert: red flash light
acknowledge: red steady light
alarm removed: LED dark
power on: green steady light
- Flashing frequencies:**
alarms 2Hz / 0,5Hz
- Relay outputs:**
collective message and horn contact, isolated change-over contact, max. 250V 5A
Option: 8 Outputs, normally-open contacts with common ground
- Parameterization:**
front panel pushbutton or mini USB interface
per input: running- / alarm
quiescence- / operation current
switch on delay max. 10min
output contacts
overall: first up / new alert
- Leakage distances and clearances:**
in accordance with Unitro-Standard
- EMC, immunity of interference:**
Unitro-Standard,
in accordance with EN 61000