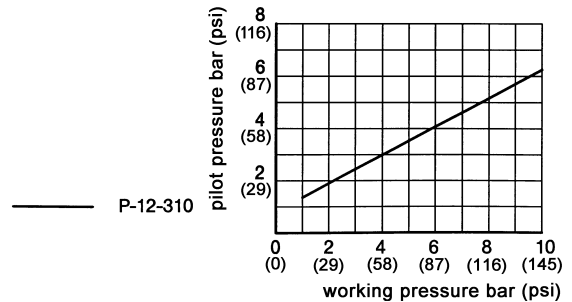
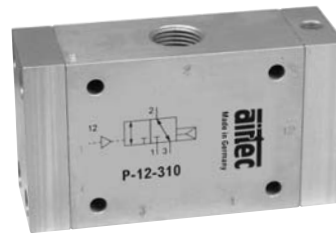
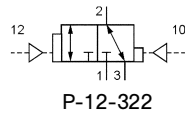
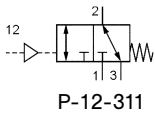
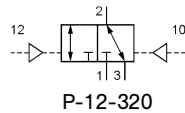
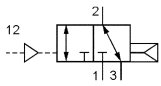


Series P-12

Pneumatically operated valves, 3/2-way
G1/2 • 3300 NI/min (3.354 Cv)



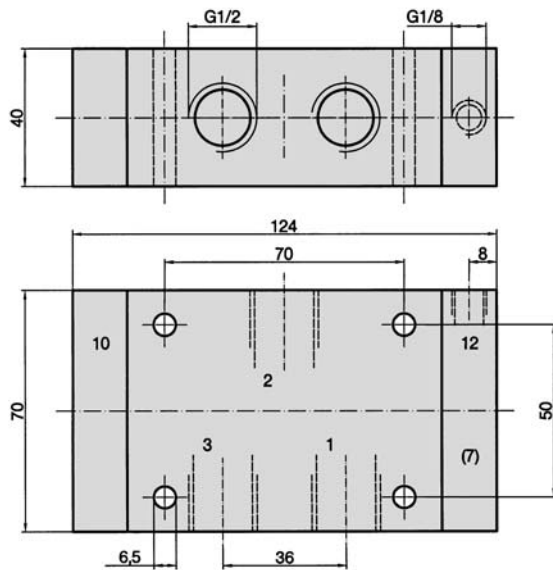
Design, function and technical data

Pneumatically operated spool valve. The valve switches upon pressurization of the pilot port (10 or 12).

The pressure can be connected at 1 (normally closed) or at 3 (normally open).

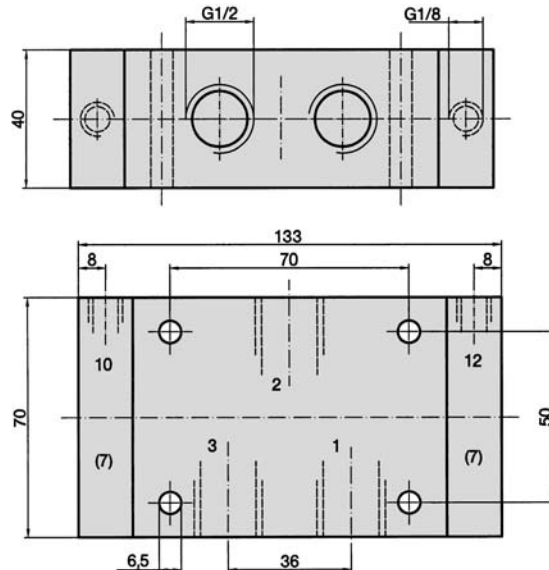
Valves of this series are available in explosion proof design in accordance with 2014/34/EU (ATEX). For further details see chapter 13 of this catalogue.

P-12-310, P-12-311



- 1, 3 = pressure inlet or exhaust
- 2 = outlet
- 12 = pilot port
- (7) = The pilot port can be repositioned by (180°).

P-12-320, P-12-322

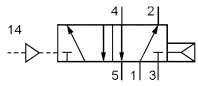


- 1, 2, 3 = for interchangeable use
- 12, 10 = pilot port
- (7) = The pilot port can be repositioned by (180°).

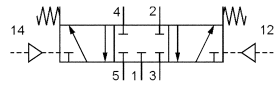
Order number	P-12-310	P-12-311	P-12-320	P-12-322
Function	3/2-way, single pilot air spring return	3/2-way, single pilot spring return	3/2-way, double pilot	3/2-way, double pilot dominant
Connection	G1/2			
Nominal size	14 mm			
Flow rate	3300 NI/min (3.354 Cv)			
Pressure range	1 ... 10 bar (14 ... 145 psi)	0 ... 10 bar (0 ... 145 psi)		
Pilot pressure range	see diagram	2 ... 10 bar (29 ... 145 psi)	1 ... 10 bar (14 ... 145 psi)	
Temperature range	- 10 °C ... + 70 °C (+ 14 °F ... + 158 °F)			
Materials	Body: Al (anodized), Inner parts: Al, brass, stainless steel, Seals: NBR and POM			
Medium	Compressed air in accordance with ISO 8573-1:2010, Class 7:2:4 – and free of aggressive additives.			
Weight	0.820 kg (1.808 lbs.)	0.830 kg (1.830 lbs.)	0.855 kg (1.885 lbs.)	

Series P-12

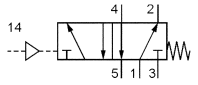
Pneumatically operated valves, 5/2- and 5/3-way
G1/2 • 3300 NI/min (3.354 Cv)



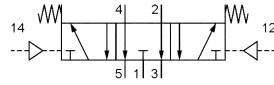
P-12-510



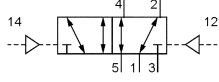
P-12-530



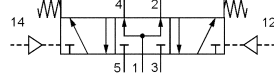
P-12-511



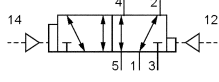
P-12-533



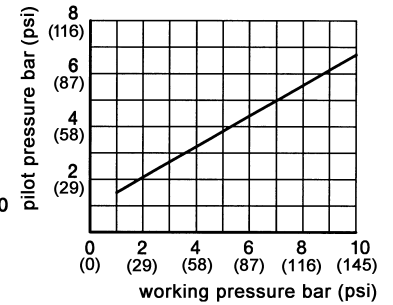
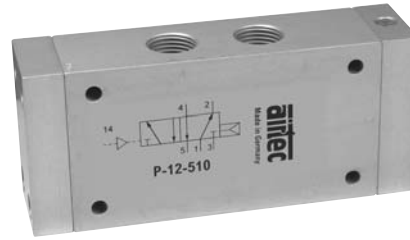
P-12-520



P-12-534



P-12-522, P-12-522-Q



Design, function and technical data

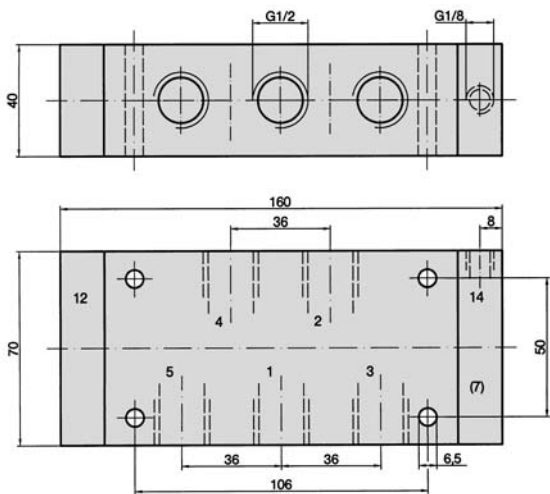
Pneumatically operated spool valve. The valve switches upon pressurization of the pilot port (12 or 14).

Valve P-12-522 is available for use with vacuum (-0.95 ... 10 bar/-14 ... 175 psi).

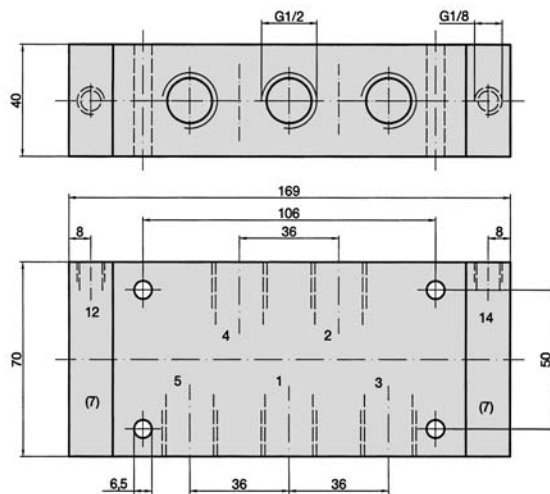
Order number changes to P-12-522-Q.

Valves of this series are available in explosion proof design in accordance with 2014/34/EU (ATEX). For further details see chapter 13 of this catalogue

P-12-510, P-12-511



P-12-520, P-12-522, P-12-522-Q, P-12-530, P-12-533, P-12-534



- 1 = pressure inlet
- 2, 4 = outlet
- 3, 5 = exhausts
- 14 = pilot port
- (7) = The pilot port can be repositioned by (180°).

P-12-530, P-12-533, P-12-534

- 1 = pressure inlet
- 2, 4 = outlet
- 3, 5 = exhausts
- 12, 14 = pilot port

(7) = The pilot port can be repositioned by (180°).

P-12-520, P-12-522, P-12-522-Q

- 1, 2, 3, 4, 5 = for interchangeable use
- 12, 14 = pilot port

Order number	P-12-510	P-12-511	P-12-520	P-12-522	P-12-530	P-12-533	P-12-534
Function	5/2-way single pilot air spring return	5/2-way single pilot spring return	5/2-way double pilot	5/2-way double pilot dominant	5/3-way center position closed	5/3-way center position exhausted	5/3-way center position pressurized
Connection	G1/2						
Nominal size	14 mm						
Flow rate	3300 NI/min (3.354 Cv)						
Pressure range	1 ... 10 bar (14 ... 145 psi)	0 ... 10 bar (0 ... 145 psi)	0 ... 10 bar (0 ... 145 psi)		0 ... 10 bar (0 ... 145 psi)		
Pilot pressure range	see diagram	2 ... 10 bar (29 ... 145 psi)	1 ... 10 bar (14 ... 145 psi)		3 ... 10 bar (43 ... 145 psi)		
Temperature range	- 10 °C ... + 70 °C (+ 14 °F ... + 158 °F)						
Materials	Body: Al (anodized), Inner parts: Al, stainless steel, Seals: NBR and POM						
Medium	Compressed air in accordance with ISO 8573-1:2010, Class 7:2:4 – and free of aggressive additives.						
Weight	1.065 kg (2.348 lbs.)		1.080 kg (2.381 lbs.)				