


Seite
Page
Page

	3/2	Allgemeine Merkmale	General parameters	Caractéristiques générales
RZ 500, RZ 320	3/4	Rundblockzylinder	Circular block cylinder	Vérin-bloc cylindrique

	3/14	Ersatzteile	Spare parts	Pièces de rechange
	16	Zubehör	Accessories	Accessoires

Rundblockzylinder

Circular block cylinder

Vérin-bloc cylindrique



Allgemeine Merkmale

General parameters

Caractéristiques générales



- Maximaler Betriebsdruck 500 bar
- Kompakt bauend
- Kolbenstangen gehärtet und geschliffen
- Kurze Lieferzeiten – großes Lagerprogramm
- Kolbendurchmesser von Ø 16 mm bis Ø 100 mm
- Verschiedene Standardhübe
- Verschiedene Befestigungsarten
- Wie Blockzylinder aufgebaut

- Maximum operating pressure 500 bar
- Compact design
- Piston rods ground and hardened
- Short delivery times – large stock range
- Piston diameters from Ø 16 mm to Ø 100 mm
- Various standard strokes
- Multiple mounting options available
- Structure as for block cylinder

- Pression maximale 500 bar
- Construction compacte
- Tiges de piston trempées et rectifiées
- Délais de livraisons réduits – programme de stock important
- Diamètres de piston de 16 à 100 mm
- Diverses courses standard
- Différents types de fixations
- Conception identique au vérin-bloc

Schnelllieferprogramm Quick manufacturing Production express

Seite
Page
Page



Ausgewählte Zylinder dieser Baureihe sind schnell oder ab Lager verfügbar.

As well as stock cylinders there is a certain selection of these cylinder types that can be manufactured quickly.

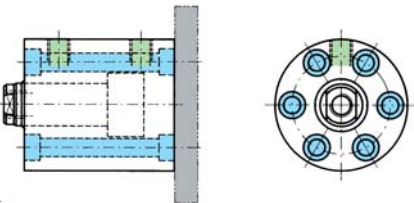
Les vérins de ce type de construction sont rapidement livrable ou alors sur stock.

3/12

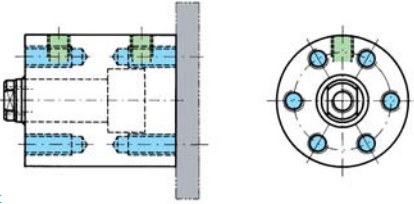
Bestellbezeichnung (Beispiel) Order specification (example) Référence de commande (exemple)

RZ 500 .50/32. 01. 201. 50

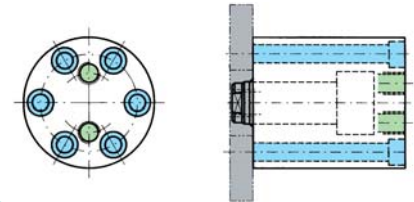
Kolben Ø Piston Ø Ø Piston	Stangen Ø (d) Rod Ø (d) Ø Tige (d)	Bauform Style Forme	Funktionsart Operation mode Mode de fonctionnement	Standardhub Standard stroke Courses standard	Option Options Options										
50	32	01	201	50											

01  3/4

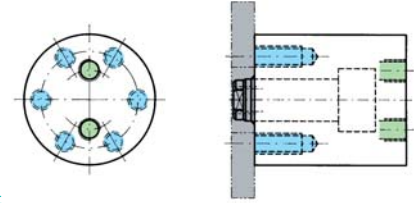
Ab Lager
From stock
Départ entrepôt

02  3/4

Ab Lager
From stock
Départ entrepôt

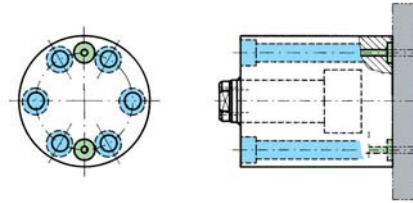
03  3/6

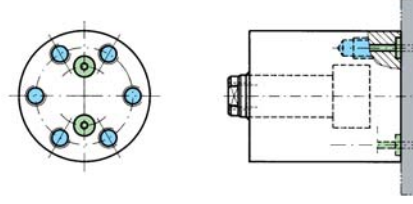
Ab Lager
From stock
Départ entrepôt

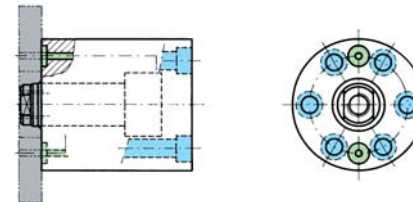
04  3/6

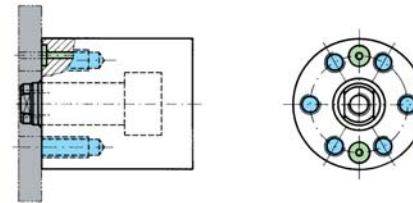
Ab Lager
From stock
Départ entrepôt

 Anschluss **Connection** **Raccordement**  Befestigungsart **Mounting mode** **Mode de fixation**

05  3/8

06  3/8

07  3/10

08  3/10

Funktionsarten **Operation mode** **Mode de fonctionnement**

201  **doppeltwirkend**
double-acting
à double effet

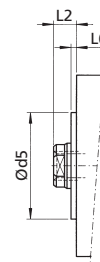
Optionen **Options** **Options**

V **Dichtungsvariante Viton®** **Viton® seal option** **Variante joints Viton®**
Werkstoff: Viton® (HFD-Flüssigkeiten) oder Temperaturbereich bis 180 °C
Material: Viton® (HDF fluids) or temperatures up to 180 °C
Matière: Viton® (fluides HDF) ou températures jusqu'à 180 °C

E **Entlüftung** **Vented Purge**
Mit Entlüftungsschrauben. Position der Entlüftungsschraube nach Rücksprache.
With vent screws. Location of vent screws customer-specified.
Avec vis de purge. Implantation de la vis de purge après accord.

Z **Mit Zentrierbund** **With centering collar** **Avec collerette de centrage**

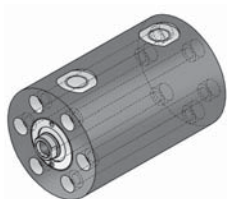
Zentrierbund centering collar collerette de centrage	Kolben Ø Piston Ø Ø Piston							
	16	25	32	40	50	63	80	100
d5 _{f7}	26	32	38	46	57	72	94	116
L6	2	2	2	2	2	2	2	2



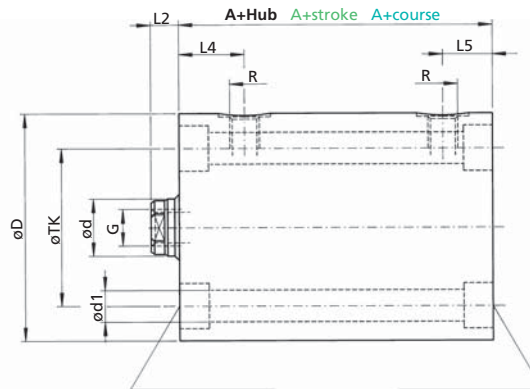
Weitere Optionen sowie Sonderausführungen nach Kundenwunsch sind bei jedem Zylindertyp grundsätzlich möglich. Bitte kontaktieren Sie uns.
Additional options and special design requirements are available upon request for each cylinder type. Please contact us!
Sur demande, toutes modifications ou modèles spécifiques selon vos souhaits sont en principe réalisables pour tous types de vérins. Veuillez nous contacter.

RZ 500 – 01 / 02

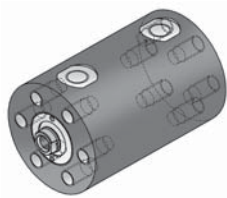
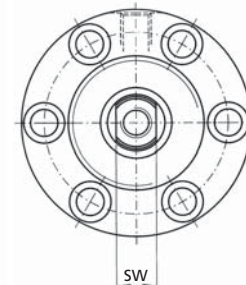
500 bar (7200 PSI)



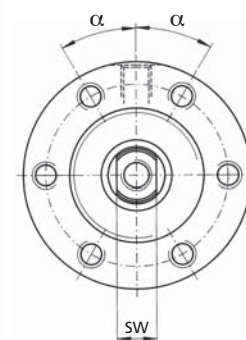
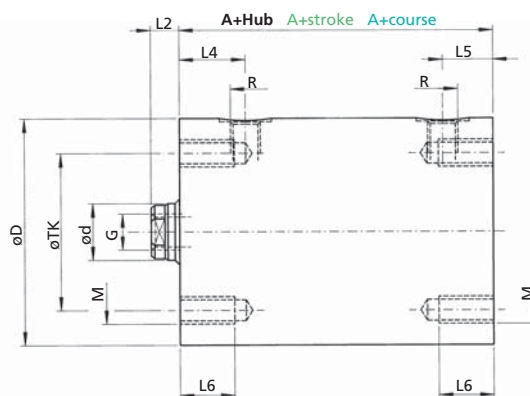
Bauform 01
Style 01
Forme 01



Senkung für DIN 912
Counterbore for DIN 912
Lamage pour DIN 912



Bauform 02
Style 02
Forme 02



Bestellbezeichnung (Beispiel)
Order specification (example)
Référence de commande (exemple)

RZ 500 50 / 32. 01. 201. 16

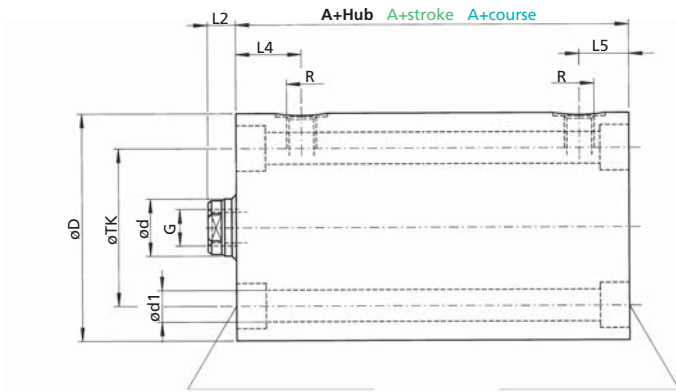
RZ 500 RZ 320

Kolben Ø Piston Ø Ø Piston	Stangen Ø (d) Rod Ø (d) Ø Tige (d)	Bauform Mounting mode Mode de fixation	Funktionsart Operation mode Mode de fonctionnement	Hub Stroke Course			Option Options Options	A	A	D	d1	L2	L4		
				Standard Standard Standard	Kundenwunsch Customer request Souhait du client										
16	10	01	02	201	16	50	≤100	–	V	50	–	60	4x6,5	6	18
20	12	01	02	201	20	50	≤100	>100–200		52	63	60	4x6,5	7	20
25	16	01	02	201	20	50	≤100	>100–200		54	70	65	6x6,5	7	20
32	20	01	02	201	25	50	≤100	>100–200		58	78	75	6x9	10	24
40	25	01	02	201	25	50	≤100	>100–200	E	62	89	90	6x11	10	25
50	32	01	02	201	25	50	≤100	>100–200		72	97	100	6x11	10	30
63	40	01	02	201	30	63	≤100	>100–200	Z	83	112	125	6x13,5	14	33
80	50	01	02	201	32	80	≤130	>130–200		95	131	160	6x17	14	41
100	60	01	02	201	40	100	≤130	>130–200		100	133	200	6x21	15	44

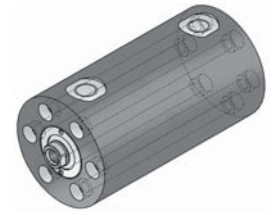
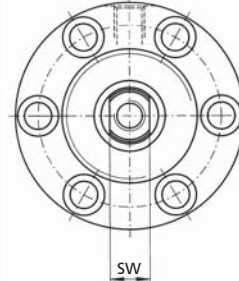
Technische Änderungen vorbehalten
Subject to change without notice
Sous réserve de modifications

Maße in mm
Dimensions in mm
Dimensions en mm

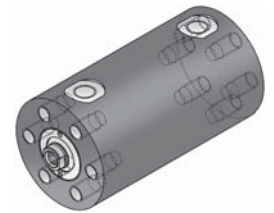
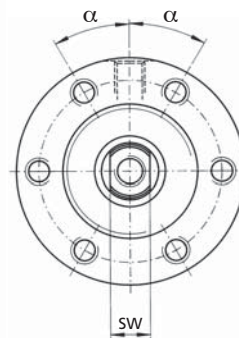
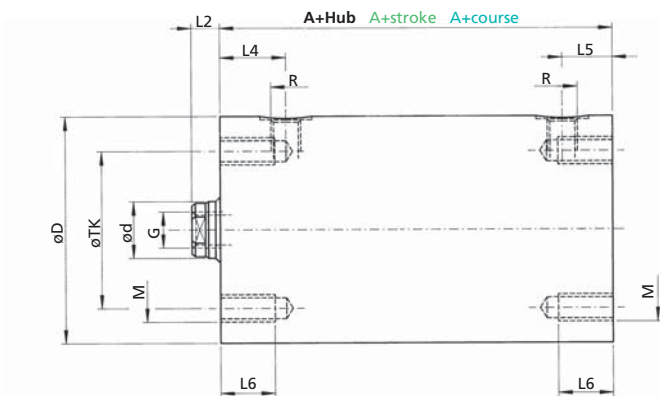
Berechnungsgrundlage siehe ahp informiert
Calculation based on "Information from AHP"
Base de calcul, voir « AHP vous informe »



Senkung für DIN 912
Counterbore for DIN 912
Lamage pour DIN 912



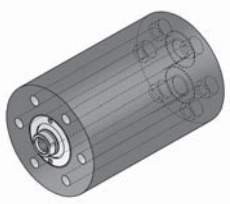
Bauform 01
Style 01
Forme 01



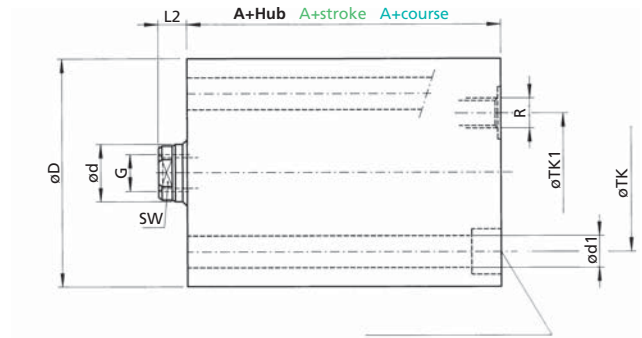
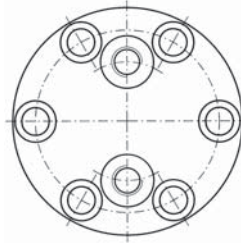
Bauform 02
Style 02
Forme 02

RZ 500 RZ 320

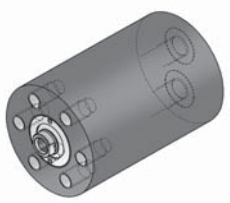
L5	L5	L6	M	α	R	SW	TK	G x Tiefe G x depth G x profondeur
18	–	15	4xM6	45°	G 1/4"	8	44	M6x12
18	20	15	4xM6	45°	G 1/4"	10	46	M8x12
18	20	15	6xM6	30°	G 1/4"	13	50	M10x15
19	24	18	6xM8	30°	G 1/4"	17	58	M12x15
19	25	18	6xM10	30°	G 1/4"	21	70	M16x25
19	30	20	6xM10	30°	G 1/4"	26	80	M20x30
23	33	20	6xM12	30°	G 1/2"	32	100	M27x40
25	41	25	6xM16	30°	G 1/2"	41	130	M30x40
28	44	30	6xM20	30°	G 1/2"	–	160	M42x60



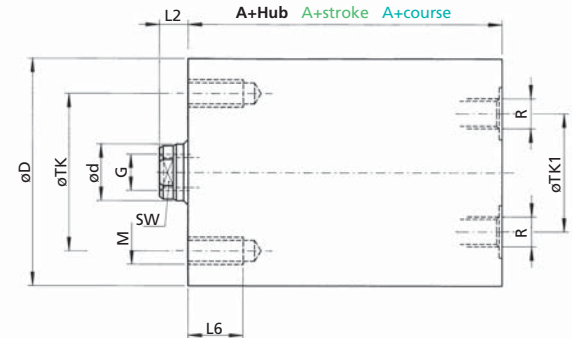
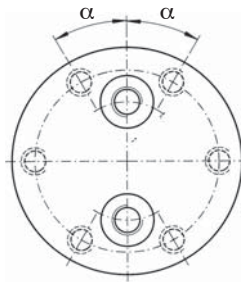
Bauform 03
 Style 03
 Forme 03



Senkung für DIN 912
 Counterbore for DIN 912
 Lamage pour DIN 912



Bauform 04
 Style 04
 Forme 04



Bestellbezeichnung (Beispiel)
 Order specification (example)
 Référence de commande (exemple)

RZ 500 50 / 32. 03. 201. 16
 RZ 320

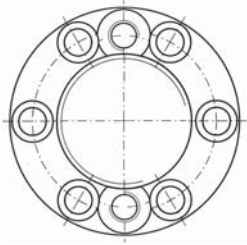
RZ 500 RZ 320

Kolben Ø Piston Ø Ø Piston	Stangen Ø (d) Rod Ø (d) Ø Tige (d)	Bauform Mounting mode Mode de fixation	Funktionsart Operation mode Mode de fonctionnement	Hub Stroke Course			Option Options Options	A	A	D	d1	L2	L6	
				Standard Standard Standard		Kundenwunsch Customer request Souhait du client								
				1	2	RZ 500								RZ 320
16	10	03 04	201	16	50	≤100	-	V	50	-	60	4x6,5	6	15
20	12	03 04	201	20	50	≤100	>100-200		52	-	60	4x6,5	7	15
25	16	03 04	201	20	50	≤100	>100-200		54	-	65	6x6,5	7	15
32	20	03 04	201	25	50	≤100	>100-200		58	78	75	6x9	10	18
40	25	03 04	201	25	50	≤100	>100-200	E	62	89	90	6x11	10	18
50	32	03 04	201	25	50	≤100	>100-200		72	97	100	6x11	10	20
63	40	03 04	201	30	63	≤100	>100-200	Z	83	112	125	6x13,5	14	20
80	50	03 04	201	32	80	≤130	>130-200		95	131	160	6x17	14	25
100	60	03 04	201	40	100	≤130	>130-200		100	133	200	6x21	15	30

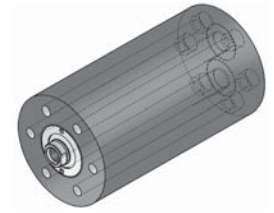
Technische Änderungen vorbehalten
 Subject to change without notice
 Sous réserve de modifications

Maße in mm
 Dimensions in mm
 Dimensions en mm

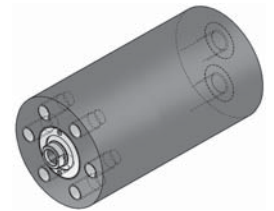
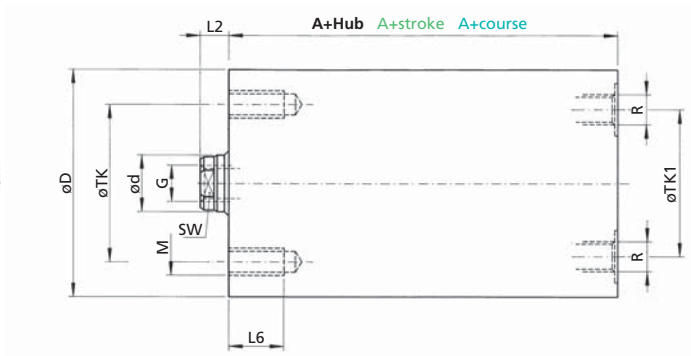
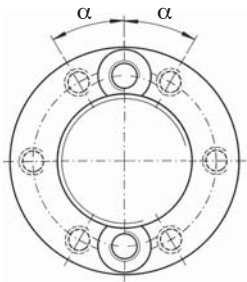
Berechnungsgrundlage siehe ahp informiert
 Calculation based on "Information from AHP"
 Base de calcul, voir « AHP vous informe »



Senkung für DIN 912
 Counterbore for DIN 912
 Lamage pour DIN 912

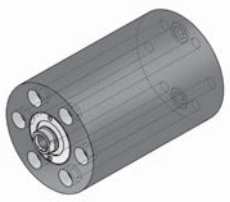


Bauform 03
 Style 03
 Forme 03

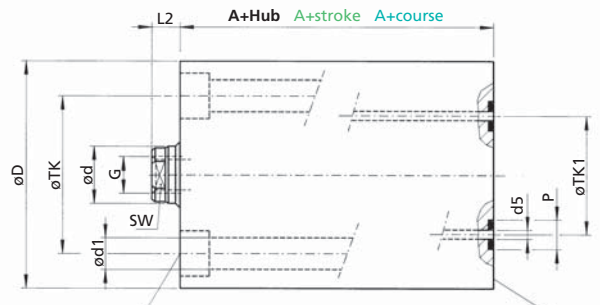
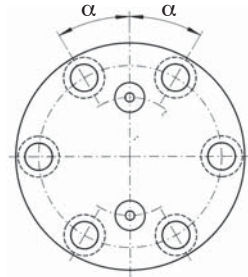


Bauform 04
 Style 04
 Forme 04

M	α	RZ 500 RZ 320		SW	TK	RZ 500 RZ 320		G x Tiefe G x depth G x profondeur
		R	R			TK 1	TK1	
4xM6	45°	G 1/4"	–	8	44	28	–	M6x12
4xM6	45°	G 1/4"	–	10	46	32	–	M8x12
6xM6	30°	G 1/4"	–	13	50	26	–	M10x15
6xM8	30°	G 1/4"	G 1/8"	17	58	36	58	M12x15
6xM10	30°	G 1/4"	G 1/4"	21	70	44	70	M16x25
6xM10	30°	G 1/4"	G 1/4"	26	80	56	80	M20x30
6xM12	30°	G 1/2"	G 3/8"	32	100	68	100	M27x40
6xM16	30°	G 1/2"	G 1/2"	41	130	98	130	M30x40
6xM20	30°	G 1/2"	G 1/2"	–	160	110	160	M42x60

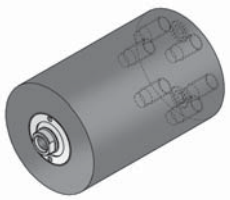


Bauform 05
 Style 05
 Forme 05

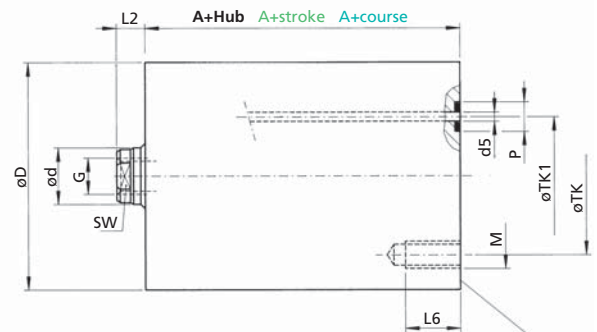
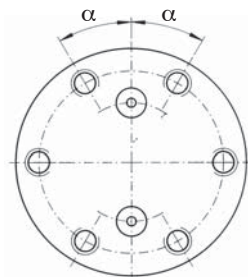


Senkung für DIN 912
 Counterbore for DIN 912
 Lagage pour DIN 912

Gegenfläche $R_a = 0,8$ oder besser
 Contact surface minimum $R_a = 0,8$
 Etat de surface $R_a = 0,8$ minimum



Bauform 06
 Style 06
 Forme 06



Gegenfläche $R_a = 0,8$ oder besser
 Contact surface minimum $R_a = 0,8$
 Etat de surface $R_a = 0,8$ minimum

Bestellbezeichnung (Beispiel)
 Order specification (example)
 Référence de commande (exemple)

RZ 500 50 / 32. 05. 201. 16
 RZ 320

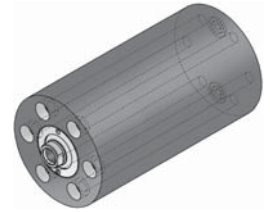
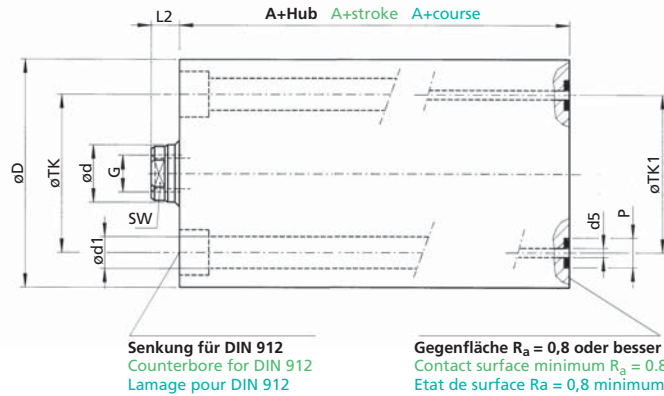
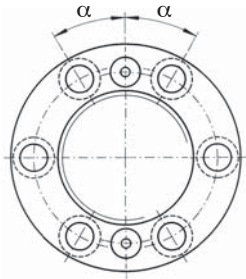
RZ 500 RZ 320

Kolben Ø Piston Ø Ø Piston	Stangen Ø (d) Rod Ø (d) Ø Tige (d)	Bauform Mounting mode Mode de fixation	Funktionsart Operation mode Mode de fonctionnement	Hub Stroke Course			Option Options Options	A	A	D	d1	d5	L2	L6		
				Standard Standard Standard		Kundenwunsch Customer request Souhait du client										
				1	2	RZ 500									RZ 320	
16	10	05	06	201	16	50	≤100	–	V	50	–	60	4x6,5	3,5	6	15
20	12	05	06	201	20	50	≤100	>100–200	V	52	–	60	4x6,5	4	7	15
25	16	05	06	201	20	50	≤100	>100–200	V	54	70	65	6x6,5	4	7	15
32	20	05	06	201	25	50	≤100	>100–200	V	58	78	75	6x9	4	10	18
40	25	05	06	201	25	50	≤100	>100–200	E	62	89	90	6x11	4	10	18
50	32	05	06	201	25	50	≤100	>100–200	E	72	97	100	6x11	5	10	20
63	40	05	06	201	30	63	≤100	>100–200	Z	83	112	125	6x13,5	6	14	20
80	50	05	06	201	32	80	≤130	>130–200	Z	95	131	160	6x17	6	14	25
100	60	05	06	201	40	100	≤130	>130–200	Z	100	133	200	6x21	8	15	30

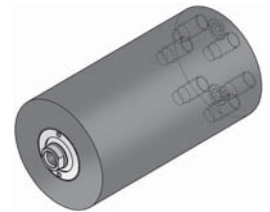
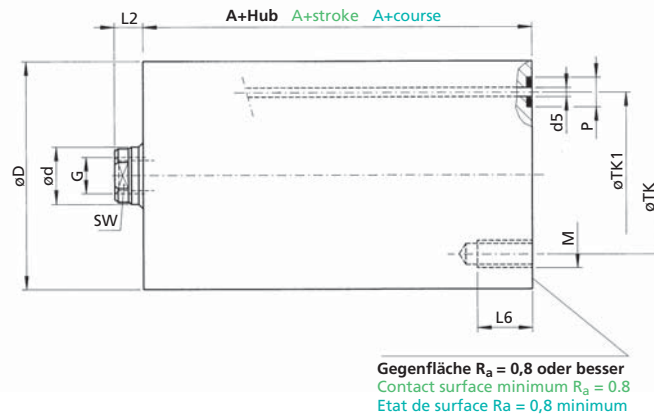
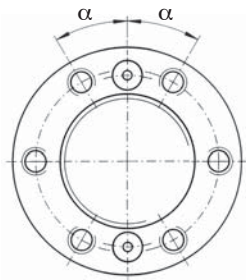
Technische Änderungen vorbehalten
 Subject to change without notice
 Sous réserve de modifications

Maße in mm
 Dimensions in mm
 Dimensions en mm

Berechnungsgrundlage siehe ahp informiert
 Calculation based on "Information from AHP"
 Base de calcul, voir « AHP vous informe »



Bauform 05
Style 05
Forme 05

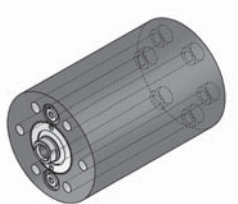


Bauform 06
Style 06
Forme 06

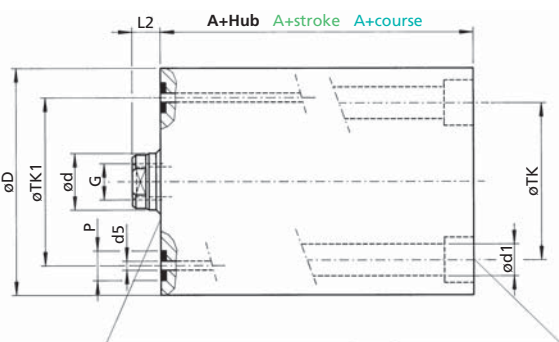
RZ 500 RZ 320

M	α	P	SW	TK	TK1	TK1	G x Tiefe G x depth G x profondeur	O-Ring* O-seal* Joint torique*
4xM6	45°	10,6	8	44	28	–	M6x12	7x1,5
4xM6	45°	12	10	46	30	–	M8x12	8x2
6xM6	30°	13	13	50	40	50	M10x15	9x2
6xM8	30°	13	17	58	44	58	M12x15	9x2
6xM10	30°	13	21	70	52	70	M16x25	9x2
6xM10	30°	13	26	80	64	76	M20x30	9x2
6xM12	30°	13	32	100	80	100	M27x40	9x2
6xM16	30°	13	41	130	100	130	M30x40	9x2
6xM20	30°	15	–	160	120	160	M42x60	10x2

* Wird mitgeliefert
* Is included
* Est inclus

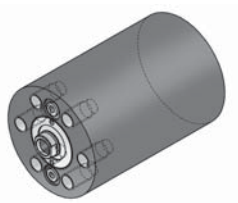
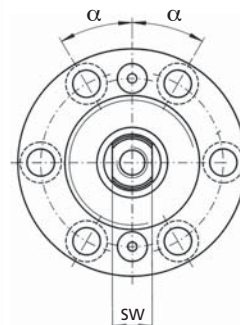


Bauform 07
 Style 07
 Forme 07

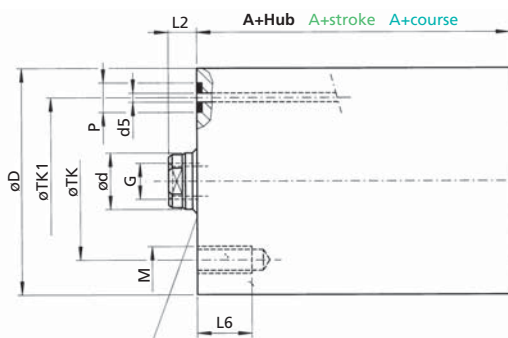


Gegenfläche $R_a = 0,8$ oder besser
 Contact surface minimum $R_a = 0.8$
 Etat de surface $R_a = 0,8$ minimum

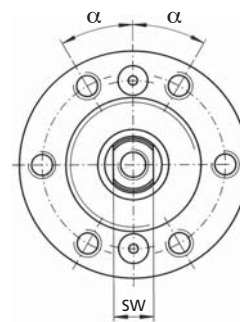
Senkung für DIN 912
 Counterbore for DIN 912
 Lamage pour DIN 912



Bauform 08
 Style 08
 Forme 08



Gegenfläche $R_a = 0,8$ oder besser
 Contact surface minimum $R_a = 0.8$
 Etat de surface $R_a = 0,8$ minimum



Bestellbezeichnung (Beispiel)
 Order specification (example)
 Référence de commande (exemple)

RZ 500 50 / 32. 07. 201. 16

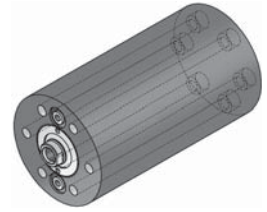
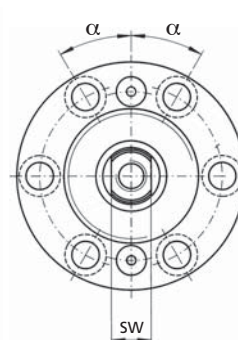
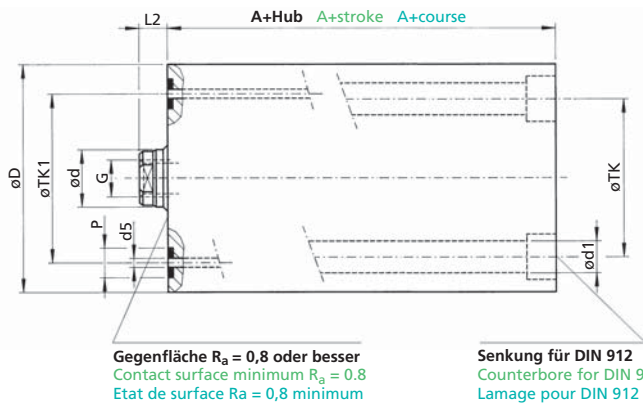
RZ 500 RZ 320

Kolben Ø Piston Ø Ø Piston	Stangen Ø (d) Rod Ø (d) Ø Tige (d)	Bauform Mounting mode Mode de fixation	Funktionsart Operation mode Mode de fonctionnement	Hub Stroke Course				Option Options Options	A	A	D	d1	d5	L2	L6	
				Standard Standard Standard		Kundenwunsch Customer request Souhait du client										
				1	2	RZ 500	RZ 320									
16	10	07 08	201	16	50	≤100	–	V	50	–	60	4x6,5	3,5	6	15	
20	12	07 08	201	20	50	≤100	>100–200		52	63	60	4x6,5	4	7	15	
25	16	07 08	201	20	50	≤100	>100–200		54	70	65	6x6,5	4	7	15	
32	20	07 08	201	25	50	≤100	>100–200		58	78	75	6x9	4	10	18	
40	25	07 08	201	25	50	≤100	>100–200		E	62	89	90	6x11	4	10	18
50	32	07 08	201	25	50	≤100	>100–200			72	97	100	6x11	5	10	20
63	40	07 08	201	30	63	≤100	>100–200		Z	83	112	125	6x13,5	6	14	20
80	50	07 08	201	32	80	≤130	>130–200			95	131	160	6x17	6	14	25
100	60	07 08	201	40	100	≤130	>130–200	100		133	200	6x21	8	15	30	

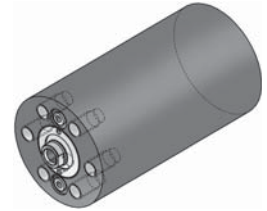
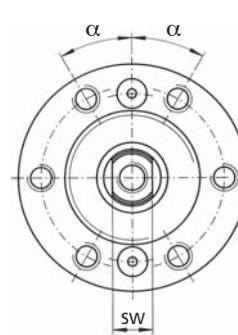
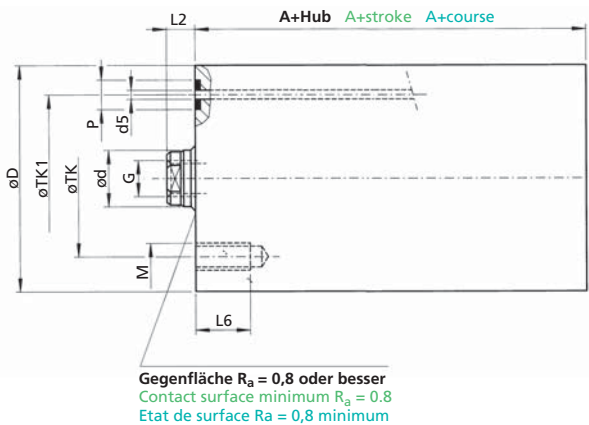
Technische Änderungen vorbehalten
 Subject to change without notice
 Sous réserve de modifications

Maße in mm
 Dimensions in mm
 Dimensions en mm

Berechnungsgrundlage siehe ahp informiert
 Calculation based on "Information from AHP"
 Base de calcul, voir « AHP vous informe »



Bauform 07
Style 07
Forme 07



Bauform 08
Style 08
Forme 08

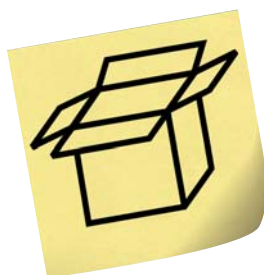
M	α	P	SW	TK	TK1	G x Tiefe G x depth G x profondeur	O-Ring* O-seal* Joint torique*
4xM6	45°	10,6	8	44	42	M6x12	7x1,5
4xM6	45°	12	10	46	46	M8x12	8x2
6xM6	30°	13	13	50	50	M10x15	9x2
6xM8	30°	13	17	58	58	M12x15	9x2
6xM10	30°	13	21	70	70	M16x25	9x2
6xM10	30°	13	26	80	76	M20x30	9x2
6xM12	30°	13	32	100	100	M27x40	9x2
6xM16	30°	13	41	130	130	M30x40	9x2
6xM20	30°	15	–	160	160	M42x60	10x2

* Wird mitgeliefert
* Is included
* Est inclus

Schnelllieferprogramm RZ 500

Quick delivery programme RZ 500

Programme de livraison express RZ 500



Express

Für ausgewählte Zylinder bieten wir eine besonders schnelle Lieferung*, da wir diese bereits vorgefertigt für Sie an Lager halten.

* Sofern Lagerbestand ausreichend.

Selected cylinders we have pre-fabricated in stock and can thus offer fast delivery times*.

* As long as stocks last.

Pour les vérins sélectionnés, nous proposons une livraison particulièrement rapide*, car nous les tenons en stock déjà pré-fabriqués pour vous.

* Dans la limite des stocks disponibles.

Schnellzugriff über Artikelnummer Quick access via item number Accès rapide grâce au numéro d'article

Bauform* Style* Forme*	RZ 500.16/10			RZ 500.26/16			RZ 500.32/20			RZ 500.40/25			RZ 500.50/32		
	Hub	Stroke	Course	Hub	Stroke	Course	Hub	Stroke	Course	Hub	Stroke	Course	Hub	Stroke	Course
	16		50												
01	014396		014397	014419		014420	014440		014441	014474		014475	014506		014507
02	014398		186367	014421		014422	014442		014443	049409		028324	014508		014509
03	045938		049682	014423		048594	014445		014446	014476		014502	027654		049684
04	029018		186368	186370		186372	014447		186374	137190		065149	109038		047561
05	066025		057573	014425		048583	028322		059258	051232		034947	035596		042892
06	060863		081022	014426		036522	014451		059499	055732		060401	052641		056493
07	038062		076762	033411		061088	028638		028323	014479		047414	014510		027126
08	186366		042361	186371		186373	046653		186375	035429		033481	059019		186376

* Siehe Seite 3/3
* See page 3/3
* Voir page 3/3



RZ 500.63/40

Hub	Stroke	Course
30		63
014524		014525
014526		048015
038006		040997
014529		186377
060099		094954
014530		140091
014531		127292
014532		127591

Ersatzteile RZ

Dichsatz komplett Seal kit complete Pochette de joints complete



Bauform*
Style*
Forme*

- 01
- 02
- 03
- 04
- 05
- 06
- 07
- 08

Kolben Ø Piston Ø Ø Piston	Funktionsart Operation mode Mode de fonctionnement	RZ 500		RZ 320	
		Standard-Dichsatz Standard seal kit Pochette de joints standard		Viton®-Dichsatz Viton®-seals Pochette de joints Viton®	
		Art.-Nr. Part number Numéro d'article	Art.-Nr. Part number Numéro d'article	Art.-Nr. Part number Numéro d'article	Art.-Nr. Part number Numéro d'article
16	201	013286	-	013287	-
25	201	013322	078330	013323	062268
32	201	013411	053528	013412	068144
40	201	013543	051110	026816	063236
50	201	013676	053426	013677	054920
63	201	013832	053077	013833	070150
80	201	013963	026245	013964	070151
100	201	014059	061489	035442	109676

* Siehe Seite 3/3
* See page 3/3
* Voir page 3/3

Alle Dichsätze ab Lager lieferbar
All seal kits in stock
Toutes les pochettes de joints sont disponibles sur stock


Maße in mm
Dimensions in mm
Dimensions en mm

Verschraubung komplett mit Dichtungen Rod guide complete including seals
 Cartouche complète avec joints



Bauform*
 Style*
 Forme*

- 01
- 02
- 03
- 04
- 05
- 06
- 07
- 08

Kolben Ø Piston Ø Ø Piston	Funktionsart Operation mode Mode de fonctionnement	Standard-Verschraubung Rod guide complete Standard Cartouche standard	Viton®-Verschraubung Rod guide complete Viton® Cartouche Viton®
		Art.-Nr. Part number Numéro d'article	Art.-Nr. Part number Numéro d'article
16	201	042485	080806
25	201	092861	097101
32	201	041671	057340
40	201	041752	044272
50	201	042986	070826
63	201	042987	078328
80	201	044046	058371
100	201	044047	078329

* Siehe Seite 3/3
 * See page 3/3
 * Voir page 3/3

Alle Verschraubungen ab Lager lieferbar
 All rod guides in stock
 Toutes les cartouches sont disponibles sur stock

Maße in mm
 Dimensions in mm
 Dimensions en mm