


REMARK!

Detailed performance data and additional hydraulic specifications may be drawn from the data sheets of the corresponding installed pressure relief cartridge.

CAUTION!


The performance data especially the „**pressure-flow-characteristic**„ on the data sheets of the screw-in cartridges refer to the screw-in cartridges only. The additional pressure drop of the flange body respectively sandwich body must be taken into consideration.

SCREW-IN CARTRIDGES INSTALLED

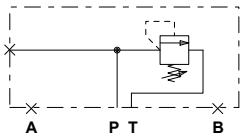
The following screw-in cartridges are used in either the flange body or the sandwich body:

Type	Designation	Data sheet no.
BV.PM22	Pressure relief valve • pilot operated	2.1-530
BA.PM22	Pressure relief valve • direct operated	2.1-540
BK.PM22	Pressure relief valve • direct operated	2.1-542

TYPES / DIMENSIONS

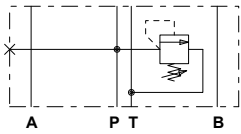
Flange construction

B..FA06-P

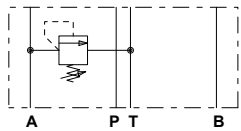


Sandwich construction

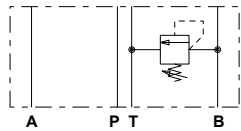
B..SA06-P



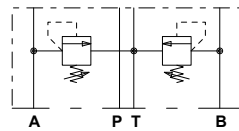
B..SA06-A



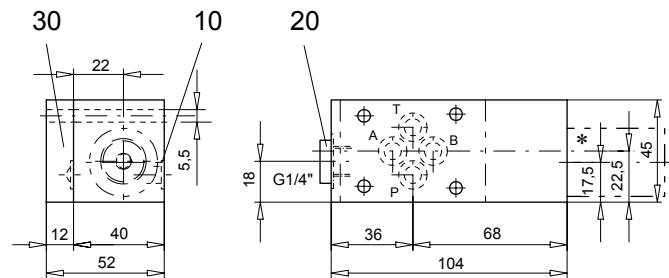
B..SA06-B



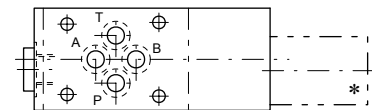
B..SA06-AB



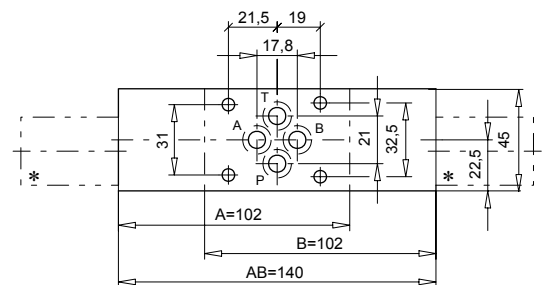
Flange construction



Sandwich construction in P



Sandwich construction in A, B or AB


PARTS LIST

Position	Article	Description
10	160.2093	O-ring ID 9,25x1,78
20	238.2406	Plug VSTI G1/4"-ED (only for flange and sandwich plate P)
30	173.3150	Blindplate ABP6 (only for flansch)

* The exterior dimensions or the cartridges can be obtained from the corresponding data sheets

Technical explanation see data sheet 1.0-100