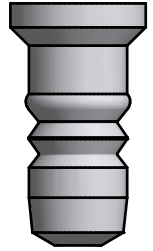


# MEMBRANE PTFE W9/SIMPLEX

ART. NO. 850055

## GENERAL

- KEOFITT has the widest selection of spare parts and accessories to complete your sampling system
- Compatible with all KEOFITT W9 & Simplex valve heads for PTFE membrane
- The patented membrane design is an essential part of the hygienic design of the KEOFITT sampling valves
- It allows for optimal exposure to CIP and SIP media while also integrating the capacity to remove the membrane from the valve head without the use of tools



## FEATURES

- Compatible with all KEOFITT W9 & Simplex valve heads for PTFE membrane

## CERTIFICATION\*

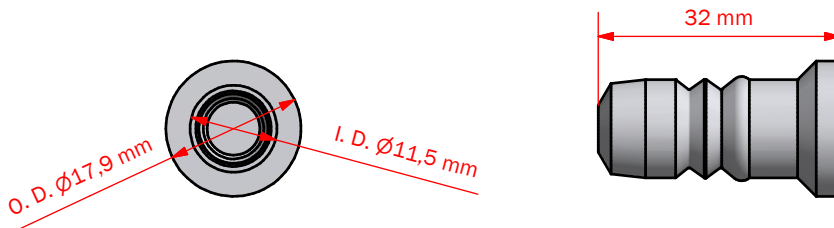
· EU EC 1935/2004 · EU EC 2023/2006 · EU EC 10/2011 · DK No.822 06/2013 · FDA CFR 21 §177.1550 · USP Class VI  
· REACH · RoHS · ADI Free · Keofitt DoC

## TECHNICAL DATA

Type:	PTFE (TFM 1705 - white)
Tensile strength (psi):	4800
Elongation at break (%):	450
Density (g/cc):	2,16
Service Temperature Range (°C/°F):	-200 - +260 / -328 - +500
Deformation under Load (%):	
2175 psi - 24 h	9
2175 psi - 100 h	10
2175 psi - permanent	4,5
Flammability, UL94	V-0
Melt point, initial (°C):	342 ±10
Net weight (kg/lbs):	0,004 kg /0,01 lbs

## SERVICE TIME

Average service life of a PTFE membrane is 12 months, but depends very much on operating conditions and choice of cleaning method and sterilization - actual life expectancy must be experimentally determined by the user.



# MEMBRANES W9 & SIMPLEX

## Silicone



600051

## EPDM



600052

## PTFE



850055

### Part of valve head

600041	600041E	855541
600042	600042E	855542
600043	600043E	855543
600044	600044E	855544
600047	600047E	855547
830141	830141EPDM	830141PTFE
830144	830144EPDM	830144PTFE
831141	831141EPDM	831141PTFE
831144	831144EPDM	831144PTFE
832141	832141EPDM	832141PTFE
832144	832144EPDM	832144PTFE
832241	832241EPDM	832241PTFE
832244	832244EPDM	832244PTFE

### Part of spare part kit

776041	776041EPDM	778541
776044	776044EPDM	778544
778301	778301EPDM	778301PTFE
778344	778344EPDM	778344PTFE