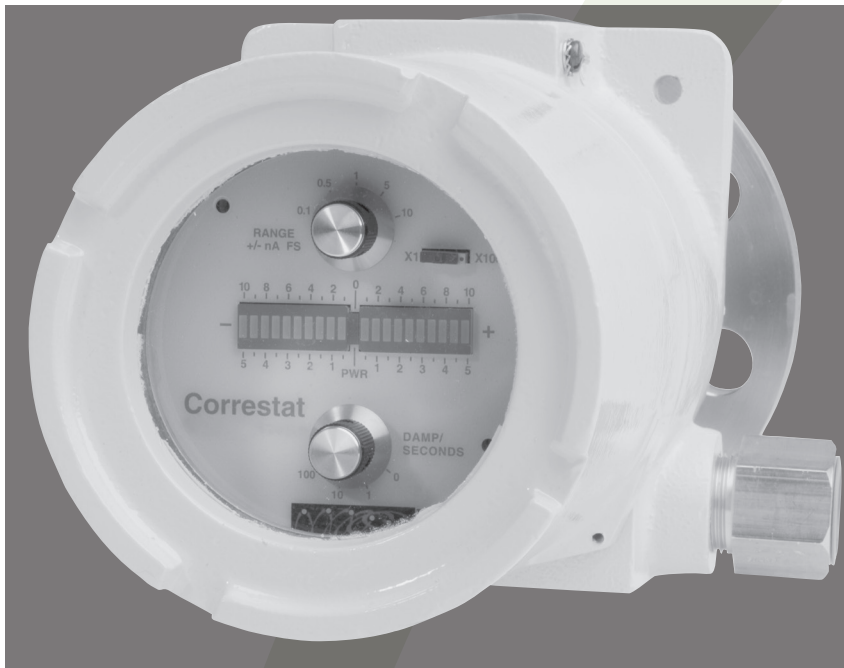


# Correstat™ 3430

Catalyst feed sensor



The Correstat3430 electrostatic sensor monitors conditions within gas phase catalyst feed lines. It can monitor catalyst pulses and feeder changes, allowing plant operators to take appropriate action to avoid problems. With the real-time feedback from these electrostatic charge measurements, process continuity can be improved and shutdowns prevented.

The Correstat3430 ring sensor is installed directly in the catalyst feed line. The sensor ID can be customized to fit existing lines. The Correstat3430 is typically provided in a remote configuration to allow for a variety of process and mounting requirements.

## Benefits

- User selectable sensitivity, range, and smoothing settings
- Real-time bipolar measurement
- No artificially high voltage source
- Measures current
- No maintenance or spare parts required

## Advantages

- Compact
- Custom-designed sensor for easy low-cost installation
- Intrinsically safe design

# Specifications

## Mechanical

Standard line ID: 8 mm, 10 mm typical  
(others available)

Swagelok or flange mounting  
(150 or 300 lb typical)

All metals exposed to reactor are stainless steel

Pressure tested up to at least 750 psi  
(higher pressure systems available)

## Operating temperatures

Ring sensor ambient to 60°C

Electronics: ambient

Consult LexMar Global for high temperature applications

## Electronics Enclosure

Two 3/4" NPT hubs for power and analog output signal

Cylindrical enclosure is 5.6" (14.3 cm) in diameter, 7.6" (19.4 cm) long

Designed NEMA 4/7/9, approved EEx d ia IIC T4

## Electrical

120/230 VAC 50/60 Hz or 24 VDC

Frequency response: 0 – 100Hz

Intrinsically safe sensor

4 – 20mA bipolar output

Full scale output selectable in 9 steps from  $\pm 0.1$  to  $\pm 1000$ nA of  
electrostatic current

Signal damping selectable at 0, 1, 10, or 100 seconds

## Display

20 segment LED bar graph to indicate real time bipolar signal  
(10 negative, 10 positive segments) with green LED power indicator  
in the center

5 position full scale current range adjustment switch with an  
additional X100 switch

4 position signal smoothing switch

All controls and indicators viewable through window in enclosure

# LexMarGlobal