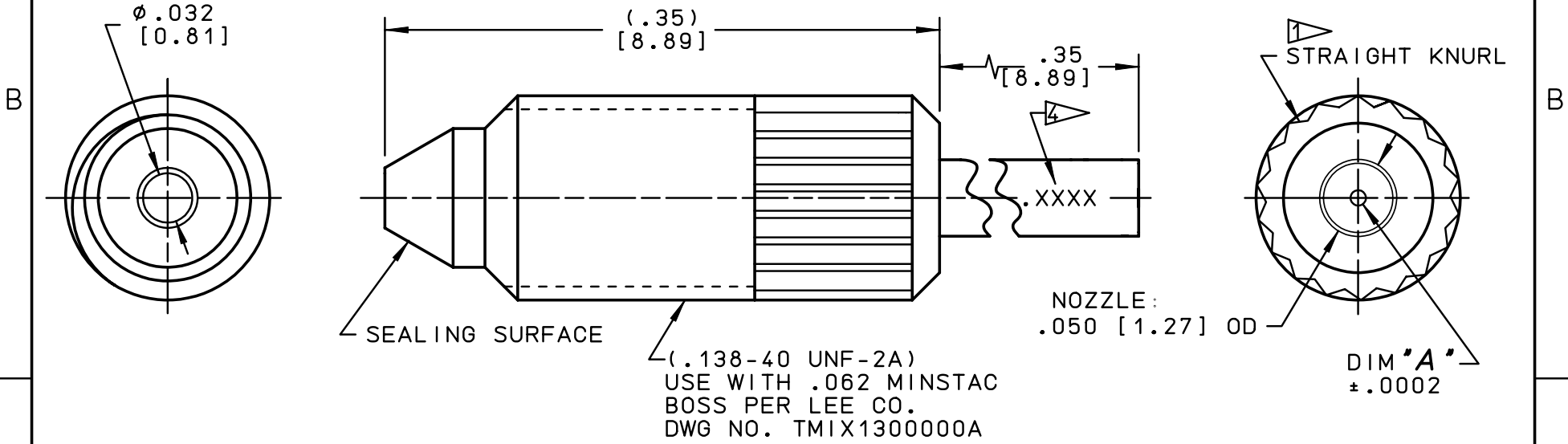


DWG. NO.
INZA0400000A

PROPRIETARY ITEM
This document contains proprietary information and is submitted upon the express conditions that the information contained herein will not be used directly or indirectly in any way detrimental to the interests of the Lee Company, and/or in violation of regulation DAR 7-104.9 (a) (1 JULY 1974). et seq.

ALT.	DATE	BY	DESCRIPTION
A	06-07-2006	RJC	INITIAL RELEASE



- 4 LASER MARKING VIEW FOR DIMENSION A
3 LOHM RATING IS TYPICAL (5 psig WATER). VERIFY FLOWS PER APPLICATION.
2. WETTED MATERIALS: EPOXY, 303, 304 SS, SYNTHETIC SAPPHIRE.
1 TORQUE TO 5-10 ozf-in, USE LEE CO. WRENCH PART NUMBER TTTA3201243A.
- NOTES:

NOZZLE PART NUMBER	REV.	DIMENSION 'A'	FLUID RESISTANCE (LOHMS NOMINAL)
INZA4710975H	A	.0100 ID	7,500
INZA4670915K	A	.0075 ID	15,400
INZA4650935K	A	.0050 ID	35,000
INZA4640960K	A	.0040 ID	60,000
INZA4630912T	A	.0030 ID	125,000
INZA4620928T	A	.0020 ID	280,000

UNLESS OTHERWISE SPECIFIED DIMENSIONS ARE IN INCHES [mm] TOLERANCES: .XX $\pm .015$ [0.38] .XXX $\pm .005$ [0.13] ANGLES $\pm 2^\circ$ INT CORNER R .01 [0.25] MAX	DRAWN	RJC	06-07-2006	TITLE NOZZLE-.062-JEWELED-OMNIBUS									
	CHK'D			THE LEE COMPANY ESSEX, CT									
APP'D			<table border="1"> <tr> <td>SIZE</td> <td>CODE IDENT. NO.</td> <td>DWG. NO.</td> <td>REV.</td> </tr> <tr> <td>A</td> <td>ONZR4</td> <td>INZA0400000A</td> <td>A</td> </tr> </table>				SIZE	CODE IDENT. NO.	DWG. NO.	REV.	A	ONZR4	INZA0400000A
SIZE	CODE IDENT. NO.	DWG. NO.	REV.										
A	ONZR4	INZA0400000A	A										
NOTES AND DIMENSIONS SHOWN HEREON ARE FOR INSPECTION IDENTIFICATION ONLY. ALL MANUFACTURING RIGHTS ARE RESERVED.	MAT. SEE NOTE 2			SCALE: 10/1									
REF. NO.	H.T.			SHEET 1 OF 1									
THIRD ANGLE PROJECTION	FINISH												