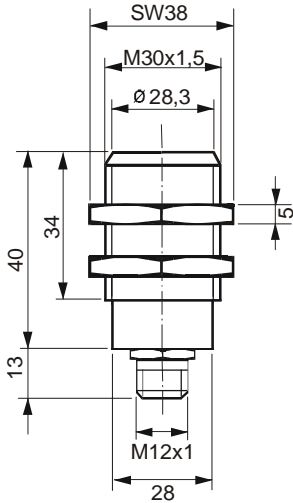


DOUBLE SHEET DETECTOR E20

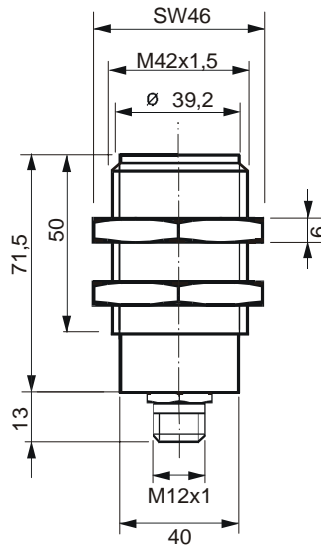
Sensors:

It is recommended to use the sensors P30GS, P42AGS and P75VGS with the control unit E20. The connection of the older P36GS, P42GS and P75GS sensors is also possible.

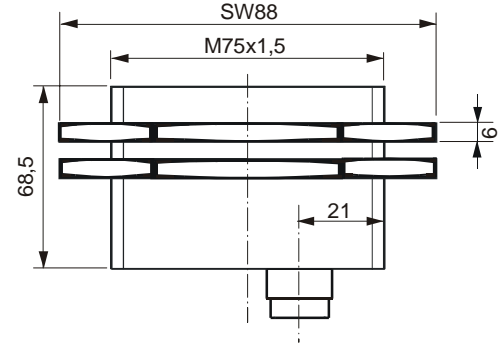
P30GS



P42AGS / P42GS*



P75VGS / P75GS



* The dimensions of the sensors (P42AGS / P42GS) are identical with the exception of the connector.

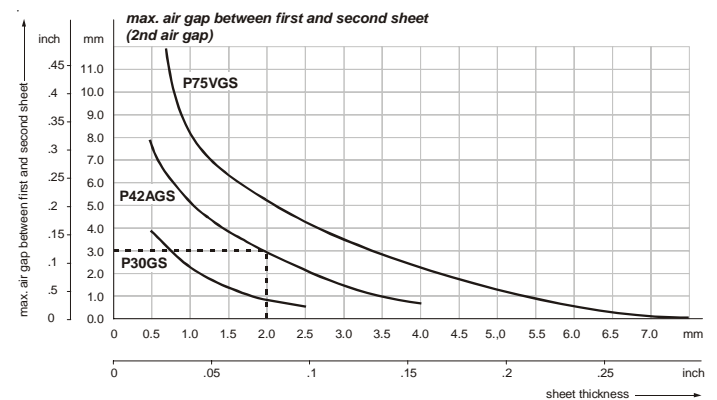
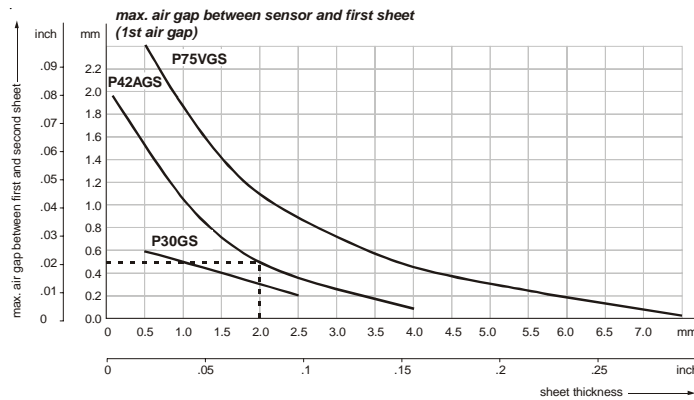
Air gap behavior:

The new Double Sheet Detector E20 has a much improved air gap tolerance especially in conjunction with the new sensor P42AGS. There are two types of air gaps in case of double sheet control. First there is the air gap between sensor and sheet surface (1st air gap) and the air gap between the first sheet and the second sheet (2nd air gap). The diagrams show the relationship.

Example for 1st air gap with sensor P42AGS: According to the diagram, if processing a sheet of 2.0 mm (.08 in.) an air gap of 0.5 mm (.02 in.) can be tolerated with a double sheet threshold of 120 %.

Example for 2nd air gap and sensor P42AGS with 2.0 mm (.08 in.) sheet thickness and a double sheet threshold of 120 %; an air gap of up to 3.0 mm (.12 in.) can be tolerated.

Attention ! The performance data of both diagrams **cannot** be combined !



Measurement time:

The table to the right shows the reaction time of the system when detecting double sheet with the maximum sheet thickness applicable to each sensor and a selected upper switching limit of 120%.

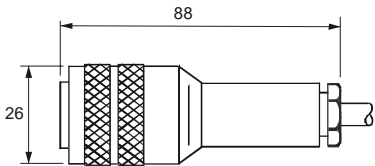
The times for 2, 3 and 4 sensors apply to the **sequenzer mode**.

Sensor	max. sheet thickness [mm] / [inch]	Measurement time [ms] with max. sheet thickness and 120 % double sheet threshold			
		1 Sensor	2 Sensors	3 Sensors	4 Sensors
P30GS	2.5 / .1	100	150	195	245
P42GS	4 / .16	140	230	310	410
P42AGS	4 / .16	145	215	305	385
P75VGS	6.5 / .25 (8 / .315)*	450	860	1280	1680

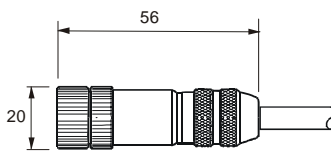
*with restriction

Sensor cable:

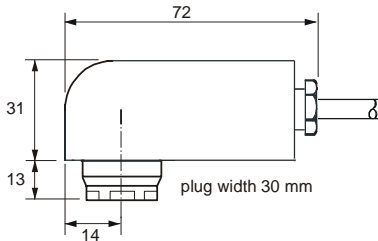
Cable: **CPS-5-G Oil** for P42GS and P75VGS
straight receptacle



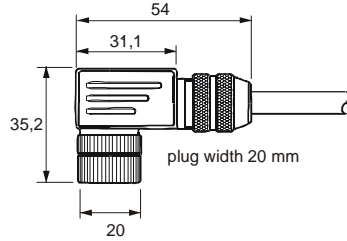
Cable: **CPM12S-G** for P30GS and P42AGS
straight receptacle



Cable: **CPS-5-W Oil**
right angle receptacle



Cable: **CPM12S-W**
right angle receptacle



Sensor cable for fieldbus-technology see operating manual

Order data:

Control unit for the connection of one sensor:
 E20-B-R Control via PLC
 E20-B-O Control via PLC
 E20-C-O Download, control via PLC
 E20-PR-S* Control via Profibus

Relay Version
 Optocoupler Version
 Optocoupler Version

Control unit for the connection of up to 4 sensors:

E20-4P-B-R Control via PLC
 E20-4P-B-O Control via PLC
 E20-4P-C-O Download, Control via PLC
 E20-4P-PR-S* Control via Profibus

Relay Version
 Optocoupler Version
 Optocoupler Version

*all common fieldbus technologies are available

Sensors:

P30GS Electromagnet up to 2.5 mm single sheet thickness (The sensor P30GS should only be used in case of confined space situations. The standard sensor should be P42AGS)
 P42GS Electromagnet up to 4.0 mm single sheet thickness
 P42AGS Electromagnet up to 4.0 mm single sheet thickness
 P75VGS Electromagnet up to 6.5 mm single sheet thickness

Sensor cable:

for P30GS and P42AGS:

CPM12S-G Straight receptacle, standard length 5 m
 CPM12S-W Right angle receptacle, standard length 5 m
 SM12CPM12S-GG Fieldbus technology, straight receptacle
 SM12CPM12S-GW Fieldbus technology, right angle receptacle

for all other sensors:

CPS-5-G Oil Straight receptacle, standard 5 m
 CPS-5-W Oil Right angle receptacle, standard 5 m
 SCPM12S-GG Fieldbus technology, straight receptacle
 SCPM12S-GW Fieldbus technology, right angle recept.

Cable up to 25 m made to order, for longer cables enquire

Special accessoires:

SH42GS Spring loaded sensor bracket for P42GS and P42AGS
 SHS42GS Spring loaded sensor bracket with vacuum cup for P42GS and P42AGS
 SHK Clamping bracket
 2395110 Rubber lips for vacuum suction cup
 PWS E10 Program selection box, also for E20 suitable
 RPP Software for parameter back up on a PC (Version C only)

Sensor bracket:

Spring loaded sensor bracket with vacuum cup SHS for sensor P42(A)GS (also available without vacuum cup as type SH...GS)

