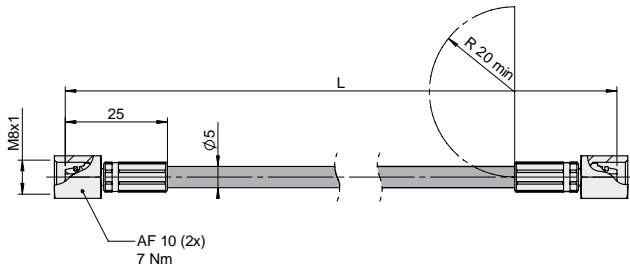




Micro EO24™ Hose and Tube System

Micro EO24™ Hose and Tube System

The Micro EO24™ Hose and Tube System is our most compact, soft sealed gas linking system. It is flexible and takes full benefit of the two integrated metal and soft sealing systems. This ensures double leak proof joints as well as rotational protection. G1/8" and G1/4" ports can also be connected to the Micro EO24™ with the use of an appropriate adapter.



The Micro EO24™ Hose is a Dual Seal System and our most compact hose system available. A number of different standard hose lengths are available (see table below). Custom hose lengths can also be ordered from 100 mm upwards.

Hose, Order No	L (mm)
4023500-0100	100
4023500-0200	200
4023500-0300	300
4023500-0400	400
4023500-0630	630
4023500-0800	800
4023500-1000	1000
4023500-1500	1500
4023500-2000	2000
4023500-XXXX	XXXX*

* For customer specified lengths.

Basic Information EO24™ Hose

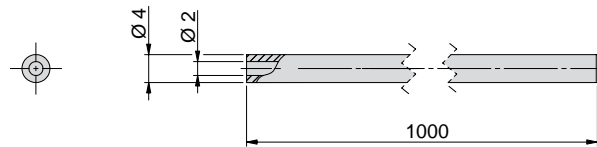
Material Polyamide, black
 Dimension Ø 5 mm exterior (5/64)
 Volume 3 ml/metre
 Outer casing Perforated
 Min. bend radius 20 mm
 Max dynamic working pressure 475 bar
 Min. burst pressure 1900 bar at +20° C
 Operating temperature -20 - +80°C



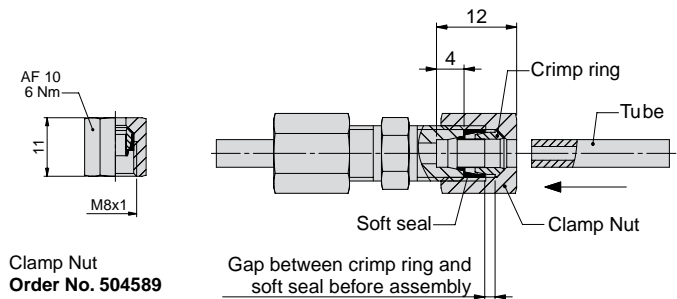
Micro/EZ-Hose clip, **Order No. 502646**
 (Can be used to secure hoses using an M5 screw)

Tube, Order No. 504594

(delivered in 1 m lengths)



The Micro EO24™ Tube is a system where all connections are soft sealed and self crimping. This ensures leak proof tube joints. The tubes are easily cut into correct lengths and can be bent into the desired radius with a tube bending tool or even by hand. Various adapters are available allowing Micro EO24™ Tube to connect to almost all KALLER gas springs and Control Blocks.



Clamp Nut
Order No. 504589

Basic Information EO24™ Tube

Tube external diameter..... Ø 4 mm
 Tube internal diameter..... Ø 2 mm
 Min. bend radius.....12 mm (3 x e.d.)
 Tube material..... Seamless steel tube St. 37.4
 (Parker Order No. R04X1CF)
 Max. dynamic pressure (system)..... 430 bar
 Min. burst pressure (system)..... 1100 bar
 Max. working temperature.....100 °C *



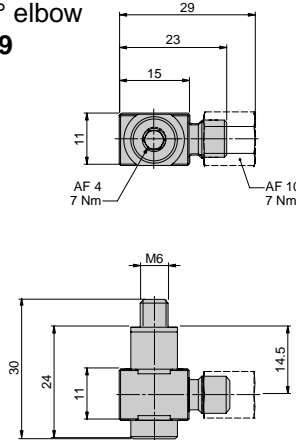
Tube Deburring Tool
Order No. 505096



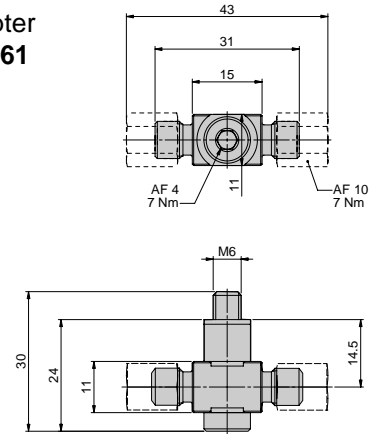
Tube Bending Tool
 (Bend radius 20 mm)
Order No. 504711

Adapters for Micro EO24™ Hose and Tube System

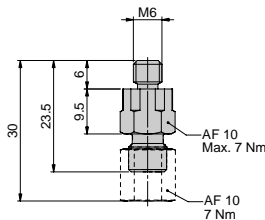
One-way M6 adapter 90° elbow
Order No. 4022059



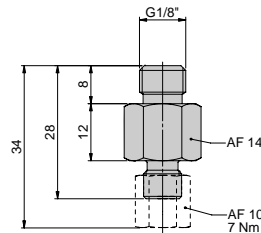
Two-way M6 adapter
Order No. 4022061



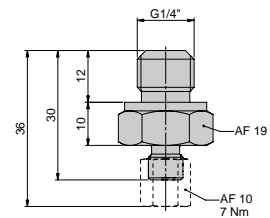
M6 straight adapter
Order No. 4022057



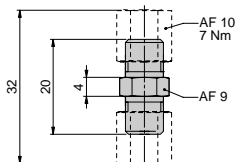
G1/8" straight adapter
Order No. 4022058



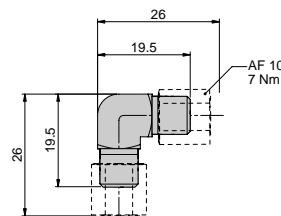
G1/4" straight adapter
Order No. 4022063



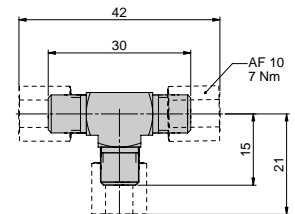
Two-way Coupling straight
Order No. 504590



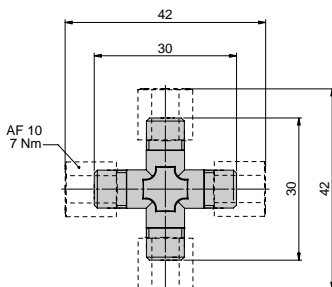
Two-way Coupling 90° elbow
Order No. 504591



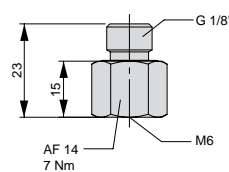
Three-way Coupling
Order No. 504592



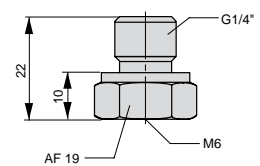
Four-way Coupling
Order No. 504593



G 1/8" to M6
Order No. 503764



G 1/4" to M6
Order No. 503966



Micro EO24™ Control Block
Order No. 3023888 (without Rupture Screw)
Order No. 3123888 (with Rupture Screw)

