

sockets and plugs

„Increase your efficiency
at the twist of a wrist.“



- ▶ secure connection
- ▶ high current carrying capacity
- ▶ minimum wear
- ▶ compatibility with earlier series

DINSE – the original connector.



Precise cone contact – for safe, sustained welding.

When performing stationary or mobile welding, every movement of the hand counts. This is where the original DINSE connector proves its value. Just plug it together, tighten with a quick twist of the wrist and the connection is perfect. DINSE connectors and sockets are simple, safe, rugged and long-lasting and they provide optimal supply of current.

Cable Sockets

Cable Plugs



Mini

Mini

DIX BKM 25

10 - 25 mm²

DIX SKM 25



Standard

Standard

DIX BK 25

16 - 25 mm²

DIX SK 25

DIX BK 50

35 - 50 mm²

DIX SK 50

DIX BK 70

50 - 70 mm²

DIX SK 70



Plus (with double clamp screws)

Plus (with double clamp screws)

DIX BKK 70

50 - 70 mm²

DIX SKK 70

DIX BKK 95

70 - 95 mm²

DIX SKK 95



Special (with double clamp screws)

Special (with double clamp screws)

DIX BKS 95

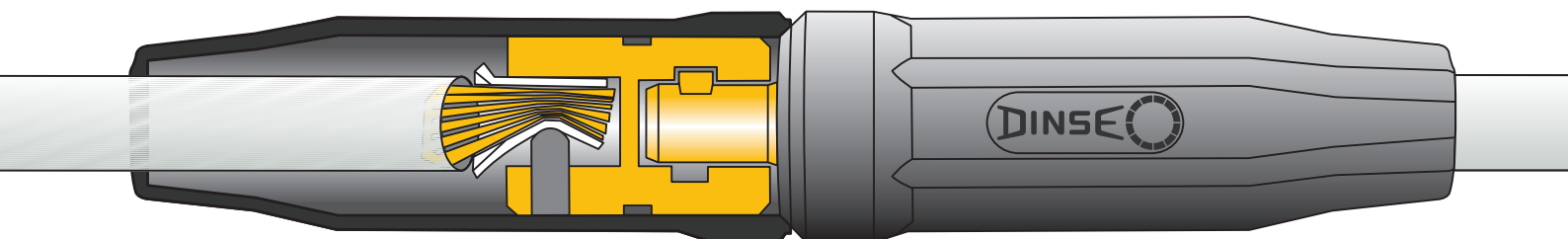
70 - 95 mm²

DIX SKS 95

DIX BKS 120

95 - 120 mm²

DIX SKS 120



Efficient connection system – for installing on electrical devices.

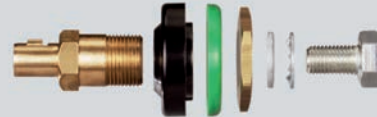


The use of high-performance electrical devices requires maximum availability and long-term durability. DINSE panel mounted plugs and sockets guarantee maximum current carrying capacity thanks to their high precision conical contact. The optimum current transfer minimises wear and the perfect compatibility increases the cost-effectiveness.

Panel Sockets

Panel Plugs

fitting dimensions
(in mm)



Mini

connecting screw size

Mini

DIX BEM 25

M 8

DIX SEM 25

a b c

6,3 22,7 20,2



Standard

connecting screw size

Standard

DIX BE 50/70

M 10

DIX SE 50/70

a b c

6,3 33,2 30,2

DIX BE 70/95

M 12

DIX SE 70/95

6,3 33,2 30,2



Plus (with cover flap)

connecting screw size

DIX BEK 50/70

M 10

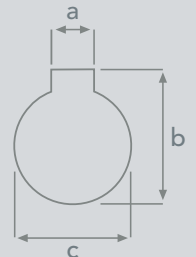
DIX BEK 70/95

M 12

a b c

6,3 33,2 30,2

6,3 33,2 30,2



Special

connecting screw size

Special

DIX BES 95/120

M 16

DIX SES 95/120

a b c

6,3 38,2 35,2

The original DINSE connector

Around the world, the DINSE brand stands for precision, high quality and current carrying capacity. The tried and tested basic components of DINSE cable connectors have decisively contributed to trouble-free welding operations for more than 50 years.

Maximum current-carrying capacity

Thanks to their high-precision conical fit, original DINSE plugs and sockets can carry at least as much load as the connectable welding cables. The following empirical values apply to the maximum load-bearing capacity*. When different sizes of sockets or plugs are used, DINSE reducers create a perfect connection.

nominal cross-section	100% DC	60% DC
10 - 16 mm ²	135 A	140 A
16 - 25 mm ²	180 A	190 A
25 - 35 mm ²	225 A	245 A
35 - 50 mm ²	285 A	315 A
50 - 70 mm ²	355 A	400 A
70 - 95 mm ²	430 A	500 A
95-120 mm ²	500 A	590 A

* Only for copper cables with high-grade chloroprene covers, e.g.: H01N2-D (permitted up to 80°). For simple rubber hose lines the maximum values are lower.

Optimal welding cable

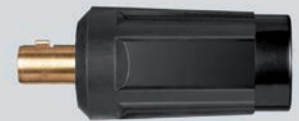
The welding cables** should be selected with sufficiently large cable cross-sections. When the cross-sections are too small, a large part of the power is consumed by the high cable resistance.

welding current	≤ 10 m	> 10 m	> 50 m	> 100 m
100 A	25 mm ²	35 mm ²	50 mm ²	70 mm ²
200 A	35 mm ²	50 mm ²	70 mm ²	95 mm ²
300 A	50 mm ²	70 mm ²	95 mm ²	120 mm ²
400 A	70 mm ²	95 mm ²	120 mm ²	-
500 A	95 mm ²	120 mm ²	-	-
600 A	120 mm ²	-	-	-

** When aluminium welding cables are used, the next larger size cable cross-section must always be selected due to the poor conductivity, e.g.: Instead of 70 mm² Cu, use 90 mm² Al.



Reduction Plug DIX RSS 50/25



Reduction Plug RSS S50/B25



Reduction Plug DIX RSS 95/120



Cable Joint Socket DIX KAB 70/95



Cable Joint Plug DIX KAS 70/95

