

# Flanges & Fittings - NW Assembly Hardware Wing Nut & Bulkhead Clamps



## SPECIFICATIONS

**Tube OD sizes:** 1/2 to 2 inches

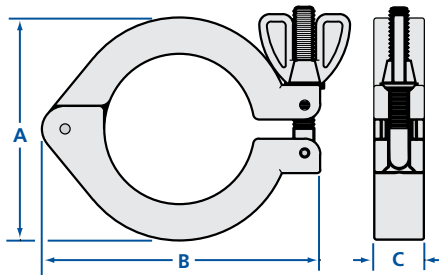
**Materials**

Clamps: Aluminum

**Fasteners:** Wingnut, SureSeal & bulkhead

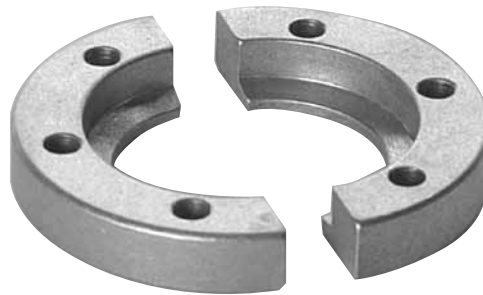
**Vacuum range**

Elastomer seal:  $\geq 1 \times 10^{-8}$  Torr - High vacuum



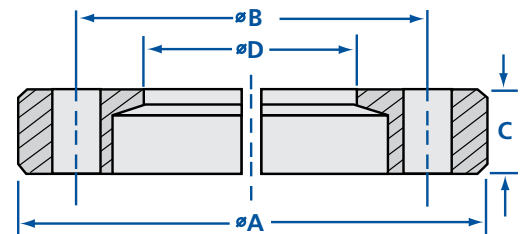
## NW Wing Nut Clamps

MODEL NUMBER	A	B	C
NW-10-CP	1.690	2.392	0.625
NW-16-CP	1.690	2.392	0.625
NW-25-CP	2.140	2.796	0.625
NW-40-CP	2.750	3.437	0.625
NW-50-CP	3.500	4.245	0.710



## NW Bulkhead Clamps

MODEL NUMBER	A	B	C	NUMBER OF SCREWS	THROUGH HOLE D
NW-16-BCP	2.00	1.50	0.361	6	0.90
NW-25-BCP	2.37	1.89	0.387	6	1.26
NW-40-BCP	2.94	2.44	0.366	6	1.84
NW-50-BCP	3.75	3.25	0.404	8	2.35



REV 6/16

