






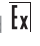

## Aluminum Alloy Air Acting directional control Spool Valves - DP serie

Valvole controllo a cassetto ad azionamento pneumatico 1/2" NPT in alluminio esente rame

- 3/2 or 5/2 Functions
- 1/4" - 3/8" (DN8mm) & 1/2" - 3/4" (DN12mm) size
- Compact size
- Suitable for multidirectional flow
- Provided with through-holes in the body
- Suitable for dual pressure application
- Standard NPT threads
- Suitable for control and instrument gases
- High flow rate for the compact size of the valve
- Complete material traceability
- ATEX 2014/34/UE - II2GD c IICT6 X 
-  &  approved
- SIL 3 - IEC 61508 (pilot operated models) 



- Funzioni 3/2 e 5/2
- Taglie da 1/4" - 3/8" (DN 8mm) e da 1/2" - 3/4" (DN12mm)
- Dimensioni compatte
- Adatte per flussi multidirezionali
- Dotate di fori passanti sul corpo
- Adatte per applicazioni con doppia pressione
- Filettature NPT standard

- Idonee per gas di controllo e strumentale
- Alte portate per le dimensioni compatte della valvola
- Completamente in acciaio inossidabile AISI316 L
- Completa rintracciabilità dei materiali
- ATEX 014/34/UE - II2GD c IICT6 X
- Approvato  ed 
- SIL 3 - IEC61508  (per modelli con azionamento pneumatico)

### Technical features:

Caratteristiche tecniche:

- Fluid : air and compatible gases
- Working pressure : -0.9 -10 bar
- Operating pressure : 2.5 bar
- Working temperature : -20°C/+90°C  
NB: low temperature version available
- Orifice: dn 8 mm (1/4") ; dn 12 mm (1/2")
- Fluido : aria e gas compatibili
- Pressione di lavoro : -0,9 - 10 bar
- Pressione di azionamento : 2.5 bar
- Temperatura di lavoro : -20°C/+90°C  
NB: disponibile versione basse temperature
- Orifizio: dn 8 mm (1/4") ; dn 12 mm (1/2")

### Materials:

Materiali:

- Body & end adapters in copper free aluminum alloy with epoxy painting
- Spool in aluminum alloy
- Screws and springs in stainless steel
- Gasket and seals in synthetic rubber
- Corpo e adattatori terminali in alluminio esente rame con verniciatura epossidica
- Spola in alluminio
- Viti e molle in acciaio inossidabile
- Guarnizioni e tenute in gomma sintetica

### Alternative models

Modelli alternativi

- Manual reset
- Key operator
- ISO threads
- Low temperature versione with HNBR gaskets (add -HN to the code)
- Reset manuale
- Key operator
- Filettature ISO
- Versione per basse temperature con tenute in HNBR (aggiungere -HN al codice)

**3/2 – 1/4" BODY - 3/2 – CORPO 1/4"**

SIZE CONNEALIONI	FUNCTION FUNZIONE	OPERATOR AZIONAMENTO	RETURN RIPOSIZIONAMENTO	MODEL MODELLO
1/4" NPT	3/2	Pilot /Pneumatico	Spring / Molla	DP32AL04N
1/4" NPT	3/2	Pilot /Pneumatico	Pilot /Pneumatico	DPP32AL04N
1/4" NPT	3/2	Knob / Pulsante Palmo	Spring / Molla	DP32AL04N-M1
1/4" NPT	3/2	Knob / Pulsante Palmo	Knob / Pulsante Palmo	DP32AL04N-M2

**3/2 – 1/2" BODY- 3/2 – CORPO 1/2"**

SIZE CONNEALIONI	FUNCTION FUNZIONE	OPERATOR AZIONAMENTO	RETURN RIPOSIZIONAMENTO	MODEL MODELLO
3/8" NPT	3/2	Pilot /Pneumatico	Spring / Molla	DP32AL06N
3/8" NPT	3/2	Pilot /Pneumatico	Pilot /Pneumatico	DPP32AL06N
3/8" NPT	3/2	Knob / Pulsante Palmo	Spring / Molla	DP32AL06N-M1
3/8" NPT	3/2	Knob / Pulsante Palmo	Knob / Pulsante Palmo	DP32AL06N-M2
1/2" NPT	3/2	Pilot /Pneumatico	Spring / Molla	DP32AL08N
1/2" NPT	3/2	Pilot /Pneumatico	Pilot /Pneumatico	DPP32AL08N
1/2" NPT	3/2	Knob / Pulsante Palmo	Spring / Molla	DP32AL08N-M1
1/2" NPT	3/2	Knob / Pulsante Palmo	Knob / Pulsante Palmo	DP32AL08N-M2
3/4" NPT	3/2	Pilot /Pneumatico	Spring / Molla	DP32AL12N
3/4" NPT	3/2	Pilot /Pneumatico	Pilot /Pneumatico	DPP32AL12N
3/4" NPT	3/2	Knob / Pulsante Palmo	Spring / Molla	DP32AL12N-M1
3/4" NPT	3/2	Knob / Pulsante Palmo	Knob / Pulsante Palmo	DP32AL12N-M2

**5/2 – 1/4" BODY - 5/2 – CORPO 1/4"**

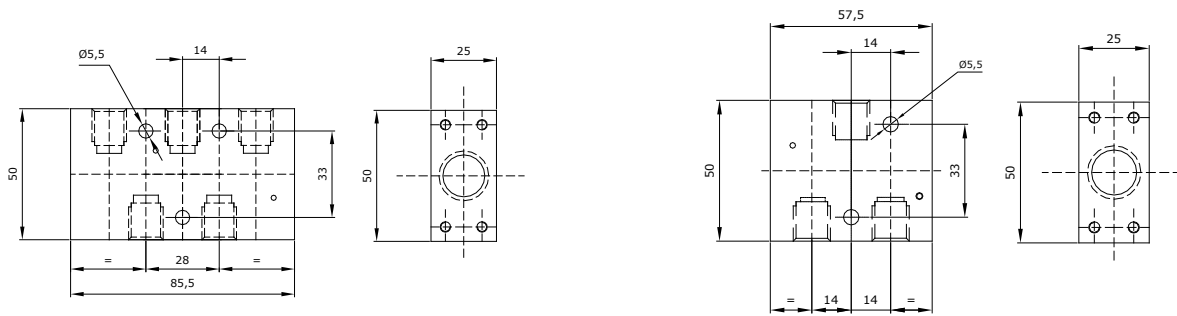
SIZE CONNEALIONI	FUNCTION FUNZIONE	OPERATOR AZIONAMENTO	RETURN RIPOSIZIONAMENTO	MODEL MODELLO
1/4" NPT	5/2	Pilot /Pneumatico	Spring / Molla	DP52AL04N
1/4" NPT	5/2	Pilot /Pneumatico	Pilot /Pneumatico	DPP52AL04N
1/4" NPT	5/2	Knob / Pulsante Palmo	Spring / Molla	DP52AL04N-M1
1/4" NPT	5/2	Knob / Pulsante Palmo	Knob / Pulsante Palmo	DP52AL04N-M2

**5/2 – 1/2" BODY - 5/2 – CORPO 1/2"**

SIZE CONNEALIONI	FUNCTION FUNZIONE	OPERATOR AZIONAMENTO	RETURN RIPOSIZIONAMENTO	MODEL MODELLO
3/8" NPT	5/2	Pilot /Pneumatico	Spring / Molla	DP52AL06N
3/8" NPT	5/2	Pilot /Pneumatico	Pilot /Pneumatico	DPP52AL06N
3/8" NPT	5/2	Knob / Pulsante Palmo	Spring / Molla	DP52AL06N-M1
3/8" NPT	5/2	Knob / Pulsante Palmo	Knob / Pulsante Palmo	DP52AL06N-M2
1/2" NPT	5/2	Pilot /Pneumatico	Spring / Molla	DP52AL08N
1/2" NPT	5/2	Pilot /Pneumatico	Pilot /Pneumatico	DPP52AL08N
1/2" NPT	5/2	Knob / Pulsante Palmo	Spring / Molla	DP52AL08N-M1
1/2" NPT	5/2	Knob / Pulsante Palmo	Knob / Pulsante Palmo	DP52AL08N-M2
3/4" NPT	5/2	Pilot /Pneumatico	Spring / Molla	DP52AL12N
3/4" NPT	5/2	Pilot /Pneumatico	Pilot /Pneumatico	DPP52AL12N
3/4" NPT	5/2	Knob / Pulsante Palmo	Spring / Molla	DP52AL12N-M1
3/4" NPT	5/2	Knob / Pulsante Palmo	Knob / Pulsante Palmo	DP52AL12N-M2

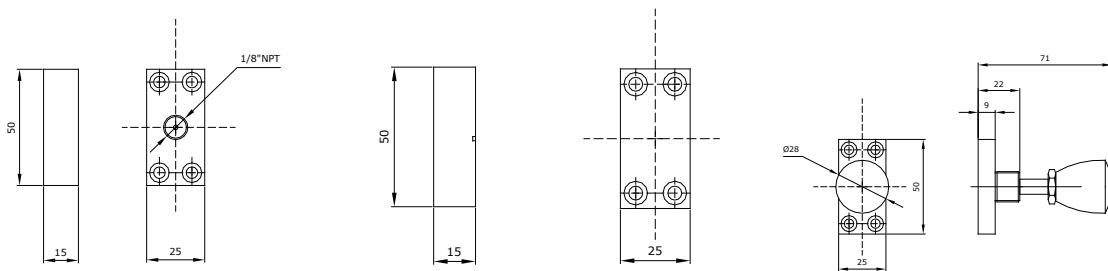
## 1/4" 5/2 & 3/2 Body dimension

Dimensioni 5/2 e 3/2 1/4"



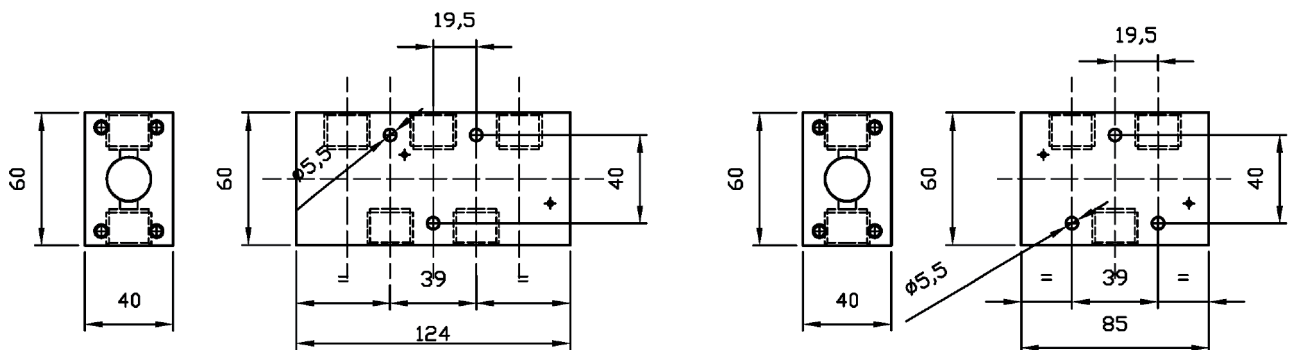
## Pilot, spring & manual operator

Azionamenti pneumatici, molla e manuali



## 1/2" 5/2 & 3/2 Body dimension

Dimensioni corpo 5/2 e 3/2 1/2"



## Pilot, spring & manual operator

Azionamenti pneumatici, molla e manuali

